

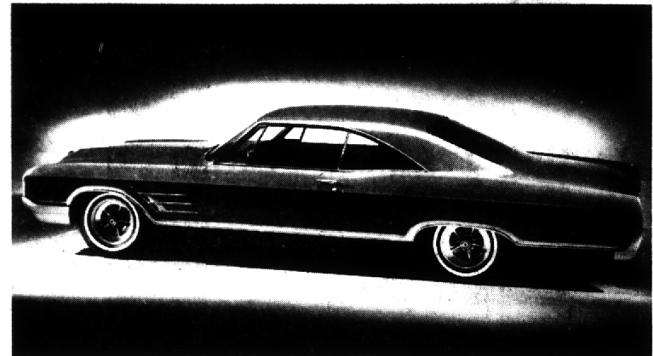
# The Birmingham Eccentric Annual Automotive Section

SEPTEMBER 24, 1964 •

BIRMINGHAM, MICHIGAN



CHEVROLET



BUICK



RAMBLER

The city of Birmingham has nine new car dealer showrooms within its boundaries, a rarity in a community of 25,000.

The dealers sell all types of automobiles ranging from the smallest compacts to the big-car luxury models. All of the American-made cars are represented in local dealerships.

On this page are many 1965 autos on display in the local showrooms. Models representing each of the nine dealers are illustrated here.

The inside pages of the Automotive Section are filled with pictures, facts and figures of all of the 1965 models on sale in Birmingham.

IN GENERAL, the auto-buying public will find the new cars longer, roomier and with expanded window areas.

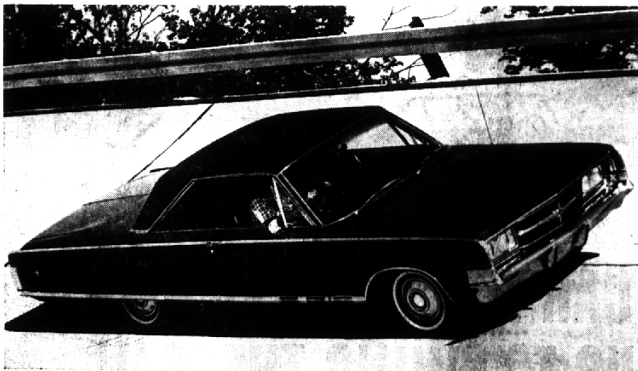
One manufacturer has introduced a larger gas tank and another has blended walnut paneling into the interior decor.

All of the companies have improved engine performance and two have completely remodeled body styles.

For the complete story on pleasant motoring for '65 be sure to read this special 16-page automotive section.



PONTIAC



CHRYSLER



LINCOLN



OLDSMOBILE



DODGE



FORD