

Calendar of Cultural Events

Thurs., Sept. 24
JAPANESE ART SHOW — Works by artist Kichi Tsui are on display in the Oakland University Art Gallery through Oct. 12.
BRIDGE — Birmingham Duplicate Bridge Club at 7:45 p.m. at Birmingham YMCA.
CRANBROOK ACADEMY OF ART — "Moods of Light," exhibition of contemporary painting circulated by American Federation of Art, through Sunday. Open Tues.-Fri. 2-5 p.m. and Sat.-Sun. 1-5 p.m. in Bloomfield Hills. Admission charge.
CRANBROOK INSTITUTE OF SCIENCE — Skillman Wing for the Physical Sciences with exhibit "Experiments in Physics." Hours 2-5 p.m. Mon.-Fri. and 1-5 p.m. Sat.-Sun. Admission charge.
BIRMINGHAM THEATRE — "Cleopatra," through Tues.
BLOOMFIELD THEATRE — Today only: Richard Burton in "Hamlet," film at 1:30 and 8 p.m. Regular features through Tues. "Sunday in New York" and "Looking for Love."
Fri., Sept. 25
PIANO CONCERT — Opening the 1964-65 Oakland University concert series will be pianist Coleman Barksfield at 8:15 p.m. in the Intramural Building theater. Admission charge.
BIRMINGHAM MUSICAL INSTRUMENTAL ENSEMBLE — Concert conducted by Arthur Stephan at 8:30 p.m. at the Bloomfield Art Association, 1516 S. Cranbrook Road, Birmingham. Admission charge to non-members.
RENAISSANCE FILM FESTIVAL — First program of four films by artist Clifford West for Kingswood Cranbrook scholarship benefit at 8 p.m. at outdoor Greek Theatre at Cranbrook, Bloomfield Hills. Admission charge.
Sat., Sept. 26
WILL - O - WAY APPRENTICE THEATRE — Free performances of modern experimental theatre, 3:30 p.m., and open house, from 2 to 6 p.m., 785 W. Long Lake Road, Bloomfield Hills.
Sun., Sept. 27
WILL - O - WAY APPRENTICE THEATRE — Free performances of modern experimental theatre, 3:30 p.m., and open house, from 2 to 6 p.m., 785 W. Long Lake Road, Bloomfield Hills.
LITTLE GALLERY — "Eyes on New England," exhibition of art work by Joseph Barber and Jack Vallee at 915 E. Maple, Birmingham. Preview 3-6 p.m. Show continues through Oct. 24. Hours 9 a.m. to 6 p.m. Tues.-Sat.
Mon., Sept. 28
BRIDGE — Community House Duplicate Bridge Club at 7:45 p.m. at 380 S. Bates, Birmingham.
Tues., Sept. 29
BRIDGE — Birmingham Duplicate Bridge Club at 12:30 p.m. at home of Mrs. Stuart Murphy, 241 Manchester, Birmingham.
Wed., Sept. 30
BRIDGE — Birmingham-Bloomfield Area Bridge Club at 7:45 p.m. at Birmingham YMCA.
Thurs., Oct. 1
BRIDGE — Birmingham Duplicate Bridge Club at 7:45 p.m. at Birmingham YMCA.
Fri., Oct. 2
RENAISSANCE FILM FESTIVAL — Second program of four films by artist Clifford West for Kingswood Cranbrook scholarship benefit at 8 p.m. at outdoor Greek Theatre at Cranbrook, Bloomfield Hills. Admission charge.
REVIEW AND PREVIEW — Michigan artists celebrate Birmingham's Centennial in exhibition at the Bloomfield Art Association, 1516 S. Cranbrook Road, Birmingham. Reception and buffet for members and guests at 7 p.m.
Sat., Oct. 3
WRITERS' CONFERENCE — All-day conference at Oakland University sponsored by the Detroit Women Writers' Club. Topics include poetry, books, magazines, prose, stories and articles, juveniles, drama. Admission charge.
Sun., Oct. 4
CARILLON CONCERT — By Fred Fessler at 4 p.m. at Christ Church Cranbrook, Bloomfield Hills.

Bookcase

(Continued from 1-D)

LOVE FOR THE OUTDOORS makes his prose ring with sincerity and causes him to interrupt his story with passages like: "It was like standing before a closed door and not knowing how to open it. This was a feeling that he was going to have again and again when he was alone; a waiting and reaching-out to know and be merged with the mystery, an exaltation and a yearning. Many woodsmen have had it and are only completely happy when they are lost from the outside world and on the edge of it."

THERE ARE SOME wonderful scenes in the story that out Disney Walt Disney in his best nature sequences. The other protecting its baby from the wildcat; the weasels, slithering over the rocks; their eyes burning with hostility; the spectacle of the convoy of wild turkeys, are described with detail and feeling that only a man who has witnessed these episodes himself could recount.

The characters are fresh and true also. Ben, the old woodsman who has come to terms with life

after difficult struggles, the afflicted son of a backwoods farmer born with a compensating special wisdom, Sharbee who has lived in the woods so long he has become a part of them; these are some of the people you come to know, respect, and like.

BUT THE REAL charm of the book is the wildlife that crowd the pages, squirrels, otters, deer, ducks, quail and a dog named Charley, who not only hunts squirrels but eats them, too, tails and all.

"The Pond" is one of those books that envelops you, and you close it with somewhat the same sensations that Joey experiences as he finds his way out of the swamp after being lost: "He wasn't quite the same."

"The Pond" is the winner of the 1964 Animal Book Award.

Writers Meet

Oakland County Writer's Workshop met at the Pontiac YWCA last Thursday. Items under discussion were the Oakland Writer's Conference, Consumer Magazine markets, and a poem written by Mrs. Lucia Wilford of Clarkston. Admitted as a new member was Mrs. Sunny who has come to terms with life

Great Books Discussions To Begin

Registrations are now being taken for all the Great Books Discussion Groups in the Detroit and Birmingham areas.

Membership is open to all adults in the community, and no special educational background or tuition is required.

The discussion groups meet every other week for a two-hour discussion on today's problems through the reading of the works of the thinkers and writers throughout the ages.

RESIDENTS who are interested in the program may contact Mrs. Marjorie Partridge, librarian at

the West Bloomfield Township Library, 5600 Orchard Lake Road, Orchard Lake, whose group will meet on Wednesdays starting Sept. 23 from 8 to 10 p.m. Or they may contact Howard Malwitz, adult education division, Groves High School, 20500 W. 13 Mile Road, Birmingham, whose groups start Sept. 22 (Tuesday) from 8 to 10 p.m. and Sept. 23 (Wednesday) from 8 to 10 p.m.

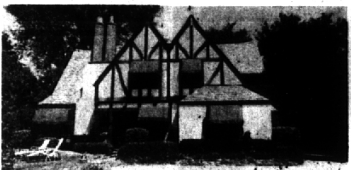
The average American woman uses about three times her own weight in cosmetics during her lifetime.

FOR LEASE

5,500 sq. ft. industrial space in new building under construction in Birmingham Airport Industrial Subdivision at Maple and Coolidge. Will finish to your specs with room for expansion. Occupancy September 1, 1964.

Simone & Co.

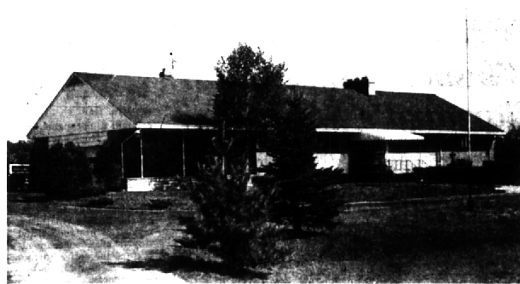
273-8300



IDEAL COUNTRY LIVING in this Old English Colonial on a quiet wooded lane. Handsome liv. and din. rms. Sep. breakfast nook and lrg. kit. 4 twin sized bedrms. Paneled tiled rec. rm. Porch and Patio in rear. Here's peace and privacy plus value. \$40,900.

CHAMBERLAIN
 31500 Northwestern Hwy.
 Farmington Ask For Gay Lehman MA. 6-9100

COUNTRY RANCH



2-2 3 ACRES on lovely Bingham Road.

QUALITY-BUILT Brick, Stone and Frame with FULL BASEMENT.

Huge (32x26) Living room with unusual Fireplace.

Dining room. Custom Kitchen with eating space.

3 Bedrooms, 3 1/2 Baths.

Recreation room is paneled, has fireplace, complete Bar and Kitchen too. Large separate Laundry.

YOU MUST SEE the interior to appreciate the quality here.

Completely Air Conditioned

COUNTRY LIVING AT ITS BEST. \$54,900.

CITY COLONIAL



PRIME LOCATION — Lovely street with mature trees and fine established homes WITHIN WALKING DISTANCE TO SCHOOLS AND SHOPPING.

This is the classic center-hall Colonial which

always affords the easiest family living.

Large Living room with fireplace. Separate Dining room.

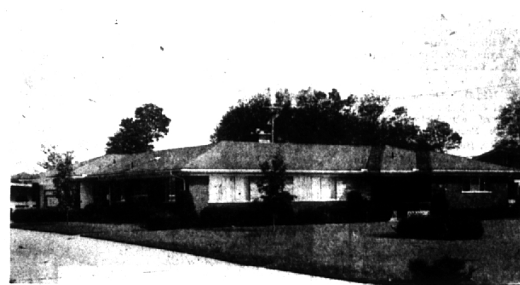
Good Library. Kitchen with eating space.

4 excellent Bedrooms, 2 1/2 Baths.

All carpeting and Draperies. Thermopane window.

THIS IS A REMARKABLE VALUE FOR \$35,700.

CLOSE IN



WESTCHESTER VILLAGE

WALK TO Brother Rice, Marian, St. Regis without crossing any traffic. Less than a mile to Seaholm and Midvale.

Living room with fireplace. Dining room.

Family room and Florida room. Large Patio enclosed with wrought-iron railing.

Custom Kitchen with GE oven and stove, dishwasher, disposal.

3 Bedrooms, 2 full Baths, and Lav-Mud room.

Double-glazed windows and aluminum screens.

2-car Garage with tiled floor. Copper Sprinkling system.

Custom Draperies and carpeting thruout.

OWNER HAS AN INVESTMENT OF OVER \$50,000. The PRICE IS \$39,900.

or

Wherever you want to live

SEE US—

We are now affiliated with the largest intercontinental referral system in the entire United States. American Institute of Marketing Systems, Inc. Reputable—Reliable—Resourceful



CITY RANCH



PERFECT FOR YOUNG FAMILIES

BOTH as to location and space. WALK TO PEMBROKE & DERBY SCHOOLS.

20x15 Living-Dining room.

Kitchen and Breakfast space.

3 Bedrooms, 1 1/2 Baths. FULL BASEMENT.

Gas heat. Paved Streets. Nice lawns.

Friendly neighbors in an area of clean, well-kept homes.

Carpeting and Draperies included.

Well-maintained inside and out.

PRICED AT \$19,500. This is a good mortgage and resale area.

YOUR GARDEN CLINIC

Don't lose sight of the fact that during this magnificent weather "all is not fun". There is work to be done—such as:

A. FERTILIZE your lawn. Use one bag of AGRICO 16-8-8 or GREENFIELD 20-10-5 to 2500 sq. ft. Yes! We know the instructions say they cover 5,000 sq. ft. It happens that we are more in favor of the grass than of the promotional interests of the manufacturers.

B. BROAD LEAF WEEDS may still be effectively eliminated with WEED-B-GON, DU PONT WEED KILLER, McClellan-Ball WEED KILLER, ORTHO CHICKWEED & CLOVER KILLER, etc. THE TIME IS GOOD.

C. "Banding" of trees around which the moths are flying is a splendid control. "Banding" is the application of a sticky paste that traps the crawling moths which lay eggs that hatch into inch-worms or leopards. The flying moths are enjoying themselves helping the crawling moths to lay eggs. The flying moths are males and have a very short, but effective life.

D. Gourds for winter decoration must be picked BEFORE they are touched with frost. Cut stem 2" from fruit and take inside to dry.

E. If your wife will let you plant LYCORIS SQUAMIGERA (Naked Lady), he sure bulls are covered with 3" of soil and no more.

F. Now that your yard is again in beautiful condition it is a good time to entertain your friends with CHAR-BROIL PORTABLE GRILLED STEAKS, CHICKEN or WHAT YOU HAVE. (The grill is portable as well as the food.) This grill, in its several sizes is probably the most satisfactory and rugged job built in the U. S. today.

G. A NEW lawn started now should have a good dressing of fertilizer before the seed is sown or the sod is set.

40# of 4-12-4)

20# of 8-16-8) per 1000 sq. ft.

40# of 3-12-12)

H. DON'T FERTILIZE trees and shrubs until the leaves have fallen or the plant is dormant.

I. Lead and marble figures can be cleaned with soap and water or possibly washing soda. Be SURE to wash off all residue afterwards.

Guden nicht (whatever that means)

McClellan-Ball Co.
Everything for the Yard and Garden

850 S. WOODWARD, BIRMINGHAM, MICH.
 FREE AREA DELIVERY Midwest 4-4133