

Will-O-Way Holds 'Backstage Buffet'

Special free performances of modern experimental theatre last Saturday and Sunday, raised the curtain on Will-O-Way Apprentice Theatre's new fall classes. The shows will be repeated this week end.

Will-O-Way Director Celia Merrill Turner has extended an invitation to open house from 2 to 6 p.m. and the performances at 3:30 p.m. both days. The theatre is at 785 W. Long Lake Road, Bloomfield Hills.

Guests will learn more about Will-O-Way's fall plans, which includes a "Backstage Buffet" with guest experts discussing production techniques. Other new offerings are a Shakespeare workshop and a course in modern experimental theatre.

THE 26-WEEK TERM begins Oct. 5 and continues through February. Classes for adults and college students will be held each weekday night, while daytime classes for children and teenagers are on Saturdays.

The "Backstage Buffet" is designed to give specialized training in production techniques to members of community theatre groups. Following an informal Sunday night buffet, members of the class will hear talks by guest experts in the professional theatre.

Practical application of their talks will be taught by designer Beth (Mrs. Susan) Pilafian and Will-O-Way Stage Manager J. Stevens Bennett. Moderator will be Rula Johnson, managing director of the state-authorized dramatic trade school.

Students of the new experimental theatre course will study and produce scenes from international and avant garde plays on Wednesday nights. The course will place special emphasis on epic theatre techniques and ensemble playing.

Shakespearean students will work towards presentation of one of the great playwright's dramas in next summer's repertory season at Will-O-Way. In their Thursday night curriculum will be speech

Promotion at Howe

Jeffrey D. Yoder, son of Mr. and Mrs. Roger A. Yoder, 520 N. Glenhurst Dr., Birmingham, has been promoted to 2nd Lt., Co. "A" at Howe Military School, Howe, Ind.

and diction, interpretation, fencing and classic movement, to be taught by Mrs. Turner, assisted by Johnson and Treasa Way Merrill. Several well-known vocalists have already enrolled for vocal drama, special coaching in the techniques of the musical theatre. Mrs. Turner will coach the singers in the style of acting and stage movement which is special to the musical stage.

Assisting Mrs. Turner with the group will be music director Martha (Mrs. Arthur R.) Welton, 280 Bird, Birmingham, and voice coach Mary (Mrs. Clark E.) Pardee, 4158

Walnut Hill Drive, Birmingham. Mrs. Pardee will also coach youngsters in a Friday afternoon drama class, from which juvenile roles in the road show will be filled.

Regular class work for young people on Saturdays will be enlarged by electives including characterization, history of the theatre, fencing, mime, make-up, costumes and set design.

Japanese Art Show Opens In OU Gallery

Paintings by Japanese artist Kiichi Usui are on display in the Oakland University art gallery in an exhibition scheduled through October 12.

According to John Galloway, chairman of the OU art department, Usui's style is referred to as "action painting," a prevalent mode in Japan.

His work is characterized by luminous use of color, and although his paintings are abstract,

they suggest natural forms as sources. The titles of several of his works — "Red Willow Tree," "Ravine" and "Desert's Bloom" suggest Usui's reference to nature for his expression. The exhibit will include 30 oils and water colors by the 33-year-old artist.

USUI STUDIED at the Tokyo University of Arts before coming to this country in 1955. He subsequently studied at the Art Stu-

dents League in New York; and was awarded the Allen Tucker Scholarship for Painting in 1957.

The Usui exhibit will be shown through October 12 in the OU gallery. The gallery will be open from 1:30 to 4:30 p.m. Monday through Friday and from 2 to 5 p.m. on Sundays.

Meditation is the tongue of the soul and the language of our spirit; and our wandering thoughts in prayer are but the neglects of meditation and recessions from that duty; and according as we neglect meditation, so are our prayers imperfect, meditation being the soul of prayer and the intention of our spirit.

—Jeremy Taylor

4-D THE BIRMINGHAM (MICH.) ECCENTRIC Sept. 24, 1964

HALL & YOUNG



Showcase of homes

REALTORS

BIRMINGHAM
345 S. WOODWARD
MI 6-7900

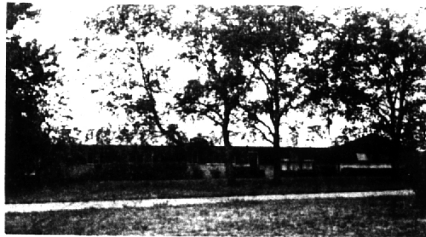
BLOOMFIELD
4114 W. MAPLE
MA 6-5900

OPEN TILL 9 P.M.



WORK'S ALL DONE—This 3-year-old Southern Colonial is complete with carpets, drapes, and landscaping and is unusual in its fine detailing. **FOUR** excellent bedrooms, superb family room with massive beamed ceiling, large formal dining room, 2½ baths, and 3 fireplaces. **MOVE RIGHT IN!** \$49,000.

FAMILY FUN—Behind that screen of trees is a long, rambling brick ranch complete with a 45 ft. swimming pool. For the large family, there are **FIVE BEDROOMS**, a 22x22 ft. family room, 2 tiled baths, and att. 2 car garage. **CALL AND SEE!** \$41,700.



"HICKORY SPRING"—Its intriguing name draws a mental picture of the spring-fed lake site on which this spacious Bi-level is located. You'll enjoy the privacy of view from its four large bedrooms, huge 27 ft. recreation room, and twin upper and lower level porches. **SOMETHING DIFFERENT!** \$54,900.

STATELY—Located on a sleepy, tree-lined street in picturesque Clarkston, this New York State Colonial is delightfully detailed and includes a **LAKE FRONT SITE**. Three bright bedrooms, library, and separate dining room in the main house plus a 2 bedroom side wing apartment and a small cottage near the lake. **UNIQUE!** \$34,500.



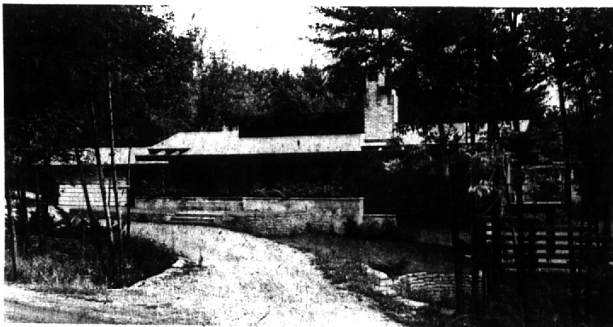
THE KIDS WILL LOVE IT—YOU'LL LOVE IT! A country setting on over three acres but only 2 miles from center of Birmingham. The most expandable house available. Three good sized bedrooms, dining room and 17 foot enclosed porch. Two extra bedrooms, bath and family room could be easily added. Delightful barn on the property. Gorgeous wooded site—let us show you around.



LOW DOWN PAYMENT WILL PURCHASE you a terrific house for the money! Three bedrooms and 1½ baths. Fireplace in living room. 16 foot glassed and screened porch. Great paneled recreation room with refreshment bar and many built-ins. Carpeting, curtains and shutters. Excellent condition. **\$20,900.**



IT HAS ALL THE "I WANTS" and in a top quality neighborhood you will love. Three bedrooms and 2½ bathrooms with space on lower level for 4th bedroom and full bath. Dining room, 24 foot family room plus a porch. Delightful kitchen with built-in oven and range. Draperies and carpeting. In excellent condition. It is **\$36,200** and a great **VALUE.**



NEAR THE KIRK ON WOODDED HILL rising from the lakeshore and connecting to Lower Long Lake via canal. Designed by Paul Moffett and has many, many extra deluxe features we would like to show you. Four bedrooms, three baths. Delightful family room. Beautiful built-in bar with refrigerator and sink on upper level. Fully air-conditioned. Nothing like it for **\$72,500.**



SUPERB HOME IN BETTER THAN NEW CONDITION with Orchard Lake mailing address and Bloomfield Hills Schools. Four bedrooms, two bathrooms and two lavs. Dining room and 24 foot family room with 2nd fireplace. Fully equipped ultra kitchen with breakfast room. Terrazo floor in family room and entire lower-level. Many deluxe features **TO SEE!** **GARAGE IS HEATED and plastered** — those cold mornings are on their way.

Weir, Manuel & Snyder, Inc.

298 South Woodward
Birmingham, Michigan Realtors

Birmingham 644-6300
Phones: From Detroit 564-2323