

Movie Guide

Pariente Committee
Birmingham P.T.A. Council

MOVIE Green Sheet National Legion of Decency

Sunday in New York A B
Looking for Love A-M-Y B
The Tintler A-2
Samson and the Seven A-2
Miracles of the World A-2
Cleopatra A-M-Y-B B
* recommended as superior entertainment especially for children

GREEN SHEET

These audience symbols are intended as broad guides to selection, and do not indicate either recommendation or non-recommendation of the films to which they are applied.

A Adults
M-Y Mature Young People
Y Young People (12 years to 16 years)
C Children (unaccompanied by adults)
GA General Audience
NATIONAL LEGION OF DECENCY
A-1 Morally Unobjectionable for General Patronage
A-2 Morally Unobjectionable for Adults and Adolescents
A-3 Morally Unobjectionable for Adults
B Morally Objectionable in Part for All
C Censored

SC A separate classification is given to certain films which, while not morally offensive in themselves, require some analysis and explanation as a protection to the uninformed against wrong interpretations and false conclusions.

September Song

Emptiness whispers across the house
Echoing steps from small flat feet.
Silence surrounds the scattered toys.

Playing Stop and Go with a wooden train.
The rocking-horse and the tricycle rest.

A kitten watches from a wing-back chair.
While an aproned mother dusts and scrubs away the hours

"Til—a yellow-slickered-crow cut-boy
Separates from the moving army of his kind

To tug open the door with "I'm home and I'm hungry!"
"And Tommy's nose is loose in our Kindergarten!"

Now, silence and emptiness are swallowed down
With sandwiches and September's first crisp apple.

Jacqueline d'Almeida
of the Birmingham-Bloomfield Poetry Club

Show

(Continued from 1-B)
David Friedenthal; prints by Frank Cassara and Bob Broner; ceramics by John and Susan Stephenson; and many more.

Such a show will give interesting insight into the changes in art these last 100 years in Michigan.

The exhibition opens to the public Oct. 1, from 10 a.m. to 5 p.m. daily

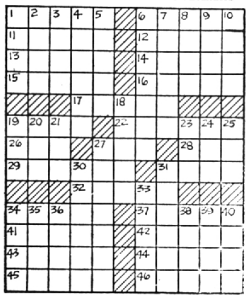
Sept. 24, 1964 THE BIRMINGHAM (MICH.) ECCENTRIC 3-D

ACROSS

1. Veranda
6. Maris
11. Nimble
12. Farewell
13. God of the sea;
Norse
14. Bravemans
15. Quantities of paper
16. Valley; poet.
17. Asian pepper plant
18. Droops
22. Like a bear
26. South American river
27. Biblical animal
28. Petty quarrel
29. Became smaller, as a wool garment
31. Dip up liquid
32. Unpleasant
34. Covering
37. Silk scarf; eel.
41. Article of dress
42. Collier
43. Together
44. Chemical compound
45. Tawny
46. "Lata stand"; print.
DOWN
1. TV's Jack

2. S-shaped molding
3. Capital of Latvia
4. Mounts
5. Battle formation
6. Sanding machine
7. Perfect types
8. Sweet-heart
9. Granular snow
10. Proseutes
11. Long teeth, as in elephants
12. Little girl
13. Large
20. Exclamation
21. Long-nosed fish
23. Man's name
24. Biblical land
25. Female sheep
27. Rose-hibiscus
30. Undo, as links
31. One who plays a lyre
33. Large volumes
34. Sauri

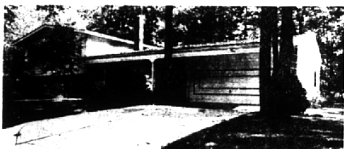
Answers to
Puzzle Will
Be Found
on Page 7-D



Chamberlain GROWING... GROWING... GROWING



WELCOME TO A HAPPIER WAY OF LIFE in this long spacious 4 bedroom ranch with 40' swim. pool. Enjoy the autumn evenings in the firepld. liv. rm. formal dining area. Lrg. bright fam. rm. plus a handsome library. Time saver kit, with dishwasher and built-in appliances. 50' rec. rm. with bar and fireplace-paneled in Japanese ash. Lathrup Village. \$44,900.



AUTUMN WILL BE A SEASON TO REMEMBER especially when there is a paneled fam. rm. with bar to warm up the evening. You'll love living in this exquisite tri-level with 3 lrg. carpeted bedrooms, and two tile baths on the upper level and one bedroom and bath on the lower level. Comfortable liv. rm. with dining el. Handy kit. with oven range and breakfast nook. Heated greenhouse off rear. Beautiful patio. Full basement. Located in Beautiful W. Blmd. \$34,500.



THE CHILDREN CAN WALK TO BIRMINGHAM SCHOOLS from this beautifully kept older Colonial home. Three good sized bedrooms. 1 1/2 baths. Cozy living room with fireplace. Attractive kitchen with eating space. Full basement with laundry room. Nicely landscaped yard with patio. \$19,500.



ENJOY FALL'S FULL SPLENDOR IN THIS WOODY SETTING situated on a lovely 2 acre ravined lot. Luxurious foyer entrance to spacious living room with natural fireplace. Separate breakfast room off large kit. with dishwasher and disposal and all built-in appliances. Simply gorgeous open beamed recreation rm. with exquisite paneling and fireplace. Private patio with beautiful shrubs and flower beds. Four twin-sized bedrooms. Walk-in cedar closet. Circle drive. Birmingham schools. \$49,900.



BE SETTLED AND COZY IN BIRMINGHAM before the first cold snap! Early possession of this lovely 3 bedroom Cape Cod home. Close to Birmingham public and parochial schools. Handsomely paneled library. Fireplace in living rm. Built-in kitchen with dishwasher and disposal plus eating space. Screened and glassed porch. Rear patio. Full basement. Attic fan. Really a lovely home in move-in condition. \$29,500.

Chamberlain Co. Realtors

975 S. Hunter Blvd., Birmingham, Mich. MI 6-6000
31500 Northwestern Hwy., Farmington, Mich. MI 6-9100

BRIDGE in BIRMINGHAM

BY BUD MAYBAUM

Southern Michigan Bridge Ass'n

When I wasn't playing bridge with George Alderton III of Birmingham, Dr. Harris was at Toronto and George came home with 14 of these needed red points. Then just to prove it wasn't a fluke, George went to Greenbush with Dr. Harris, and there they won the Men's Pair and were second overall in the Open Pair.

My hand for today is one of these hands played by George Alderton III, and a very exciting one and proof that he merits the results he obtained.

North and South Vulnerable; Dealer: East.

NORTH (Dr. Harris)
K Q J 9 8 6 5
K 3
2
A 10 3
WEST EAST
2 10 7 3
5 4 10 9 8
K Q 5 10 9 8 6 4 3
K 9 8 6 5 4 2 10 9 8
SOUTH (George Alderton III)
A
A Q J 7 6 2
A J 7
Q J 7

The Bidding:

EAST SOUTH WEST NORTH

pass 2 NT pass 4 NT

pass 4 NT pass 7 NT

all pass.

(Opening lead: K 10.)

George's Opening bid of two No

Trump was aggressive but approved

and Dr. Harris's bid of four clubs

was Greber and when George

admitted he had three aces, Dr. Harris

berd enough and placed the contract

at the grand slam in no

trumps.

ALL GEORGE could say after

bringing home this contract was

that he had seven tricks in spades,

six tricks in hearts, one in diamonds

and three in the Club suit

for a total of 17 tricks. At one table

the contract was seven hearts

and what a shock did South receive

when East ruffed the opening Club

lead.

At the recent Sectional Tournament

at Windsor, Ontario, Margaret

et and Robert Lockwood from this

area were first over all in the

mixed pairs.

Melvin Small, one of the regulars

in Birmingham, came in second

overall with Cliff Bishop in the

Men's Pair and again second over-

all in the Open pairs with Millie

Hollis. Walter Laucher, of this

area, playing with Marie (Grand-

ma) Ver Linden, were third overall

in the Mixed pairs, and again, Wal-

ter, playing with Tom Batten of

Birmingham had a good game in

the Open Pairs.

Others from this area who made

points in Windsor were Betty Pope,

Helen Barandini, Kay Clinton,

Mary Melchie, Charlotte England,

Foster Veal, Edwin V. Clarke and

myself. Pat and Herb Boyer were

the winners of the consolation

game.

RECENT WINNERS in Birmingham

Tournaments include Norma

Keller and Mary Melchie; Sally

Simmons and Claude Bennett; Dot-

tie and Dr. Harold Barron; Marge

and Al Bettler; Dorothy Kelly and

Ruth Guild; Mr. and Mrs. L. D.

Thompson; Ken Stockman and

Wm. R. Stewart; Cipa and Dr.

Gerald Waller; Ollie Swartzlander

and Greta Slopehead; Hank George

and John Noreen; Adele Todd

and Peg Swanson; Stan Kauafian

and Ann Haskins; Arlene and Dr.

Carl Bolton; Donna Zagrodsky and

Ralph Tyson; Mr. and Mrs. Ken

Cook; Dr. Patrick and Dick Mc-

Carrie; Edwin V. Clarke and Bud

Maybaum.

Don't forget to attend the Southern

Michigan Bridge Association

Sectional Tournament at the Armory

in Pontiac, starting tonight,

and will continue through Sunday.

All clubs in this area are closed

during this meet. Hope to report

your name as a winner.



APARTMENTS

Three bedroom apartment

homes available for November 1 occupancy.

(Hotspot Appliances)

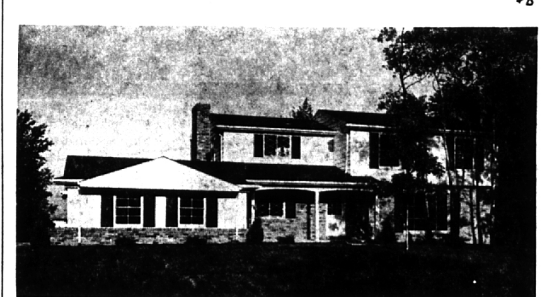
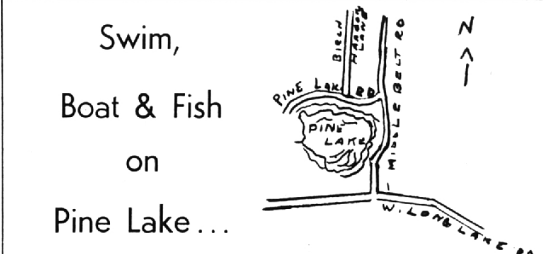
FOX CROFT

APARTMENTS

In Bloomfield

Maple and Telegraph,

Phone JO 5-0111



\$40,500.00

BLOOMFIELD HILLS SCHOOL

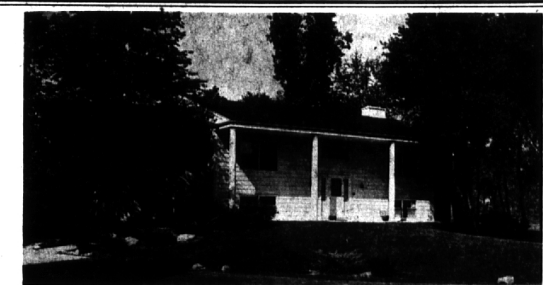
Many beautiful trees add to the attractive landscape making this 4 bedroom Colonial a "STANDOUT" in beautiful Pine Lake Woods Estates. Large family room—first floor utility room—full basement—3 fireplaces—we could go on and on, but suggest you come out and see this lovely home. Open 1-5.

CHARLES J.

VAN HORN INC.

From Birmingham MI 6-2400
576 N. Woodward Ave.

From Detroit JO 4-5644
Birmingham



Lighting your way to better living

BENJAMIN & BISHOP, INC. REALTORS

259 S. Woodward, Birmingham, Michigan

MI 4-3232 — JO 4-5728

TOP VIEW ...

You'll enjoy the rolling beauty of Bloomfield Hills from this high, tree shaded, acre-plus site.

This nearly-new home features:

- ★ Split level entry with circular stairs
- ★ Five bedrooms
- ★ Three baths
- ★ Two family rooms
- ★ Dining room
- ★ Superb kitchen
- ★ Three car garage
- ★ Complete with carpeting and draperies

Inspect it soon!

\$74,500