

AAUW To Aid Students With Used Book Sale

The longest tug-of-war ever contested lasted two hours 41 minutes, and took place in India in 1850 between two companies of British infantry.

Many in Birmingham suffer from "Bibliomania," or a "madness for books." As a cure, a group of American Association of University Women members have or-

ganized and call themselves the "Bibliomanics." They meet each month to learn about books—old ones, new ones, rare ones and unique ones. They

have studied the history of printing techniques, visited the Clements Library of Rare Books in Ann Arbor, The Little Red Book House in Rochester and used book stores in Detroit.

Bibliomanics are described as "book collectors with a slightly wild look in the eye." And this group, while disclaiming the wild look, enjoys discussing books together.

THROUGH the summer, they serve AAUW as the marking committee for the huge used book sale held each fall.

This year's sale is the 37th one offered by Birmingham branch. About 30,000 books will have been collected by Sept. 21, when the sale opens in Demery's Birmingham Room at 9:30 a.m.

Twenty-four tables will feature books of every type from baby and travel books to mystery, fiction and texts — from children's books to rare and first editions. Proceeds from the sale provide fellowships for graduate study.

SALE DATES are Sept. 21-26. Hours are from 9:30 a.m. to 5 p.m. each day except Thursday and Friday, when closing time is 8:30 p.m.

Mrs. G. Knight Houghton, chairman of the sale, has announced a new policy. Due to the huge selection of books, a special move-in will be accomplished Wednesday so that visitors will have a new selection in the middle of the week.

Fall Color Service Offered in Lansing

To assure visitors where and when the Michigan fall colors are at their best, a personalized fall color tour reporting service will again be available this year, according to William T. McGraw, Michigan Tourist Council director.

The service, instituted 10 years ago, advises individuals requesting the information when colors are best for viewing in various regions of the state.

THE FOLIAGE normally begins to change in September in the upper peninsula, then gradually spreads downward to southern Michigan in early October and continuing throughout the month.

Persons wishing to be advised on Michigan's big fall show may receive the free service by contacting the Michigan Tourist Council, Lansing 48206.

ADVERTISEMENT

Now they can
make diamonds
OUT OF
PEANUT BUTTER

A SCIENTIST in a research laboratory stuck a dab of peanut butter into a machine, and flipped a switch. Presto! The peanut butter had been transformed into a sparkling diamond.

The magic here was high pressure. This special hydraulic press is able to apply more than one million pounds of pressure per square inch. It transformed such carbon as was in the peanut butter into what could be used as an industrial diamond. Mother Nature, scientists say, would require millions of years to make the same transformation.

High pressure in science is performing more and more miracles. Used on graphite, which is pure carbon, one machine has made more than two tons of graphite diamond, for use as versatile abrasives.

The latest product, called Borazon, developed by high pressure on cubic boron nitride, will withstand intense high temperatures, and is expected to open up new horizons as semi-conductors of electricity or as transistors. "We could play a radio in a blast furnace with transistors made of that stuff," says its inventor.

Well, we're glad to know that "high pressure" has a good use somewhere. Certainly it has no place at our office. In the business of selling real estate, we consider "high pressure" a horrid word. And we shun it like the plague. We simply don't believe that satisfying real estate transactions, whether a commercial lease, or the sale of a house, can be arrived at by pressure tactics. The surest sign that such is not the case at our office is when both parties to a completion are smiling as they sign the papers. Chamberlain Real Estate, 925 S. Harbor, believes in letting the facts about real estate property speak for themselves.

WEST BLOOMFIELD Builders' Model Homes Immediate Occupancy in Shenandoah

GOLF COUNTRY CLUB ESTATES
Detroit Sewer System

Community water, underground
utility wires, lake privileges.

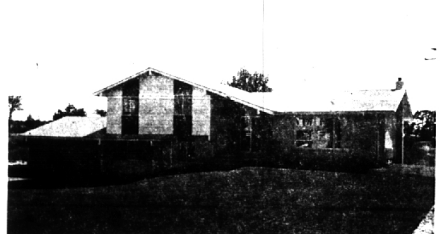
THE WINCHESTER



5351 Pocono Drive

4 bedrooms—2½ baths. Recessed entry to spacious central foyer and peerless traffic pattern, service door near half-bath is convenient for children's use, 20 x 10 covered porch off family type kitchen, ideal for outdoor living. Carpet, drapes and 109 ft. landscaped lot.

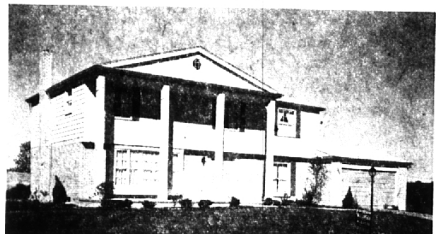
THE ALLEGHANY



5350 Pocono Drive

A tri-level home, just right for the rolling terrain—4 bedrooms, 2½ baths, study, family room with fireplace. Cathedral ceilings in the large living room, dining room and kitchen.

THE MT. VERNON

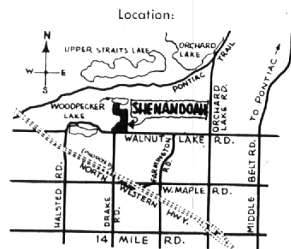


5367 Pocono Drive

Five bedrooms—one huge master size with walk-in closet and private bath, 23 ft. family room, fireplace, first floor bedroom can be used as den, carpeted throughout, drapes and landscaped lot.

All three priced in the low thirties with terms of 25% down—30 yrs.—5½%.

OPEN FRIDAY - SATURDAY - SUNDAY—1:00 to 8:00 P.M.



GORDON WILLIAMSON
Gallery of Homes

4066 W. Maple Rd., Birmingham
646-2535

Offices in Detroit, Dearborn, Farmington, Birmingham

PANEL YOUR WALLS
for **BEAUTY**
...Easy maintenance.

THE FAVORED WALL TREATMENT
The cheery warmth and beauty of wood paneling plus its easy maintenance makes it a popular wall treatment!

CHECK THESE VALUES TODAY!

ANTIQUE LAUAN, 4x8'	\$5.45
NUTMEG SEN (ASID) 3 16", 4x8'	8.95
SPRING CHERRY, 4x8' (print)	6.95
FIRELIGHT CHERRY, 4x8' (print)	6.95
ORCHARD PECAN, 4x8' (print)	6.95
BLONDE LAUAN, 4x8'	5.45

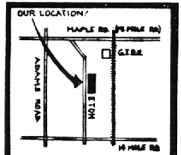
FREE DELIVERY ON 6 PANELS OR MORE.

PLYWOOD
Sanded 1/4" - 1/2" \$2.79 C & C

ALUMINUM Pre-Hung COMB. DOOR
Full 1" Thick Complete with Hardware \$21.95 C & C

ASPHALT DRIVEWAY SEALER
5 Gal. Pail \$5.95

PLEASE EXCUSE OUR TEMPORARY CROWDED CONDITION DURING OUR EXPANSION PROGRAM. WE ARE DOING BUSINESS AS USUAL.



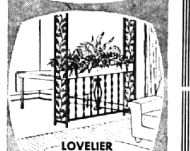
Folding Stairway

MAKE ATTIC AND GARAGE HANDY FOR STORAGE. Completely Assembled. 25" x 54" opening fits ceilings to 8'9". \$16.88 C & C

BI-FOLDING DOORS

Complete with Hardware

W. P. LOUVER	
2'0" x 6'8" x 1 1/2"	17.35
2'6" x 6'8" x 1 1/2"	18.75
3'0" x 6'8" x 1 1/2"	19.95
4'0" x 6'8" x 1 1/2"	33.25
5'0" x 6'8" x 1 1/2"	35.95
6'0" x 6'8" x 1 1/2"	37.50
BIRCH FLUSH	
2'0" x 6'8" x 1 1/2"	13.55
2'6" x 6'8" x 1 1/2"	14.75
3'0" x 6'8" x 1 1/2"	16.45
4'0" x 6'8" x 1 1/2"	23.95
5'0" x 6'8" x 1 1/2"	27.50
6'0" x 6'8" x 1 1/2"	30.35
MAHOGANY FLUSH	
2'0" x 6'8" x 1 1/2"	11.70
2'6" x 6'8" x 1 1/2"	13.25
3'0" x 6'8" x 1 1/2"	14.65
4'0" x 6'8" x 1 1/2"	21.65
5'0" x 6'8" x 1 1/2"	23.35
6'0" x 6'8" x 1 1/2"	25.95



VOLVO PHOS-FUSED COMPLETELY ADJUSTABLE RAILINGS & COLUMNS

DO-IT-YOURSELF
SAVE 1/3
AND MORE

OPEN DAILY
7:30 - 4:30
1:30 - 3:30 Friday
1:30 - 5:00 Saturday

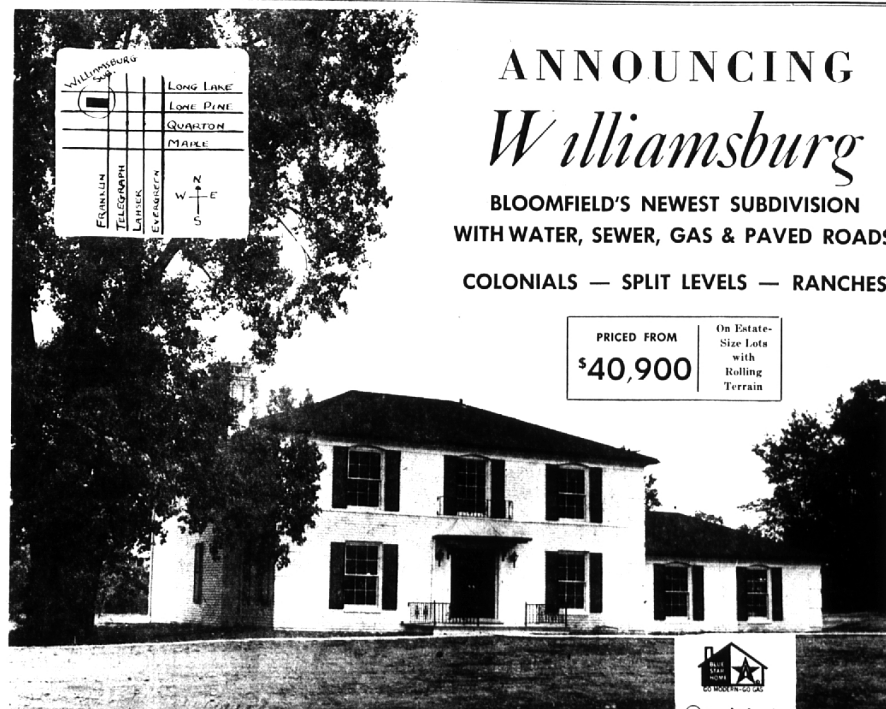
425 S. ETON BIRMINGHAM MI 4-5300

ERB-RESTRICK Lumber Company

ANNOUNCING
Williamsburg
BLOOMFIELD'S NEWEST SUBDIVISION
WITH WATER, SEWER, GAS & PAVED ROADS.
COLONIALS — SPLIT LEVELS — RANCHES

PRICED FROM
\$40,900

On Estate-Size Lots with Rolling Terrain



COLEMAN & MOSS Builders

OFFICE: 647-1998

Developers of Distinctive Subdivisions

MODEL: 646-2586
or 626-0149