

NO PICTURE!  
YOU MUST SEE IT  
TO BELIEVE

In Birmingham  
862 Glenhurst  
North off Lincoln Blvd.

A Contemporary Colonial designed by one of Birmingham's most renowned Architects and set in a superbly wooded site. Custom built by mastercraftsmen, it includes your every desire. Now ready for immediate occupancy.

\$44,500

**Snyder & Snyder**  
BUILDERS INC.  
Phone UN 3-9629



### ON EXCLUSIVE RUSSELL ISLAND

37 miles from Detroit at Algoma, facing the main channel of St. Clair River, with picture window views of the boat traffic, 400 feet frontage extending through to deep canal with two large boat houses. Residence built of finest materials. Glamorous pine paneled interior, completely air conditioned. Spacious living rooms for entertaining. Four large twin bedrooms first floor, each with tile bath. Two bedrooms and bath with additional space on second floor. Exquisite furnishings with decorator decor. Professionally landscaped grounds. Priced to sell. Immediate possession. Contact Mr. Snyder.

**Weir, Manuel & Snyder, Inc.**

298 S. Woodward Avenue  
Birmingham, Michigan

Birmingham 644-6300  
Detroit 566-2323



42-FOOT VAN HOUSES TRAVELING ART SHOW  
Inside story is on "American Heritage."

## Atlantis Sponsoring Visits by Artmobile

Jack U. Klarr, president of Birmingham's Atlantis Society, an affiliated member of the Founders Society of the Detroit Institute of Arts, has announced two stops in this area for the institute's Artmobile.

The public is being invited for 8 p.m. Wednesday to the Birmingham Country Club.

The Artmobile will be on display there after the Atlantis annual fall meeting. Highlight of the open meeting entitled "Something for Everyone" will be movies of spring touring and skiing in Europe.

Ralph Getsinger will also reveal plans for this year's Atlantis tour for members, which will leave Detroit Feb. 29 for Zurich, Switzerland. Once there the group will separate and scatter to different parts of Europe, either to ski or to sightsee in the spring off-tourist season.

THE ARTMOBILE will be parked behind Kresge's in Birmingham Sept. 17 and again will be open to the public at no charge, from 10 a.m. to 6 p.m.

Hostesses Wednesday evening and next Thursday will be Honor Williams of the Founders Society, Mrs. E. Ross Hanson, Mrs. Robert Effe, Mrs. William A. Compton, Mrs. Jack U. Klarr, Mrs. Ralph Getsinger, Mrs. Edgar Farrell, Mrs. Philip Moon, Mrs. Henry Wolfenden, Mrs. Richard Kern, Mrs. W. Ogden Vogt and Mrs. Richard Barnard.



'GIRL AND LAUREL'  
By Winslow Homer

AS THE FIRST annual exhibition for the Atlantis Society, the Detroit Institute of Arts collection has been assembled to represent our "American Heritage."

Works ranging from the 18th century to the present day, by such famous artists as John Singleton Copley, Thomas Eakins, Winslow Homer and Ben Shahn, have been selected to portray this country and the people in it.

The visitor to the artmobile will be able to see the rural countryside as well as the urban view of America. Choice selections from the institute's collection have been made so that the artmobile represents some of the highest quality among Detroit's American holdings.

THE LARGEST exhibition of its kind, the selection requires a specially designed air-conditioned van, 42 feet in length, presented by the Chrysler Corp.

Willis F. Woods, director of the Detroit Institute of Arts, states: "The most detailed attention has been given in study and preparation to make this the best possible exhibition of its kind in the nation."

## Film Festival To Spotlight Renaissance

"The Renaissance Film Festival," with films by Bloomfield Hills artist Clifford West, will be held at 8 p.m. Sept. 25 and Oct. 2 at Cranbrook's outdoor Greek Theatre on Lone Pine Road, Bloomfield Hills.

The programs are being given by the Kingswood School Cranbrook Alumnae Association to benefit its scholarship fund.

WEST, WHO LIVES at 225 Lone Pine Road, Bloomfield Hills, made the films a year ago in Italy. This is the first time they will be shown in the Birmingham - Bloomfield area.

The Sept. 25 films include "The Cathedral and Baptistry of Florence," "The Florentine Workshop of the Pietre Dure," "The Davids of Florence" and "Michelangelo: The Medici Chapel."

The Oct. 2 offerings are "Florentine Architecture of the Renaissance," "Siena," "The Basilica of San Lorenzo" and "The Cantoria of Luca Della Robbia."

## New Instructor Joins Dance Staff At Conservatory

The Birmingham Conservatory of Music dance department announces the addition of Elizabeth Appleton to the modern dance department. Mrs. Appleton is a new resident to Birmingham, at 1511 E. Maple Road.

Her teaching experience has been with Oakland University, Wayne State University, George Washington University and the University of Minnesota; her performing has been with the Bennington College Dance Workshop, the George Washington University Dance Group and the University of Minnesota Orchestra.

Mrs. Appleton will be at the faculty open house for the public Saturday from 10 a.m.-1 p.m. at the conservatory to talk with anyone interested in creative dance. The conservatory is at 831 E. Maple Road.

## AAUW Sets Theatre Tea

The annual opening tea for members and guests of the Children's Theatre Group of American Association of University Women will be held at the home of Mrs. Robert Henry, 141 Paritan, Birmingham, at 1:15 p.m. Wednesday.

Cohostesses will be Mrs. Francis Matousek, Mrs. Robert Cousteau and Mrs. Chalmers Brown. The tea is open to the public.

FIRST production this fall will be "The Nuremberg Story" to be presented Nov. 7 in the Birmingham Theatre, and directed by Mrs. Chalmers Brown. Tryouts will be held at her home Monday.

The new slate of officers is Mrs. Stuart Knowlton, chairman; Mrs. Francis Matousek, vice chairman; Mrs. H. Dean Clark, treasurer and business manager; Mrs. George Bliss, secretary; Mrs. Granville Ryan, school representative; Mrs.



BOB TROMBLEY, Chamberlain

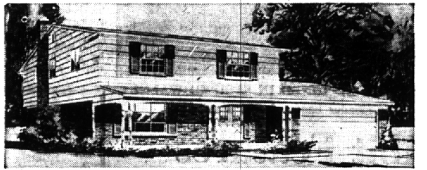
Real Estate Company Board of Directors Member, brings to their firm mature Real Estate experience after devoting sixteen years to Real Estate Sales. Bob and his wife reside on Castle Drive in Birmingham. If you are in the market for a new home or anxious to sell yours, you can reach Bob at MI 6-0900.



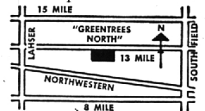
## Birmingham Schools in "GREENTREES NORTH"

Consider the advantages of this area of fine homes:

- Birmingham schools
- Minutes from Birmingham and Northland Shopping Centers
- In Suburban North Woodward
- Easy access to Southfield and John C. Lodge Freeways
- Parochial Schools and Churches nearby
- City water and sewers
- Choose from Colonials, Tri-Levels and Ranches
- Homes have family rooms, natural fireplaces, 2-car attached garages, dishwashers and other features



The Camden, one of five models, is a four-bedroom Colonial with 2 1/2 baths, 2-car attached garage, separate dining room, family room with natural fireplace . . . storms and screens, built-in Hotpoint dishwasher, oven and range and dozens of other features . . . 2031 Sq. Ft. of living area plus full basement. Its price is \$29,900.00. Other models are priced from \$27,500.00. All prices include 7 1/2 foot site.

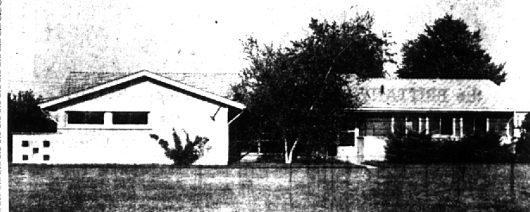


OPEN  
Daily and Sunday 1-9 p.m.  
Saturday 1-6 p.m.

**MARK BUILDERS, Inc.**

10222 WEST NICHOLS ROAD, DETROIT, MICHIGAN  
MODEL PHONE: 544-4143 • OFFICE: DI 1-0880

## MOVE IN NOW—



LARGE SEMI-SUBURBAN SITE—160x200 approximately with nice landscaping and trees on a quiet street. VAUGHAN and BLOOMFIELD SCHOOLS.

Very large Living-Dining room with studio ceiling and brick-paneled fireplace wall with raised hearth.

Family room with fireplace too. EXCELLENT KITCHEN with built-in oven, stove, dishwasher, disposal. Large eating space.

State entry. Pull-down stairs for storage. 2 1/2 car Garage. 3 good Bedrooms, 2 full Baths.

Fully carpeted. Draperies included. Newly decorated—fresh and clean throat.

OWNER HAS MOVED OUT OF TOWN. PRICE IS REDUCED TO \$27,900 FOR QUICK SALE AND IMMEDIATE POSSESSION.

CALL FOR AN APPOINTMENT and MAKE AN OFFER.

**SNYDER KINNEY  
& BENNETT**  
INC.

MI 4-7000  
239 S. Woodward  
Birmingham

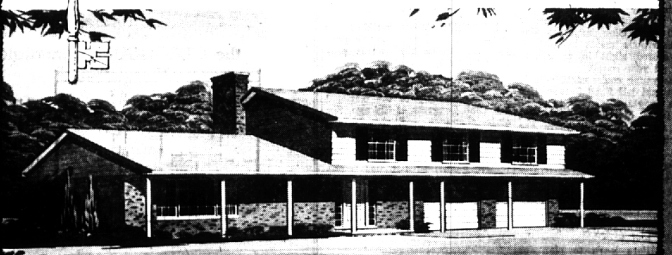
Realtors

MA 6-9600  
32740 Franklin  
Franklin

## GRAND OPENING

of a Brilliant New Model Home in

*Adams Square*  
IN BLOOMFIELD



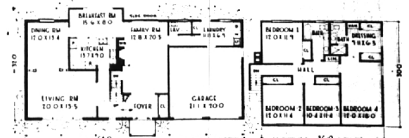
This charming and distinctive BLOOMFIELD community welcomes  
the newest addition to the family of MACKSEY finer homes!

All the priceless advantages of suburban Bloomfield are yours to enjoy when your family moves to Adams Square. And you can choose from five models including the exciting "NEW BEDFORD", a split-level in choice of 4 or 5 bedroom type. This glamorous new addition to Adams Square features a 10' x 15' breakfast nook, 2 car garage and a host of other features ALL INCLUDED IN THE PURCHASE PRICE! Your family will delight in the park-like atmosphere of this country community. Why not bring them out this weekend and try on the "NEW BEDFORD" for size?

Every Home in Adams Square,  
including the NEW BEDFORD,  
contains ALL these  
custom features:

- Attic Fan
- AM-FM Intercom
- Outside Lamp Post
- Full Farmica Kitchen Backsplash
- Dishwasher
- Tassera Kitchen Flooring
- Incinerator
- Toppin Push Button Plumbing
- Storm and Screens
- Shower Door
- Painted Basement
- Painted Kitchen Cabinets
- Parquet Flooring
- Finished Garage
- Large Tree Farm Plot

Unique 2,550 Square Foot Floor Plan Makes  
the "NEW BEDFORD" an Outstanding Value!



New Bedford \$31,900 OTHERS AS LOW AS \$26,900

All five models in Adams Square are  
magnificently furnished. See them this week-end.

Model Hours: 12 Noon to 8 p.m.  
Model Phone: MI 4-7611

**mack Macksey**  
INC.

Builders of fine homes in fine areas for 35 years