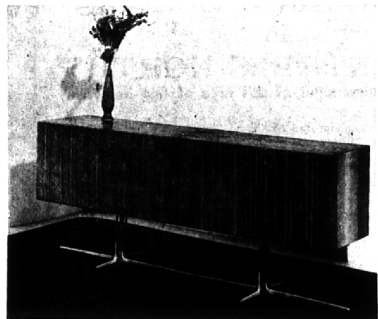




HOMEMAKING



MODULAR UNITS DESIGNED IN STRIPED WALNUT
Stand on slender bases of cast aluminum

Exhibit Features Varied Hardwoods

Furniture exhibits in the Pavilion of American Interiors at the New York World's Fair show the widest range of styles and designs the world has ever seen, adapted to mid 20th Century American living. And they are seen in the greatest variety of beautiful hardwoods the world has ever known, adapted to mid 20th Century American living. Since hardwood forests are as old as the world, the query might be, "what can be new about furniture woods?" There are some 50,000 species of hardwoods known to botanists. However, only about 250 are normally available for commercial use. And only about 50 of these are extensively used in American furniture production.

AS MORE and more forests in North America, Africa and the Far East become accessible by trucks, tractors, hoisting and dragging equipment, many of the fine furniture woods, formerly scarce and costly, are more readily available. One authority says it takes more than a generation for a "true" wood to become important for commercial use, especially in the furniture industry. History tells a story of long oblivion for a number of woods now taken for granted.

AVOUDRE, A creamy golden hardwood from the African Gold Coast is cited as an example. About 30 years ago one or two logs were brought to this country. The color, texture and figure were much admired, but furniture manufacturers hesitated to use it, mainly because of worry over a constant supply. The furniture made from that first shipment sold quickly even though it was rather high priced. In the Pavilion, avodire is seen in a moderately priced, correlated bedroom group of furniture, in distinctive 20th Century design.

AN UNUSUAL and exotic wood, to the English, when Queen Anne came to the throne, was walnut. Her preference for the light soft brown color and the graceful rippling figure of walnut, plus her orders to cabinet makers for really, more graceful furniture, rather than the English Oak furniture tradition.

4-H Club Takes Part In Project on Foods

Imagine not having to worry about what to buy at the grocery or what to serve for the next meal! While they may not be completely without problems, nearly 160,000 4-H Club members can plan nutritious meals made from foods stored right in their own homes all year round. These young cooks participate in the national 4-H Food Preservation awards program sponsored by the Kerr Glass Manufacturing Corp., which for 36 straight years has supported 4-H.

THIS YEAR in cooperation with the extension service, the program is broadened to include the freezing as well as canning of foods. Special emphasis is placed on nutrition, particularly the importance of fruits and vegetables.

The 4-Hers learn to plan for family needs which involve canning, freezing and pickling millions of jars and packages of food annually. They tell of the convenience of having a variety of food available in the freezer or on the pantry shelf. Substantial savings are realized by preserving quantities of fruits and vegetables in season to be enjoyed through winter months.

MEMBERS WHO satisfactorily complete a food preservation project are eligible for awards provided by Kerr.

This fall state winners from coast to coast will be treated to an expense-paid trip to the National 4-H Club Congress at Chicago. Six state champions will be selected for national honors and \$500 college scholarships.

Outstanding county participants receive gold-filled 4-H medals recognizing their achievements. Last year some 5,700 club members won a medal for work in the food preservation program, according to the National 4-H Service Committee.

Center Offers Photo Classes

Two courses in photography are being offered this fall by the University Center for Adult Education (Wayne State University, the University of Michigan and Eastern Michigan University).

"Basic Black and White Photography" meets for 12 weeks, beginning Sept. 23. Designed for beginners, the course will familiarize students with the operation of cameras, light meters, films and developing procedures, printing, and enlarging.

OFFERED cooperatively with the Detroit Institute of Arts, the "World of Color Photography" meets alternate weeks from Nov. 1 through mid-April.

This course provides a series of lectures for people having some basic familiarity with photography. The comprehensive lectures examine color photography from the points of view of the photographer, artist, gallery director, photo-finisher, engraver and printer. Registrations may be made at the center's office in Detroit through Sept. 19.

Time studies conducted by Michigan State University researchers show that three milking machines are less efficient than two if the milking is done by one man. Cows respond better if they are milked immediately after washing.

Cranbrook Gives Medal To Botanist

Dr. Edgar T. Wherry, retired professor emeritus of the University of Pennsylvania's department of botany and authority on phlox and ferns, today is being awarded the Mary Soper Pope Medal by Cranbrook Institute of Science, Bloomfield Hills.

Presentation is being made by Dr. Robert T. Hatt, director of the Institute of Science, at the Academy of National Sciences, Philadelphia, on the occasion of Dr. Wherry's 70th birthday.

DR. WHERRY, a native Philadelphian, was in government service as mineralogist, crystallographer and chemist before coming to the University of Pennsylvania, from which he retired in 1955 after 34 years.

In his career as a professional botanist, he was able to draw attention to problems of habitat, soil acidity and rock formation in relation to plant growth and distribution.

Dr. Wherry is associated in the minds of many biologists with plant ecology. However, his interests extend into plant classification as well, and over the last 35 years, he has become recognized as a world authority on the phlox family and on ferns and their allies.

HE PUBLISHED "Guide to Eastern Ferns" in 1942, the "Wild Flower Guide" in 1948, "The Fern Guide" in 1961, and the series is soon to be brought to completion with publication of "Southern Fern Guide."

The Mary Soper Pope Medal was established by the late Gustavus D. Pope, a trustee of Cranbrook Institute of Science, in memory of his wife. The medal, first awarded in 1947, was struck by sculptor Marshall Fredericks of Birmingham.

Cranbrook Institute of Science was founded in 1930 to conduct of scientific knowledge.



DR. EDGAR T. WHERRY

Named to Head U-D Admissions Office

The appointment of Fred W. Shadrick as director of admissions at the University of Detroit has been announced by the Very Rev. Laurence V. Britt, S.J., U. of D. president.

Shadrick, 39, comes to the University of Detroit from Oakland University where he was assistant director of scholarships and admissions officer.

SHADRICK HAS announced an expanded visitation schedule which will bring at least one member of the Admissions Office into every high school in Michigan during the coming year to explain the U. of D. curriculum and program to potential college students.

Michigan cities to be visited in the near future include Birmingham, Southfield and Bloomfield Hills.

Collectors Meet

A coin auction featuring an exchange table, was held Wednesday at The Community House, Birmingham.

Sept. 10, 1964 THE BIRMINGHAM (MICH.) ECCENTRIC 5-D

Prescription for Profit: A Want
Ad by phone or mail.

THERE ARE SEVERAL . . .

. . . good residential areas. The best is
in *Overbrook**

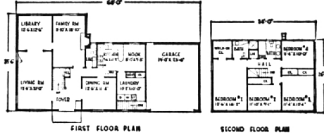
MAX BROOCK INC.

MI 4-6700

*West Long Lake and Lahser Roads



the NORMANDY—Immediate Occupancy—\$37,900

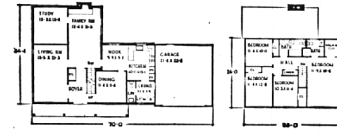


Four bedrooms, 2½ baths, library. Large basement, 1st floor laundry. A large, exciting residence designed in the classic French Provincial style. Beautifully landscaped lot, exquisite carpet and drapes included.

Need a beautiful new home at once? Choose from six . . . call the van!



the WADDINGTON—Immediate Occupancy—\$35,900



A center-entrance Colonial of magnificent proportions. Four bedrooms (including owners' suite), 2½ baths. Private study/office for father. This is a 1-a-g-e home . . . well designed . . . constructed with loving care by dedicated builder . . . a residence of perfection.



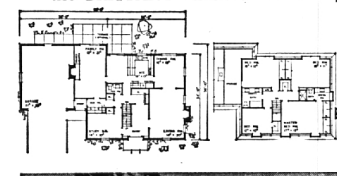
the GEORGIAN—Immediate Occupancy—\$40,900



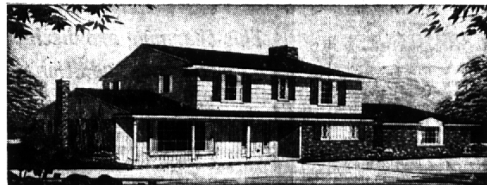
This impressive residence just completed on picturesque Loch Kirkwood with a view of the water from the family room, dining room and kitchen. Four bedrooms, 2½ baths, den. Custom designed, carefully hand-crafted.



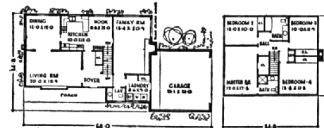
the BRITTANY—Immediate Occupancy—\$45,600



The authentic Mansard roof line of this French Provincial design makes for a truly unique new residence. Four bedrooms, 2½ baths, basement. Huge bonus area over garage may be used for studio or maid's quarters.



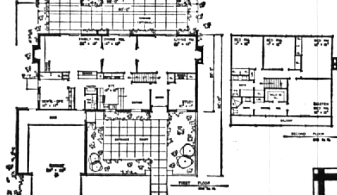
the SHERWOOD—Immediate Occupancy—\$34,900



Distinctive "wing" Colonial design features four bedrooms, 2½ baths. Wind-protected patio area is reached through sliding glass window-wall from spacious family room. "Step-saver" 1st-floor laundry. Spacious basement.



the MONTEREY—Immediate Occupancy—\$44,900



An outstanding residence situated on a large lake lot with a beautiful view from the rear-facing living room. Four bedrooms, fifth bedroom or study on the first floor. PLUS a sewing room or office with an outside entrance. Two fireplaces, 2½ baths. Front courtyard has brick terrace wall and gate.



Folk Concert

Folk singer Josh White will appear for nine concerts Friday through Sunday at The Raven Gallery, 136 Brownell, Birmingham. Showtime begins at 9:30 p.m. He also will perform, along with the Mandrell Singers, at an orientation program at Oakland University, Rochester, at 8 p.m. Friday. The campus program is open to the public.

THOMPSON-BROWN Company

HOMES OPEN from 11 a.m. to 8 p.m. Monday through Friday and Sunday. Until 6 p.m. on Saturday. Closed on Thursdays.
KIRKWOOD PHONE: MA 4-7522
Office Phone: KE 1-8700

