



ADMIRING a prize-winning photo are 1964-65 officers of the Bloomfield Hills Camera Club. They are (from left) Mrs. Gene Newton of Oak Park, treasurer; Harold F. Renner, 7207 Brookridge Drive, Birmingham, secretary; Charles Griffith of Drayton Plains, president; and Otis A. Crosby, 4064 W. Orchard Hill Drive, Bloomfield Township, vice president.

Camera Club Slates First Fall Meeting

The Bloomfield Hills Camera Club, Charles Griffith, president, announces the first meeting of the year at 8 p.m. Monday.

Tom Helfrich of the Expert's Camera Shop, Pontiac, will address members and their guests on the subject of herpetology of Michigan. He will show color slides representing various techniques in photography in which he features the reptiles and amphibians of the state.

The meeting will be held in the Cranbrook Institute of Science, Lone Pine Road, Bloomfield Hills. The club meets the first and fourth Mondays of each month at 8 p.m. Meetings are open to the public.

Term

(Continued from 1-D)

fellows from all over the country, teaches painting. Prof. Mary Jane Bigler, who has recently returned from Europe after three months on a travel grant from Wayne State University, teaches water color.

New in George Vihos, recently returned from the University of Athens, Greece, and an exhibitor in the Pan Hellenic Art Exhibition. He is teaching an evening figure and portrait painting class. Other drawing and painting classes, from basic, experimental, and advanced, are taught by Jean Harding Brown, Thad Brykalaki, Robert Konerman, Ken Fadem and James Vredevoogd.

INSTRUCTORS for nine young people's classes are George Landino, head of the Groves High School art department, and Susan Smyly, from Cranbrook. This is the same team repeating classes from a summer term which 75 students attended.

Howard Machette and Carolyn Switzer, both from the Birmingham junior and elementary schools, teach the children with techniques used by Victor D'Amico, director of adult and children's education at the Museum of Modern Art.

Classes meet once a week for two and one-half hours, for a term of 10 weeks.

Young people meet for two hours once a week, and children meet for one and one-half hours.

A brochure of registration for the BAA can be obtained at 1516 S. Cranbrook Road, Birmingham. Registrations will be accepted through the first 2 weeks.

Film

(Continued from 1-D)

Paul was his "clean" grandfather, who was the trouble maker.

Ringo's part was more sympathetic than the others. By the end of the film, everyone in the audience felt sorry for him, for being "so little."

The Beatles didn't really act. They just played themselves, and I think that's what makes the movie the success that it is.

Their approach to the songs in the picture was interesting. One of their guitars and drums appeared out of nowhere while they were playing cards, and after the song was finished, the instruments disappeared, and they went back to their card game.

There was no obvious plugging for their album.

THE HUMOR in the film was light and just plain funny. There was a lot of satire, especially with the press conference that was held.

Before seeing the movie I wondered what the title "A Hard Day's Night" meant. After I saw it I found it meant that "since you've done a hard day's that night, you can hardly have a day's night that day."

Sculptor to Speak

Sculptor Marshall Fredericks, 440 Lake Park, Birmingham, will discuss "Sculpture As I See It" at a 2 p.m. program of the Treasure Shop Tea at the International Institute in Detroit. Dessert luncheon at 1 p.m. precedes his talk.

Movie Guide

Parenteen Committee
Birmingham P.T.A. Council

MOVIE	Green Sheet National Legion of Decency
I'd Rather Be Rich	A-2
This Happy Feeling	A-3
Flipper's New Adventure	A-1
Rhino	A-1
Ensign Pulver	A-MY-Y
	A-2

* recommended as superior entertainment especially for children

CODE GREEN SHEET

These audience symbols are intended as broad guides to selection, and do not indicate either recommendation or non-recommendation of the films to which they are applied.

A	Adults
MY	Mature Young People
Y	Young People (12 years to 16 years)
C	Children (unaccompanied by adults)
GA	General Audience

NATIONAL LEGION OF DECENCY

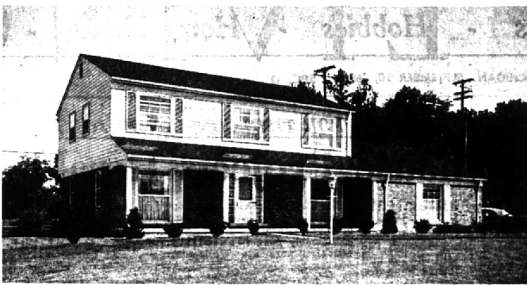
A-1	Morally Unobjectionable for General Patronage
A-2	Morally Unobjectionable for Adults and Adolescents
A-3	Morally Unobjectionable for Adults
B	Morally Objectionable in Part for All
C	Condemned

SC A separate classification is given to certain films which, while not morally offensive in themselves, require some analysis and explanation as a protection to the uninformed against wrong interpretations and false conclusions.

Show Religious Art

More than 250 artists have accepted invitations to show their work at the 4th biennial National Religious Art Exhibition Oct. 8 through 25 in the galleries of Sacred Heart Seminary, Detroit.

LIKE WISHING ON A STAR



EVERYTHING YOU WANT . . .

- ★ COLONIAL (2 YEARS OLD)
- ★ 4 LARGE BEDROOMS
- ★ 2½ BATHS
- ★ paneled family room (large)
- ★ SEPARATE DINING ROOM
- ★ FULL BASEMENT
- ★ EXCELLENT LANDSCAPING
- ★ FIRST FLOOR UTILITY ROOM

SEE **DON WHITFIELD**

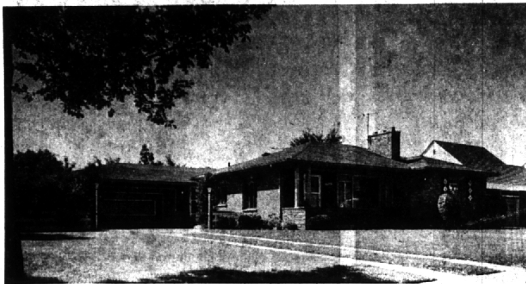
BERNDT, ETTER & VAN MAAREN, INC.

360 Hamilton

Realtor

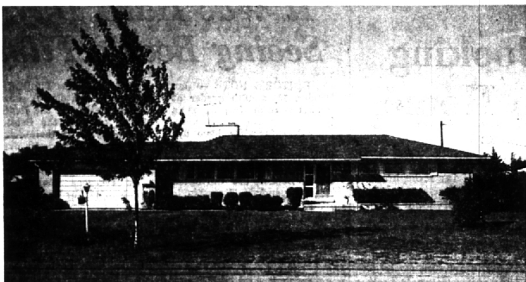
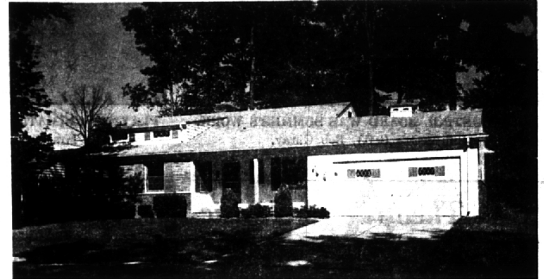
MI 4-3500

THE FINEST RESIDENTIAL PROPERTY
AVAILABLE and a special brand of friendly personal service
are yours at 460 WOODWARD NORTH



Birmingham Schools
5 bedrooms, 2½ baths
Kitchen with Breakfast space
Patio, lovely yard
Family Room
Fireplace

Birmingham Schools
3 bedrooms, 1½ baths
Family Room
2 fireplaces
Patio
Breakfast Room
Kitchen with built-ins
Carpeting and draperies



3 bedrooms, 2½ baths
Family Room
2 corner fireplaces
Kitchen with built-ins
Sliding glass doors in LR
Carpeting and draperies



FRED PIERCE INC.

460 NORTH WOODWARD, BIRMINGHAM, MICH.

Midwest 7-1414

HALL & YOUNG



Showcase
of homes
REALTORS

BIRMINGHAM
345 S. WOODWARD
MI 6-7900

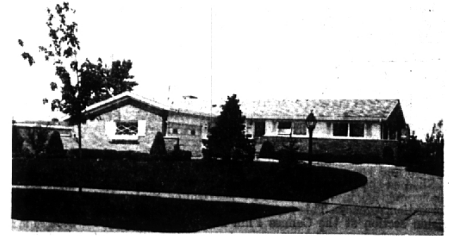
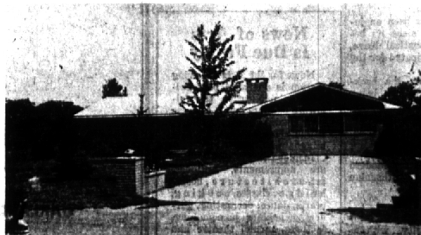
BLOOMFIELD
4114 W. MAPLE
MA 6-5900

OPEN TILL 9 P.M.



BLOOMFIELD VILLAGE—A handsome and substantial older Colonial with all the grace, spaciousness, and quality of its era. FIVE twin bedrooms, 2 tile baths plus lavatory, 3 fireplaces, enclosed porch, full basement, and 2 car att. garage. BEAMED CEILING LIVING ROOM! \$37,500.

VALUE PLUS—Here's a home for the large family that must be conscious of its housing budget. There are FOUR nice bedrooms, a huge 20 x 23 ft. family room, an enclosed and heated porch, and cheery, spacious kitchen. PRICED AT JUST \$20,900.



SUPERB CONDITION—You'll find this all-shaped Ranch one of those rare homes that's in immaculate "move-in" condition. Three excellent bedrooms, 2 glistening tile baths plus lav., and relaxing family room. Cool screened porch, full basement, and att. 2 car garage. SEE IT NOW! \$32,900.

FOUR BEDROOMS—Located in a desirable Parochial school district, this 3 yr. old Colonial enjoys a large 150 x 150 ft. site. There is a 23 ft. paneled family room with fireplace, convenient utility and mud room, 2½ baths, and att. 2 car garage. LOOK! \$27,900.

