

## Movie Guide

Parenteen Committee

Birmingham P.T.A. Council

MOVIE	Green Sheet National Legion of Decency	
Hard Day's Night	A-1	
Second Time Around	GA	A-1
What A Way To Go	A-MY	B
Mr. Hobbs Takes a Vacation	A-MY-Y	A-1
The Wackiest Ship in the Army	GA	A-1
Mothra	GA	A-1
I'd Rather Be Rich	GA	A-2
This Happy Feeling		A-3

\* recommended as superior entertainment especially for children

### CODE GREEN SHEET

These audience symbols are intended as broad guides to selection, and do not indicate either recommendation or non-recommendation of the films to which they are applied.

- A. Adults
- MY Mature Young People
- Y. Young People (12 years to 16 years)
- C. Children (unaccompanied by adults)
- GA General Audience

### NATIONAL LEGION OF DECENCY

- A-1 Morally Unobjectionable for General Patronage
- A-2 Morally Unobjectionable for Adults and Adolescents
- A-3 Morally Unobjectionable for Adults
- B. Morally Objectionable in Part for All
- C. Condemned

SC A separate classification is given to certain films which, while not morally offensive in themselves, require some analysis and explanation as a protection to the uninformed against wrong interpretations and false conclusions.

## Piety Hill Arranges Antique Show, Sale

The fourteenth annual Antique Show and Sale sponsored by the Piety Hill Chapter, Daughters of the American Revolution, will be held at The Community House, corner of Bates and Townsend, Birmingham.

The show will run four consecutive days, Wednesday, Thursday and Friday, Sept. 16, 17 and 18, from 1 to 10 p.m., and Saturday, Sept. 19, from 1 to 6 p.m.

Sam Yeagley, of Annville, Penn., dealer in antiques, will again manage the show. A group of exhibitors from Pennsylvania, Ohio, Delaware, Missouri, Illinois and New York, as well as local dealers, will offer American, English and continental antiques of quality, rarity and interest with a wide range of prices.

The display includes antique furniture, old china, glassware, silver, pewter, prints, jewelry and a large collection of old coins and antique dolls.

VISITORS To the show may have luncheon, tea or dinner at The Community House. Piety Hill has had one fund-raising event during the entire year. The proceeds from this show enable the chapter to share with the National DAR in supporting educational, historical and patriotic projects.

Thirteen DAR-approved schools for underprivileged children receive financial aid for new buildings, equipment and scholarships.

Locally, the chapter furnishes American flags for schools, books for the Public Library and magazine subscriptions to the Veterans' Hospital and presents Good Citizenship awards annually to outstanding high school girls in the community.

Members of the committee working on this year's show are:

### ARIZONA

160 Acres (All or Part) in Tucson Mountains Foothills. Fabulous Mountain Views. Fastest Growing Area in U.S. 6 Miles from Downtown Tucson. City Utilities. Bargain.

Write Box No. 25-D, Birmingham Eccentric

### Utley Road



### PRESTIGE... PRIVACY... PERFECTION

... all describe this immaculate 7-room custom brick ranch on a well-landscaped site in Wood Creek Farms. Three nice bedrooms, 2 baths, first floor utility room, 24 foot family room, deluxe kitchen with eating space, full basement, 2-car attached plastered garage. Immediate occupancy. Transferred owner ready to deal. Open weekends till sold.

JOHNSTONE & JOHNSTONE

Greenleaf 4-2177

21010 Orchard Lake Rd., Farmington

## Adventure Can Begin At Breakfast Table

Dietitians at the University of Michigan Medical Center say there is no floor way to yank a day out of dulling routine than concocting an "adventuresome" breakfast.

Protein, vitamin C and some sort of energy food are the three main ingredients of a good breakfast, but the sky's the limit on how you select them.

Eggs furnish routine breakfast protein. But, say the dietitians, you can substitute meat, fish, peanut butter or cheese.

If citrus fruits becomes a hum-drum way of getting vitamin C, switch to melons, strawberries, tomatoes.

Bread, cereal products and sugar are energy foods. For variety try pancakes, packaged cereals, hot muffins or biscuits.

THE U-M food specialists recommend choosing foods you enjoy as the first step toward encouraging better breakfast habits. But, they say, let your imagination work for you, too. Like custard? Top it off with fresh strawberries and milk, add

### Give Final Concerts

The Detroit Symphony Orchestra will present the final Beethoven concert at 8:15 p.m. tonight and Sunday at the Jerome H. Remick Memorial Shell. Valter Paule will conduct.

### Nursing Graduate

Miss Jean Brooks of Birmingham was among 51 graduates of the Ann Arbor Practical Nurse Education Center last night. She is employed with St. Joseph Mercy Hospital in Ann Arbor.

## Three Birmingham Seniors Participate In Science Training

Birmingham residents Robert A. Benninger, Patricia A. Cleary and Jeffrey D. Lazar are among high school seniors who recently attended the National Science Foundation-sponsored Nuclear Science Training Program at the University of Detroit.

Benninger, a student at Southfield High School, resides at 25405 Lathrup Blvd. Marian High School student Miss Cleary is a resident of 3941 Quanton Road. Lazar attends North Farmington High School and resides at 5352 Pebblecreek.

The program, sponsored by the National Science Foundation at the University of Detroit, included 30 high school seniors, chosen by the nomination of their high school principals.

**NOW... Mr. Lot Owner... for the first time... you can have a Timberline Meadows model home built on your lot. See 6 exciting furnished models from \$21,700 to \$26,700 at Timberline Meadows!**

Van Dyke North of 22 Mile Road

VINEYARD HOMES, Inc.

Phone: 731-7660

"QUALITY HOMES FOR 16 YEARS"

## On Study Program

A. Mosby Harvey, 1759 Graefield Road, Birmingham, will visit France this fall as a leader in the Cooperative Overseas Programs sponsored by Dartmouth College and the Experiment in International Living.

School and resides at 5352 Pebblecreek.

The program, sponsored by the National Science Foundation at the University of Detroit, included 30 high school seniors, chosen by the nomination of their high school principals.

## NO PICTURE YOU MUST SEE IT TO BELIEVE

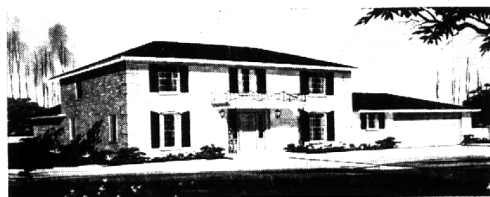
### In Birmingham

862 Glenhurst North off Lincoln Blvd.

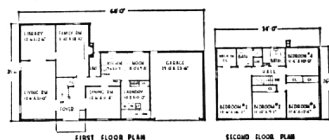
A Contemporary Colonial designed by one of Birmingham's most renowned Architects and in a superbly wooded site. Custom built by mastercraftsmen, it includes your every desire. Now ready for immediate occupancy.

\$44,500

**Anyder & Anyder**  
BUILDERS INC.  
Phone UN 3-9629



the NORMANDY—Immediate Occupancy—\$37,900



Four bedrooms, 2½ baths, library. Large basement, 1st floor laundry. A large, exciting residence designed in classic French Provincial style. Beautifully landscaped lot, exquisite carpet and drapes included.



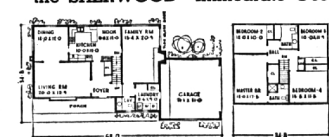
the GEORGIAN—Immediate Occupancy—\$40,900



This impressive residence just completed on picturesque Loch Kirkwood with a view of the water from the family room, dining room and kitchen. Four bedrooms, 2½ baths, den. Custom designed, carefully hand-crafted.



the SHERWOOD—Immediate Occupancy—\$34,900

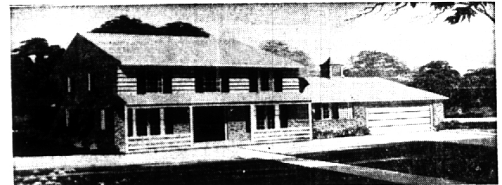


Distinctive "wing" Colonial design features four bedrooms, 2½ baths. Wind-protected patio area is reached through sliding glass window-wall from spacious family room. "Step-down" 1st floor laundry. Spacious basement.

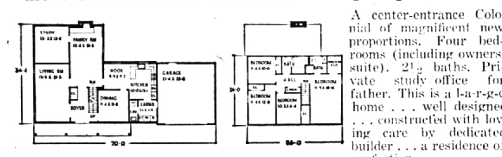
Kirkwood is a unique, finer community located in the Birmingham School District. Residents have a Birmingham mailing address. Each of the six homes now on display is an unusual architectural achievement. All are available for immediate occupancy. Lots are also available for the duplication of any of the homes shown above. In addition, there are six more home designs presently under construction. Many other designs are also available for duplication. See Kirkwood this weekend if you require a home at once or in the near future.

**Thompson-Brown Company**

## Need a beautiful new home at once? Choose from six... call the van!



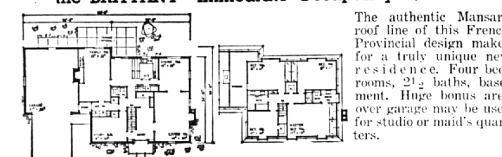
the WADDINGTON—Immediate Occupancy—\$35,900



A center-entrance Colonial of magnificent proportions. Four bedrooms (including owners' suite), 2½ baths. Private study office for father. This is a large home... well designed... constructed with loving care by dedicated builder... a residence of perfection.



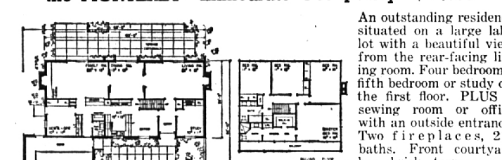
the BRITTANY—Immediate Occupancy—\$45,600



The authentic Mansard roof line of this French Provincial design makes for a truly unique new residence. Four bedrooms, 2½ baths, basement. Huge bonus area over garage may be used for studio or maid's quarters.



the MONTEREY—Immediate Occupancy—\$44,900



An outstanding residence situated on a large lake lot with a beautiful view from the rear-facing living room. Four bedrooms, fifth bedroom or study on the first floor. PLUS a sewing room or office with an outside entrance. Two fireplaces, 2½ baths. Front courtyard has brick terrace wall and gate.



HOMES OPEN from 11 a.m. to 8 p.m. Monday through Friday and Sunday. Until 6 p.m. on Saturday. Closed on Thursdays.  
KIRKWOOD PHONE: MA 6-7522  
Office Phone: KE 1-8700