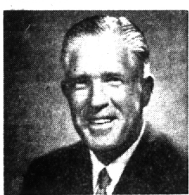


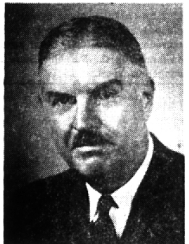
Candidates

(Continued from 1-A)

Farnum held a commanding lead over opponents John H. Burke and Paul J. Rabaut in the Democratic race. Still to be heard from, however, were large areas of Livonia and Redford Township in the newly created 19th.



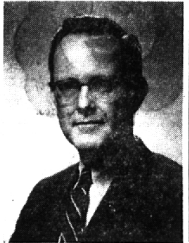
GOV. GEORGE W. ROMNEY



NEIL STAEBLER



WILLIAM S. BROOMFIELD



PHILIP A. HART



MRS. ELLY PETERSON

THE CHRISTIAN SCIENCE MONITOR

Accurate
Complete
News
Coverage

Printed in
BOSTON
LOS ANGELES
LONDON

1-Year \$24 6 Months \$12
3 Months \$6

Clip this advertisement and
return it with your check or
money order to:
The Christian Science Monitor
P.O. Box 1000
Boston, Mass. 02111

PS-16

BIRMINGHAM attorney Thomas Giles Kavanagh led a pack of 14 candidates in a bid for a seat on the newly-created second district court of appeals with 1,199 of the area's 1,381 precincts reporting.

Kavanagh polled 72,429 votes. The five other nominees for the nonpartisan posts were Earl E. McDonald, Lansing municipal judge, 64,383; Francis L. O'Brien, Ann Arbor municipal judge, 61,773; Donald R. Freeman, Flint municipal judge, 54,423; Farrell E. Roberts, former state senator, 52,968; and Timothy C. Quinn, circuit judge in Lapeer and Tuscola counties, 52,263.

Three of the six nominees will be elected to the bench in November.

RESULTS WERE also still incomplete in several of the three Senate and four House districts

that are in the Birmingham-Bloomfield area in the state legislature.

In the 14th senatorial district, which includes the western part of Oakland County and Plymouth and Livonia in Wayne County, the outcome was still undecided.

Newspaper publisher Paul M. Chandler held a 500-vote margin over Pittsburgh Prescott in Oakland County for the GOP leadership. Other Republican contenders were Paul A. Kern, Jr., George L. Westlund and Carl J. Wagenschutz.

In the Democratic contest James McCarthy of Livonia had a commanding lead over A. E. Vallier and Joseph F. Mullaney in Oakland County.

The results could be changed, however, when the heavily populated areas of Plymouth and Livonia report.

BERKLEY MAYOR George Kuhn appeared to have the GOP nomination for the 15th district senate seat. Kuhn had 4,447 votes to Southfield Councilman Thomas Rowley's 2,430.

Oakland County Democratic Chairman Sander Levin led the field of three Democratic candidates with 9,027 to Zigmund J. Niparko's 3,200 and Charles T. Nolan's 2,832.

Troy Mayor Robert J. Huber edged Beverly Hills resident J. Bruce Donaldson by 278 votes for the Republican nomination in the 16th Senate District in the election's hottest contest.

Huber trailed Donaldson most of the night but pulled out in front when the votes were tallied in Troy's neighboring Avon Township.

DEMOCRAT DONALD J. Ober-

holzer was unopposed in the 14th. Two state House of Representatives seats were still undecided Wednesday morning.

In the 63rd house district, which includes part of Troy, former Troy Councilman James F. Carey had a commanding lead of 823 to 193 over O. F. Foster of Clarkston. Democrat Robert J. Slingerland of Lake Orion is unopposed.

State Rep. Raymond L. Baker of Farmington was fighting for his political life in a tight battle with Allan P. Howell of Lathrup Village in the 64th district.

Baker had a 71-vote margin late Wednesday morning.

Democrat John I. Bain of Farmington Township was almost a sure victor over his opponent, Mrs. Evelyn J. LaBelle of Bloomfield Township.

The races in both the 65th and 66th districts have been settled.

BIRMINGHAM attorney William P. Hampton was an easy winner in the GOP contest in the 65th district.

Hampton, 25, received 6,652 votes to Birmingham City Planner William R. Brownfield's 2,735. Other contenders were Stanley M. Brown, 2,448, and Denton F. Hassell, 1,886.

Democrat Ernest W. Nigg, Jr., of Birmingham, was unopposed. He received 1,247 votes.

Former mayor and city councilman of Madison Heights Bill S. Lees' 172 and James F. Thrasher's 162.

In the Republican race Clawson insurance man Roy F. Strauss edged Charles J. Maly 1,538 to William A. O'Brien's, 2,170; David

Marine Dealers Offer Reward for Boy's Murderer

The Michigan Marine Dealers Association has posted a \$10,000 cash reward in the search for the murderer of a Keego Harbor youth.

The reward boosted to \$4,000 the total contributed for information leading to the arrest and conviction of the murderer.

The Oakland County sheriff's department is looking for a brown-and-white motorboat but has few clues.

Anyone with information about the murder is asked to call Lt. Don Kratt in Pontine.

THE BHAM ECCENTRIC Page Sept. 3, 1964 T-A

tion of the person or persons who struck and killed Allan L. Ackerly, 20, Aug. 3 on Cass Lake, 20 miles north of Detroit.

IN OFFERING the reward, Norman Cook, Jr., president of MMDA, said:

"I want to stress that boating is not to blame for this death. It just happened that a boat was the murder weapon. Had it been on a highway, the weapon might have been a car."

B'ham - Bloomfield Area Primary Results (Incomplete Returns)

	B'ham	B'ham Hills	B'ham Twp.	W. B'ham Twp.	S'ham City	S'ham Twp.	Troy	District Total	County Total	State Total
National										
U. S. SENATOR										
Republican:										
Peterson	2,352	304	2,619	707	1,137	1,182	796		22,368	203,256
O'Neil	1,283	164	1,517	701	1,014	844	492		18,416	177,614
Meany	678	75	661	387	531	299	273		10,814	140,563
Democrat:										
Hart	485	45	406	682	1,980	271	845		32,374	469,030
CONGRESSMAN, 18TH DISTRICT										
Republican:										
Broomfield	4,399	554	4,819		2,646	2,364	1,575		86,832	
Mott	259	30	302		288	160	87		2,678	
Democrat:										
Sierawski	418	39	360		1,604	236	727		17,770	
CONGRESSMAN, 19TH DISTRICT										
Republican:										
Kuhn				822					8,136	4,854
Dickerson				739					6,857	3,959
Brashear				315					2,181	1,231
Democrat:										
Farnum				277					4,966	3,202
Rabaut				267					1,598	968
Burke				163					3,770	2,459
State										
GOVERNOR										
Republican:										
Higgins	291	36	385	180	335	144	189		7,465	75,296
Romney	4,486	575	4,897	1,559	2,897	2,495	1,618		52,585	541,287
Democrat:										
Staebler	472	43	393	679	1,963	265	860		32,151	485,707
STATE SENATOR, 14TH DISTRICT										
Republican:										
Chandler				509					2,255	
Kern				609					1,712	
Prescott				262					1,774	
Wagenschutz				78					563	
Westlund				309					1,357	
Democrat:										
Mullaney				145					845	
Vallier				183					628	
McCarthy				316					1,860	
STATE SENATOR, 15TH DISTRICT										
Republican:										
Kuhn					621				4,447	
Maxwell					311				1,683	
Rowley					1,210				2,430	
Varani					514				1,146	
Bullard					348				2,346	
Democrat:										
Levin					1,280				9,027	
Niparko					220				3,200	
Nolan					423				2,832	
STATE SENATOR, 16TH DISTRICT										
Republican:										
Donaldson	1,594	310	1,796			1,167	278		8,923	
Franklin	291	28	332			231	119		2,234	
Huber	1,610	310	2,014			692	969		9,201	
Patnales	515	39	723			314	383		6,521	
Democrat:										
Oberholzer	418	36	343			225	696		6,718	
STATE REPRESENTATIVE, 63RD DISTRICT										
Republican:										
Carey							823			
Foster							193			
Democrat:										
Slingerland							281			
STATE REPRESENTATIVE, 64TH DISTRICT										
Republican:										
Baillo				709	40					
Baker				197	583					
Howell				544	512					
Schink				287	29					
Democrat:										
Bain				432	407					
LaBelle				195	172					
STATE REPRESENTATIVE, 65TH DISTRICT										
Republican:										
Brown	706	225	862				501		2,418	
Brownfield	922	106	1,031				427		2,793	
Hampton	2,479	286	2,475			1,134			6,652	
Hassell	446	49	746				477		1,886	
Democrat:										
Nigg	384	38	338				214		1,347	
STATE REPRESENTATIVE, 66TH DISTRICT										
Republican:										
Maly							204		1,145	
Strauss							383		1,638	
Democrat:										
Huffman							278		2,913	
Lees							53		172	
O'Brien							184		2,170	
Thrasher							34		162	
COURT OF APPEALS, SECOND DISTRICT										
Nonpartisan										
Carroll	761	129	807	245	468	402	354		8,299	
Freeman	691	105	617	283	807	330	254		11,044	
Hanna	615	72	422	211	423	168	309		6,243	
Kavanagh	1,157	157	900	421	1,210	769	546		19,324	
McDonald	433	81	388	224	425	292	253		7,167	
McGregor	976	157	872	291	515	440	493		11,120	
Murphy	437	46	432	206	643	240	304		11,433	
O'Brien	509	39	468	233	781	311	351		13,471	
Platts	359	20	282	109	340	193	125		6,765	
Quinn	1,224	176	1,246	337	592	694	253		12,154	
Roberts	2,512	263	1,995	846	1,210	1,223	706		22,705	
Ross	322	18	299	130	600	229	75		6,294	
Sargent	337	26	299	167	632	219	177		7,127	
Taft	462	44	428	230	504	267	166		7,239	