

Box Hills IN BLOOMFIELD

... An outstanding community of new homes from \$27,500. Complete recreational facilities, including a community house and the area's only year 'round swimming pool.

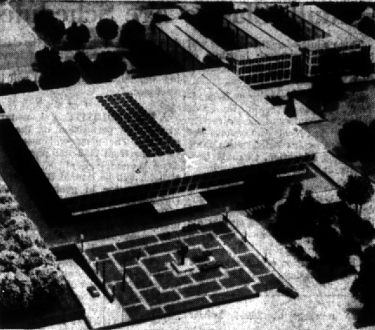
OPYDKE ROAD—JUST NORTH OF SQUARE
LAKE ROAD • BLOOMFIELD HILLS • MI 48304

THE B'HAM ECCENTRIC Page
August 27, 1964 5-D

Committee Meets At Coffee Hour to Discuss Premiere

Rallying to insure a successful benefit premiere of "My Fair Lady," nearly 100 members of the Founders' Society, Detroit Institute of Arts activities committee and volunteer committee are expected to attend a Coffee Hour briefing Monday in the museum's Kresge Court.

Committee members will go into action with an intensive telephone campaign, to encourage early ticket sales for the Oct. 28 first-night showing of the film in Michigan, at the United Artists Theatre, Detroit. Birmingham-Bloomfield area women are among the Founders' Society members participating.



Expanding the Campus

In foreground of table-top model showing proposed campus expansion at General Motors Institute, Flint, is new four-level Student Activities and Conference Building. To the right is model of new Men's Residence Hall, first dormitory to be built at GMI. Landscaping and red brick patios will surround the buildings which are initial steps in a long-range campus development program. Tarapata-MacMahon Associates, Inc., Bloomfield Hills, is architect for the plan and these buildings.

BRIDGE in BIRMINGHAM

BY BUD MAYBAUM
Southern Michigan Bridge Ass'n
While away to the national bridge tournament, bridge continued as usual in Birmingham. I found that all the exciting hands were not played at Toronto, as my hand for today explains.
This hand for today was played by the pair who win as often as any other pair in Birmingham competition. Ed Clarke was playing North and knew he had a partner he could depend upon, in Bud Whiteman, so he went all out for this slam.

Dealer: South. Both vulnerable:
NORTH (Ed Clarke)
♦ K Q 5
♥ A K Q 10 4
♦ A 10
♠ A 10
WEST EAST
♠ A J 2 ♠ 9 3
♥ 7 5 2 ♥ 8 6
♦ Q 10 8 6 3 ♦ 9 5 4 2
♣ 8 ♣ K Q J 7 2
(Dealer) SOUTH (Bud Whiteman)
♦ 10 8 7 6 4
♥ 9 3
♠ J
♣ 9 6 5 4 3

The bidding:
SOUTH WEST NORTH EAST
pass pass 3 NT pass
4 ♠ pass 6 ♠ all pass
Opening lead: 6 ♠
When Bud made the four-spade bid, Ed knew it must be at least a five-card suit and that his partner did not need points to make the slam but just distribution, and that he had.

In the actual play of the hand, West opened the six of diamonds, and Bud took no chances and won in the dummy. He used a diamond ruff and a heart ruff for the needed two entries to his hand and to set up the fifth heart, and he made the contract easily.
Even a singleton club lead cannot defeat this contract. Ed's daring and confidence in his partner made this top board possible.

Kay Clinton asked me to announce that she will reopen the Bridge tournaments at the Birmingham Community House Monday, Sept. 14, and that her first master-point tournament will be the Sept. 21.

HILDA MURPHY asked me to announce that her Thursday evening game that she switched to Monday evening for July and August will revert to Thursday evening at the Birmingham YMCA commencing Sept. 3 and that her first master-point game of September will be the 10th.

Recent winners at Birmingham tournaments include Pat and Herb Beyer, Dottie and Harold Sandelman, Margaret and Robert Lockwood, Dick McCarus and Dr. Charles Patrick, Donna Zogrodsky and Ralph Tyson, Dorothy Kelly and Ruth Guild, Ollie Swarzewald and Greta Shepherd, Dr. Harold Barron and Ed Clarke, Cipa and Dr. Gerry Walker, Hank Georgia and John Noreen.

John Sheves and Chuck Taylor, Arlene and Dr. Carl Bolton, Jane and Ken Cook, A. A. Peterson and N. A. Noyes, Judy Donaldson and Edna Canfield, Hilda Murphy and Duffy Pew, E. A. Savage and F. A. Wickham, Molly and Bruce Corvill, Adele Todd and Peg Swanson, Ann Haskin and Stan Kauftian, Clarence and Bud Maybaum and Sally Simmons and Claude Bennett.

YOU STILL HAVE time to make the Pittsburgh regional (red-point) tournament over the Labor Day week end.

Southern Michigan Bridge Association will hold its Pontiac sectional tournament at the Army, starting Sept. 24. Woman's and men's team of four will be the evening of the 24th; on Friday will be the individual in the afternoon and the mixed pair and limited mixed pair at night; Saturday will be the two-session open pair, the novice pair, the limited pair and president's pair; Sunday will be the men's pair and woman's pair in the afternoon and team of four in the evening.

We will again have a cocktail party Thursday and Friday, dinner between sessions Saturday and continental breakfast Sunday. No charge for these parties.

Music on the Isle

The Detroit Symphony Orchestra will continue to play orchestral programs this week at the Jerome H. Remick Memorial Shell on Belle Isle. Valter Poole will conduct the concert tonight and Sunday evening at 8:15.

IMMEDIATE OCCUPANCY

FAMILY OF
COLONIES

7 1/2 Gaslight
Town

Choose from One of Our 3 or 4 Bedroom Models - Bring Your Own Plans.

These Homes are in Birmingham School District, Have Built-ins, Gas Heat, Sewers, City Water, Fireplace, 2 Car Attached Garage and Basements.

The "AUTOCRAT"
3 bedrooms • 2 1/2 baths • beautiful family room • owner's sleeping apartment with private dressing room and bath.


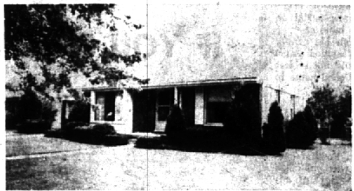

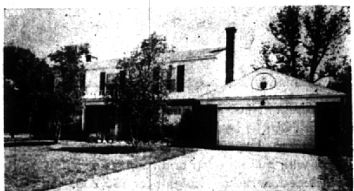

Model: MI 7-1644

Models Open Daily 1 to 8 p.m.

BENECKE and KRUE
DETROIT • DI 2-5920

Chamberlain

GROWING... GROWING... GROWING

INDEED A PLEASURE TO OFFER THIS ARCHITECTURAL MASTERPIECE. Foyer entrance to spacious liv. rm. with natural fireplace. Sep. breakfast rm. lrg. kit. Open beamed rec. rm. with exquisite paneling and fireplace. Private Patio. 5 bedrms. Circle drive. \$34,900.

CHOICE RESIDENTIAL AREA—and large treed lot make this home a great buy at \$18,900. Pleasant liv. rm. with bay window and fireplace. Jalousie windowed back porch. Walk-in closets. Fenced back yard. Basement.

IDEAL COUNTRY LIVING in this Old English Colonial on a quiet wooded lane. Handsome liv. and din. rm. Sep. breakfast nook and lrg. kit. 4 twin sized bedrms. Paneled-tiled rec. rm. Porch and Patio in rear. Here's peace and privacy plus value. \$41,900.

MODEL HOME—Professionally decorated and landscaped. Beamed ceiling in liv. rm. Superb modern kitchen. Draperies and carpeting included. Lrg. closets. 4 bedrms. Dressing rm. and bath off master suite. Intercom with AM-FM radio. \$38,500.


COZY AND "INTOWN" CAPE COD—In excellent condition. Features include: Screened and glassed patio. Center foyer, 3 bedrms., 2 baths, full basement with bath, landscaped yard, kit. with eating space, double garage. Fireplace in liv. rm. \$29,500.

Chamberlain Co.

Realtors

975 S. Hunter Blvd., Birmingham, Mich. MI 6-6000
31500 Northwestern Hwy., Farmington, Mich. MA 6-9100

KIRKWOOD ... IN BLOOMFIELD



the MONTEREY . . . Immediate Occupancy

Beautiful lakeside site with a view of the water from the living room. Four bedrooms (including owner's suite), study, large basement, huge family room, 2 1/2 baths. Walled front courtyard—a unique touch! Priced at \$44,900.

Homes from \$32,950 including base price lot

HOURS: 11 a. m. to 8 p. m. daily and Sunday, 11 a. m. to 6 p. m. Saturdays. Closed Thursdays.

Serving the People of Michigan Since 1924

THOMPSON-BROWN Company

The Best Choice For Buyers of Better Homes
19426 GRAND RIVER Model: MA 6-7522

Office: KE 1-8700


Whitehall

City of Bloomfield Hills

New subdivision of custom designed built homes in this prestige area. Many models to choose from; open daily except Thursday.



E. Long Lake Rd., 1 Mile E. of Woodward—Adjacent to the "Bloomfield Open Hunt Club"



Designed for Happy Living

You'll enjoy every minute in the attractive living room with its large picture windows bringing the outdoors in, as well as the splendid views of the stream running across the rear of the property with its many trees, and of the Birmingham golf course. There is an activities room on the second floor and a paneled recreation room in the basement. The good sized kitchen, with separate breakfast room, is ideal. All four bedrooms are large and airy. There are two full baths plus a lavatory. The enclosed breezeway leads to a two car attached garage.

For full particulars and appointment, call

Walsh, James & Wasey Co.

Realtors Since 1918

431 S. Woodward Ave. Birmingham
Midwest 4-6500
Detroit, JO 4-6033