

# Collegians 'On Their Own,' U-M Rules Kept at Minimum

Believing that college-age students are capable of managing their own affairs, the University of Michigan attempts to keep rules and regulations to a minimum. Most regulations are handled within the various housing units as it is there that the students will experience the largest change from living at home.

All male students are required to live in university dormitories for their first two semesters on campus. After this they are allowed to continue living there or are free to move into fraternities or apartments. There is no specified hour or curfew for male students living in university housing.

**WOMEN STUDENTS** must live in university sponsored housing (dorms or sororities) for their first three years, but they can live there for the entire four years if they so choose.

Women have specified hours before which they must be in the dormitory. The hours vary according to class standing and will be liberalized beginning this fall.

Freshmen women have a mid-night curfew on all nights between Sunday and Thursday. Friday nights they must be in by 1 a.m., and Saturday evening the late permission is extended to 1:30 a.m.

These hours apply not only to freshmen but to all women except those with senior standing or those who are over 21 years of age.

**SENIORS AND** women over 21 have no hours if they live in university housing. They are free in their last year, if they desire, to live in off-campus housing or apartments, allowing a maximum of freedom in recognition of the maturity the university feels a girl has achieved by her senior year.

All students are affected by the U-M's automobile policy. It states that "no student while in attendance at the university shall operate an automobile except — students over 21 years of age and seniors in good standing—if the automobile is properly registered."

Exceptions can be made in exceptional and extra-ordinary cases with special permission from the Office of Student Affairs. Bicycles are the favorite mode of transportation at the Ann Arbor campus.

**STUDENTS ARE** expected to conduct themselves in accordance with the rules of the university and the laws of Ann Arbor at all times, but this really is not difficult to do.

Class attendance requirements are left to the individual instructors, and there are no dress regulations within reasonable limits (bermuda shorts are considered proper in warm weather).

Fees and expenses can be pretty well estimated. Instate tuition for the students in the general literary college is \$140 per semester for freshmen and sophomores and \$155 for juniors and seniors. This fee applies to most undergraduate schools. Graduate school fees for Michigan residents total \$175 per semester. Tuition for the professional schools may vary.

**BECAUSE OF** the recent increase in dormitory expenses, the price of university housing has been slightly increased for the 1964-65 academic year. A double room, for example, costs \$900 for the year.

This includes, of course, meals and services. Estimated expenses for books and supplies will be about \$40-50 per semester including lab fees and all text books.

A student athletic coupon costs \$12, payable at the time of registration.

## Seaman Serving On Coast Guard Base

Robert M. Groat, seaman, USCG, son of Mr. and Mrs. Melvin L. Groat of 555 W. Frank St., Birmingham, is serving at the Coast Guard Base, Detroit.

The base provides supply and repair support to Coast Guard units in the Detroit area.

## Seaman Fights Fires in France

William S. Long, Jr., communications seaman, USN, son of Mr. and Mrs. William E. Long of 18840 Devonshire, Birmingham, recently aided in the fighting of a fire in Villefranche, France, while serving aboard the guided missile cruiser USS Springfield in the Mediterranean.

Springfield's crewmembers aided local firemen in fighting the blaze which threatened to engulf many of the old villas in Villefranche. The cause of the blaze is not known but its progress was aided by the explosion of a land mine thought to have been left from World War II.

Springfield is the flagship of the Commander of the Sixth Fleet in the Mediterranean.

You can get miles of driving satisfaction from a quart of water. The Institute for Safer Living recommends windshield washers as standard equipment on all cars. A water detergent additive or package solvent made especially for the purpose and properly used improves cleaning results. The latter cuts difficult-to-remove salt and other traffic films.

Pat Political Adv.

# It's Time for TEMPLIN

and Time for Top Quality Law Enforcement in Oakland!

VOTE TUESDAY, SEPT. 1  
FOR THE  
**Republican Choice for PROSECUTOR**



Robert L. Templin



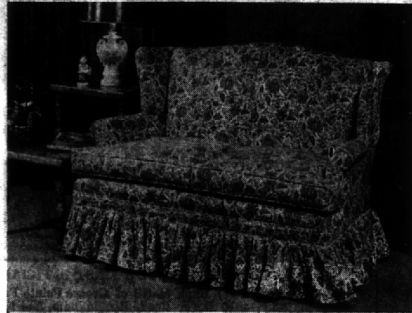
# WIGGS

annual  
**MID-SUMMER SALE**

brings you great savings on almost everything in the store!

SPECIAL ORDERS, TOO!

We'll special order any furniture item from the manufacturer at 10% less than regular price during this sale! Order now . . . and save!



ORDER A PAIR OF LOVE SEATS for only **\$200** the pair!

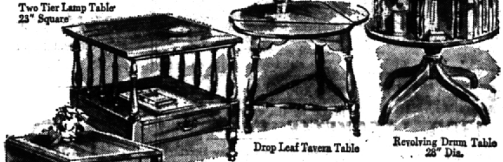
Or Buy One for \$119.75

You'll be delighted with this charming little Early American love seat . . . featuring foam cushioning that's extra soft, and quality construction that assures relaxing comfort. Choose from a wide selection of gay provincial prints!



**Ethan Allen Hand Decorated HITCHCOCK CHAIR**  
Reg. \$39.50 **\$29.95**

Charming buttonback Hitchcock chair, hand decorated on black or maple finish, with genuine handwoven rush fiber seat. A real find at this special price!



Two Tier Lamp Table 23" Square  
Drop Leaf Taverna Table  
Revolving Drum Table 28" Dia.



## Ethan Allen NUTMEG MAPLE DINING ROOM

**YOUR CHOICE:**  
42" Round Plastic-Top Extension Table and Four Comb Back Mates Chairs or 47" Buffet with Hutch Top  
Reg. \$182.50 **\$149.50**  
42" Round Wood-Top Extension Table and Four Comb Back Mates Chairs  
Reg. \$171.50 **\$139.50**



## Superbly Comfortable PATCHWORK ROCKER

SALE!  
**\$124.95**

Deep, wide, extra comfortable swivel rocker of antique maple . . . with colorful "patchwork" cover right out of grandmother's day! Foam rubber cushion, pillow back. Specially priced during our annual Mid-Summer Sale!



**Unfinished DEACON'S BENCH**  
Special!  
**\$24.95**

A full 4-feet long. Of smoothly sanded hardwood (not pine) . . . and completely assembled, ready to stain or paint. Useful in the dining room, family room, or den—and especially nice for porch or patio.



## Special Savings on CAST METAL EAGLES

Distinctive Federal Eagles of heavy cast metal, finished in antique black (some of them are in gold) . . . they're wonderful accent pieces for display on interior or exterior walls!

28" EAGLE	\$10.00
36" EAGLE	\$15.00
42" EAGLE	\$16.95

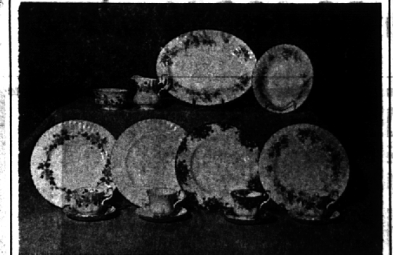
**EXTENDED PAYMENTS**

- No Down Payment Required
- Bank Rates
- Up to 24 Months to Pay

24 WEST HURON ST. ★ 4080 TELEGRAPH RD.  
In Downtown PONTIAC BLOOMFIELD HILLS  
FE 4-1234 644-7370  
Open Monday & Friday 'til 9 Open Mon., Thurs. and Fri. 'til 9

## ROYAL ALBERT

Fine Translucent  
**ENGLISH BONE CHINA**



SERVICE FOR EIGHT ON ALL PATTERNS INCLUDES 8 DINNER PLATES, 8 SALAD PLATES, 8 CUPS, 8 SAUCERS, MEDIUM PLATTER, VEGETABLE BOWL, SUGAR AND CREAMER.

Plain White With Gold or Platinum Band Service for Eight **\$79.95**

Decorated Patterns Service for Eight (Except Antoinette) **\$95 and \$100**

ANTOINETTE Service for Eight Beautiful All Gold Decoration **\$189**

Michigan's Largest Dinnerware Specialty Store  
**Pontiac Pottery**  
NORTH END OF BLOOMFIELD MIRACLE MILE SHOPPING CENTER  
ON TELEGRAPH ROAD  
Open Daily and Sunday 10 a.m. to 8 p.m.  
Telephone FE 2-8642

Pat Political Adv.

# Who is STANLEY M. BROWN?