

THE KEATING COLUMN

Sales are good! Our prospect cards show a strong demand for almost every type of home in the area. We need listings! If there is a possibility that you will sell your home in the near future, call us. A Keating sales counselor will be glad to talk it over with you. Of course, there is no obligation.

★ ★ ★ ★ ★
5-STAR SPECIAL!

\$15,900 **\$800 DOWN**



Gleaming white and spotless, this "convenience" home is right in town close to schools, shopping, transportation. We took this house in trade and must sell it immediately. Asking \$15,900 but will consider all offers. It has 3 bedrooms, full basement, General Electric gas heat, lovely screened porch. Carpeting included. Call right away on this.

WE NEED HOMES TO SELL!

BETTER THAN NEW **\$42,500**



Authentic New England luxury ranch on large beautifully landscaped lot. Three twin sized bedrooms, family room, and full basement. It's priced right at \$42,500.

WE CAN SELL YOURS!

IN THE VILLAGE



An impressive and delightful home on beautiful Cranbrook Road is this Monterey colonial. It has four bedrooms, two baths and powder room. Panelled family room and library. You can walk to shops, schools and transportation. Solid value at \$43,000.

WE CAN SELL YOURS

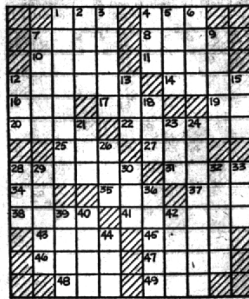


327 S. Woodward

MI 6-1234

- | | | |
|-----------------|------------------|-------------------|
| ACROSS | DOWN | 33. Cusion |
| 1. Boy | 1. Sheriff's | 24. Table- |
| 2. Part of a | 2. Wavy; Har. | 25. Guido's |
| 3. Inlet | 3. Bindure | highest |
| 4. Opera by | 4. Self | note |
| Verdi | 5. Solitary | 26. Cons |
| 11. At one time | 6. Decorative | of |
| 12. Wheelless | edging | thread |
| 13. Lamprey | 7. City; Pa. | on a |
| 14. Arab | 8. Kind of | spindle |
| mans | river mouth | 29. Of the |
| 17. Source | 12. A buddy | acc |
| of light | 13. To take | 30. Old times |
| and heat | supper | 32. Noblemen |
| 20. Reaposition | 15. Distrass | 33. Home- |
| 20. Raies | signal | owners |
| 22. Treeless | 18. A constant | plot |
| plains: | scolder | 36. One of the |
| to Am. | 21. Little child | Apostles |

Answers to
Puzzle Will
Be Found
on Page 7-D



PUZZLE NO. 821

BRIDGE

in BIRMINGHAM

By BUD MAYBAUM
Southern Michigan Bridge
Association

We all admit that luck plays a large part in the winning of hands, but maybe it could also be described as careful defense or a good defense. The hand I have for today will display just what good defense consists of.

Betty Pope, long a top bridge player in Birmingham who usually finds her name among my winners each week, led the way in the proper defense of this hand.

Both Vulnerable; Dealer: West

NORTH

♠ void
♥ 9 8 4
♦ A K 8 6 5 2
♣ A Q J 5

WEST (Betty Pope) **EAST**
♠ 10 6 2
♥ A 8 5
♦ 9 4 3
♣ 10 8 6 4

SOUTH

♠ K Q 9 8 7 4 3
♥ 7 2
♦ K 9 2
♣ 10

The bidding:
WEST NORTH EAST SOUTH
pass 1 ♠ 1 ♥ 3 ♣

all pass

Opening lead: A ♠

Betty opened the ace of her partner's suit and continued the heart suit. After winning the second heart, East played the third round that was ruffed by declarer. The best declarer could do was to play the king of trumps which was covered by East's ace, and still another heart was led by East. South did trump, and Betty was able to overtrump. Declarer now had to drop another trick in trump for down one.

THE ELEMENT of luck came in, when I was the declarer and jumped to four spades and not three. West opened the ace of hearts, but when his partner followed with the three—felt that his partner later might be end played in clubs—shifted to a club.

I was able to win this trick with the ace and discard a heart on the king of diamonds, now led the king of trumps and drop two trump tricks and one heart, and make this unmakeable contract.

My luck was that I didn't have Betty Pope and her partner as the defenders on this hand. It is many hands like this that makes Betty a usual winner.

Some of the Birmingham players whose names I omitted last week from the winners at Toronto in the summer nationals were Gene Grubin, Lester Jones, Marge and Paul Potter, Dick Becker, Mary Steele, Lynne and Walter Goldsmith, George Alderton III, Janet and Morris Berman, Helen and Morris Wells, Fran and Stan Wendley, Niobe W. Gates and Florence Fisher and Helen N. Campbell, formerly of Birmingham and now residing in Florida.

RECENT WINNERS in Birmingham tournaments include Madeline White and Frank Lucy, Betty Pope and Lillie Brooks, Hille Murphy and Duffy Pew, Tom Batten and Walter Lauchner, Arlene and Burt Heck, Mae Campbell and Adelle Todd, Steve Taylor and R.A. Scott, Clarence and Bud Maybaum, May Esch and Duffy Pew, Grava Howard and Ruth Guild, Maggie Gould and Bonnie Gould, Ken Wommsell and Ken Cook, Sandy Stevenson and A. A. Wagner, Judy and Dave

Buskirk and Edwin V. Clarke and Bud Whiteman.

It is not too early to start making partnerships for the men's or the woman's team of four or the open team of four at the Southern Michigan Bridge Association sectional tournament at Pontiac starting Sept. 24.

We will also have the individual, men's and woman's pair event, open pair and novice pairs, as well as the mixed pairs.

Don't forget that this is the week end of the Greenbush sectional and Cleveland sectional. Labor Day weekend is the regional at Pittsburgh.

Belle Isle Is Scene For Free Concerts

The Detroit Symphony Orchestra opened a three-week series of nine free concerts Tuesday at 8:15 p.m. in the Jerome H. Remick Memorial Shell on Belle Isle. Valter Poole will conduct all of the concerts.

The opening program featured Marion Wright, soprano, who is the winner of the 1964 Belle Isle auditions conducted by the Parks and Recreation Department. The final concert at Belle Isle will be Sept. 6.



APARTMENTS

Three apartments available for immediate occupancy. Reservations now being accepted for October in final session.

(Hotspot Appliances)

FOX-CROFT APARTMENTS

In Woodmontfield
Maple and Telegraph
Phone 1-40 6-629

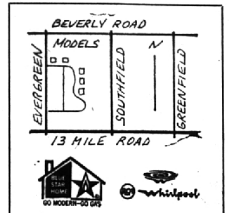


WESTWOOD ESTATES

IN THE CONVENIENT COMMUNITY OF BEVERLY HILLS

Ranches, Colonials & Split-levels
\$31,900 to \$37,900

Westwood Estates is the ideal family location, close to schools, churches, shopping, etc. Several homes ready for immediate occupancy—others under construction. Lots available to duplicate any of our numerous designs.



COLEMAN & MOSS
MODEL 646-2586

BUILDERS AND DEVELOPERS OF DISTINCTIVE SUBDIVISIONS
OFFICE 543-1812

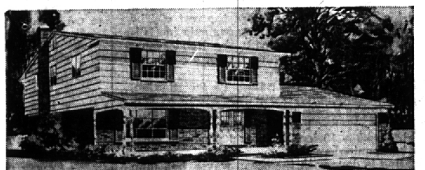


Birmingham Schools

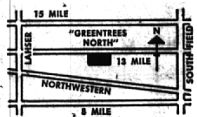
in "GREENTREES NORTH"

Consider the advantages of this area of fine homes:

- Birmingham schools
- Minutes from Birmingham and Northland Shopping Centers
- In Suburban North Woodward
- Easy access to Southfield and John C. Lodge Freeways
- Parochial Schools and Churches nearby
- City water and sewers
- Choose from Colonials, Tri-Levels and Ranches
- Homes have family rooms, natural fireplaces, 2-car attached garages, dishwashers and other features



The Camden, one of five models, is a four-bedroom Colonial with 2 1/2 baths, 2-car attached garage, separate dining room, family room with natural fireplace . . . storms and screens, built-in Hotpoint dishwasher, oven and range and dozens of other features . . . 2031 Sq. Ft. of living area plus full basement. Its price is \$29,900.00. Other models are priced from \$27,500.00. All prices include 75 foot site.



MARK BUILDERS, inc.
10822 WEST MICHIGANS ROAD • DETROIT, MICHIGAN
MODEL PHONE: 646-4140 • OFFICE: 811-0880

WE NEED LISTINGS!
LIST, BUY, SELL OR TRADE



Midwest 7-0963 - Jordan 4-5184

RESIDENTIAL AND COMMERCIAL REAL ESTATE 295 N. HUNTER BLVD.