

Korean Assignment Awaits Soldier

Army Specialist Four Floyd S. Kannell, 21, whose wife, Claudia, lives at 1226 Smith, Birmingham, was assigned to the 1st Cavalry Division in Korea, July 27. Specialist Kannell is a member of Company B, 1st Battalion of the division's 12th Cavalry.

4-H Fair Continues

The Oakland County 4-H Fair is being held through Saturday at the corner of Perry St. and Walton in Pontiac. Hours are 7:30 a.m. to 8 p.m. today and 7:30 a.m. to 7:30 p.m. Friday and Saturday.

Letter

(Continued from 1-D)

ter, the more expensive and the more sought after. They are not allowed to be seen on the streets. During a public gathering (for instance to hear the Sudans) they all stand together but separated from the men. They usually stay at home. Home means a round clay or straw hut, community walls and goats or donkeys. A bicycle (or horse for the farmer) is a sign of prestige. Only government employees drive expensive private cars—Mercedes and "American Street-Cruisers." Europeans drive their Volkswagens, English Fords, etc.

THE MAJORITY are Moslems and are very religious . . . they pray mornings and evenings (as every Christian should) but the discipline demands still more—no alcohol, no cigarettes—women at random. Cola nuts are munched like chewing gum.

It will be interesting at the next census to find out whether human beings or goats and donkeys will be in the majority. You always have to drive with one foot on the brake. They jump into the street unexpectedly.

The donkeys live up to their reputation. You can blow your horn, scream or speed past them within a fraction of an inch without phasing them. They are moxy, stubborn than the "Hessen" (mules).

TRAFFIC IS bedlam—everyone for himself. Full speed ahead and lay on your horn (nothing new).

The streets have an exact "Go-go" width, with traffic moving on the left side. For two-way traffic the right side of the car stays 2 inches on the pavement (if available), and the left side runs on gravel, sand, clay, stones or whatever happened to be there during the road construction. You close your eyes and hope no concrete pillars or abutments appear at the "bridges."

Truck drivers disregard private cars. The Sokoto Market is fascinating, where you can buy practically everything. The tailors expect a certain amount of bribe for their efforts. Business is terrific. The hum day and night. Beef and veal are butchered daily. Chickens are brought to the door and killed an hour before mealtime. Only the spoiled ones have stoves. The natives fry everything over an open fire.

YOU CAN BUY hats of all kinds, but none of them fit. They are designed to be worn on top

of a turban. Everything is dyed either black, red, blue or green. Clothes are torn. Only shirts and shoes in appropriate sizes can be found in the stores. We occasionally get grapefruits, oranges and lemons from the plantation eight miles away. For this purpose we use "Rover" with Alrad drive to cross the stream.

Potatoes, carrots, onions, rice, tomatoes, red peppers, corn and peanuts are readily available. Corn flakes and milk are harder to come by. We should check the formula of the eggs. The shells are from 1/32" to almost 3/32" thick, and the white inner skin is like leather.

You can drive a nail in a board with them (but they taste good).

Bargains galore in Want Ads.

Oxford Garden Club Holds Annual Event

The Oxford Garden Club will hold its 30th annual flower and vegetable show Aug. 22 and 23 in the Daniel Oxford School in Oxford.

Hours are 9 to 10 p.m. Saturday, Aug. 22, and 12 noon to 7 p.m. Sunday, Aug. 23. Admission is free.

The Gay Midway will be bigger and more fun than ever at this year's Michigan State Fair, Aug. 28 through Sept. 7.



... An outstanding community of new homes from \$27,500. Complete recreational facilities, including a community house and the area's only year 'round swimming pool.

OPDYKE ROAD—JUST NORTH OF SQUARE LAKE ROAD • BLOOMFIELD HILLS • MI 8-8444

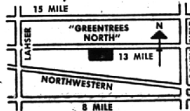
Birmingham Schools in "GREENTREES NORTH"

Consider the advantages of this area of fine homes:

- Birmingham schools
- Minutes from Birmingham and Northland Shopping Centers
- In Suburban North Woodward
- Easy access to Southfield and John C. Lodge Freeways
- Parochial Schools and Churches nearby
- City water and sewers
- Choose from Colonials, Tri-Levels and Ranches
- Homes have family rooms, natural fireplaces, 2-car attached garages, dishwashers and other features



The Camden, one of five models, is a four-bedroom Colonial with 2½ baths, 2-car attached garage, separate dining room, family room with natural fireplace . . . storms and screens, built-in Hotpoint dishwasher, oven and range and dozens of other features . . . 2031 Sq. Ft. of living area plus full basement. Its price is \$29,900.00. Other models are priced from \$27,500.00. All prices include 75 foot site.



OPEN Daily and Sunday 1-9 p.m. Saturday 1-6 p.m.



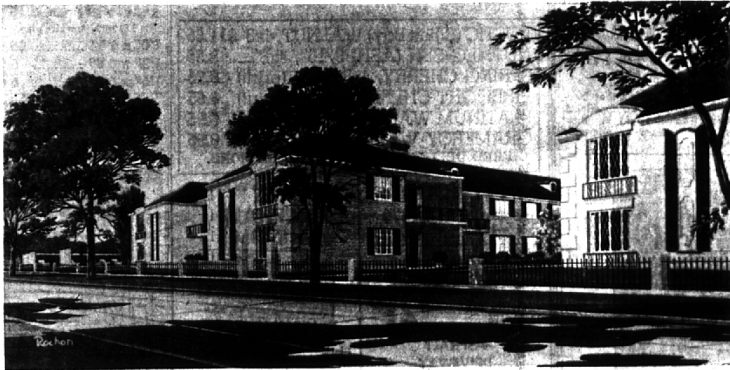
MARK BUILDERS, inc.

10222 WEST MICHIGAN ROAD • DETROIT, MICHIGAN
MODEL PHONE 644-4140 • OFFICE: 61-0820

We Would Like To Say A Big **THANK YOU!**
To The Residents Of The Birmingham-Bloomfield Area
For The Fine Acceptance Of Our

Burlington Arms apartments

1111 N. Woodward, Birmingham



In A Few Short Months, You Have Leased Almost All Of Our Fine Apartments.

We Want Everyone To Know That We Like Being in Birmingham And We Are Happy To Know That You Agree That Burlington Arms Is The Finest Apartment Complex In Metropolitan Detroit.

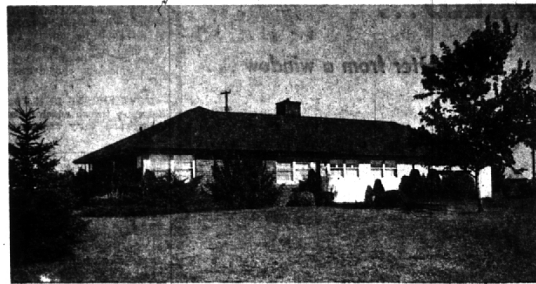
AGAIN WE SAY: THANK YOU!

Just in case you haven't seen them yet, our model will be open for a little longer as we have just a few apartments left.

Model Open Daily 1-5 P.M., Sundays 2-5 P.M. 646-7538 Model Phone
Resident Mgr., Mrs. G. J. Callam, 647-1508

Burlington Arms Apartments feature all-electric built-in G.E. kitchens; each apartment has its private patio or balcony; all are air-conditioned, have huge rooms, built-in hi-fi; 2 baths, walk-in closets, dressing areas prevail; covered parking is nearby; every feature is superlative.

For further information, KE 5-6200 or write Paul H. Johnson, Inc., 19600 W. McNichols for illustrated brochure



A quiet court overlooking a sparkling pond and a charming small house with big, bright and cheerful rooms. Living room 27x13.6, kitchen 17x14, three sizeable bedrooms, 26x10 utility room, 2 car attached garage. An added bonus - Wing Lake Privileged! \$25,900.



Walking distance to Quanton school and a house that is full of surprises. FOUR bedrooms, 2½ baths, living room with deep bay window, separate dining room, wonderful paneled family room with fireplace, work-easy kitchen with bay windowed breakfast area, huge rec. room. Comfortable one floor living in a top location. \$37,900.



Beyond the trees is Walnut Lake (162 feet of frontage) The house is glamorous, intriguingly unconventional and exciting. A master suite with separate dressing room and a luxurious Roman bath - four other bedrooms and three baths - Studio living room with glass wall overlooking the lake - a superlative kitchen with all built-ins - slate floored dining room, dramatic foyer. A separate barn used as a playhouse. A most unusual house in a secluded setting.



An enchanting Contemporary in a gorgeous setting that fits the house like a glove. Appealingly different in plan with gracious open foyer, studio ceiling and paneled family room; deep-windowed living room, step-down circular dining room; master suite with dressing room and study (or fourth bedroom); two other large bedrooms with connecting bath on the lower level. Three car garage, huge walled patio on the lower level and a second patio off the family room on the upper level. Near the Hunt Club in Bloomfield Hills.

MAX BROOCK INC.

1895 - 1964

300 S. Woodward

Open daily 9-8
Saturday 9-5



MI 4-6700

JO 4-6700

