

If you are a discriminating shopper, you'll find it pays to read the classified pages of The Eccentric today and every week. Read and advertise in the Classified pages. Call MI 4-1100.

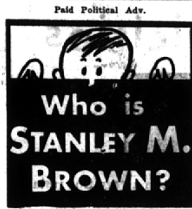
Marine Graduates From Platoon Class

John T. Delaney, son of Mr. and Mrs. John T. Delaney of 3677 Meadowbrook Way, Lathrup Village, recently graduated from Senior Platoon Leaders Class at the Marine Corps School, Quantico, Va.

During the six-week course, he received training in leadership, physical fitness, and other military subjects designed to prepare him for a commission in the Marine Corps.

He also completed the six-week Junior Platoon Leaders Class. Upon graduation from college, he will be commissioned a second lieutenant in the Marine Corps Reserve.

Paid Political Adv.



Who is STANLEY M. BROWN?

Al's Overhead Garage Door SALES AND SERVICE

FREE ESTIMATES
WE INSTALL AND REPAIR

- 24 Hour Service
- Very Serviceable Prices

MI 6-8917
2020 WEST BIG BEAVER
Troy, Michigan



Al Hale

Up-to-the-minute STOCK MARKET RESULTS!

During the current Detroit Newspaper strike—or anytime—call Watling, Lerchen & Co., MI. 6-9100, for latest information from Wall Street.

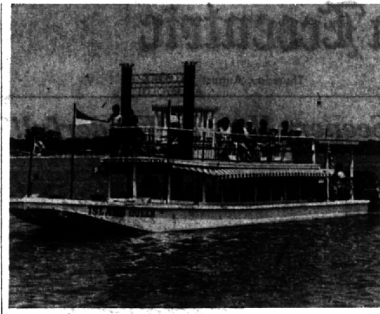
Watling, Lerchen & Co.
Members New York Stock Exchange
Creson Bldg., W. Maple and Cranbrook Rd.
Birmingham, Michigan

Young People Qualify Quickly For a Good Job

By Attending **Business School**

The time of decision about your future is NOW. Don't let important weeks go by while you drift or hesitate on what to do. Here is a proven path to BETTER TOMORROWS. You can join other young men and women who wish to qualify for rewarding careers and who want direct, practical training within their means. Intensive courses shorten—speed your way — Phone or write through your way, 1964-65 schooling and catalog which describe all on to a BET-TER JOB.

DETROIT BUSINESS INSTITUTE
Michigan Theater Bldg. Phone WO 2-6534
216 Bagley Ave.

REPLICA OF AN OLD MISSISSIPPI RIVERBOAT
Over 180,000 persons have boarded the "Island Queen" since 1956.

'Island Queen' Gets Repairs for Safety

So far this season over 12,000 persons have taken a water cruise aboard the "Island Queen" excursion boat which daily makes 45-minute tours around Kent Lake in Kensington Metropolitan Park, southeast of Brighton.

However, a conversation with its pilots might quickly reveal that the park's carpenter crew made extensive repairs on this craft prior to its launching for the 1964 season early in June.

PILOTS OF the excursion boat are Joseph Donahue, of Commerce, William Parker, of Milford, and Lewis Underhill III, of South Lyon, who must pass a rigid examination by the U.S. Coast Guard and have at least one year's experience as a boat operator on a licensed Coast Guard approved vessel.

According to John Schlitters, of the park's carpenter shop crew, the repairs were needed so that the craft would again be stamped "seaworthy" by the U.S. Coast Guard. Repairs included replacement of bow decking, scrapping the hull inside and below the water line and adding rust-proofing, replacing the upper deck, providing six air vents for ventilation and safety, adding new hand rails to top and upper deck, repainting interior and exterior, repairing several seats of the 60 passenger craft and stripping and reassembling the cabin house and artificial smoke stacks.

THE 27-HORSEPOWER diesel engine was completely overhauled

Residents Attend School in Maine For Summer Classes

Half-way through the University of Maine summer session, approximately 3,500 students have registered for classes in the first two three-week sessions and the six-week-session.

The University Summer Session has grown in the past few years from one six-week session in mid-summer to a continuing series of sessions which extend the school year to a year-round operation. The 3,500 total will be increased when students register for the final three-week session on August 17.

Teachers or students who have enrolled for initial sessions at the Orono campus from Birmingham are Margaret A. Crawford, E. Southfield School; James D. Smith; Virginia R. Smith, Beverly School; and Edith L. Blake, Southfield Public Schools.

County Dems Schedule Fall Parley

Oakland County Democrats will hold their fall county convention on Saturday, Sept. 12. County Chairman Sander M. Levin announced today.

The convention is scheduled for 7 p.m. at the Community Activities Building on Williams Lake Road in

Waterford Township. The county's 389 Democratic precinct delegates will elect 184 delegates to the state convention in Lansing Sept. 18. The state convention will nominate candidates for the offices of lieutenant governor, secretary of state, attorney

general, state board of education and college boards.

KEY STATE party officials and candidates for public office are expected to attend the county convention.

The county party's annual fund-

raising Jamboree will be held immediately following the convention in the same building at 9 p.m.

If you are one of the estimated five million Americans with high blood pressure, your physician can help you keep it under control, and perhaps a void serious consequences, the Michigan Heart Association says.



FASTEN SEAT BELTS!



BUT WE'RE ONLY GOING A FEW MILES.



REMEMBER—MOST ACCIDENTS HAPPEN CLOSE TO HOME.



SAFE AND DEFENSIVE DRIVING PREVENTS ACCIDENTS—GIVES US A GOOD DRIVER DISCOUNT AT MICHIGAN MUTUAL.

How's your driving record? If it's good—if you're a safe driver—Michigan Mutual Liability will be happy to consider you for a special Good Driver Discount rate on auto insurance. Get full facts, rates—by phone.

SECURE THE FUTURE... INSURE WITH MICHIGAN MUTUAL

1600 NORTH WOODWARD AVENUE
PHONE 647-3700

MICHIGAN MUTUAL Liability Company **INSURANCE**
MUTUAL BUILDING • DETROIT 26 • FOUNDED 1912
Casualty and Fire Insurance For Car, Home and Business



WITBECK HAS 150

G.E. Personal Portable T.V.'s

LOW, LOW, LIQUIDATING PRICES!

All G.E. Personal PORTABLES at LIQUIDATING PRICES!

ULTRA-COLOR TELEVISION

All G.E. Personal PORTABLES at LIQUIDATING PRICES!



LIFETIME CIRCUIT BOARD GUARANTEE TV

- ★ Black, Ebony Finish!
- ★ Chrome Metallic Grill!
- ★ Ear Phone Jack and Ear Phones!

WITBECK

HOUSEHOLD APPLIANCES
23365 Woodward Ave., Corner of Woodland, Ferndale
545-2600 545-2601

• NO PHONE ORDERS ACCEPTED •

Six Blocks North of Nine Mile Road

OPEN Thursday and Friday 'til 9

it's barbecue time . . .

go Krogering

NOW OPEN
W. Maple at Lahser
Birmingham