

Apartment Project Opening Soon in Area

Individuality is the theme for the new apartment development near the southeast corner of Maple and Telegraph.

Country Club Manor, developed jointly by John Livermore, Allan Waller and Creative Capital of Michigan, Inc., a small business investment company based in Birmingham, is an attempt to give apartment dwellers the advantages of a private home without the cares of ownership.

The 44-UNIT development is composed of 5 buildings, spread over a rolling 6 acres. In most buildings there are only two apartments per entrance hall.

Of contemporary architecture, it features all of the modern conveniences found in an individual home,

including the first natural gas-powered central air conditioning system in this area.

Each of the one or two-bedroom units has either a private balcony or patio, giving the tenant an outdoor living concept not normally found in multiple housing.

The OUTDOOR living concept is completed by a swimming pool nestled at the bottom of the southern slope.

Marilyn Cochran, resident manager, said the rentals range from \$196 for a one-bedroom to \$325 for the largest two-bedroom units.

While some of the units are completed and presently leased, the developers indicated that the project will not be fully completed till Oct. 1.



MULTIPLE HOUSING GROWS IN TOWNSHIP
Advantages of individual home, minus owner's worries.

Candy Man Acclaimed Ambassador

Clifton J. Ferguson, 3454 Blossom Lane, Bloomfield Hills, a manufacturers' representative of the confectionery industry, was honored Monday during the annual convention of the National Candy Wholesalers Association.

He was one of 27 candy salesmen selected from several thousand throughout the U.S. to be designated as a "Candy Ambassador" in recognition of his service to the industry, which he has served for the past 27 years.

FERGUSON is president of Dehm and Company, a Detroit confectionery brokerage firm.

Approximately 4,000 candy men from all over the United States and several foreign countries were present in Washington for the meeting, held at the Sheraton-Park Hotel, Sunday through Tuesday.



Assumes New Post

George L. Huffman, 7208 Meadowlake Road, Birmingham, has been elected vice president of Ex-Cello-O's Packaging Equipment Group. Huffman will be responsible for overall management of the packaging group, which includes the Pure-Pak Division, manufacturing dairy packaging and related equipment and the Staudt Division, manufacturing a line of folding box equipment.

NEWS OF BUSINESS

Profit-Center Project Includes B'ham Man

American Motors Corp. July 31 announced its Appliance Division is being reconstituted as a fully-integrated profit-center, as part of a new program to expand the major segment of the company's business.

President Roy Abernethy, 3640 Oakland Drive, Bloomfield Township, said the move continues American Motors efforts to capitalize on the corporation's growth to a billion-dollar-a-year sales level and to permit maximum fulfillment of future plans.

John C. Secrest, 30570 Lee-mor, Birmingham, vice-president in charge of purchasing for the corporation, has been appointed vice president and general manager of the newly-integrated division and a member of the corporate policy committee.

Secrest will assume his new position following the retirement of John W. Raisbeck, vice president-appliances.

Under Secrest, functions formerly under corporate staff direction which are essential to operation under the "profit center" concept will be added to the domestic manufacturing and distribution functions presently conducted by the Appliance Division.

The APPLIANCE Division of American Motors Corp. manufactures a full line of major household appliances and commercial frozen food and ice cream cabinets and coolers under the Kelvinator name, refrigeration and cooking appliances under the Leonard brand name and home laundry equipment under the ABC brand.

Secrest, 42, joined American Motors in 1961 as vice president-purchasing, after 13 years with the Ford Motor Co. in various execu-

Bloomfield Man Named President Of Canadian Firm

Burroughs Corp., vice-president Ken T. Bement, 963 Puritan, Birmingham, has been elected president of Burroughs Business Machines Ltd., the corporation's Canadian subsidiary. The announcement was made in Detroit by Ray R. Eppert, 295 Lone Pine Court, Bloomfield Hills, Burroughs Corp. president.

Since 1960, Bement has been in charge of the corporation's Equipment and Systems Marketing Division, directing sales of electronic data processing systems, accounting machines and related office equipment within the U.S.

NO STRANGER to Canadian business, Bement served from 1956 to 1960 as general sales manager for the combined U.S. and Canadian marketing functions.

Burroughs Business Machines Ltd., with headquarters in Toronto, manufactures and markets a broad line of business machine products, from adding machines to computers, as well as office supplies, forms and systems paper products. It is Canada's largest producer of MCI-coded checks.



Elected VP

James M. Bridgman has been elected vice president-industrial relations, Burroughs Corp. Bridgman has been director of industrial relations since April 1963.

He lives at 1001 Michigan, Birmingham, and has held executive positions with Burroughs Corp. since joining the company's research laboratories at Paoli, Pa., in 1955.

B'ham Architects Design for WMU

O'Dell Hewlett & Luckenbach Associates, Birmingham, has been appointed architects for a new multi-million dollar building program at Western Michigan University.

Dr. James W. Miller, president of Western Michigan University, cited the rapid expansion of the university to an expected enrollment this fall of 15,500. A major \$3,000,000 classroom building and a 4,000 to 5,000 seat auditorium will be the first units to be built on approximately 300 acres west of the present campus.

IN APPOINTING O'Dell, Hewlett & Luckenbach Associates, Architects, Miller noted the experience of the firm on such projects as the Ford Auditorium in Detroit, the remodeling of Hill Auditorium at the University of Michigan and the new Howard C. Baldwin Memorial Pavilion at Oakland University, home of the Meadow Brook Music Festival.

The firm is also designing a \$2,500,000 humanities building program at Western Michigan University and many schools and institutional buildings throughout the state. Construction of the classroom building and the auditorium is expected to begin early in 1966.

Agency Honored

General Agent Donald C. Nolte, offices at 283 Daines, Birmingham, representative of the Columbus Mutual Life Insurance Company, Columbus, O. recently was given special recognition for his agency's participation in the company's president's Month sales campaign. The campaign, a traditional event held once a year in honor of the company president, took place during June.

Life Insurance Men Win in Company's Annual Sales Drive

Three area representatives of the Lincoln National Life Insurance Company have been named winners in the company's recent nationwide President's Month sales contest.

They are J. E. Tomalis, 6645 Mellow Wood Lane, Birmingham, and a member of James P. Kelem and Associates in Detroit; and G. E. Grissom, CLU, 856 Abbey, Birmingham, and Frank Antrobus, 2828 Colby, Bloomfield Hills both members of Kai Gulve & Associates in Detroit.

In recognition of their achievements in the company's annual month-long drive honoring its committee chairman for the 1965 year, personal mementos from president Henry F. Root. The contest provided Lincoln Life agents with the first opportunity to honor Root, who was elected president last March.

Local Executives Hold Top Posts

Several Birmingham-Bloomfield area businessmen have been appointed new officers, directors and committee chairmen for the 1965 year of the Detroit chapter of the Sales Promotion Executives Association.

James M. Justen, 4783 Quanton, Bloomfield Township, R. L. Polk & Company, was reappointed as second vice president.

Arthur E. Dowd, 5460 Putnam, West Bloomfield, Nemety-DeVary Company, will continue as secretary.

R. J. FLICK, 5640 Crabtree, Birmingham, American Motors Corporation, was named publicity chairman, and Floyd W. Clark, 4628 Hedgewood, Birmingham, Barton, Duxing & Osborn, Inc., is in charge of attendance.

R. J. Flick was elected to the board for a three-year term.

Doctor Gives Talk

Dr. Paul L. Conolly, 4347 Karen Lane, Bloomfield Hills, optometrist and automotive visual consultant, gave an illustrated talk on "Visual Factors in Automobile Design with Emphasis on Rear-View Mirrors" for the American Association of Motor Vehicle Administrators.

Unusual Planning Provides Jobs For Handicapped

In Southfield a unique building is going up; it will house a unique staff and an award-winning employer.

The building, located at Red River and Northwestern Highway and to be completed in November, will be the new headquarters of the Ketter Insurance Agency, now located in Detroit.

THE CONSTRUCTION is being built with handicapped employees in mind—ramps rather than steps for those in wheelchairs and single floor construction.

The Ketter Agency employs five handicapped workers among its staff of approximately 30. Theodore R. Ketter, founder and chairman of the board, and his son, Theodore R. Ketter, Jr., president, who lives at 30875 Franklin Road, Franklin, lead the agency.

Franklin Resident Promoted in Ex-Cello-O Corp.

August 6, 1964 THE BIRMINGHAM (MICH.) ECCENTRIC 3-E

Franklin Resident Promoted in Ex-Cello-O Corp.

Ralph C. Charbeneau, 25685 River Drive, Franklin, has been promoted to the post of corporate director of public relations and advertising of Ex-Cello-O Corp.

In his new post Charbeneau, who has been director of public relations and advertising of Ex-Cello-O's Packaging Equipment Group, will be responsible for the same duties for the entire corporation.

Ex-Cello-O Corp. is a major manufacturer of machine tools, precision commercial and military products for a broad range of industries; a leader in the packaging equipment industry and a manufacturer of expendable tools.

Area Man Sent To California

Howard C. Craig has become resident controller at the Los Angeles Chevrolet assembly plant.

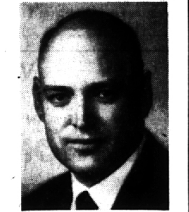
Craig started with Chevrolet in 1942 as a clerk at Flint, until named a traveling auditor in central office in 1948. He was promoted to a senior statistician in central office here in 1950 and later became general accounting supervisor at the Norwood, O., assembly plant.

IN 1954, Craig was named assistant resident controller of the Gear & Axle plant in Detroit. He became resident controller at central office here in 1959 and resident controller at the Engineering Center a year ago.

Meet ... GERALD K. WOLFROM PAUL R. JINGOZIAN • GOOD MEN TO KNOW •



PAUL R. JINGOZIAN



GERALD K. WOLFROM

A bachelor, Paul is a graduate of Michigan State, a business major. He attended Goodbody's securities training school at New York University. A baseball player, Paul interests himself in sociology and psychology in the winter and is a working student of business cycles and economic trends.

"Gerry" calls Mt. Clemens home. He spent 10 years with Chrysler after attending Michigan State and Wayne State. An Army veteran, Gerry is a life member of Delta Sigma Pi and a member of Warren Lion's Club. He attended New York University as a member of the Goodbody training school.

Goodbody & Co. IS A GOOD PLACE TO GO FOR "BROAD SPECTRUM INVESTING"

FINANCIAL LIBRARY

In a comfortable reading-room decor, our clients are furnished a wide selection of our own research and other useful financial services and publications. Available to Goodbody customers to enable them to evaluate present holdings and form a sound basis for their new investment selections.

Members NYSE

GOODBODY & CO.

ESTABLISHED 1891

118 BROWN STREET (CORNER OF PIERCE) MI7-3300 JO 4-9300

OPEN SATURDAYS FROM 9:30 AM TO 12:00 PM

OVER 75 OFFICES THROUGHOUT THE NATION

FOR LEASE

5,500 sq. ft. industrial space in new building under construction in Birmingham Airport Industrial Sub-division at Maple and Coolidge. Will finish to your specs with room for expansion. Occupancy September 1, 1964.

Simone & Co. 273-8300

NOW—Take your air-conditioned living accommodations with you when you vacation...enjoy them when you drive!

... RENT A DODGE MOTOR HOME

Your Dodge Motor Home does away with demanding schedules, looking for motels, daily packing and the wear and tear of traveling.

Up to eight people can sleep in it. Kitchen has stove (Ouller & oven) refrigerator, exhaust fan, 36 gallons of hot and cold water, kitchenware and dishes. Bath has shower, sink and incinerator toilet.

Drives as easily as a car—automatic transmission, power steering, power brakes.

PHONE LI 6-1707, FOR FULL FACTS AND RENTAL INFORMATION.

NATIONAL AUTO LEASING CORPORATION
334 Livermore • 1 Block North of 8 Mile Road • Ferndale 20, Michigan

IT'S SUMMER FIX-UP TIME

The Extra Touch

FENCING
BUILD IT YOURSELF & SAVE

BLACK TOP DRIVEWAY SEALER

CEDAR POSTS
3' - 7' — 49c
4' - 7' — 79c

CEDAR 4 x 4
25c Lin. Ft.

LOUVER

CLEAR PICKETS
3 1/2' — 19c ea.
4' — 22c ea.

PICKET

SHUTTERS
1 1/2" Priced Per Pair

14x35 - \$5.95 18x35 - \$6.30
14x47 - \$6.85 18x47 - \$7.55
14x55 - \$7.40 18x55 - \$8.45
14x59 - \$8.10 18x59 - \$8.70

Also other sizes

BASKETBALL BACKBOARD SET
\$995*

WHITE PICK BOARDS
KILN DRIED—BRIGHT

1 x 6—7c Lin. Ft.
1/2 x 6—7c Lin. Ft.
2 x 4—9 1/2c Lin. Ft.

5 gal. \$6.95 can

Durable black finish. Will not track in summer. No cracking in winter. Gas and oil resistant.

WE WILL HELP YOU DO IT YOURSELF, OR RECOMMEND A QUALIFIED CONTRACTOR

BIRMINGHAM LUMBER & SUPPLY CO.
1025 HAYNES STR. MI 4-3636

Between Adams & Hunter—3 Blocks South of Maple (East of Greenfield's)
Hours: Mon. Thru Fri. 7:30 to 5:30 P.M.—Sat. 7:30 to 4 P.M.