

# THE KEATING COLUMN

## HICKORY HEIGHTS

\$31,900



Unique isn't it? This home has a truly exceptional floor plan that flows from room to room for most delightful entertaining areas. The bedrooms are spacious. There is carpeting in the living room, dining room, and bedrooms, slate foyer, lovely family room with beautiful views, Anderson window walls, sparkling kitchen with all the built ins. Birmingham schools. An excellent value at \$31,900.

## FRANKLIN

\$33,900



The setting for this luxury rambler is a large landscaped site in an excellent neighborhood. It has three larger than normal bedrooms, kitchen with built-in General Electric oven, range, dishwasher, and planning desk. Screened porch, large family room. Birmingham and St. Regis schools. Lovely home for \$33,900.

## BIRMINGHAM WOODS

\$36,750



In the trees just three minutes from downtown Birmingham, walk to Birmingham junior high and elementary schools. A select new subdivision of thirty custom quality homes built by Harry Wheeler.

Here is an outstanding example of double wing colonial. The plan is superb with basement, first floor laundry, huge paneled family room with large fireplace, first floor bedroom and bath, large living and dining room. Complete Frigidaire color kitchen, three extra large bedrooms on second level. Owners suite has dressing area and exquisite bath. Oversized garage. This is one of the most delightfully different homes in our area and exceptionally well priced at \$36,750

Open daily 1:00 to 7:00, all day, Saturday and Sunday. Take Big Beaver to Kingsley Drive, just east of Adams. Other models from \$31,900.



327 S. Woodward

MI 6-1234

## BRIDGE

### in BIRMINGHAM

BY BUD MAYBAUM  
Southern Michigan Bridge Association

The other week, my wife and I went to see our dear friends Dr. aris Dottie Barron, as Dottie was just released from the hospital. While there, we couldn't help but discuss my hand for today, which Dottie had played with Lullie Brunk in a Birmingham tournament.

Dottie felt she had a board coming from this particular opponent and that she was going to give this hand all she had. They did get a top board, but what was most unusual was to see how many North hands decided this was a spade hand and were defeated in four spades.

Both vulnerable: Dealer: South  
NORTH (Dottie Barron)  
♠ A J 8 7 6 3  
♥ K Q 10 4  
♦ 7 6  
♣ 3

WEST EAST  
♠ Q 10 9 5 3 ♠ K 4  
♥ J 5 ♥ 8 7 2  
♦ Q J 3 ♦ 5 4 2  
♣ 5 4 2 ♣ Q J 8 7 6

(Dealer) SOUTH (Lullie Brunk)  
♠ void  
♥ A 9 8 3  
♦ A K 10 9 8  
♣ A K 10 9

The bidding:  
SOUTH WEST NORTH EAST  
1 ♠ pass 1 ♠ pass  
3 ♠ pass 3 ♠ pass  
4 ♠ pass 4 NT pass  
5 ♠ pass 5 NT pass  
6 ♠ pass 7 ♠ all pass

Opening lead: 5 ♥  
With Dottie's years of experience in bridge and her know-how and keen imagination, she arrived at a perfect picture of Lullie's hand, which was well described to her.

IN THE PLAY of the hand, Lullie won the opening trump and took out a second round of trump. She knew she had to play the hand all out so she drew two rounds of diamonds, and on the third round, she trumped it high in dummy. When the suit broke evenly, she played the ace of spades and dropped a club and returned to the closed hand with a club and ruffed a club.

She then gained access to her hand with a ruff of spade, drew the remaining trump and the balance of her hand was high.

Dottie hopes to play a warm-up game or two in Birmingham before going to Pittsburgh for the Labor Day week end regional tournament. We all hope for her quick recovery and a swell game at Pittsburgh.

RECENT WINNERS in Birmingham tournaments include Mr. and Margaret Lockwood, Harold and Dottie Sandelman, Dr. Charles Patrick and Dick McCarris, Dorothy Kelly and Ruth Guild, Hank Georgia and John Noren, Arlene and Carl Bolton, Jane and Ken Cook, Cipa and Dr. Gerry Walker, Dr. W. Harold Barron and Edwin V. Clarke.

Pat and Herb Beyer, Ollie Swarzwald and Greta Shepherd, Donna Zogrodsky and Ralph Tyson, Judy Donaldson and Edna Canfield, Hilda Murphy and Duffy Peu, Lil Conrath and Peg Main, Clarence and Bud Maybaum, Ann Patent and Flo Fisher, Frank Lacy and Ruth Ann Keller and Ann Haskin and Doris Thompson.

THOSE WHO WON master points from the Birmingham area at the Port Huron Sectional include Pat and Herb Beyer, in the mixed pair, the open pair and the open team of four; Kay and Ernie Clinton in the mixed pair and open team of four; Charles W. Coffin in the men's pair and individual; Norma Keller, playing with her daughter, Ruth Ann Keller, in the women's pair and playing with Bob Cunningham in the mixed pair; Goldie Beal in the warm-up pairs; Bud Maybaum, in the individual; C. John Meeske and Edward Weller, in the blue water pair; Mary Melchie, playing with Marie Ver Linden, the president's pair; Charlotte England and Robert Quinn, also; Salie Simmons and Claude Bennett, in the mixed pairs; and Frances Westley and Dorothy Drefuss in the woman's pair.

How to weather a heat wave: Eat lightly of nourishing foods; don't get over-tired; take short rests; dress comfortably, the Michigan Heart Association advises.

## Movie Guide

Parenteen Committee  
Birmingham P.T.A. Council

MOVIE	Green Sheet	National Legion of Decency
Robin and the Seven Hoods	A-MY-Y	A-2
FBI Code 98	GA	A-1
Lilies of the Field	A-MY	A-3
The Cardinal	A-MY	B
New Interns	A-MY	B
Who Was That Lady?	A-MY	B

\* recommended as superior entertainment especially for children

CODE GREEN SHEET  
These audience symbols are intended as broad guides to selection, and do not indicate either recommendation or non-recommendation of the films to which they are applied.

A Adults  
MY Mature Young People  
Y Young People (16 years to 16 years)  
C Children (unaccompanied by adults)  
GA General Audience

NATIONAL LEGION OF DECENCY  
A-1 Morally Unobjectionable for General Patronage  
A-2 Morally Unobjectionable for Adults and Adolescents  
A-3 Morally Unobjectionable for Adults  
B Morally Unobjectionable in Part for All  
C Condemned  
SC A separate classification is given to certain films which, while not morally offensive in themselves, require some analysis and explanation as a protection to the uninformed against wrong interpretations and false conclusions.

## LOVELY DECEPTION

From the gracious lines and snug setting, it's difficult to visualize these outstanding features:

- ★ 4 Bedrooms
- ★ 2 Baths
- ★ Family Room
- ★ Secluded Patio
- ★ Full Dining Room
- ★ 2 Fireplaces
- ★ Custom Kitchen
- ★ Carpets and Draperies

Near Oakland Hills and available to you now due to Owner's transfer, so come see it today! You'll love it!



Come take a peek...

# BLOOMFIELD HILLS

IN THE

HILLS

... an address of significance!

Requests to 'preview' this utterly matchless community have been so overwhelming that (even though we're not quite ready for guests) we take particular pleasure in inviting your inspection of the wooded rolling terrain... the auspicious entranceway... and the luxurious grouping of homes from \$28,400 this weekend. Location: Square Lake Rd. between Telegraph and Maple Rds. in Bloomfield, MA 6-3500 or 2.

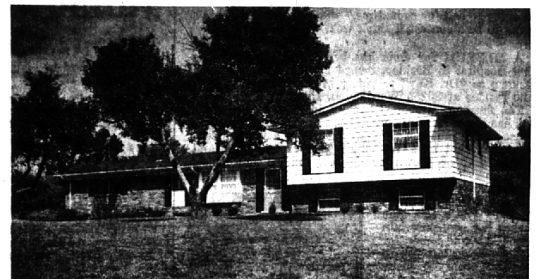
THE herman



frankel ORGANIZATION

Model open daily and Sun. Noon-8 pm; Sat. Noon-6 pm

## ON A HIGH, COOL SITE



## CUSTOM BUILT TRI-LEVEL PLUS BASEMENT

- Two Years Old
- 4 Large Bedrooms
- 2 Baths and Lav With Unfinished Shower
- Family Room Opening on TREE-LINED YARD
- TWO FIREPLACES
- Slate Foyer

\$36,500

DON WHITFIELD

BERNDT, ETTER & VAN MAAREN, INC.

360 HAMILTON

MI 4-3500



3836 Oakhills Drive



Lighting your way to better living

BENJAMIN & BISHOP, INC. REALTORS

259 S. Woodward, Birmingham, Michigan

MI 4-3232 - JO 4-5728