

### Area Campers Given Awards

The following Birmingham-Bloomfield Hills campers have been honored with medals at the final banquet at Lost Trail Camp, Sula, Mont.

The west gallogly medals for best camper went to Jeffrey Booth, 172 Chesterfield, Bloomfield Hills, and Grame D. Smart, 20 Lone Pine, Bloomfield Hills.

The directors medal was awarded to Donald W. Coombe, 4423 Parklane Court, Bloomfield Hills, and the Indian lore medals to Angus Campbell, 4891 Keithdale Lane, Bloomfield Hills; Stuart Harris, 1051 Country Club Drive, Bloomfield Hills.

The swimming medals to Mark Totoff, 907 S. Reading, Bloomfield Hills, and Tom Snelman, 759 Lake Park, Birmingham.

THE LEADERSHIP medals went to John Neiman, 657 Lake Park, Birmingham, and Carleton A. Smith, Jr., 225 Guilford, Bloomfield Hills.

Simply spin your dial to Midwest 4-1100 and a professionally-trained ad-writer will help you prepare your message.

**Who is STANLEY M. BROWN?**

Paid Political Adv.

**MID-SUMMER SALE**



10-SPEED RACER SPECIAL ..... \$49<sup>88</sup>

5-SPEED RACER ..... \$44<sup>88</sup>

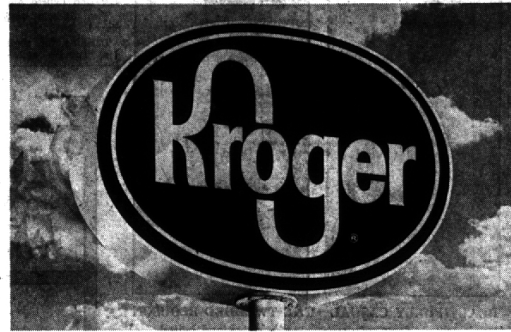
3-SPEED LONDONER LIGHTWEIGHT BIKE ..... \$32<sup>88</sup>

REDUCED PRICES ON COLUMBIA and HUFFY BIKES All Sizes

**NORWOOD SALES**

2826 Coolidge Hwy., Berkeley  
Between 11 & 12 Mile Road LI 7-5364  
OPEN EVENINGS 'TIL 9 P.M.

# When the Kroger Sign Goes Up . . . Prices Come Down!



Coming Mon., Aug. 10, 1 P.M.

KROGER'S NEWEST SUPERMARKET  
**3675 W. MAPLE**  
AT LAHSER, BIRMINGHAM

## PLAY "GIFT BINGO" OVER 50,000 WINNERS!

NOTHING TO BUY! IT'S EASY! IT'S FUN! START YOUR BINGO CARD TODAY!

CHOICE BLADE CENTER CUT

### CHUCK ROAST

39¢ LB.

U.S. GOVT. GRADED CHOICE TENDER

RIB STEAK . . . . . 79¢

U.S. GOVT. GRADED CHOICE

CHUCK STEAK . . . . . 49¢

30 EXTRA TV STAMPS WITH COUPON-HYGRADE'S

CORNER BEEF . . . . . 59¢

SEVEN 1/2 SAYS

SLICED BACON . . . . . 49¢

SERAN WRAP

SLICED BOLOGNA . . . . . 49¢

CLEANED WHOLE

### FRESH FRYERS

25¢ LB.

PLUS 50 EXTRA TOP VALUE STAMPS

CENTER CUT RIB

### PORK CHOPS

79¢ LB.

Clip and save. You can play more than one card.

**TOP VALUE STAMPS KROGER 'GIFT BINGO' PLAYING CARD**

**YOU CAN WIN 4 WAYS!**

Every time you visit our stores, pick up a "Gift Bingo" slip. On the back of each slip, you'll find a "Gift Bingo" playing card. Each card has 25 "Gift Bingo" stamps. As you shop, you'll collect stamps for various items. When you collect 25 stamps, you can win one of four prizes: (1) a \$5.00 Top Value Stamp; (2) a \$10.00 Top Value Stamp; (3) a \$25.00 Top Value Stamp; or (4) a \$50.00 Top Value Stamp. The \$50.00 Top Value Stamp is the grand prize. You can win any of these prizes by collecting 25 stamps. The \$50.00 Top Value Stamp is the grand prize. You can win any of these prizes by collecting 25 stamps.

**AN INVITATION**

To Our Customers and Friends Who Are BIRMINGHAM RESIDENTS

Shop And Save NOW AT MORRIS Stores

In The Royal Madison Plaza  
12 MILE at CAMPBELL RDS.  
MADISON HEIGHTS

featuring

THE QUALITY BRANDS AND THE DISCOUNT SAVINGS THAT HAVE MADE MORRIS SO POPULAR IN BIRMINGHAM

GARDEN SUPPLIES

SPORTING GOODS

HOUSEWARES

APPLIANCES

CAMERAS, FILMS

RECORD PLAYERS

TOYS, GAMES

POOLS, Etc.

YOUR MONEY BUYS MORE AT

# MORRIS

The Quality Discount Stores

OPEN NITELY 'TIL 9 • SUN. 10 to 5

Royal Madison Plaza  
CORNER 12 MILE at CAMPBELL

WEEK-END SPECIAL! KROGER HOMOGENIZED

## FRESH MILK

3 \$1.00

1/2 GAL. CARTONS

LESSER QUANTITIES AT REGULAR PRICE!

---

KROGER BUTTERMILK VARIETY

## WHITE BREAD

6 \$1.00

20-OZ. LOAVES

LESSER QUANTITIES AT REGULAR PRICE!

---

WHITE OR COLORED

## NORTHERN TISSUE

4 \$2.25

WITH COUPON AT RIGHT

---

WHOLE BEAN

## SPOTLIGHT COFFEE

3 \$1.89

1-LB. BAG

---

SWEET RED RIBE WHOLE

## WATERMELON

49¢

NONE PRICED HIGHER!

---

FRESH RED RIBE CALIF.

## STRAWBERRIES

59¢

**775 EXTRA TOP VALUE STAMPS**

WITH COUPONS BELOW

<p><b>25 EXTRA TOP VALUE STAMPS</b> WITH THIS COUPON AND PURCHASE OF 2 PACKAGES OF ENERGINE LIGHTER FLUID</p> <p><b>25 EXTRA TOP VALUE STAMPS</b> WITH THIS COUPON AND PURCHASE OF 50 STABILIZER AND KROGER SALAD DRESSING</p> <p><b>25 EXTRA TOP VALUE STAMPS</b> WITH THIS COUPON AND PURCHASE OF 2 1/2 LBS. OF 2 ROASTING CHICKENS</p> <p><b>50 EXTRA TOP VALUE STAMPS</b> WITH THIS COUPON AND PURCHASE OF 2 1/2 LBS. OF FRESH GROUND BEEF</p> <p><b>50 EXTRA TOP VALUE STAMPS</b> WITH THIS COUPON AND PURCHASE OF 1 LB. OF SPOTLIGHT COFFEE</p> <p><b>50 EXTRA TOP VALUE STAMPS</b> WITH THIS COUPON AND PURCHASE OF 1 LB. OF NORTHERN TOILET TISSUE</p> <p><b>100 EXTRA TOP VALUE STAMPS</b> WITH THIS COUPON AND PURCHASE OF 100 PAPER NAPKINS</p>	<p><b>50 EXTRA TOP VALUE STAMPS</b> WITH THIS COUPON AND PURCHASE OF 1/2 DOZ. OF COUNTRY OVEN COOKIES</p> <p><b>50 EXTRA TOP VALUE STAMPS</b> WITH THIS COUPON AND PURCHASE OF 1/2 DOZ. OF FROZEN BAKED FOOD</p> <p><b>50 EXTRA TOP VALUE STAMPS</b> WITH THIS COUPON AND PURCHASE OF 1/2 DOZ. OF BROKER LAYER CAKE</p> <p><b>50 EXTRA TOP VALUE STAMPS</b> WITH THIS COUPON AND PURCHASE OF 1/2 DOZ. OF WEST VIRGINIA HAM</p> <p><b>50 EXTRA TOP VALUE STAMPS</b> WITH THIS COUPON AND PURCHASE OF 1/2 DOZ. OF NORTHERN TOILET TISSUE</p> <p><b>50 EXTRA TOP VALUE STAMPS</b> WITH THIS COUPON AND PURCHASE OF 1/2 DOZ. OF NORTHERN TOILET TISSUE</p> <p><b>50 EXTRA TOP VALUE STAMPS</b> WITH THIS COUPON AND PURCHASE OF 1/2 DOZ. OF NORTHERN TOILET TISSUE</p> <p><b>50 EXTRA TOP VALUE STAMPS</b> WITH THIS COUPON AND PURCHASE OF 1/2 DOZ. OF NORTHERN TOILET TISSUE</p>
--	--

SHOP NOW AT OUR KROGER STORE, 725 E. MAPLE, BIRMINGHAM