

AVAILABLE SEPTEMBER 1st

FAMILY OF FINE COLONIALS

Gaslight Town

BIRMINGHAM SCHOOL DISTRICT

Choose from One of Our 3 or 4 Bedroom Models - Bring Your Own Plans.

The "AUTOCRAT"
3 bedrooms • 2½ baths
• beautiful family room
• owner's sleeping apartment with private dressing room and bath.

\$27,500 inc. lot

Model: MI 7-1544

Best value in Birmingham Area

BENECKE and KRUE

Movie Guide

Parenteen Committee
Birmingham P.T.A. Council

| MOVIE | Green Sheet | National Legion of Decency |
|---------------------------|-------------|----------------------------|
| Zulu | A-MY-Y | A-3 |
| Fury of Smuggler's Bay | A | A-2 |
| Spencer's Mountain | GA | A-3 |
| PT-109 | A | A-1 |
| Robin and the Seven Hoods | A | A-2 |
| FBI Code 98 | A-MY-Y | A-1 |
| Bullet for a Badman | A | A-2 |
| Valley of the Dragons | A | A-1 |

*recommended as superior entertainment especially for children

CODE GREEN SHEET
These audience symbols are intended as broad guides to selection, and do not indicate either recommendation or non-recommendation of the films to which they are applied.

A Adults
MY Mature Young People
Y Young People (12 years to 16 years)
C Children (unaccompanied by adults)
GA General Audience

NATIONAL LEGION OF DECENCY
A-1 Morally Unobjectionable for General Patronage
A-2 Morally Unobjectionable for Adults and Adolescents
A-3 Morally Unobjectionable for Adults
B Morally Objectionable in Part for All
C Condemned
SC A separate classification is given to certain films which, while not morally offensive in themselves, require some analysis and explanation as a protection to the uninformed against wrong interpretations and false conclusions.

Pastime

(Continued from 1-D)

tant that the dress be authentic. A Maikosan, for example, would not be dressed as a geisha. You see, a maikosan is a very young girl studying to be a geisha, and her kimono is not the same. For one thing, her sleeves are longer."

"THE GEISHA," she said with a twinkle, "is not what some Westerners think but occupies a very unique position in society. She is schooled for many years in the arts of Japanese culture and conversation."

Geisha means "accomplished person," and she is educated to discuss politics with men of wit and perception as well as to entertain skillfully in the performing arts. "It is not the custom for Japanese men to take their wives out in the evening," Mrs. Chestnut pointed out. "Instead, the geisha may be hired at considerable expense for an evening's companionship."

THE SAKURA DOLLS are made to be observed at close range. Mrs. Chestnut was taught blind stitching and how to manipulate the beautiful fabrics especially cut for dolls. The material is 14 inches wide, the size suitable for the width of the kimono. To be appreciated the dolls should be seen in their exquisite colors and detail.

In a beautifully illustrated book "Sakura Dolls of Japan" by Martha Sue Abston and Yoshiko Uchikoe, published in Tokyo, many of Mrs. Chestnut's dolls appear in color plates.

When the Taylor family moved to the capital of Japan, Mrs. Chestnut continued her lessons, this time at the officer's Club.

ONE OF HER classmates was Mrs. Abston whose husband was connected with the embassy. When she decided to do a book on dolls, she asked Mrs. Chestnut, who had made more dolls than anyone in the class, if she might have some photographs for book illustrations. An acknowledgment appears in the front of the book.

Mrs. Abston wrote several personal inscriptions to her friend "Della Chestnut" on the fly leaf. The dolls on display in the home of the Taylors vary in size and style. In a glass case, the wisteria girl, a dancing figure, stands two feet tall.

IN CONTRAST Mrs. Chestnut made a small baby doll that fits in an ancient begging basket of a Buddhist priest. There are many elaborately dressed dolls, feudal lords, a samurai warrior, figures in ceremonial robes. One quite unlike these is a little girl in kimono that she made for her granddaughter Lillis, soon to be a ninth grader at Derby Junior High.

It has an unmistakable Western hair style and the face of an Occidental. The explanation is simple. Fond Grandmas had a Japanese artist copy Lillis' features from a snapshot and perfectly reproduce her young granddaughter's face and hair.

"ONE OF THE officer's wives had a doll made of every member of her family, boxed them and sent them back to the States to her mother. You can imagine what a delightful gift that was."

Perhaps some Westerners have heard of Ohiyasama, the Doll's Day Festival, held every year on the third day of the third month. This is the day girls all over Japan bring their collections out of storage. It was established during the Edo period toward the end of the 18th century, although it had been observed much earlier in a simpler form.

The girls arrange their dolls in seven tiers (a lucky number) following a prescribed pattern. This arrangement represents a scene from court life, with the nobility at the top and attendants on lower shelves.

THE DOLLS are not playthings, nor are they like the sakura type of doll. They are modeled after small children and used for display only.

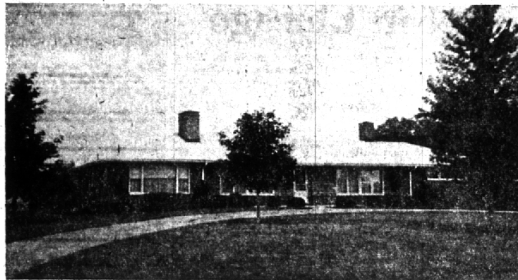
Sweets and cakes, sake and peach blossoms are often a part of the festival preparations. And, although times are changing and Japan is becoming extremely modern, Doll's Day is celebrated much as it was in the past.

Doll-making proved to be more than an outlet for Mrs. Chestnut. It opened doors to the history of another culture and an understanding of another race. As in the case of the festival dolls, Mrs. Chestnut's sakura are not toys but a handsome collection representing more than six years of painstaking labor and love.

THEY ARE EXQUISITE products for display use and should be prized for generations to come.

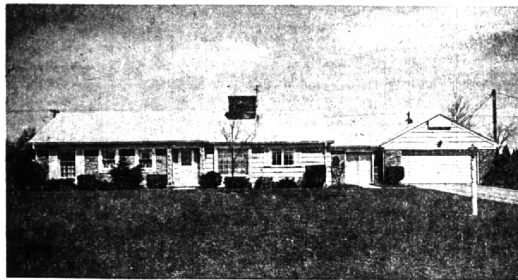
When the family first returned to this country, Mrs. Taylor had a large old china cupboard sent up from North Carolina, hoping to use it as a showcase for her mother's dolls. But, she found it was too massive for their present house. She hopes to have a room divider designed to hold a number of the beautiful dolls, each an object of art by itself.

ON A HILLTOP WITH A DUCK POND



Superbly built with minimum maintenance an important factor. The plan is most liveable and adaptable. Two large bedrooms and bath plus a third bedroom or den (paneled) and second bath. The glassed and heated porch overlooks the pond, as does the delightful kitchen. The 8x16 first floor utility room is cross ventilated and a pleasure to work in. Hobby and storage space in the basement. \$35,900.

GILBERT LAKE PRIVILEGES



A delight to show for it is beautifully decorated and superbly maintained. You'll find the farm kitchen-family room most inviting, and the glassed-in breezeway a relaxing spot both winter and summer. All three bedrooms are twin size; two full baths (one off master bedroom) two fireplaces, one in kitchen and one in the handsome living room. Rec. room in the basement. \$39,900.

FRONTAGE ON FOREST LAKE



A sea wall and a sandy beach, a beautifully landscaped, fenced yard shaded by tall trees. Add to the setting, a uniquely designed home with a huge second floor, cherry paneled family room (serviced by a dumb waiter) a dramatic step-down living room, separate dining room, three very large bedrooms, a 23x20 utility room that serves as a dressing room (full bath with shower) for swimmers. Many, many extras are included that add quality and liveability.

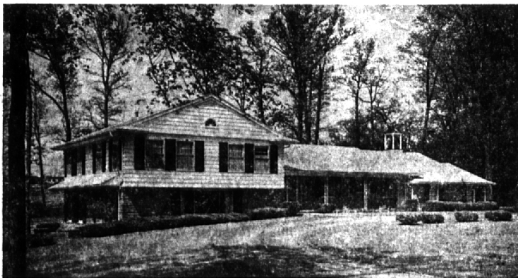
BLOOMFIELD VILLAGE—

QUARTON SCHOOL



Immaculate! — just re-decorated throughout from paneled rec room in basement to all four really big bedrooms on second floor. A wonderful family home on a 120 x 160 ft. lot shrubbed for privacy. Three full baths, a powder room and lav. in basement. Paneled family room with concealed bar (refrigerator included) spacious living room, superb kitchen with unusually large breakfast room. Tall trees, cement patio, circular drive. A solid value at \$43,900.

NEAR CRANBROOK SCHOOL



Beautiful setting in an excellent location just north of Lane Pine Rd. in the Bloomfield Hills area. Superbly built and meticulously maintained, it is a pleasure to show. All four bedrooms are unusually large. There are three tiled baths and a lav. The wide-windowed living room has a woody view, the huge porch invites summer relaxation, and the paneled family room year-round enjoyment. An excellently planned kitchen has built-ins and large eating area. Quality—beauty—location!

THANKS A MILLION LATHRUP VILLAGE

for the 1,000,000.00 Sales Volume in the first 6 months of 1964.

Our 51 sales totaled more than \$1,000,000.00.

WE CAN SELL YOUR HOME

Call Now for Expert Appraisal

- REPRESENTATIVES -

Karliej Upstill-Vicki Terry-Larry Sophia
Dave Redwood-Robert Linebaugh
Franklin Lake-George Johnston

IN LATHRUP IT'S

H. L. MARTIN CO.

OWNED BY

Dorothy Martin L. T. Snell

27465 Southfield Road

EL 6-1120



Sound Investment ...

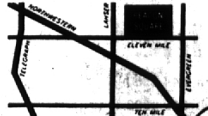
because "THE AWARD COLONIAL" has 2000 square feet of award-winning ideas ... separate foyer entry, 4 large bedrooms, formal living room, large paneled family room with colonial-designed fireplace and parquet flooring, convenient Hotpoint-equipped kitchen, spacious breakfast area and separate snack bar ... priced at \$28,990 (or as low as \$27,985) with financing to suit your needs.

Fun In The Sun,

with your own share in a private Olympic-size swimming pool, park and recreation area right in BEACON SQUARE. And this prestige community with its paved curvilinear streets, city water and sewers and low taxes is within 10 minutes of the finest suburban shopping centers, schools and churches. Luxury, quality, beauty and value ... it's all here for you in BEACON SQUARE.

BEACON SQUARE

Beacon Square is located on 11 Mile Road, 1/2 mile west of Laker. Model homes are open weekdays from 1 p.m. to 5 p.m. Saturdays-12 noon to 4 p.m. Sundays-12 noon to 5 p.m. Closed Wednesdays. Model Phone: EL 6-3707.



THE SMALLER COMPANY

MAX BROOCK INC.

1895 — 1964

300 S. Woodward

Open daily 9-8
Saturday 9-5

MI 4-6700

