

Kennedy Papers To Be Exhibited At Art Museum

A traveling exhibit of personal papers and memorabilia of the late President John F. Kennedy, including the handwritten draft of his inaugural address, his rocking chair and similar objects, will be at the Detroit Institute of Arts, starting Saturday.

The exhibit will be open to the public without charge and will continue for four days.

Sponsored by the John F. Kennedy Library, it will present 70 photographs and many of the historic documents and personal papers associated with the Kennedy administration. Among the latter will be the President's notes on the Cuban missile crisis, the text of treaty discussions, civil rights and many speeches.

ALSO INCLUDED will be actual notes President Kennedy scribbled on dinner menus, envelopes and other scraps of paper. One invitation list, drawn up when he was serving in the Senate, shows his handwritten addition of the name "Jackie Bouvier" to the guest list. The Kennedy Library will be built along the Charles River in Boston, on a site chosen by the President last fall and donated by Harvard University.

The library will be built by contributions from the American people, at a cost of \$10 million and the then turned over to the federal gov-



JOHN F. KENNEDY

half-finished, with approximately 1,500,000 records microfilmed so far. This project is expected to be completed during the summer.

Black said there are no architectural plans for the library yet, but a committee of 19 architects and designers has submitted a general survey. Several American architects are now under consideration by the Kennedy family, and it is expected a choice will be made by mid-summer.

Sells at Art Fair

Dorothy Hughes of Birmingham is among the regional artists selling their original works at the Street Art Fair which began Wednesday and continues through Saturday in Ann Arbor. Hours are 9 a.m. to 10 p.m. today and Friday and 9 a.m. to 6 p.m. Saturday.

'Androcles' Will Open at Will-O-Way

"Androcles and the Lion" will open Friday at Will-O-Way Apprentice Theatre, Bloomfield Hills, continuing the dramatic trade school's second summer play season.

The George Bernard Shaw comedy will be presented Friday, Saturday and Sunday evenings at 8:40 p.m. for three week ends, closing Aug. 16. Will-O-Way is located at 785 W. Long Lake Road, just off Telegraph.

A cast of 34 appears in the classic. Set in the early Roman period when Christians were being thrown to the lions, its comedy revolves around animal-lover Androcles, a Christian who has a pet lion.

TWO BIRMINGHAM residents will play the title roles. Darryl Mazur, 2463 Derby Road, will appear as Androcles, and James L. Cunningham, 2425 W. Wattlees Road, is the Lion.

Other local members of the cast will be Chuck Keboe, 1787 Henrietta, as the Centurion; Michael A. Norris, 1720 Dorchester, as the Captain; Robin Turner, 785 W. Long Lake Road, Bloomfield Hills, alternating as Lovina; and Jim

Wedner, 3688 Darcy, Birmingham, as Lentulus.

Appearing as one of the Christians will be Mary Savoie, 788 Harmon.

Named as Finalist

Nancy J. Wilson, daughter of Mr. and Mrs. Whitford A. Wilson, 27073 Belmont Lane, Southfield, was chosen Thursday as one of the two piano finalists from Michigan at Intarlocos.



APARTMENTS

Three apartments available for immediate occupancy. Reservations now being accepted for October in final section.

(Hotspot Appliances)

FOX-CROFT APARTMENTS

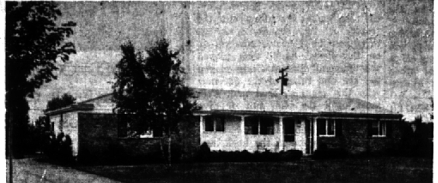
In Bloomfield

Maps and Telegraph, Phone: JO 6-8216

THE KEATING COLUMN

WESTCHESTER

\$28,900



This most delightful brick rambler is walking distance to grade and high schools, transportation and shops. Four bedrooms, full basement, exciting rec room. In top condition. One of the sharpest homes around, and at \$28,900, it is solid value.

HICKORY HEIGHTS

\$31,900



Unique isn't it? This home has a truly exceptional floor plan that flows from room to room for most delightful entertaining areas. The bedrooms are spacious. There is carpeting in the living room, dining room, and bedrooms, slate foyer, lovely family room with beautiful views, Anderson window walls, sparkling kitchen with all the built ins. Birmingham schools. An excellent value at \$31,900.

FRANKLIN

\$33,900



The setting for this luxury rambler is a large landscaped site in an excellent neighborhood. It has three larger than normal bedrooms, kitchen with built-in General Electric oven, range, dishwasher, and planning desk. Screened porch, large family room. Birmingham and St. Regis schools. Lovely home for \$33,900.

BIRMINGHAM WOODS

\$34,900



In the trees just three minutes from downtown Birmingham, walk to Birmingham junior high and elementary schools. A select new subdivision of thirty custom quality homes built by Harry Wheeler.

Here is an outstanding example of double wing colonial. The plan is superb with basement, first floor laundry, huge paneled family room with large fireplace, first floor bedroom and bath, large living and dining room. Complete Frigidaire color kitchen, three extra large bedrooms on second level. Owners suite has dressing area and exquisite bath. Oversized garage. This is one of the most delightfully different homes in our area and exceptionally well priced at \$34,900

Open daily 1:00 to 7:00, all day Saturday and Sunday. Take Big Beaver to Kingsley Drive, just east of Adams. Other models from \$31,900.



327 S. Woodward

MI 6-1234

*ask not
What your country is going to do
for you - ask what you can do
for your country - my fellow
citizens of the world - ask not
what America will do for you -
but rather what you can do
for freedom. Remember just -
the same high standard of
sacrifice and strength of heart
and mind that we need for
you. Its alliance for
peace and progress will be forged*

DRAFT OF KENNEDY'S INAUGURAL ADDRESS
The President's own hand-written notes.

RAVINE, STREAM, TREES



759 ROBINHOOD CIRCLE
(Riverside Meadows)

- Large sliding window walls open living room, dining area, and family room to outside.
- Four bedrooms, 2-1/2 baths.
- Two fireplaces. Two brick walls.
- All built-in's in kitchen.
- Some carpeting and drapes.
- A children's paradise in this secluded area and they can walk to grade school.
- Immediate occupancy.
- Don't miss seeing.

Price \$38,700

BERNDT, ETTER & VAN MAAREN, INC.

360 Hamilton, Birmingham, Michigan

MI 4-3500

Seven beautiful models...



MODEL HOURS in all six Thompson-Brown communities are from 11 a.m. to 8 p.m. Monday through Friday and Sunday. Open until 6 p.m. on Saturday. Closed on Thursdays.



the Monterey • IMMEDIATE OCCUPANCY • \$44,900
Beautiful lakeside site with a view of the water from the living room. Four bedrooms (including owners' suite), study, large basement, huge family room, 2 1/2 baths. A unique, walled front courtyard. Truly a residence of distinction.

Homes from \$32,950

Incl. Base Price Lot



Phone MA 6-7522

Unique, wooded lots...



... West Bloomfield



the Williamsburg

Three or four bedrooms, 2 1/2 baths. Huge family room. Owners' suite with true walk-in closet. Custom craftsmanship throughout.

INCLUDING BASE PRICE LOT
\$26,950

Homes from \$26,950

Incl. Base Price Lot



Phone MA 6-3244

Quiet, rolling countryside...



... North Farmington



the Eaton

Distinction, abundant space. Four Bedrooms, 2 1/2 baths, basement. First-floor laundry, 2-car garage. Traditional... beautiful.

INCLUDING BASE PRICE LOT
\$28,700

Homes from \$28,700

Incl. Base Price Lot



Phone MA 6-3233

THOMPSON-BROWN Company

Kenwood 1-8700
19426 Grand River