

Livonia Man In 19th Race

William W. Brashear, candidate for Republican nomination in the 19th Congressional District, which includes Bloomfield Township, resides at 16159 Southampton Court, Livonia.

He was born in Henderson, Ky., in 1907, and moved, with his family, to Royal Oak, where he resided for 25 years.

He attended the University of Michigan and Detroit College of Law, and was admitted to the Michigan Bar in 1928. Since then he has practiced law continuously (36 years), in Detroit and Livonia, except while serving in the F.B.I.

and as an officer in the United States Navy.

HE SERVED on the charter commission for the city of Livonia, and after the city was incorporated, in 1950, became its first city attorney, and assistant to the mayor.

In 1956, he was elected Mayor of the City of Livonia, and served three terms in that office.

During this period, he also acted as chairman of the Wayne County Board of Public Works. He is presently a partner in the law firm of Brashear, Brashear and Mice.

D'Agostino's Salons

DETROIT'S FINEST

PROUDLY PRESENTS

Nannette and Lori

Formerly From Another Birmingham Salon To Our Celebrated Staff

If You Care Enough

16007 W. 8 Mile

4301 W. 13 Mile

VE 7-6922

LI 9-2286

Scout Leader Training at N.M. Ranch

Owen R. Leffer, 1150 Yorkshire, Birmingham, is taking specialized training in Boy Scout Leadership at the Philmont Volunteer Training Center which is operated by the Boy Scouts of America at the Philmont Scout Ranch in north-eastern New Mexico.

Participating in the family program at the Volunteer Training Center are Mrs. Kay Leffer and children, Robert, 14; Kathie, 13; Sara, 10; and Jane, 7.

The Training Center is located on the slopes of the Sangre de Cristo Range of the great Rocky Mountain chain where 8,000 Explorers and older Boy Scouts will take part this summer in 12-day expeditions at the largest boys' camp in the world.

Leffer has been active in Scouting for nine years. He is currently serving as scoutmaster, Troop 1004, Detroit Council. He is associated with MacManus, John & Adams as an account supervisor in Bloomfield Hills.

Local Airman Named Top in Texas Unit

Airman Second Class William E. Willard, son of Mr. and Mrs. Clarence D. Appman of 2856 Lansergan Drive, Birmingham, has been selected Outstanding Airman of the Month in his Air Training Command (ATC) unit at Webb AFB, Tex.

Airman Willard, a personnel specialist, was chosen for the honor in recognition of his exemplary conduct and duty performance.

He is assigned to the Headquarters Squadron, 3560th Air Base Group, which supports the ATC mission of training airmen and officers in the diverse skills required by the nation's aerospace force.

The airman, a graduate of Ferris State High School, entered the Air Force in June 1961.

Successful Family Want Ad Plan. \$2.50 3 Weeks. Call MI 4-1100.

Summer Science School Aim Is Enlightenment

This year in the Birmingham summer school sciences program the children will be participating in various activities. Areas of particular interest which the classes will be studying are chemistry, magnetism and electricity, astronomy, nature study, automobile, and rocks and minerals. The program is designed to enrich the activities which the children have during the year in science.

This summer the classes will be sampling at Pond Lake, where the children will study animals and plant life while living in tents out-of-doors. While there, they will have an opportunity for fishing and canoeing.

The classes have also planned various field trips, such as a visit to the Cranbrook Plantarium and

the Ford Motor Co., where the children will visit the foundry and the engine assembly.

THE PROGRAM is organized so that every child has an opportunity to experiment.

The program is made possible through the use of group work. In the groups the children themselves actually carry out the necessary experiments, whereby they have this opportunity to learn the care and use of the equipment.

Each child also has planned an individual project which they work on once a week. This project can be over the material covered for the week or it can be of six weeks duration.

At Westchester School the program is under the direction of

Airman Stationed In German Base

Airman Second Class Robert L. Norris, son of Mrs. Elsie Norris of 16280 Kirkshire, Birmingham, has arrived for duty with a unit of the U.S. Air Force in Europe (USAFE) at Sembach AB, Germany.

Airman Norris, an administrative specialist, previously served

Richard Davidson and Tom Richards, who both work with the groups of students at the same time. This allows for the individual attention which a child or group needs for carrying out their experiments.

The same program is in operation at Adams School under the direction of Bruce Hayes and Wil Hinz.

This summer the class enrollment is 52 for all four groups; 25 children at Westchester and 27 children at Adams School.

at McClelland AFB, Calif. His new unit supports the USAFE mission of providing the major air contribution for defense of the NATO countries.

The airman, a graduate of Steinhilf High School, attended Paris State College, Big Rapids, prior to entering the service in August 1962.

TERRACE BEACH

On Beautiful ELIZABETH LAKE

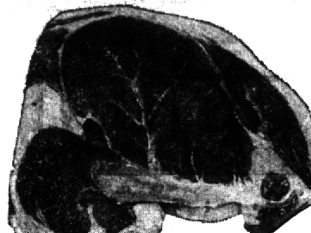
OPEN FOR SUBSCRIPTIONS

Private



Year-round fun Now: Swim Picnic on the beach This Winter: Ice fishing, skating

Call and make a date to discuss our yearly moderately priced subscription plan. Phone 682-5232—Pontiac



"Super-Right" 2 to 3 Pound Sizes
SPARE RIBS
LB. **49^c**

Gov. Inspected Fryer Parts
LEGS LB. 49^c
BREASTS LB. 53^c
With Ribs Attached

Cut from "Super-Right" Quality, Fully Matured Corn-Fed Beef

Steak Sale!

ROUND **79^c lb** | **SIRLOIN** **95^c lb** | **T-BONE** **99^c lb**

Porterhouse Steaks . . . LB. 1⁰⁵

Boneless Cooked **CANNED HAMS**
6 LB. SIZE 3⁹⁹



"SUPER-RIGHT" SKINLESS (LB. PKG. 45c) **2 LB. PKG. 85^c**
All Meat Franks . . . **2 LB. 85^c**
"SUPER-RIGHT" BONELESS RUMP OR **Rotisserie Roast LB. 89^c**

No Coupons, No Gimmicks, No Limits . . . Just Quality Merchandise at Low Prices!

California Bartlett **Pears**
LB. **19^c**
SANTA ROSA **Plums . . . LB. 29^c**

Fresh Michigan Peaches **Peaches**
3 LBS. 49^c
SUN GRAND **Nectarines LB. 29^c**

California Vine-Ripened **Cantaloupes**
3 27 SIZE 1⁰⁰
FRESH, 165 SIZE **Lemons . . . DOZ. 59^c**

Chocolate Covered **CHEERIO Ice Cream Bars**
12 In Pkg. 49^c



A&P Red, Sour Pitted CHERRIES
2 1-LB. CANS 29^c

SPECIAL — JANE PARKER **Banana Nut Loaf**
2 13-OZ. CAKES IN PKG. 79^c
JANE PARKER PLAIN, SUGARED OR CINNAMON **Donuts SAVE 6c PKG. OF 12 21^c**
JANE PARKER CREME SANDWICH **Cookies 36 IN PKG. 3 1 1/2-LB. PKGS. 1⁰⁰**

10c OFF **Giant Tide 64^c**
POWDERED DETERGENT **2-LB. Giant Sail 15-OZ. 55^c**

Fruit Cocktail SULTANA 3 1-LB. 13-OZ. CANS 95^c
Peaches IONA YELLOW CLING SLICED OR HALVES . . . 5 1-LB. CANS 79^c
dexola Oil 7c OFF LABEL 1-QT. 6-OZ. BTL. 42^c
A&P Tuna WHITE ALBACORE OUR FINEST QUALITY 4 7-OZ. CANS 99^c
Grapefruit Juice A&P BRAND 1-QT. 14-OZ. CAN 39^c
Yukon Beverages . . . 12-OZ. CAN 7^c
Heinz Tomato Soup 10 1/2-OZ. CAN 10^c

COTT'S ASSORTED BEVERAGES **LOW-CAL 6 12-OZ. CANS 49^c**

THE GREAT ATLANTIC & PACIFIC TEA COMPANY, INC. **A&P Super Markets**
AMERICA'S RESPONSIBLE FOOD MERCHANDISE SINCE 1859
All Prices Effective thru Sat., Aug. 14 10⁰⁰ Eastern Mich. A&P Stores.

Scott-Shuptrine

Our SUMMER SALE Has Many EXTRA VALUES In Fine Home Furnishings

But one of the many Extra Values offered in Scott-Shuptrine's Summer Sale is Selection 120 by Heritage. Your living requirements for beauty and comfort are easily attained. From a large number of component parts you create design and size from 30" to 120" in length. Arm styles, pillow treatments, legs, skirted bases, bolsters, finishes—and a distinctive fabric selection that fully provides for color taste and correlation. Whatever your choice from Selection 120, sofa or chair, you are assured of fine design and superb quality . . . and during the Summer Sale at Extra Value. Come in now and take advantage of the many Extra Values available in Scott-Shuptrine's Fine Home Furnishings.

Provincial

SPECIAL PAYMENT PLAN AVAILABLE
BIRMINGHAM—1185 South Adams, Midwest 4-8834
CLOSED WEDNESDAYS
OPEN MONDAY AND THURSDAY EVENINGS UNTIL 9