

BRIDGE

in BIRMINGHAM

BY BUD MAYBAUM
Southern Michigan Bridge Association

Goldie Beal, whose name usually appears among the winners from the Birmingham area, did attend the Section Tournament at Port Huron and had a successful time there.

One of the most interesting hands that she held is our hand for today, and it is a good example of how the top results may be obtained by carefully handling the cards and taking advantage of all the knowledge that the defenders give you.

Vulnerable: NORTH and SOUTH
Dealer: SOUTH

NORTH
♠ J 4
♥ J 9 6 3 2
♦ 5 2
♣ 10 7 4 3

WEST **EAST**
♠ Q 2 ♠ 8 7 5
♥ K Q 8 4 ♥ A 10 7 5
♦ 10 9 8 7 ♦ 6
♣ K J ♣ A Q 9 8 2

(Dealer) **SOUTH** (Goldie Beal)
♠ A K 10 9 6 3
♥ 9 4
♦ A K J 4 3
♣ 6 5

The bidding:
SOUTH WEST **NORTH** EAST
1 ♠ 2 ♦ pass pass
4 ♠ pass pass double
Opening lead: 10 ♦

West's lead of the 10 of diamonds was won by Goldie with the jack, and here Goldie had to decide the position of all cards. She had two losers in the club suit and one in the diamond suit, and to hold the loss to these three tricks, she must find West with two spades to the queen. She set out after her contract with this mind.

GOLDIE NOW LED a small diamond from the closed hand, and East and West were unable to defeat the contract. Actually East ruffed West's winner in diamonds and led a trump back which was the best play. However, Goldie went up with the ace of trump and then led a second small diamond and ruffed it in dummy. She returned to her hand with a ruff of a heart and drew the remaining trump and conceded the two club losers.

RECENT WINNERS in Birmingham tournaments include Grace Stone and Lillian Smith, Jim Crabb and B. A. Summer, Fred Canaday and Frank Allen, Phyllis Malstrom and Jack Malstrom, Doris Thompson and Arlene Heck, Donna Zadgrozky and Tina La May, Dorothy and Chuck Thumser, Craig Madvin and Kenny Gould, Stuart Murphy and Jim

Crabb, Lulle Brunk and Betty Pope, Marie La Prise and Dorothy Lucy, Clarence and Bud Maybaum, Edwin V. Clarke and Bud Whitman.

Pat and Herb Beyers, Lillian Conrath and Adele Todd, Magda and Jerry Gould, J. A. Farberg and C. A. Austin, Hilda Murphy and Esther Clarke, Si Austin and C. A. Ford; Robert Hall and Robert Frich.

JUST A REMINDER that the Monday evening tournament at The Birmingham Community House is now closed for the summer and will re-open in September and that Hilda Murphy's Thursday evening tournament at the Birmingham YMCA is now being held Monday evening for the balance of the summer. This game will move back to Thursday with the re-opening of the game at The Community House.

Tomorrow starts the Nationals

Writer

(Continued from 1-D)

visited seed-growing farms of many members of the American Seed Trade Association from Colorado through California to Washington, and attended the annual meeting of the group.

Immediately after the AAN meeting in Boston, she left for the meeting of the Garden Writers' Association in Chicago. Following that she will return to the east coast for another horticultural meeting and to work on the publication of her book on shrubs with D. Van Nostrand Co. of Princeton, N. J.

at Toronto, Canada. This tournament will run through August 2. There are championship games and side games each afternoon and evening. Hope to write your name in this column as a winner at Toronto.

SOUTHERN MICHIGAN'S winners game for August will be held at the St. Clair Recreation in St. Clair Shores at 6:30 p.m. Aug. 16.

Two wonderful summer resort-type of bridge tournaments will be held in August—Greenbush, Mich., and Cleveland, O.

Bloomfield Hills Boy Earns Red Ribbon From Guild of Music

Norman Fleece, 12, son of Mr. and Mrs. Charles Fleece, 2099 Lone Pine Road, Bloomfield Hills, was awarded a red ribbon and a rating of excellent at the national tournament of the American Guild of Music July 13-16 in Louisville, Ky.

Young Fleece, an accordionist, played "Sonata Pathique," first movement, 13th opera, by Beethoven. There were 1,420 solos presented at the competition.

THE BLOOMFIELD HILLS boy previously received a first place trophy for accordion in the regional competition, covering Illinois, Indiana, Ohio and Michigan. His selection was Mendelssohn's "Concerto in E minor."

He also won a talent show last year at Berkshire Junior High School.

A feature of the first Sunday of the 115th annual Michigan State Fair will be the annual Sunrise Service at 8 a.m. The fair runs from Friday, Aug. 28 through Monday, Sept. 7.

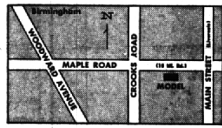
GRAND OPENING **IMMEDIATE OCCUPANCY**

Nearly 1,000 sq. ft. of spacious living area in these beautiful 2-bedroom sound proofed apartments. Fireplace in Full Bricked Wall. Close to Birmingham Shopping—only minutes from Detroit

NEW ENGLAND PLACE APARTMENTS

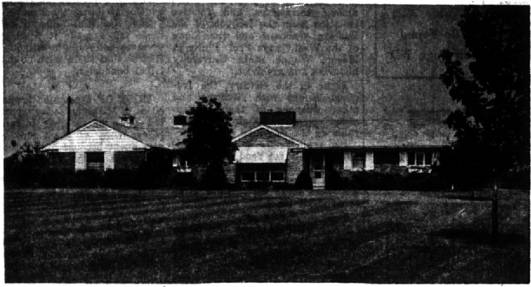
Included at a moderate rental are Heat, Air Conditioning, All Appliances including Dishwasher by Hotpoint, Individual basements, separate Entrance Foyer in each Apartment.

A. D. Becker
Building Company



727 MAPLE RD. 588-4940 FURNISHED MODEL OPEN 10 A.M. - 8 P.M. Daily & Sat.

HILLTOP SITE



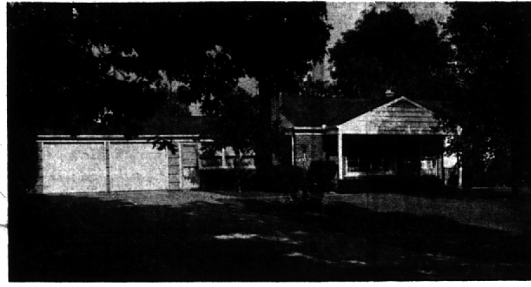
Sweeping views in all directions, including Island Lake and Kirk-in-the-Hills. A comfortable, inviting, and substantial home, custom built, for the owner. You'll appreciate its evident quality and superb maintenance. All rooms graciously proportioned; three bedrooms, living room, family room, farm kitchen, 1½ tiled baths, two fireplaces, 2½ car plastered garage, large covered porch. \$29,750

ROUGE RIVER RAVINE



Transportation a problem? — not here. In the heart of town yet secluded. A bi-level plan with views through the trees of the winding river. Two bedrooms and bath up, two additional bedrooms and bath on lower level. Living room and kitchen up; family room and screened porch down. A flexible plan that would adapt to varying needs, and a location that offers privacy. \$37,500.

PRIVILEGES ON WING LAKE



You and your family will enjoy the nearness of the beach these warm summer days. And a sizeable family it can be too, for there are four bedrooms, two baths, 14x24 paneled Family Room, "pretty" living room, dining room, large kitchen, covered patio and beautiful treed lot. Being "L" shaped the house is far larger than it looks. \$31,000.

BIRMINGHAM C. C. VIEW



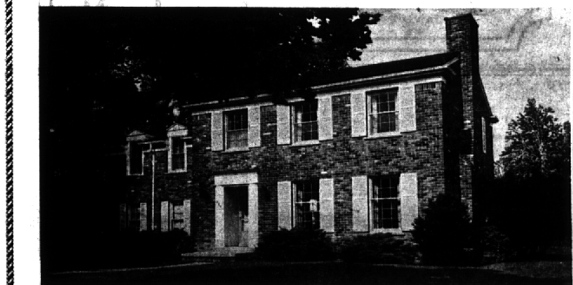
A house that "grew" and did so charmingly. The addition of a cherry, paneled Family Room extended its warm livability. Three bedrooms, 1½ baths, living room, dining "L", full basement with rec. room and an office lined with bookshelves. Close to schools, on a quiet street with an uninterrupted view of the rolling fairway. \$29,500.

FRONTAGE — UPPER STRAITS LAKE



Sit in the lanai room with us and enjoy the view of sparkling water and spreading shade trees — or, for that matter, help with the dishes and be entertained by water skiers and swimmers! A completely delightful house, carefully planned for the site. Living room 28x15.6, lanai room 18x18 with slate floor, delightful farm kitchen, two large bedrooms and bath, full basement, completely paneled, with rec room and third bedroom and bath. Patios at the house and one on the shore. You'll love it. \$42,500.

BE FIRST TO SEE — UNUSUAL VALUE



- Bloomfield Village
- Immediate Occupancy
- 4 Bedrooms
- Formal Dining Room
- Paneled Recreation Room with Bar
- Enclosed Yard
- Summer Porch
- Carpeting, Draperies



- Unusual Construction
- Beautiful Country Area
- 4 Bedrooms
- Separate Dining Room
- Family Room
- Kitchen with Built-Ins
- 2 car heated garage

Have You Seen our Home on Orchard Lake?



FRED PIERCE INC.
460 NORTH WOODWARD, BIRMINGHAM, MICH.
Midwest 7-1414

MAX BROOCK INC.
1895 — 1964
300 S. Woodward
Open daily 9-8
Saturday 9-5

MEMBER REALTORS NATIONAL ASSOCIATION OF REALTORS

MI 4-6700