

SALE

SEMI-ANNUAL CLEARANCE
 Selective Group of distinctive
 Clothing, Sportswear, Furnishings
 NOW REDUCED, many from our
 most CELEBRATED lines . . .

20% to 50% Savings

FRENCH SHRINER SHOES
 for gentlemen . . .
 NOW REDUCED!

Jerry Morse
 GENTLEMEN'S ATTIRE

NORTHLAND, LOT G . . . Open Mon., Thurs., Fri., Sat. to 9 . . . EL 7-3782

This Week's TV Listings

(Continued from Preceding Page)

7:30 (2) Favorite Martian
 (4) Disney
 (7) Summer Olympic Trials
 8:00 (2) Ed Sullivan
 8:30 (4) Grindl
 (7) Arrest and Trial
 9:00 (2) Naked City
 (4) Bonanza
 (9) Viewpoint
 9:30 (9) Chorus Anyone
 10:00 (2) Candid Camera
 (4) Dupont Show—"The Takers"
 (7) Summer Olympic Trials
 (9) Second Look
 10:30 (2) What's My Line
 (9) Question Mark
 11:00 (2) News, Weather, Sports
 (4) News, Weather
 (7) Movie—"Death of a Salesman," "Frontier Gal"
 (9) News, Weather, Sports
 11:30 (9) Starlight Theater
 11:25 (2) Movie—"It's Always Fair Weather"
 11:30 (4) Thriller—"Man of Mystery"
 12:30 (4) Groucho Marx
 1:00 (4) News
 1:10 (2) With This Ring
 1:30 (2) News
 1:35 (2) Meditations

MONDAY, JULY 27

6:15 (2) Meditations
 6:30 (2) Farm Front
 6:35 (2) News
 6:30 (2) Summer Semester
 (4) Classroom
 (7) Funews
 7:00 (2) News
 (4) Today
 (7) Ginger
 7:10 (2) Fun Parade
 7:25 (4) Today on Farm
 7:30 (4) Today
 8:00 (2) Capt. Kangaroo
 (7) Circus Boy
 8:30 (7) Movie, "Special Delivery"
 9:00 (2) Movie—"Big Sky"
 (4) Lingo
 9:30 (9) Jack La Lanne
 10:00 (4) Make Room for Daddy
 (7) Girl Talk
 (9) Robin Hood
 10:30 (2) Lucy
 (4) Word for Word
 (7) Price Is Right
 10:45 (9) Movie—"Hell Drivers"
 11:00 (2) McCoys
 (7) Get the Message
 (4) Concentration
 11:30 (2) Pete and Gladys
 (7) Missing Links
 (4) Jeopardy
 Afternoon
 Noon (2) Love of Life
 (4) Say When
 (7) Father Knows Best
 (9) M'selle de Paris
 12:30 (2) Search for Tomorrow


(4) Truth or Consequences
 (7) Ernie Ford
 (9) People in Conflict
 1:00 (2) December Bride
 (4) News, Eliot, Gamble
 (7) Movie, "Doll Face"
 (9) Kennedy—"I Found Stella Parish"
 1:30 (2) As the World Turns
 (4) Let's Make a Deal
 1:55 (4) News
 2:00 (2) Password
 (4) Loretta Young
 2:20 (7) Pat Morris
 2:30 (2) Hennessey
 (4) Doctors
 (7) Day in Court
 3:00 (2) To Tell the Truth
 (4) Another World
 (7) Genl. Hospital
 3:15 (9) News
 3:30 (2) Edge of Night
 (4) You Don't Say
 (7) Queen for a Day
 (9) Vacation Time
 4:00 (2) Secret Storm
 (4) Match Game
 (7) Trillmaster
 4:25 (4) News
 4:30 (9) Popeye
 (2) Early Show—"Gunfighter"
 (8) Mickey Mouse
 5:00 (4) Perrot Presents
 (7) Movie, "Siren of Baghdad"
 5:55 (2) Morgus and weather
 (4) Duvall

Evening
 6:00 (2) News
 (8) News, feature story, weather and sports
 (7) Deadline
 (9) Magilla Gorilla
 6:30 (2) Cronkite
 (4) Huntley-Brinkley
 (9) 8th Precinct
 7:00 (2) Highway Patrol
 (4) Discussion
 (7) Adventures with Cooper
 7:30 (9) Movie—"Naughty But Nice"
 (2) To Tell the Truth
 (4) Monday Night at Movies
 "Imitation Genl."
 (7) Outer Limits
 8:00 (2) I've Got a Secret
 8:30 (2) Vacation Playhouse
 (7) Wagon Trail
 9:00 (2) Danny Thomas
 (9) Inquiry
 9:30 (2) Andy Griffith
 (4) Hollywood and Stars
 (9) Explorations
 10:00 (2) E. Side/W. Side
 (4) Sing Along With Mitch
 (7) Breaking Point
 (9) Finlay Casebook
 11:00 (2) News, editorial, weather
 (4) News, Weather, Sports
 (7) News
 (9) News, nightcap
 11:30 (2) Steve Allan
 (4) Tonight, Carson
 (7) Movie, "Haman Jungle"
 (9) Movie—"Captain of the Clouds"
 (Continued on Next Page)

4-CC THE BIRMINGHAM (MICH.) ECCENTRIC July 23, 1964

RIDE YEAR 'ROUND INDOORS & OUTDOORS
 CLASS & PRIVATE INSTRUCTION
 FLAT & JUMPING · TRAINING · BOARDING

The only reason more people don't ride is that they've never had the opportunity to learn—PROPERLY

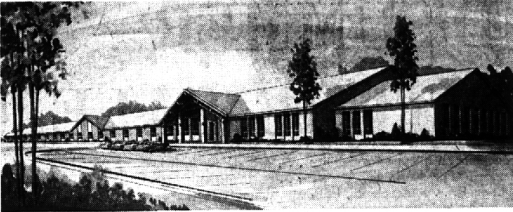


at Centaur we put the PRO in Properly

LOCATED IN WEST BLOOMFIELD TOWNSHIP
CENTAUR FARM STABLES
 ADDRESS: 5600 DRAKE ROAD, WALLED LAKE, MICH.
 626-9222
 ANTHONY B. PRATT, GENERAL MANAGER

RESTAURANT & SODA BAR · COMPLETE SERVICE

Accredited by the National Council of Nursing Homes as an Intensive Care Unit



For the Ultimate in Care

The newest and finest Convalescent and Nursing Home in the Detroit area offers professional care in a surrounding of warmth and beauty, lending an atmosphere of a home away from home—at reasonable rates.

We invite you to visit us anytime or phone Mrs. Serwin, Administrator, 357-5533

SOUTHFIELD NURSING HOME

26051 Lahser Rd.
 1 block West of Northwestern Hwy.
 Southfield, Michigan

- 100 private and semi-private rooms with bathrooms
- Hospital adjustable beds
- Luxurious lounges
- Finest foods and spacious dining room
- Barber and beauty shop
- Physical therapy, also Occupational Therapy, Rehabilitation program
- Your physician welcome
- Registered nurses on 24-hour duty
- Nurses call system for every room
- Attending physician daily
- Non-denominational chapel

TECO AUTOMATIC WHEEL BALANCERS

TECO BALANCERS GIVE A SMOOTHER SAFER RIDE . . . which is absolutely impossible to achieve with conventional balancing techniques.

CONVENTIONAL BALANCING METHOD NOT ENOUGH . . . Conventional methods balance a wheel under a single artificial condition. Many factors are at work to change the balance of a wheel as it rolls down the road carrying your car . . . Speed changes it's diameter, tires ripple and Hex, chug holes distort the circle, power and load change the shape.

TECO SOLVES THE PROBLEM . . . by constantly rebalancing the wheels as they roll, and giving you a safer, smoother ride, plus reducing expensive tire wear. Teco Space-age Automatic Wheel Balancers are a simple, fool-proof device, which brings you a new level of driving comfort and economy never before possible! Each Teco Balancer is a simple tubular plastic hoop, containing high-grade chrome-steel balls in a special fluid. Nested securely within the inner rim of each wheel, Teco Balancers are constantly in action, keeping the wheels balanced with every revolution . . . canceling out the vibrations which cause passenger discomfort, driver fatigue and expensive tire wear.

There are sizes for all cars, even imports . . .

Set of 4 . . . installed . . . only 30 min. . . with road hazard guarantee

Ask your Dealer
PATTERSON CHEVROLET CO.
 1000 S. Woodward
 MI 4-2735

HAROLD TURNER, INC.
 464 S. Woodward
 MI 4-7500

WILSON PONTIAC-CADILLAC, INC.
 1350 N. Woodward
 MI 4-1930

TECO DEALERS OVER THE NATION . . .

BALANCE WHILE YOU DRIVE

MORRIS IS MOVING! City of Birmingham Licensed Sale!

PRICE SLASHED

EVERY ITEM SACRIFICED. SAVE TO 50%.. 60% YES, EVEN MORE!

SUNBEAM AND OTHER FINE FAMOUS MAKE Power Mowers MUST GO!

Come look 'em over! While our present stocks last, you can make the buy of a lifetime. Every one is fully guaranteed. We'll be available at our 12 Mile-Campbell Rd. location to back up our iron clad guarantee of satisfaction.

NOW as low as \$33 While They Last

GARDEN TOOLS AND EQUIPMENT. ALL GIVE-AWAY PRICED!

Come In And Browse!
 You'll find dozens of items that are useful and worthwhile going at prices that are nothing short of sensational . . . in fact . . . we'll let you name your own price just so we don't have to pay to move them!

ENTIRE STOCK OF TOYS
 Now . . . 1/2 OFF LIST PRICES
 Every Famous Brand Goes!

It's the bargain opportunity of a lifetime. Morris . . . one of greater Detroit's leading toy outlets . . . sacrificing thousands of famous brand toys without regard to cost or loss. Look ahead . . . buy now for future needs . . . for birthdays . . . for Christmas . . . for every occasion. You'll never again see the equal of these sensational prices. Toys include games . . . dolls . . . trucks . . . mechanical toys . . . every famous toy you can think of is included while existing stocks remain. Hurry . . . don't miss out!

\$3 TOYS . . . Now \$1.50
\$2 TOYS . . . Now \$1.00
\$1 TOYS . . . Now 50c

ALL BAR-B-Q'S MUST GO

Big ones . . . little ones . . . round ones . . . square ones! Every style is going at prices that are almost unheard of. Every one fully Guaranteed.

Values to \$55 Included!

Some Now Only **\$12.88**

Bar-B-Q Tools
 79c values **38c**

STOCK UP ON ALL PICNIC NEEDS!
 Save 1/2 Plenty!

Bar-B-Q Tools
 79c values **38c**

Give-Away Prices On Our Entire Stock Of

CAMERAS And Photo Equipment

8 MM MOVIE CAMERAS	35 MM CAMERAS	8 MM ACTION EDITOR VIEWERS
from just \$9.95	Just \$18.80	from \$11

Reg. \$9.95
1/4" Drill
Now \$6.66

CHARCOAL BRICKETTES 44 c 10 lbs. Bag

While They Last Full Size

ALUMINUM STORM SCREEN DOOR
 Complete **\$15**

Samsonite Deluxe \$9.95
Chairs \$4.95

Hardwood Sturdy SAW HORSES
 Set of 4 **\$196**

ALL POWER TOOLS REDUCED!
 Power Saws . . . Solder Guns . . . Drills
 Jig Saws . . . Plus Hand Tools Priced for Sell Out!

9 to 9 DAILY SUN. 10 to 5

MORRIS
 THE QUALITY DISCOUNT STORES

735 S. WOODWARD
 at HUNTER, Birmingham