

# Garden Sings of Summer Moods

If you have fallen in love with a friend's garden, you will enjoy returning many times during the summer to observe the garden's different moods. Yes, moods. In the early spring the garden might "shout," "Come dance through the tulips with me."

Other times a garden will bring forward a feeling of peace, while in the fall when the mums are in full color the garden seems to say, "Don't forget me; return in the spring."

Lovers of fine music return time after time to hear the same rendition of a piece from various interpreters, and so in the world of gardens, we enjoy returning at different cycles to enjoy the different moods as expressed by color.

This week I returned to a favorite garden and saw the largest, sturdiest shasta daisy I have ever



Mrs. Burlingame

seen—T. E. Killen. When you are planting this accent in your perennial garden, don't settle for those small, little leaf daisies which are pulled from a field and sold to you.

Golden regalia was another gem. It was a beautiful specimen with a sturdy stem with an abundance of pale gold bells.

Around an inviting path was the yellow day lily, *Kindly Light*; it had long, long petals which were yellow.

An interesting garden in the area is that of Frank Voorheis at 681 Bennington Road, Birmingham. The upper level of the garden is a picturesque terrace and lawn area. Then you travel down to the lower level which is being developed as a bird sanctuary. As you view the total garden you want to exclaim, "How peaceful!"

A STUNNING DETAIL on the upper level is a dark lead figure placed majestically amid a blanket of vivid coral colored geraniums. This is the view you see upon coming up the driveway. By the way, are you ever inspired by that first view you see before getting out of your car as you come home beat by traffic and pressures!

There was music piped outdoors, coming from a patio lamp. Stones of large sizes were used to accent and form a composition near trees, as well as to edge the boundary of the property. Everything seen was "so right."

**EVEN THOUGH** at this date we are in the middle of the growing season, it is the time to be alert as to the value of trees, shrubs and perennials. Toss out those plants which do not "pay their freight" by good performance.

After all, the square footage in your garden should be always in a state of flux to provide the most for the beauty of your total property. Battle the garden tools, and constantly be making changes in design and location of plants.

**SOME OF YOU** have some pretty sick looking trees. You can buy or rent a root feeder. The feeding roots are located in an area that extends from the outside drip branches half the distance inward to the trunk.

Using a feeder, you insert the cartridges to feed at 6 feet intervals. This same feeding mechanism can also be used for special root feeding care for roses.

Irritation to eyes which swimmers sometimes experience is not due to chlorine, but by excess water acidity. It can be corrected by the proper water treating chemical.

## Dressed-Up Cake Mix

With all the convenience foods on the market today, life in the kitchen is becoming more fun and less work.

One convenience food that has been a boon to homemakers is cake mix. However, variety in food is still essential for appealing meals.

Cherry Kuchen is a delightful change from the ordinary cake, yet still employs the ordinary cake mix. This rich dessert has endless possibilities.

**USING THE SAME BASE** and the same rich topping, you can change the filling to suit the likes of your family.

Although cherry pie filling is used here, you might like to experiment with sliced peaches, sliced pineapple or even apple pie filling.

**CHEERY KUCHEN**  
1 package white cake mix (dry) 1/2 pound butter

## Cotton Knits Shrink

All cotton knits may shrink a little, say clothing specialists. A highest quality T-shirt may shrink as much as five per cent, but it will shrink evenly. Some retailers frankly recommend clothes of knitted fabrics one size larger especially if you plan to dry them in a tumbler dryer.

1 1-pound can cherry pie filling  
1/2 cup sugar  
1 egg, beaten  
Crumble cake mix and butter together until mixture resembles coarse corn meal. Pat mixture into 13 x 9 x 2 inch pan. Bake at 350° for 15 minutes, or until lightly brown. Cool.

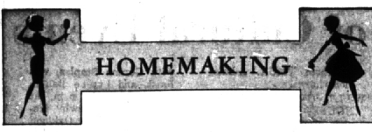
Spread cherry filling over cake. Mix sour cream, sugar and egg together. Spread over cherry filling. Bake at 350° for 30 minutes or until sour cream topping is set.

## Bachelors Not So Dull After All

Somewhere between loving mother and eager bride exists bachelorhood. According to legend, bachelors can't boil water, don't understand color, fabric and such and therefore exist in dull, colorless surroundings badly in need of those feminine touches.

Or so women tell themselves. In reality, the bachelor of '64 is likely to be a gourmet cook, housing himself in a chic, comfortable apartment. The same is true of his female counterpart, the single career girl.

Unmarried, now enjoying more economic and social freedom, spend much of their time and money in their homes, temporary though



## HOMEMAKING



Set for Sun

## America Says Hot Dog!—For Hot Dogs

If you say "Hot Dog!" for hot dogs, you're not alone. Last year Americans ate about seven billion hot dogs ranging in size from the single-bite cocktail frank to the foot long model.

All hot dogs are fully cooked, smoked sausages, packed with food value and flavor. They differ according to what's inside.

"ALL BEEF" FRANKS contain no meat other than beef. "All meat" hot dogs contain beef and pork but no fillers. "Regular" franks, according to Michigan law, can have up to four per cent milk solids added to the meat.

The label tells the story, and the price adds a post-script. All beef franks are highest in price, followed by all meat, and then regular franks. Another factor influencing price is the type of casing on the hot dog. Natural casings are more expensive making the cost-per-pound somewhat higher than that for "skinless" franks.

**ALTHOUGH HOTDOGS** are thoroughly cooked before you buy them, they are perishable. Store them in the refrigerator and use within a week. This is a good rule to apply to all members of the sausage and coldcut family.

## Dieters' Dressing

Summer dieters will enjoy this tanga low-calorie salad dressing.

Into electric blender put 2 tbs. chopped onion, 1/4 cup tomato sauce, 1 tsp. Worcestershire sauce, 3 tbs. lemon juice and 1/2 tsp. celery salt. Combine ingredients until smooth, about 15 seconds. Yield: 8 cup dressing. Use one tablespoon per serving at only 5 calories.

# Michigan Answers Vacation Question

Where to go on a vacation—the mountains or the seashore? That age-old question which once supplied the plot for many a situation comedy has now been answered.

The answer as far as millions of vacationers are concerned is Michigan, and it was supplied in part by intensive tourist promotion, according to the Automobile Club of Michigan.

"THANKS TO THIS type of promotion, along with other factors such as Michigan's vast freeway system and increased accommodations, the Wolverine state now ranks as a leader in the big business of tourism," said Jerry E. Fisher, Auto Club touring manager.

Although 1963 was a record year for Michigan's tourist industry, all indications point to an even greater year this season. Interviews with tourist association officials around the state bear this out only too well.

William McGraw, manager of the Michigan Tourist Council in Lansing, said that travel inquiries into his office are up by more than 25 per cent as compared to last year.

"THIS IS AN all-time record," McGraw said, "and points to what should certainly be a terrific season."

In Grand Rapids, Audrey Strohpaul of the West Michigan Tourist Association echoed McGraw's feelings. "By early spring we had received a total of 6,300 requests for literature on vacations in west Michigan."

Of this amount 2,700 asked for specific information on cabin, cottage and motel accommodations, while 400 others wanted information on camping facilities, Strohpaul said.

**REQUESTS FOR travel information** have also been pouring into the East Michigan Tourist Association office in Bay City. Manager James Hall told the Auto Club that a "tremendous increase" in inquiries has been noted with many persons requesting information on restored historical sites.

Hall also said that the greatest percentage of inquiries have been received from out of state. "Requests for information from Michigan residents," Hall said, "have totaled 40 per cent, while the states of Ohio, Illinois, Indiana, Pennsylvania and New York have accounted for 50 per cent."

**THE EAST MICHIGAN** tourist official added that other inquiries have ranged from such widely-separated states as Florida, Missouri, California, New Jersey and the Canadian provinces of Quebec and Ontario.

This keen out-of-state interest was also evident when the Auto Club talked to Ken Dorman, the executive-secretary of the Upper Michigan Tourist Council at Marquette.

"Our inquiries have increased by 25 per cent over last year," said Dorman, "with most of the increase coming from other states. Although Michigan vacationers seem to be traveling out of state to such sites as the warm, man-made lakes of Kentucky, the slack is being taken up in other areas."

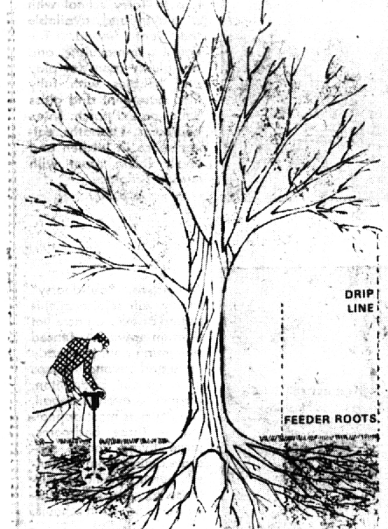
"MICHIGAN STILL seems to hold its magic as an outdoor wonderland for millions of vacationers across the country," added Dorman.

In Detroit, Lew Thompson, manager of the Southeast Michigan Tourist Association, told the Auto Club that inquiries into his office, too, have showed a marked increase over last year.

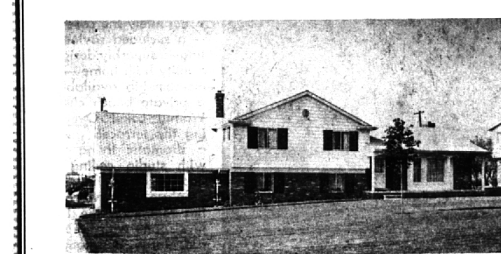
"There is a definite rebirth of tourism under way in southeastern Michigan. Our members have come to the realization that tourism means more than accommodations and restaurants—important as they are."

"WITHOUT ATTRACTIONS," Thompson said, "hotels and restaurants are little more than stopping-off places. With attractions such as our area is now starting to develop, vacationers stay longer and go home much happier."

This wealth of optimism, notes the Auto Club, adds up to one conclusion: the outlook for Michigan's tourist industry seems to grow brighter with each passing year. If the weather cooperates, this year will be no exception.



METHOD USED TO ROOT-FEED A TREE  
Feeder nourishes the tree and aerates packed soil.



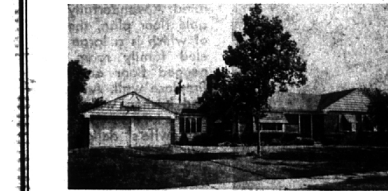
**IN THE DELLS OF BLOOMFIELD HILLS**—This 1962 built is better than new. Quad-level with four large bedrooms and 2 1/2 bathrooms. Huge paneled family room with fireplace and built-in refreshment bar. Built-in oven, range, dishwasher and disposal. Sprinkling system. QUICK POSSESSION.



**YOU'LL ENJOY GILBERT LAKE PRIVILEGES** with this three bedroom home. Large family room with second fireplace. Jalousied, heated porch. Many built-ins. Carpeting and draperies included. Burglar and fire alarm system. Immediate possession so you can enjoy SWIMMING NOW! \$36,900.



**NOW IS THE TIME TO MOVE TO BLOOMFIELD HILLS.** Four spacious bedrooms with two bathrooms plus two lavs. Large dining room. 27' family room. Lovely kitchen with built-ins. Many deluxe features we would love to show you. Near CRANBROOK on wonderful high site with spectacular views.



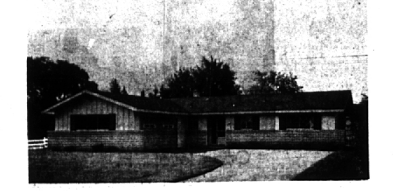
**IN BEVERLY HILLS ON BEAUTIFUL LOT.** Three bedrooms and 2 1/2 bathrooms. Dining room and 26' family room. Two fireplaces. Humidifier. Paneled recreation room plus children's playroom in basement. Fenced yard. Extras include 18' cedar closet, carpeting and draperies, \$33,500.



**IT'S REALLY TRUE!** 3 bedrooms and 2 baths. Separate dining room. 20' paneled family room. Fireplace. Spare room (14.2 x 10) on second floor. Air-conditioner. Wonderful neighborhood, near shops and schools. ALL THIS FOR \$20,900. DON'T WAIT —It's vacant, you can move right in!



"THE FIFTEEN HOUSE"—15 foot dining room, three 15 foot bedrooms, 15 foot wide recreation room (32 feet long), 15 foot kitchen, 15 foot square family room. Tremendous value, quality construction throughout. BEAUTIFUL HOME IN BEVERLY HILLS.



**EXTRA SHARP**—one year old California ranch in superb condition. Three bedrooms. Living room with fireplace. Large kitchen with built-in oven and range. Complete with carpeting, draperies, intercom and black-top drive for \$24,950.00.

# Weir, Manuel & Snyder, Inc.

298 South Woodward Birmingham 644-6300  
Birmingham, Michigan Realtors Phones: From Detroit 566-2323