

# Herd

(Continued from 1-D)

right-of-way, 10 year saga. He found it much improved, and even the children after all our backroads mountain driving were not overly impressed with its difficulty.

**OUR TRIP** 1,000 feet down via a wiggly elevator into the lowest level of the famed Molly Kathleen Gold Mine was an exciting and informative venture.

Our guide, a miner of some 40 odd years, thrilled the children when he used hand tools to mine silver bearing ore souvenirs for us. When he briefly demonstrated a power drill, Craig almost jumped out of his skin.

We could understand why miners in spite of stuffing their ears with cotton become somewhat deaf. This wonderful old gentleman had donated his personal collection of mining lamps from his first candle light to his retiring high powered battery operated lamp to the Cripple Creek Historical Museum.

**WE DIDN'T TAKE** the Pike's Peak road as doubts were covering the peak. Phil, having road-tested cars here years ago, holds an unofficial record-of-sorts for rapid descent.

Then came the three long days of driving home. Across the plains of eastern Colorado and northern Kansas we met numerous convoys of trucks carrying threshing equipment. The symbolic grain elevators reaching for the sky provided the only break on the horizon.

Our first homebound traveling day was hot. We especially felt the heat after the coolness of the mountain altitudes. At Alexandria Lakes State Recreation Area in southwestern Nebraska, our overnight stop, many fishermen were using lanterns and spotlights which are illegal practices in Michigan.

**OUR 460 MILE** day through the pleasant verdant rolling hills of Iowa was cooler. By this time we were feeling much like the placid cows in the fields.

We noted how much better maintained are the farm yards and outbuildings here as contrasted with those in the desert and mountain areas.

A grandstand erected on a street facing the town square in Winter-set, Iowa, on July 4 reminded me of Centennial Day in Birmingham. Weather and crowds were similar while the performers were local musical talent instead of lovely fashion models.

**AS WE FILLED** into our driveway, Suzy's dearest friend, Peggy Sitta, rushed to greet her saying, "I've been watching for you for three days."

Within an hour we were unpacked and the children renewing old acquaintances while Phil and I read the accumulation of mail from which the children had eagerly extracted their report cards. On our last traveling day Leigh, day-to-day keeper of expenses, had totaled the expenses for our 6,500

# Calendar of Cultural Events

Thurs., July 16  
**THE RAVEN GALLERY**—Folk singers Mike and Judy Callahan at 9:30 p.m. at 136 Brownell, Birmingham. Admission charge.  
**SUMMER STUDENT SHOW**—Work by eight departments of Cranbrook Academy of Art at Cranbrook Galleries, Bloomfield Hills, Tues.-Fri. 2-6 p.m.; Sat.-Sun. 1-5 p.m. Through mid Sept. Admission charge.  
**BLOOMFIELD ART ASSOCIATION**—Exhibition by Nellie Mehta Sethna through Sunday at Birmingham Art Center. Hours 2-5 p.m. Tues.-Sun.  
**LITTLE GALLERY**—Group show celebrating gallery's 14th anniversary. Work by Joseph DeFrancesco, Laura Lawler, Edward Pracukowski and Martha Slaymaker. Through July 25. Hours 9 a.m.-6 p.m. Tues.-Sat. at 915 E. Maple Birmingham.

**OU GALLERY**—Exhibition of works by Yugoslav painter Ljubo Biro, at Oakland University, Rochester. Hours 12:30-4 p.m. Mon.-Fri. and 2-5 p.m. Sun. Through July 27.

**BIRMINGHAM THEATRE**—"The Bedtime Story" and "A Gathering of Eagles." Through Tuesday.

**BLOOMFIELD THEATRE**—"The Patsy" and "Son of Captain Blood." Through Tuesday.

Fri., July 17  
**BLOOMFIELD ART ASSOCIATION**—Homi Sethna shows his documentary films of various aspects of Indian life and culture at 8 p.m. at Birmingham Art Center.  
**WILL-O-WAY PLAYHOUSE**—Apprentice Theatre presents drama "All the Way Home" at 8:40 p.m. at the playhouse in Bloomfield Hills. Admission charge.

**THE RAVEN GALLERY**—Folk singers Mike and Judy Callahan at 9:30 p.m. at 136 Brownell, Birmingham. Admission charge.

**BRIDGE**—Birmingham Bloomfield Area Bridge Club at 7:45 p.m. at Birmingham YMCA.

Sat., July 18  
**HOOTENANNY**—From 7:30-11 p.m. at the Bir-

mingham YMCA. Admission charge.  
**WILL-O-WAY PLAYHOUSE**—Apprentice Theatre presents drama "All the Way Home" at 8:40 p.m. at the playhouse in Bloomfield Hills. Admission charge.  
**THE RAVEN GALLERY**—Folk singers Mike and Judy Callahan at 9:30 p.m. at 136 Brownell, Birmingham. Admission charge.

Sun., July 19  
**BLOOMFIELD ART ASSOCIATION**—Exhibition by summer session students at Birmingham Art Center, 1515 S. Cranbrook Rd. Hours 2-5 p.m. Tues.-Sun. through Aug. 15.

**WILL-O-WAY PLAYHOUSE**—Apprentice Theatre presents drama "All the Way Home" at 8:40 p.m. at the playhouse in Bloomfield Hills. Admission charge.

**THE RAVEN GALLERY**—Folk singers Mike and Judy Callahan at 9:30 p.m. at 136 Brownell, Birmingham. Admission charge.

Mon., July 20  
**BRIDGE**—Birmingham Duplicate Bridge Club at 7:45 p.m. at Birmingham YMCA.

Tues., July 21  
**BRIDGE**—Birmingham Duplicate Bridge Club at 12:30 p.m. at home of Mrs. Stuart Murphy, 2424 Manchester, Birmingham.

**CHILDREN'S STORY HOUR**—At 10:30 a.m. at Troy Public Library in Troy High School.

**THE RAVEN GALLERY**—Folk singer Josh White, Jr., at 9:30 p.m. at 136 Brownell, Birmingham. Admission charge.

**THE RAVEN GALLERY**—Folk singer Josh White, Jr., at 9:30 p.m. at 136 Brownell, Birmingham. Admission charge.

Wed., July 22  
**BRIDGE**—Birmingham Bloomfield Area Bridge Club at 7:45 p.m. at Birmingham YMCA.

Thurs., July 23  
**MEADOW BROOK MUSIC FESTIVAL**—Detroit Symphony Orchestra concert

with Gordon Staples, violinist, and Italo Babbini, cellist, at 8:30 p.m. at Howard C. Baldwin Memorial Pavilion, Oakland University, Rochester. Admission charge.  
**THE RAVEN GALLERY**—Folk singer Josh White, Jr., at 9:30 p.m. at 136 Brownell, Birmingham. Admission charge.

Fri., July 24  
**MEADOW BROOK MUSIC FESTIVAL**—Detroit Symphony Orchestra concert with Gordon Staples, violinist, and Italo Babbini, cellist, at 8:30 p.m. at Howard C. Baldwin Memorial Pavilion, Oakland University, Rochester. Admission charge.

**WILL-O-WAY PLAYHOUSE**—Apprentice Theatre presents drama "All the Way Home" at 8:40 p.m. at the playhouse in Bloomfield Hills. Admission charge.

**THE RAVEN GALLERY**—Folk singer Josh White, Jr., at 9:30 p.m. at 136 Brownell, Birmingham. Admission charge.

Sat., July 25  
**MEADOW BROOK MUSIC FESTIVAL**—Detroit Symphony Orchestra concert with Gordon Staples, violinist, and Italo Babbini, cellist, at 8:30 p.m. at Baldwin Memorial Pavilion, Oakland University, Rochester. Admission charge.

**WILL-O-WAY PLAYHOUSE**—Apprentice Theatre presents drama "All the Way Home" at 8:40 p.m. at the playhouse in Bloomfield Hills. Admission charge.

**THE RAVEN GALLERY**—Folk singer Josh White, Jr., at 9:30 p.m. at 136 Brownell, Birmingham. Admission charge.

**WILL-O-WAY PLAYHOUSE**—Apprentice Theatre presents drama "All the Way Home" at 8:40 p.m. at the playhouse in Bloomfield Hills. Admission charge.

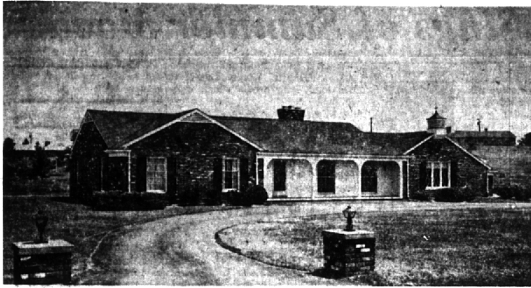
Sun., July 26  
**WILL-O-WAY PLAYHOUSE**—Apprentice Theatre presents drama "All the Way Home" at 8:40 p.m. at the playhouse in Bloomfield Hills. Admission charge.

**THE RAVEN GALLERY**—Folk singer Josh White, Jr., at 9:30 p.m. at 136 Brownell, Birmingham. Admission charge.

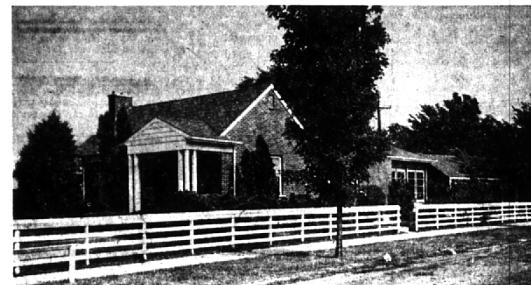
mile three and a half week vacation. She figured a total trip expense of 672 dollars broken down as follows:  
lodging for four nights \$ 65  
meals out, including tips 150  
campground and park entrance fees 6  
groceries 90  
ice for coolers 6  
laundry 4

Indian handicrafts—rug, 120  
batteries, basketry 35  
books and pamphlets 30  
jeep trip 30  
mibe tour 5  
miscellaneous 5  
car expense 386  
386 gallons of fuel 131  
truck, oil, filter, wash 20  
highway tolls 5  
As dusk came we found our-

selves groping our way around the house. We laughed as we redid the case of turning on the lights.  
We are looking forward to next summer when the National Model Railroad Association meets in Vancouver. We plan to camp to the Pacific northwest, the only section of our country that we haven't visited.



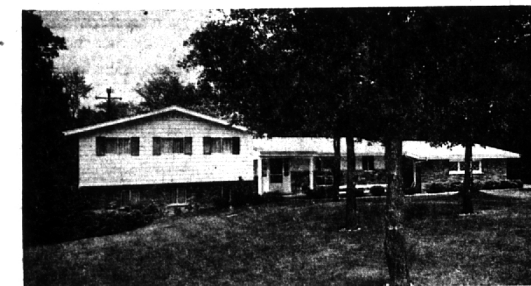
You'll enjoy the view as much as the liveability and charm of the house. Overlooking Meadow Lake, on a quiet street. The excellent floor plan includes three twin-size bedrooms, two tile baths, gracious living room, and inviting family room, 2 fireplaces, a work-easy kitchen with built-ins, large 22x36 garage. Well maintained and available for immediate occupancy. \$35,000



Tired of worrying about Johnny and Susie getting to and from school? Not here!—it's a skip and a hop to Torry school with a playground available the year 'round. The house is immaculate, and has plenty room for play and hobbies with fully tiled basement and glass enclosed porch. Three bedrooms, 1 1/2 baths, eating space in kitchen and lovely living room with marble fireplace. \$18,700



An active, "out-doorsy" family will rejoice in this setting of over an acre yet right in town. A fenced swimming pool is already there and beyond it heaps of room for badminton, croquet — even basketball. The house is most appealing — three bedrooms, large living room, separate dining room, screened porch. Walking distance to shops and Midvale and Seaholm schools. \$28,500.

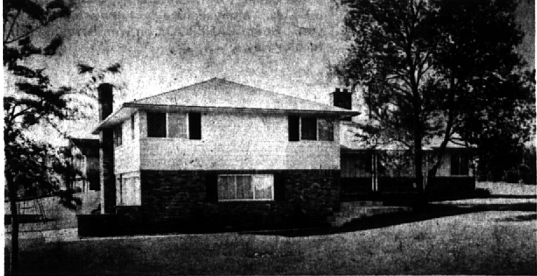


All this and heaven too, is definitely the case here — a secluded ravine setting — a superbly designed, quality built home — and membership available in a private beach club on Walnut Lake! Overlooking the terraced garden, a dramatic living room with studio ceiling and floor to ceiling fieldstone fireplace wall, two activities rooms on the lower levels, one with fireplace, four large bedrooms, 2 baths, 2 lavs, and an extra stall shower. Wonderful kitchen with walk-in pantry.



Only a year and a half old and beautifully decorated. A wonderfully liveable floor plan, the hub of which is a large paneled family room with pegged floor and brick fireplace wall. An equipped kitchen with ample breakfast space is a housewife's delight. All four bedrooms are twin size, the master with its own bath is 23.3x13.3. Location close to Bloomfield Hills grade and Jr. High schools, is ideal. A transferred owner will leave it with regret. \$42,500.

**YOU CAN BETTER YOUR HOME AND BETTER YOUR LIVING**  
in this home designed to please women .....



- Quad level . . .
- Dining Room separate . . .
- Family Room . . .
- Porch . . .
- Breakfast Room . . .
- Dishwasher, Disposal . . .
- Large Tiled Entrance Foyer, Carpeting . . .



**FRED PIERCE INC.**  
460 NORTH WOODWARD, BIRMINGHAM, MICH.  
Midwest 7-1414



**MAX BROOCK INC.**  
1895 — 1964  
300 S. Woodward

JO 4-6700

Open daily 9-8  
Saturday 9-5

MI 4-6700