

BRIDGE



in BIRMINGHAM

By **BUD MATHEM**
Southern Michigan Bridge Association

As promised last week, I wish to announce that the Mary Melchie Team won the Knock-out Team of Four Tournament. On her team were Bo Guy, Harry Philip, Dr. Patrick and Dr. Segula, who are all well known in the Birmingham tournaments.

Wish I were able to say my team had won, as we did win the most boards, but not the total points, and this was a total point affair. One of the interesting hands from this tournament is my hand for today. It was one of those that contained a big swing and takes many a small board to make up for it.

Both Vulnerable: Dealer: EAST.
NORTH (M. M. Team)

- ♠ A Q 8 6 4
- ♥ A K 5 2
- ♦ J
- ♣ 9 5 5

WEST (M. M. EAST (Dealer) Team)

- ♠ K
- ♥ 10 4
- ♦ K Q 10 9 8 7
- ♣ K 10 3 2

- SOUTH
- ♠ J 9 8 7 6 3
- ♥ 8 3 2
- ♦ 7 4

The bidding:
EAST SOUTH WEST NORTH
1 ♠ pass 2 ♣ dbie.
3 ♣ pass 3 ♥ 4 ♣ 4 ♥
all pass.

Opening lead: K ♣.

The East and West half of the Mary Melchie Team arrived at a five club contract. Therefore her team gained 20 points for the game in hearts contract and 600 points for the minor suit contract and a swing of 1,220 points. Happy to say that this didn't happen to my team.

HILDA MURPHY has changed her Thursday evening game to Monday evening. It will remain at the Birmingham YMCA and will continue for the months of July and August. She will change back to Thursday evening in September when The Community House opens on Monday evening.

For those who didn't obtain the free Bridge Booklet, Pontiac Motor Division, Pontiac, Mich., will send you this booklet if you mail your name and address to them for it. It is entitled "Easy Guide to Duplicate Bridge."

WINNERS IN RECENT Birmingham include Gloria and William Guay; Edwin V. Clarke and Roy Maybaum; Helen Bernardini and Elva Beukema; Dottie and Chuck Thumser; Dr. and Mrs. Lutz; Magda and Gerald Gould; Doris Thompson and Esther Clarke;

Goldie Beal and Hilda Murphy; Grace and Jack Stone; R. A. Hayes and T. A. Greenfield; Ann Haskin and Stan Kaufman; Judy and David Buskirk; Ollie Swarswalder and Greta Shephard; Jane Nicol and Josephine Pinkham; Lill Conrath

and Peg Main; Ruth Guild and Craig Madvin; Joan Distler and Grace Miller; Ralph Tyson and Ed Clarke; F. A. Webber and Bill Axler; George Alderton II and Bud Whiteman; Phyllis and John Malstrom; Millie Hollis and Melvin Small and Fred and Jane Cook.

TOURNAMENTS To look forward to are the Nationals at Toronto, starting July 24 and continuing through August 2, and the Pittsburgh Regional over Labor Day. Also there will be a sectional tournament at the Somerset Motel in Cleveland in August.

I did attend this last year and cannot recommend it too highly. It is a summer resort motel with a pool and air conditioned playing space. Please contact me for additional information.

Simply spin your dial to Midwest 4-1100 and a professionally-trained advertiser will help you prepare your message.

Area Teachers Named to Judge English Awards

Mrs. Katherine K. Bunt of Seaholm High School and Carl G. Wonnberger of Cranbrook School have been appointed regional judges for the National Council of Teachers of English Achievement Awards Program of 1964.

Judging committees, composed of English teachers from both colleges and high schools will evaluate writing skills and literary awareness of nearly 7,000 high school participants.

The Achievement Awards Program attempts to grant recognition to outstanding high school seniors for excellence in English. Finalists are announced in late November and are recommended for scholarship aid to all U.S. colleges and universities.

THIS COMPETITION is part of the comprehensive program of the National Council of Teachers of English to improve instruction in English language and literature at all levels throughout the nation's schools.

The NCTE is a professional organization to English teachers whose membership now includes more than 90,000 teachers from primary grades to graduate school.

Movie Guide

Pariente Committee
Birmingham P.T.A. Council

MOVIE	Green Sheet	National Legion of Decency
Bedtime Story	A-MY-Y	A-3
Gathering of Eagles	A-MY-Y	A-1
The Patsy	GA	A-1
Son of Captain Blood	GA	A-1
Jason and the Argonauts	GA	A-1
Zulu	A-MY-Y	A-3

* recommended as superior entertainment especially for children

CODE GREEN SHEET
These audience symbols are intended as broad guides to selection, and do not indicate either recommendation or non-recommendation of the films to which they are applied.

- A Adults
- MY Mature Young People
- Y Young People (12 years to 16 years)
- C Children (unaccompanied by adults)
- GA General Audience

NATIONAL LEGION OF DECENCY
A-1 Morally Unobjectionable for General Patronage
A-3 Morally Unobjectionable for Adults and Adolescents
A-S Morally Unobjectionable for Adults
B Morally Objectionable in Part for All
C Condemned
SC A separate classification is given to certain films which, while not morally offensive in themselves, require some analysis and explanation as a protection to the uninformed against wrong interpretations and false conclusions.

B'ham's Del Gaudio Features Exhibit of Holland Glassware

The Del Gaudio Shop at 148 Pierce, Birmingham, is featuring a special exhibit of Royal Leerdam crystal from Holland. The exhibit opens July 17 and will run through July 28.

The works of A. D. Copier will be on display. Copier is the director of art at Leerdam and founder of the Leerdam Glass School. He is an artist whose achievements are reflected throughout the various developments of art glass at Leerdam.

The glass engravings are made by means of small, fast rotating copper wheels for the use of which particular skill is required. The decoration is cut out of the surface of the glass, by which the optic effect of relief is obtained. It is easy to understand that it takes a good many years to become an accomplished engraver.

Wives are wild about husbands who use The Birmingham Eccentric Classified Ads to Get Extra Cash ... Dial Midwest 4-1100 today for cash results.

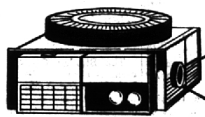
SIMPLE FACTS . . .
... the best location, the best sites, the best values!

Overbrook*

MAX BROOCK INC.
MI 4-6700

*West Long Lake and Lahser Roads.

HALL & YOUNG



Showcase of homes
REALTORS

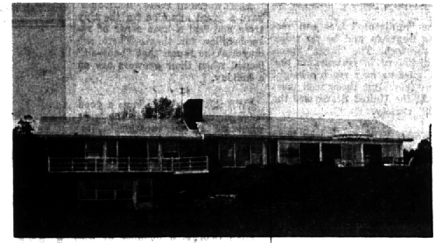
BIRMINGHAM 345 S. WOODWARD MI 6-7900
BLOOMFIELD 4114 W. MAPLE MA 6-5900

OPEN TILL 9 P.M.



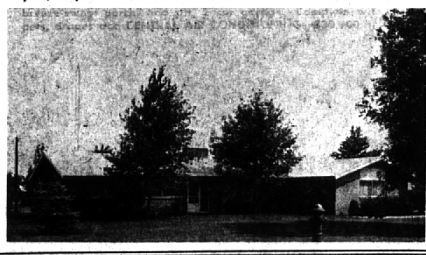
WEST BEVERLY
Unusually attractive and spacious throughout, this brick ranch enjoys a beautifully landscaped 100 ft. site. There are 3 twin-size bedrooms, cool jalousied porch with adjoining patio, strikingly restyled kitchen, and a full tiled basement. **DON'T MISS SEEING IT! \$32,000.**

WALNUT LAKE—You're standing on the shore of a fun-filled lake looking back at this neat and completely remodeled white cottage. Large living room with a Contemporary fireplace, 16 ft. lakeview kitchen, 2 big bedrooms, 1½ baths, and a guest or play house. **SUMMER DAYS! \$29,900.**



LUXURY LAKEFRONT—Designed so that every major room has an outstanding view of sparkling Meadow Lake, this superb Bi-level is immaculate. 3 excellent bedrooms, 4 full baths including swimmer's bath in the lower level, 30 ft. family room plus huge recreation room, and att. 2 car garage. **NOW! \$63,500.**

EASY LIVING—With the practical convenience of a center entry hall, this ell-shaped brick ranch offers comfort and easy maintenance. Three bright bedrooms served by 2½ baths, family room, breezeway porch, and att. 2 car garage. Complete with carpets, drapes and **CENTRAL AIR CONDITIONING! \$30,900.**



EARLY AMERICAN RANCH—4 bedrm., 1½ baths. Tastefully decorated living room with raised hearth fireplace, opening on covered terrace. Beautifully landscaped rear yard. Eating space in kitchen. 1st floor utility. Easy walk to Birmingham schools. **\$24,500.**



KNOW YOUR VALUES? Then don't miss this rambling executive ranch on hilltop site in West Bloomfield. 3 generous bedrooms, beautifully paneled library. Kitchen with eating space and blt-ins. Excellent carpeting and drapes. **\$36,500.**

Chamberlain Co. REALTORS

975 S. Hunter Blvd., Birmingham, Mich.
MI 6-6000

31500 Northwestern Hwy., Farmington, Mich.
MA 6-9100