



Home entertainment takes on new excitement when you serve such interesting dishes as this delicious pilaf. It has exotic touches of the Far East. As is typical with foods originating in India, it combines taste surprising raisins with the well seasoned rice. You'll find this excellent to serve with grilled meats, baked chicken or a rack of lamb.

- PILAF EXTRAORDINAIRE**
- 1/4 pound butter or margarine
 - 2 cups long grain rice
 - 1 teaspoon salt
 - 1/2 teaspoon saffron
 - Freshly ground pepper
 - 3 (10 1/2 or 11-ounce) cans chicken consommé
 - 2 medium-sized onions
 - 1 cup dark or golden raisins

MELT HALF THE butter in heavy skillet or Dutch oven. Add rice and cook over moderately low heat, turning occasionally until golden brown. Add seasonings and chicken consommé. Cover and bake in moderately slow oven (325 degrees F.) 1 1/2 hours. When done each grain of rice should be separate and fluffy.

Meanwhile, peel and slice onions paper thin. Cook in remaining butter over very low heat until soft and yellow. Stir raisins into rice and let stand 5 minutes before serving. Mound raisin rice on serving platter and garnish with onion rings. Makes 6 servings.

Blue Cheese Makes Grade as Main Dish

The rich heritage of cheese-making is combined with the techniques of modern science in the production of American blue cheese. A gourmet product with appeal to many consumers. Once used only as a salad dressing ingredient or a dessert offering, blue cheese today is becoming a popular main dish ingredient.

The blue flavor streaks in blue cheese are caused by the addition of an ingredient, called penicillium roquefortii. It comes in powdered form and is carefully measured before being added to the milk. The primary achievement in American production methods has been a quality control program that assures uniformity in flavor and texture.

THE ROUND five to six-pound wheels of blue cheese are formed in the "hooping" process. Here the curd is poured into perforated stainless steel hoops. The hoops of cheese are put on a draining table where they are turned several times during the first day to produce uniform shape and structure. Regular inspection by the government assures sanitary conditions.

After the cheese has been salted to protect it during aging, the wheels are pierced with solid stainless steel needles.

This is done to allow the gas of fermentation to escape and permit the entrance of air that promotes the growth of the spores of penicillium roquefortii, which create the characteristic piquant flavor of American blue cheese.

EACH LOT OF BLUE cheese is "tried" periodically to determine its development. After about 20 days in the curing room, the flavor streaks are in full bloom and the cheese is put in the storage room for its final aging. American blue cheese is aged longer than foreign blue mold cheese, up to 150 days in some brands.

Sew and See All Things

A transparent nylon thread has been on the market now for several months. The National Institute of Dyeing examined the new thread under their fashion microscopes and have come up with the following practical observations for home sewers and ironers.

There are two basic types of transparent nylon thread—clear and smoke. The thread is sold as an "all purpose" thread that can be used for home sewing.

IT IS CLAIMED that with one thread you can sew buttons on a white shirt, hem a yellow skirt and mend your child's jacket. The smoke or charcoal thread has a shade of brown in it and is more suitable for navy, black, gray, and brown fabrics.

In addition to these advantages there are disadvantages. The transparent nylon thread is more wiry and much more difficult to sew with than ordinary thread.



Animals Await Visitors In State Zoos, Parks

Michigan offers visitors a bit of Erin on Beaver Island and in the Irish Hills, a sampling of the Netherlands at Holland and Zealand a touch of Germany at Frankenthum or Westphalia.

For those who seek adventure of a different kind, however, there is also a little of Africa, tropical India and the high country of South America or the Australian desert.

Year after year Michigan zoos remain an outstanding travel attraction, according to the Michigan Tourist Council, and they are ready for another busy season.

Largest zoological park in the state and one of the outstanding attractions of its kind in the nation is the Detroit Zoo in Royal Oak. Nearly 5,000 animals are housed in surroundings which are designed to provide maximum visibility for visitors.

ALONG THE THREE and half miles of roads, visitors will find nearly every representative of the animal kingdom, a large bird collection and a modern reptile house.

The exhibits have been designed to resemble the native habitat of the animals and most instead of bars are used to confine the animals.

On Belle Isle in the Detroit River is the companion Children's Zoo. The exhibits are presented in zoobooks settings designed to appeal to youngsters, and in some cases they are allowed to handle the animals.

Second in size in Michigan and also rated as one of the finest zoos in the nation is John Ball Park in Grand Rapids. The Ball Zoo annually attracts more than one-half million visitors.

TUCKED AGAINST rolling hills most of the exhibits are also mounted, but the displays are terraced to conform to the terrain while attempting to match the animal's natural habitat.

On open display are game animals from throughout the world, a number of species of bears and such favorites as monkeys. There is a tropical sanctuary, an aquarium and a reptile house as well as a children's barnyard zoo.

In Michigan's upper peninsula the Presque Isle Park zoo near Marquette annually attracts many thousands of visitors. The emphasis is on Michigan wildlife with a whitetailed deer herd roaming the enclosed forest preserve. A number of other animals native to the area are on display.

PAST AND PRESENT Michigan wildlife is also featured at Clinch Park in Traverse City. Nearly 40 different types of wildlife including timber wolves, bobcats, Wolverines, otter, beaver, bear and deer are on hand as well as buffalo, once native to the state.

At Kalamazoo, animal exhibits are a part of rustic Millam Park. The emphasis is on family outings, and a scenic stream winds through the park with its well-trimmed banks providing a popular picnic site.

Potter Park in Lansing features nearly 200 animals in some 75 exhibits. An aviary houses 30 kinds of birds while a monkey island, a lion house and a native wildlife exhibit annually attract many visitors.

NEARBY IS Arboretum Park on the edge of Lansing where a prairie with buffalo, deer, wild turkey, fox, prairie dogs and eagles are presented in their natural habitat.

A trip to the zoo is an ideal weekend outing for the entire family and in Michigan these wildlife displays are within easy reach of everyone.

Cookbook Offers Recipe On Preparing Husbands

While melting through the recent warm stretch, I took time off to thumb through the Farmer's Almanac for 1964. The author's weather prediction seemed to coincide with the reports given over TV. The people born in this cycle love to travel and are fickle in love; therefore they should not marry early.

Ann Landers had an article in the almanac about the 12 rules for raising children. Also included was sundry data such as "How to Cook a Husband" from a 1700 cookbook; that article would really spook a good husband!

LET'S GET BACK to your garden area—you will enjoy using foliar feeding on your choice plants by mixing the required amount of powder as recommended on the package followed by sprinkling on the total plants for a quick pickup. If you lack a sprinkling can you can easily use a large juice can with small holes punched in it.

Many of our local plant lovers have orchids outdoors now. They will need frequent feeding and the fertilizer high in phosphate (the middle figure mentioned in a formula designates this chemical) will give the best results.

We are using stones to give accents to our garden areas.

Mrs. Mary in Katke found out a few years ago that stones the size of beach stones will readily be pushed aside by bulbs which come up in the spring-time, but crushed stones or rocks will resist the movement and deter the planted bulbs.

It is always flattering to know that Dr. Robert T. Hatt of the Cranbrook Institute of Science follows the "Down To Earth" column. He was interested in my description and frustrations over the recent visit of inch worms.

Dr. Hatt reports that the first warm day in spring they placed a band of tangle-foot around a few trees to catch the female moth crawling up the trees. The total job worked "pretty well."

"ON MANY OF THE trees at Cranbrook, a spray of lead arsenate was applied, and this was quite effective. It apparently does not do very much damage to bird life."

I hope our suppliers have a large inventory of tangle-foot for early spring of 1965. We do not have eaten leaves on trees at the farm where a spraying program is not carried out. I guess two and two makes four. I still have vivid memories of those inch worms attacking me.

RIGHT NOW LOOK over your infant shrubs, trees and annuals. Don't you have a few specimens which you can train to be "standards." This term means trimming off the side branches, allowing a sturdy trunk to develop and ending up with an open umbrella effect at the top of the plant. You can train wisteria, eustomas, etc.

The most handsome plant I have ever seen trained to a standard was an annual lantern. It ended up four feet high with a third trunk like an open umbrella of flowers which bloomed all winter in a sunny window. Of course it took a few years to grow to this size, but what a gem!

Trim back those shrubs, especially the Forsythia which has abundant soft growth this time of year.

Get The Know-How Of Broiling Meats

There's more to broiling meat than just tossing a steak or chop on the rack. A few broiling tips can make the difference between broiled food that's good and broiled food that's perfect.

For juicier meat, salt after broiling, not before. Salt tends to draw juices out of the meat as it cooks.

Turn meat only once and use tongs rather than a fork. Piercing the meat with the tines of a fork causes the loss of most juices.

When broiling frozen food, place it on the shelf one position lower than indicated in the guide to your range. Also, allow about one and a half the suggested cooking time.

Modern Grillers Copy Ancients

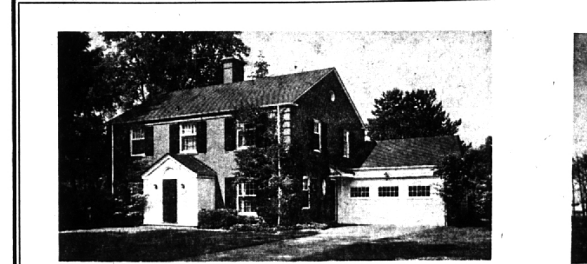
Cooking on a spit is almost as old as man, yet it's as up-to-date as today's teenager. If you have an electric range with an automatic rotisserie.

Outdoor cooks learned long ago that meat cooked on a spit, slowly turned to give every inch a golden brown succulence, has an extra quality made up of flavor, tenderness, juiciness. Now meat can be barbecued right in the kitchen all year 'round for outdoor flavor without the fireplace fuss.

Accurate electric heat plus automatic timing ensure consistently good results.

Ties Disturb Peace

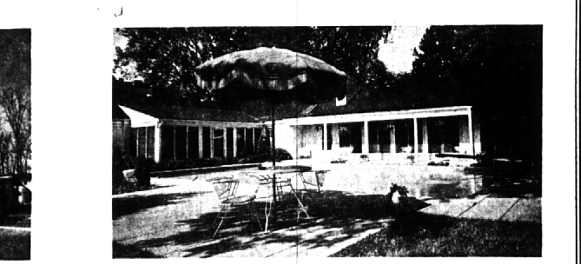
Paul Steiner, author of "175 Little-Known Facts About John F. Kennedy," wore some neckties that were a little on the wild side to art exhibits to art exhibits to see how people would react. He found that while some of the swiftness works of art were readily accepted by the viewers, his ties created more of a sensation.



IN THE HEART OF THE QUARTON AREA—4 bedrooms and 2 1/2 bathrooms. Library, recreation room and screened porch. Living room size is 28' x 15'. Landscaped privacy in rear yard. All face brick. Charm and the structural character of fine homes built in the late "thirties." \$40,000.00.



EVERYTHING HAS BEEN DONE FOR YOU in this lovely big family home. Five bedrooms and three bathrooms. 23 foot family room plus play and a third fireplace. Recreation room with Bar-B-Que grill and roisserie. Ideal for children—walk to elementary and Jr. Hi. schools. Bus on corner to Sr. Hi. and Parochial Schools. VACANT. \$49,500.



ENJOY YOUR OWN SWIMMING POOL EVERY DAY, and really live! Quick possession of this five bedroom four bath home in Foxcroft, 26' paneled family room with second fireplace plus large glassed porch. Modern kitchen. Recreation room. Pretty HOT these days—a dip in the POOL makes everything worthwhile.



HARD TO BELIEVE—but true. Three bedrooms, living room with fireplace, dining room and recreation room with fireplace. Screened porch. Fenced yard. Cement driveway. In excellent condition. On Bates Street IN TOWN. \$23,000.



GREATEST VALUE IN BLOOMFIELD VILLAGE. Only \$37,900.00 and has four bedrooms and 2 1/2 bathrooms. Dining room and paneled family room. Walk to shops. Excellent location for schools and transportation. VACANT—You can move right in.



\$17,900.00 and has three bedrooms (upstairs bedroom is paneled). Separate dining room, family room and fireplace in living room. Basement floor all tiled. Fenced yard. Perfect for young couple. EASY FINANCING—IMMEDIATE POSSESSION.



NEAR ADAMS AND DERBY SCHOOLS. Three bedrooms. Dining room. Paneled recreation room with refreshment bar plus porch. Carpeting and draperies included. NEAR KROGER store too! \$21,750.00.

Weir, Manuel & Snyder, Inc.

298 South Woodward Birmingham, Michigan Realtors

Birmingham 644-6300
Phoness: From Detroit 566-2323