

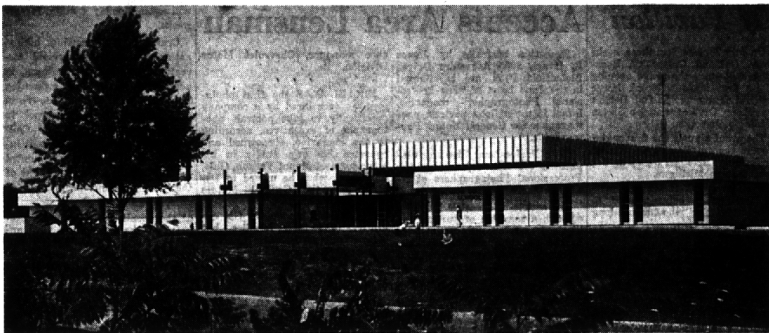
Meadow Lake Is School of Month

Meadow Lake Elementary School, a recent addition to the Birmingham Public School System, has been selected by The Nation's Schools Magazine as the nation's school of the month for July, 1964.

The magazine states: "Meadow Lake Elementary School is being used as it was planned to be used—to help teachers innovate and work together." The school is located on a 10-acre hilltop site off Inkster Road just south of W. Maple Road in Bloomfield Township.

AWARD CERTIFICATES commemorating the selection of the school for this recognition will be presented to John Blackhall Smith, superintendent of the Birmingham Schools; Albert Schumm, principal at Meadow Lake; and to the architects, Linn Smith Associates, Inc., of Birmingham.

"The Nation's Schools," a national magazine devoted to better school administration, selects an outstanding school each month on the basis of excellence of architectural design, functional planning, and economy of construction and operation as evaluated by its editorial committee.



BLOOMFIELD TOWNSHIP'S MEADOW LAKE ELEMENTARY SCHOOL NAMED PRIZE-WINNER

Award goes to educators and architects Linn Smith Associates of Birmingham.

Student Musicians Present Concert

Cheryl Johnson of 4789 Hedgeham participated in the mid-term wood Drive, Birmingham, and Dan concert of the high school Creative Drevz of 6060 Brammoor, Birmingham Arts Workshop Friday. The Olivet session which began June 21.

HOUSEHUNTING

. . . in the best areas? One home is nearly ready

in *Overbrook**

MAX BROOK INC.

MI 4-6700

*Paved roads, water, sewer, underground utilities

BRIDGE



By **BUD MAYBAUM**
Southern Michigan Bridge Association

The recent regional (red point) tournament in Akron, Ohio, found many of my Birmingham friends attending. Most of them did grab a few of those precious red points. Molly and Bruce Coryell won a first in a section and third overall, and one of the hands they played is a good example of how the opponent's bidding and play can help the declarer to reach the proper contract and a top board.

Neither Vulnerable: Dealer: NORTH (Bruce Coryell)

♠ K 9 7
♥ 5 4
♦ Q 10 3
♣ A K 7 6

WEST EAST
♠ 10 3 ♠ A J 4
♥ Q 8 7 2 ♥ A J 10
♦ J 6 5 ♦ A 7 2
♣ Q 3 2 ♣ 10 8 5 4

SOUTH (Molly Coryell)
♠ Q 8 6 5 2
♥ K 3
♦ K 9 8 4
♣ J 9

The bidding: NORTH EAST SOUTH WEST
pass 1 ♠ 1 ♠ pass
3 all pass

Opening lead: 2 ♠

Most players in regional tournaments believe that they must start bidding at the first opportunity, but one of the big factors in the success of this hand was the pass by Bruce on his first chance to bid. East's bid of one club was a normal bid as was each succeeding bid. West's opening lead of a club cannot be questioned.

MOLLY DECIDED to play low from the dummy as this would promote her jack no matter who held the queen. When her jack held the first trick, she immediately attacked the trump suit and played low from the closed hand up to the king in dummy. East won this trick and returned the jack of hearts.

Molly knew the only way to win a heart trick was to play the king, so that she did, and when it held, she returned a club and discarded her other heart on the club king. Next she led the low diamond from dummy and up with the king and returned another diamond and hooked the ten.

With this line of play she was able to keep her losing tricks to two trump and one diamond for a top board.

HILDA MURPHY wishes to announce that Grace Stone was the winner of the Tuesday afternoon series championship. Esther Clarke was second and Dorothy Kelly was third.

The Southern Michigan Bridge Association Knock-Out Teams are now down to four teams. Don Bowen's team with Hank Georgia and Bruce Coryell is still in it. George Alderton's team with Ed Y. Clarke and Bud Whitman is still going.

The other two teams are Mary

Melchie's team with Doctors Patrick and Scula and Bo Guy and my team with Phyllis and Jack Malmstrom, Tom Batten and Walter Lauchner. Will announce the winner next week.

OTHER WINNERS in regular Birmingham tournaments include Jim Fenwick and Charlie Strelinger, Doris Thompson and Larry Nixon, Arlene and Burnett Heck, Marion and Al Collins, Tuckie Stinson and Hugh Stevenson, Hilda Murphy and Gloria Ravits, Esther Clarke and Dorothy Kelly, Goldie Beal and Ann Haskins.

Grace Stone and Lillian Smith, Dorothy and Chuck Thumser, Gloria and Bill Guay, Edwin V. Clarke and Bud Maybaum, Jim Crabb and Stewart Murphy, Olive Swartzwalder and Greta Shepherd, Harry Olde and Henry Bardstey, Tom Batten and Sandy Stevenson and R. A. Hayes and T. A. Greenfield.

Hilda Murphy wishes to announce that Chuck Thumser and Peter Drees were the winners of the Thursday evening series championship and that Arlene and Burnett Heck were second.

Michigan Artists Show Set to Open

From 1,783 entries submitted, 69 works by 63 artists comprise the 54th Exhibition for Michigan Artists which opens at 8 p.m. Tuesday at The Detroit Institute of Arts.

Simultaneously, a one-man show of paintings by Richard Kozlow will open to the public. The Detroit-born artist receives this distinction because he was awarded the Founders Society Detroit Institute of Arts Purchase Prize in the 1963 Exhibition for Michigan Artists.

Both exhibitions will remain through Aug. 23.



APARTMENTS

Three apartments available for immediate occupancy. Reservations now being accepted for October in final section.

(Hotspot Appliances)

FOX CROFT APARTMENTS
in Bloomfield
Maps and Telegrams
Phone: JO 4-6818

PICTURE FRAMING

EXPERTLY DONE IN OUR OWN SHOP

ART SUPPLIES

FOR THE AMATEUR AND PROFESSIONAL

ART CLASSES

FOR ADULTS AND SCHOOL AGERS

ARTISTS' SUPPLY CENTER CONVERSATION

(WE ENJOY BEING HELPFUL)

1220 N. Woodward (E. Side)

2 blocks South of 12 Mile Rd.

LI 8-7680

Open Daily 9-6

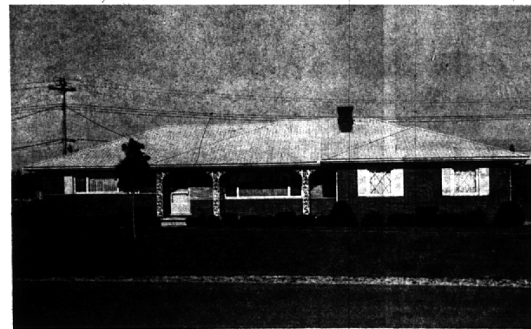
PICK YOUR TYPE & SITE



CITY COLONIAL—lovely site in prime location with mature trees and landscaping. SHORT WALK TO SCHOOL.

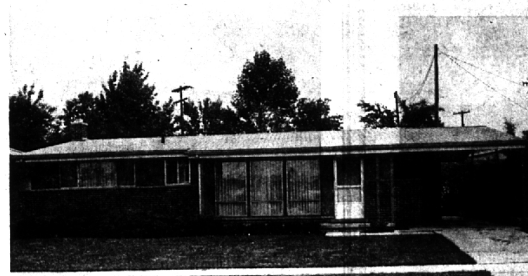
Living room with fireplace, and fireplace screen included. Separate Dining room—large enough for Family & Friends. Paneled Library. Screened Porch and Patio. 3 Bedrooms, 1½ Baths. Excellent closets. Full Basement with Recreation room and fireplace and separate work shop or office. Kitchen with built-in oven, range, disposal, dishwasher, all new in 1963.

THIS IS A CLASSIC FAMILY HOME with much charm and lots of room for living—at only \$32,900.



COUNTRY RANCH—high on a hill with scenic vistas in all directions and view of Meadow Lake.

Exceptionally well-built with Roman Face Brick. Living room with fireplace. Dining room. 1st floor Family room. 3 Bedrooms, 2 full Baths. FULL BASEMENT with Recreation room area and fireplace. All Thermopane windows—aluminum screens. Kitchen with new vinyl floor—built-in oven and stove, Dishwasher, disposal. Carpeting thruout and all Draperies included. Easy maintenance and Comfortable Living. Priced at \$39,900.



CITY RANCH—an Excellent Family area, especially for young families. WALK TO SCHOOLS—winding paved roads and pretty, well-maintained lawns and shrubs.

Good-sized Living-Dining room. Kitchen with eating space. 3 Bedrooms, 1½ Baths. FULL BASEMENT with Recreation room and separate card room. Carpeting and Draperies included.

CENTRAL AIR CONDITIONING with York twin-condenser unit. This home is particularly attractive and meticulously maintained. THIS IS A REAL VALUE in an area always good for resale and mortgaging. ONLY \$20,900.



COUNTRY COLONIAL—but close to City on a wooded, curved cul-de-sac for seclusion.

23-foot Living room with beamed ceiling. Separate Dining room. Paneled Family room on 1st floor, with pegged floor and raised hearth. Kitchen with double oven and built-in stove. Breakfast area. 4 BEDROOMS, 2½ Baths. Excellent closets. Master Bedroom has its own Dressing room. 1st floor Laundry. Full tiled Basement. Wet plaster construction. Face Brick and Aluminum siding. Extra insulation thruout. Merion Blue lawn and magnificent trees. New wool carpeting and Draperies thruout. YOU'LL LOVE THIS. Only 3 years old. Priced at \$39,500.

OR
Wherever you want to live
SEE US—

We are now affiliated with the largest intercontinental referral system in the entire United States. American Institute of Marketing Systems, Inc. Reputable—Reliable—Resourceful



SNYDER KINNEY & BENNETT
INC.
Realtors

239 S. Woodward, Birmingham MI 4-7000
32740 Franklin, Franklin MA 6-9600