



USN Man Returns From Eastern Duty

Richard P. Guthrie, aviation machinist's mate third class, USN, son of Mr. and Mrs. Donald Egbert of 721 N. Woodward, Birmingham, is a crewmember of Attack Squadron 98 aboard the Navy attack aircraft carrier USS Midway which recently returned from a tour of duty in the Far East.

The squadron flies the Douglas "Skyraider," a jet-propelled bomber aircraft. During operation in the Western Pacific the squadron logged more than 4,000 flight hours. The squadron is homebased at the Naval Air Station, Lemoore, Calif.

One of Crickets

Rickey Buscemi, 28456 Sunset, Lathrup Village, will play drums in the Italian Crickets combo at the Italian Festival Sunday at the Michigan State Fairgrounds. Other members of the Crickets who don fair-haired Beetle wigs are Tom Proctor of Inkster, Raymond Carbone of Hazel Park and Richard Massa of Detroit.

Area War Veterans Enjoy Long Holiday

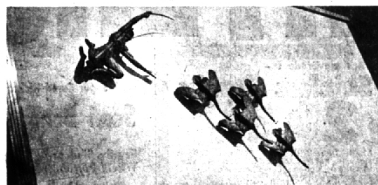
Veterans of WWI of the Birmingham, Ferndale, Royal Oak and Troy areas will not meet the first Sunday in July so that every member and auxiliary will be able to enjoy the long week end.

The next meeting will be the first Sunday in August at 2 p.m. at the VFW Hall.



Three for Fredericks

Washington, D.C., Milwaukee and New York City are locales for three new sculptures by Marshall Fredericks. The Expanding Universe (above), a fountain for the State Department Building, was dedicated yesterday in Washington. Indian and wild swans (below) extend 35 feet across facade of Milwaukee's public museum. Third photo shows Freedom of the Human Spirit, 27-foot permanent sculpture at U.S. Government Pavilion. See 1-D for pictures of a fourth Fredericks' project, the Cleveland War Memorial fountain, and story on all the sculptor's recent work.



Local Florist Asks For Research Funds

WASHINGTON, D.C.—John L. Bodette, 1315 Sandingham Way, Birmingham, executive vice president of Florists' Telegraph Delivery Association, has urged the Senate to appropriate additional funds to meet pressing research requirements of the floriculture industry in fiscal year 1965.

In testimony presented to a Senate Appropriations Subcommittee on June 18, Bodette said that approval of the requests for additional marketing and biological research funds, coupled with self-help measures initiated by FTD on behalf of the industry in the U. S. Department of Agriculture, will help to expand markets for floricultural products.

He said the twin attack on industry problems "will have the very practical result of creating more jobs; more economic opportunity; and in providing more and better service to the consuming public."

'65 Michigan Week Leaders Chosen

Edward L. Baker, Detroit postmaster, will be the deputy general chairman directing the 1965 Michigan Week organization in this part of the state, according to Edwin O. George, president of the Greater Michigan Foundation of Bloomfield Hills.

Woodward C. Smith, vice president of Central Michigan University, Mt. Pleasant, will be general chairman of the 12th annual Michigan Week.

Baker will have charge of three regions in southeastern Michigan that include 12 counties and more than half the population of the state. He will shortly appoint the three regional chairmen under whom county and community Michigan Week organizations of the area will serve through the coming year.

Lathrup Employees Given Pay Boost

Lathrup city employees received a three per cent boost in salaries on Wednesday, start of the new fiscal year.

All 13 employees received raises, while some reflected merit increases, according to City Administrator Gerald D. Stone. As the city's top administrative official, Stone's salary is now \$10,200.

Receiving slightly more than a three per cent increase was the five-man police force.

Seaholm Graduate Heads for California

Douglas Hamilton, son of Mr. and Mrs. Spencer Hamilton, 1795 Yosemite, Birmingham who enlisted in the U.S. Marine Corps, left for San Diego, Calif., June 23 for 12 weeks of basic training.

He will be stationed at Camp Pendleton, Calif., after October. He is a 1964 graduate of Seaholm High School.

When you're driving on your vacation—especially on the freeways—drive defensively. Try to anticipate what other drivers intend to do. Notice traffic conditions shaping up ahead and behind you and be ready to act accordingly.



P. M. CHANDLER

Chandler Vies for State Senate Seat

Paul M. Chandler, publisher of the Wayne County newspaper in northwestern Wayne County and now state representative from that area, will run for the state senate this fall.

Rep. Chandler, Republican, disclosed that he would file to run in the newly formed 14th Senatorial District, a district which has about half its voters in Wayne County and half in Oakland County.

THE WAYNE County portion consists of Livonia, Plymouth, Northville, Plymouth Township and Northville Township—all of which are part of Rep. Chandler's present house district. The Oakland County portion of the new district is a corridor on the western side of the county running north and south, roughly west of Inkster Road. It previously was south and Northville areas, said represented in the senate by Far-

roll Roberts, who has announced his retirement there to run instead for the court of appeals. CHANDLER is 44 years old, a graduate in political science of the University of Michigan and for the past eight years has been owner-publisher of the Livonian Observer, the Plymouth Observer and the Redford Observer.

He was elected to the house on his first attempt for legislative office in 1962, having unseated a Democrat incumbent. He is grouped with the Republican moderates in Lansing and supports Gov. Romney.

"One of the most attractive things about running in this new senate district is that it would permit me to serve a substantial number of the same people I presently represent from the Livonia, Plymouth and Northville areas," said Chandler.

YOUR GARDEN CENTER

LITTLE THINGS

FOR GREAT JOBS

- LAWN COASTERS** in gay colors to keep your cool drink out of reach of ants and other non-paying visitors. We can sell them for \$1.89 BUT you can buy them for 98c each—Here, that is!
- BUSHEL BASKET CENTER.** For apples, trash and what-have-you. Made of thin lumber (wood), they hold more than a bushel and are 45c ea.
- SCALES** of several types, particularly the LEGANUM (soft brown scale) are hatching now and can and should and MUST be controlled NOW BY SPRAYING immediately and again in ten days. You may use:—
ISOTOX—1 tablespoonful to a gal.
McCLELLAN-BALL SPRAY—1 tablespoonful to a gal.
2 tablespoonfuls 50% DDT or DD-IDE with 1 tablespoonful 50% MALATHION Thoroughly wet the twigs and branches.
- STRING** for all kinds of uses.
JUTE TWINE—brown—59c
JUTE TWINE—green—59c
CABLE CORD—white—50c & 85c
BINDER TWINE—5,300 ft. for 3.85
May we mention TWIST-EMS & PLASTIES which are not string but are useful ties. Yes? OK.
- PLAY BOX SAND**—Exciting, washed, flat, brown sand—the kind that makes wonderful castles, hills & tunnels. In other words the kind that molds well. 1 bag (80 to 100 lbs.) \$1.00 delivered. 1 cu. yd.—Shoveled from truck—9.00

Note: to help you determine how much you need: 2 bags on 9 sq. ft. will be 3" deep. 6 bags on 25 sq. ft. will be 3" deep.

STORE HOURS

for
JULY and AUGUST
8:00 A.M. to 5:30 P.M.
CLOSED ALL DAY WEDNESDAY
(We hope you agree this is a good plan)
thanks

- Why pay someone to do your little concrete and mortar jobs when it is such a cinch with **REDI-MIX CONCRETE** **REDI-MIX MORTAR** 95 lbs. \$1.19 50 lbs. 75c
- To make the daily job easier you should equip your razor with a **WILKINSON SWORD CO. STAINLESS STEEL RAZOR BLADE** (from England, no less)
- STONE CHIPS** for paths & planters. **MARBLE**—7c a lb. **QUARTZITE**—9c a lb. Note: 9 lbs. puts 1 inch on 1 sq. ft.
- Not so little, but does a terrific job in cooking for family, friends & fiesta fiends. **CHAR-BROIL GRILLS** They are not status symbols—they simply happen to be the best.

7 come 11. **WHITEHALL HOUSE SIGNS.** Beautiful cast aluminum plates with (or without) well designed figures of animals, trees, scenes, etc. and brilliant **DUG-GLO LETTERS & NUMBERS.** You should see some of them and look over the catalogue. Orders come in a week or thereabouts.

McCLELLAN-BALL CO.
Everything for the Yard and Garden
850 S. WOODWARD, BIRMINGHAM, MICH.
FREE AREA DELIVERY Midwest 4-4139

The fastest, least expensive way to sell any vehicle, new or used is through a low cost Eccentric Want Ad. Place your Want Ad by phone and say "Charge It". Dial 644-1100.



JA President

Rinehart S. Bright, 335 Cranbrook Court, Bloomfield Hills, was elected president of Junior Achievement of Southeastern Michigan during the annual stockholders meeting. Bright, vice president—Operations Staff of the Chrysler Corporation, has been active in Junior Achievement for 15 years and was elected to the J.A. board of directors in 1962. He was the general chairman of the 1963 Fund Campaign, and also the general chairman of last month's Future Unlimited celebration.

Marine Corporal On USS Okinawa

Marine Lance Cpl. Charles C. Baird, son of Mr. and Mrs. H. E. Baird of 1215 Riverwood, Birmingham, is a crewmember of Marine Medium Helicopter Squadron 264 aboard the Navy amphibious assault ship USS Okinawa.

The squadron uses a tactic known as "vertical envelopment" which is the flying of combat ready Marines over and behind enemy lines. It is homebased at the Marine Air Facility, New River, N.C.



APARTMENTS
Three apartments available for immediate occupancy. Reservations now being accepted for October in final section.
(Hotpoint Appliances)
FOX-CROFT APARTMENTS
in Bloomfield
Maple and Telegraph
Phone: JO 6-570

ENJOY OUTDOOR LIVING — BUILD A PATIO WITH REDWOOD FENCES

• FULLY ASSEMBLED PANELS • WATER & MILDEW RESISTANT • 3 HEIGHTS, 8 FT. LONG •

4x8' Woodweave Panels	5x8' Woodweave Panels	6x8' Woodweave Panels
\$10 ⁴⁵	\$12 ⁴⁵	\$13 ⁴⁵

Prices apply for 5 or more sections—FREE DELIVERY MOST AREAS.

PLAY SAND
CASH & CARRY 75¢ bag

ASPHALT REDI-PATCH
FOR PATCHING ASPHALT DRIVES
\$1⁹⁸
CASH & CARRY

Picnic Table Special
JUST THE ITEM TO ENJOY ON HOT SUMMER DAYS

• Emco Folding-leg Picnic Table
• 6-Ft. Long
• 27" Top and Seats
• Easy to Assemble
• Similar to Table Shown
• Tubular Frame
SPECIAL \$16⁹⁵
Cash and Carry

HOME IMPROVEMENT IS AN INVESTMENT, NOT AN EXPENSE!
CALL THE "HOUSE DOCTOR," MI 4-5300, FOR ALL YOUR MODERNIZATION NEEDS. HE WILL BE GLAD TO HELP YOU.

NOTICE: WE WILL BE CLOSED SATURDAY, JULY 4th

OUR LOCATION: MAPLE RD. 1/4 MILE RD. GLEBE

Your complete Home Modernization Center.

ERB-RESTRICK Lumber Company

425 S. ETON BIRMINGHAM MI 4-5300

AMERICAN FINANCIAL QUIZ #2

I am the owner of a small business. Where can I safely keep my capital reserve and at the same time have it working for me?

Place that money in a high-earning, insured savings account at American Savings and Loan Association. There your reserve capital will be safe, earning 4% per year and available to you on request.

AMERICAN SAVINGS AND LOAN ASSOCIATION

MICHIGAN'S LARGEST STATE-CHARTERED SAVINGS AND LOAN INSTITUTION

Telegraph Road and Maple Road / Other offices throughout greater Detroit