

Couple Collects Rare Rocks, Plus Trees, Shrubs, Flowers

Many of our local home gardens were open for inspection recently to support the Detroit Garden Center.

Visitors came to this area from Toledo and equal distances from all directions to study successful garden ideas. One hostess reported that one couple returned to her garden three times.

Among the generous hosts were the Nathan Reisses, 6100 Windrush Road, near the expressway, off Charlewood in the north Adams area. At once the visitors were captivated by the large collection of rare rocks the Reisses collected as they toured deep ravines by jeep in the West to follow their hobby as rock hounds.

Mrs. Reiss has as her hobby the collection of rare trees, shrubs, perennials and annuals. She secures

our total country for sources of the unusual. Let's share some of the findings of the garden tour seen in her garden:

SALVIA SUPERBA (purple glory) was a vivid mound of rich purple colored salvia. A purple leaf fibert was an ornamental tree which stopped the crowd. You don't have to be in England to grow scotch broom. Her variety praecox will grow to be five feet high and have pale yellow flowers.

The sweet leaf tree (Symplocos) has small white flowers in late spring followed by brilliant blue

fruit. The leaves are small and provide a dense total effect. I tell you, it was an education to walk over the ground bark paths which sloped to the south and study the labels on the rare collection of plants.

THE REISSES had ornamental dark red spinach called atriplex. This was located through Joe's Bulletin, Lamoni, Iowa (box 44). In this homey publication amateurs share their rare findings. "Why my mother way down in Brown County in Indiana always took this garden bulletin as long as I can remember." Right there the call was out of the bag. Dorothy is a born gardener.

In the garden was a nectarine tree heavily laden with fruit, groaning under the load developing for harvest. The flowers are pale pink with red centers. Now there is a good specimen for a subdivision to use as their "theme song." The areas around here are always endeavoring to personalize their streets by a wholesale purchase of trees to provide spring splendor.

POPLAR TREES are often used to provide a tailored vertical accent but soon they look as though the moths have been in them. You should see their columnar crab-apple trees (Malus Baccata) which provides a dense columnar effect with beautiful white flowers, followed by fruit.

Silybium is called a blessed thistle which is the most unusual plant I have ever seen grown from seed. It has large mottled leaves of two shades of green with purple flowers. A hydrangea petiolaris was a lush vine growing on the north side of their house.

A **BEAUTIFUL** waterfall was created by starting with a large galvanized laundry tub, painted black, then embellished with some beautiful specimen rocks which had water piped up through a plastic hose undercover. A recirculating pump connected to an electrical outlet assured the home gardeners of an exotic detail.

Anybody could make such a fountain. This column has only told you about a small portion of the new plants seen on Windrush Road at the Reisses. The knowledge was shared with the generosity often associated with Hoosiers, or shall we say, characteristic of true gardeners.



A Tableful of Gardening Ideas

INITIATING the Metropolitan Community Cultural Luncheon Series designed to introduce community leaders to the just completed Beverly Hills-Birmingham Office of Metropolitan Federal Savings (14 Mile at Southfield), Mrs. Alice Burlingame, columnist for The Birmingham Eccentric, presented a slide-illustrated discussion on "Ideas for Your Home Garden." Additional speakers in the series were Nathan Gor-

don and Gordon Staples, Detroit Symphony Orchestra, and Lawrence A. Fleischman, president of the City of Detroit Arts Commission. Viewing a tableful of ideas are (from left) Mrs. Burlingame; Mrs. Roger Richards, 25500 King Richard Court, Birmingham; Mrs. Cecil Bruton; Mrs. Charles Dameron, 18450 Warwick, Birmingham; Mrs. Arthur Hudson, 286 Pleasant, Birmingham, and Mrs. Ernest Fournier.

RECIPES DESIGNED FOR DINNER-IN-A-HURRY

Mexican Foods Getting More Popular

Even though meals of Mexican origin are common in the Southwest, particularly California, Arizona and Texas, about 80 per cent of the people in the U.S.A. never have tried them.

They're growing in popularity, though. You can whip up a Mexican dinner in no time—well, 20 minutes, anyway—since almost all of these delicacies are available at your nearby store.

ENCHILADAS CON CHILI CON CARNE
2 cans (15 1/2 oz.) chili con carne with beans
1 dozen corn tortillas
1 can (20 oz.) enchilada or red chili sauce
1 cup grated cheese (longhorn or cheddar)
1 can (4 oz.) chopped ripe olives
Cooking oil
Heat chili con carne in a saucepan. Dip corn tortillas in hot cooking oil for a few minutes to soften them. Drain. Spoon a portion of the chili con carne and olives in

the middle of a tortilla and roll. Continue the process, laying the rolled tortillas side by side in a 12" x 8" x 2" baking dish. Pour enchilada or red chili sauce over all. Top with grated cheese. Bake in a 400 degree oven for 20-30 minutes. Serves four-six.

ALMENDRADO
This is a most delightfully refreshing, light Mexican dessert. In the Mexican national colors of red, white and green, it is a perfect finish to any meal.
1 1/2 envelopes unflavored gelatin
1/2 cup cold water
6 egg whites
1/2 cup sugar
1/2 teaspoon vanilla
1/2 teaspoon almond extract
Softener the gelatin in cold water. Add the boiling water and stir to dissolve the gelatin. Set aside while you beat the egg whites stiff. Add the sugar a little at a time, alternating with the gelatin mixture. While still beating, add the vanilla and almond extract. Whip

until the ingredients are thoroughly blended. This should make about two quarts of a fluffy "foam." Divide mixture into three parts. Leave one part white, tinting the other green and red. Pour the three layers into a dish 12" x 8" x 2" using red, white and green. Chill.

ALMENDRADO CUSTARD SAUCE
2 tablespoons cornstarch
1 tablespoon cold milk
2 cups scalded milk
1/2 cup sugar
6 egg yolks
1/2 teaspoon vanilla
1/2 teaspoon almond extract
Dissolve the cornstarch in cold milk. Add to scalded milk with sugar. Cook until it starts to thicken, stirring constantly. Beat together the egg yolks, vanilla and almond extract. Slowly add to the hot mixture and continue to cook stirring until the custard thickens. Chill. Serve the almendrado in squares, topped with the custard sauce and garnish with slivered almonds.

TACOS
1 dozen frozen beef tacos
1 head lettuce, shredded
1/2 pound cheese, grated
taco or hot sauce
Cooking oil
Either heat one-quarter inch of cooking oil in a skillet, or heat oil in a deep fat fryer to 350-370 degrees. In either case, fry tacos until as crisp as you want them. This takes a minute or less in deep fat frying or about one minute on each side for skillet frying.
Drain tacos. Stuff with cheese and lettuce. Serve with taco or hot sauce, to be used at the discretion of the eaters.
ENSALADA GUACAMOLE
2 large or 3 small avocados
6 medium sized tomatoes
1/2 teaspoon onion powder
1/4 teaspoon garlic powder
1 teaspoon salt
Dash of lemon juice
1/4 cup diced green peeled chili
Lettuce leaves
Wash tomatoes, remove cores and scoop out the middle of the tomatoes. Save this tomato pulp.

surfaces would be impossible.
VENEER consist of thin sheets of wood that are selected and cut for their beautiful graining. Several of these sheets, and the number varies, are glued and pressed to the foundation surface of the furniture.
The grain of each adjacent layer is placed at right angles. The result is a stability greater than the original wood itself. The outside layer is selected for its texture and pattern.
THERE ARE many kinds of veneer cuts; some of the most handsome are obtained from portions of the tree in which the growth of the fibers is irregular.
For example, crotch veneer is taken from the forks in the tree trunk or the Y-shape of joined branches. Burlis are another variety that come from large wart-like growths on a tree. Bird's-eye veneer, caused by sharp depression in the annual rings of the tree, and buttwood veneer, taken from the point at which the larger roots meet with the stem of the tree, both produce interesting patterns.
Cleans Up Plastic
To remove stains and scuff marks from plastic utensils, rub gently with a bit of toothpaste on a soft cloth. Then wash and dry as usual.
Add Lemon Juice
Before you chop sticky fruits, put a few drops of lemon juice into the food to be chopped, and this makes your cleaning much easier.
Peel avocados and remove the seeds. Mash avocados in a bowl. Add 1/2-cup of the tomato pulp that was scooped out of the tomatoes, green chili, onion and garlic powder, salt and lemon juice. Stuff into tomatoes that were scooped out and set in lettuce cups made from lettuce leaves.
Garnish with a dab of salad dressing and sprinkle a dash of chili powder over all. Serves six.



Spotter's Job Is Important To Drycleaner

How important is clothing appearance? A recent survey of consumers found 68 per cent take from one to five garments to the professional drycleaner each month, and 57 per cent visit their cleaner two or more times a month.
The man who operates the dry-cleaning units must have a knowledge of fabrics and garment construction so as to know just how to clean each garment.
He must also understand the machinery and keep it operable, and he must know the chemistry of the cleaning solvents.

ONE OF THE highest paying jobs in drycleaning is that of the spotter. He inspects every garment after cleaning to see if spots need to be taken out.

He does his spot removal work with a battery of about 20 different chemical agents as well as brushes, steam guns, air guns, vacuum tubes and other gadgets which delight the heart of a technician.

He needs a knowledge of chemistry and textiles plus highly developed manual dexterity.
Finishers or pressers are the ones who take the wrinkles out and restore shape and drape to clothing. They use a variety of equipment from big steam presses to small hand irons.

INSPECTORS are sharp-eyed people who make sure garments are ready for return to customers. They must have an understanding of how clothes should look.

Antiquing Method Starts with Sienna

To antique a wood panel, combine raw sienna with a bit of raw umber and a touch of Venetian red. Dilute with thin glue sizing.
After the finish is dry, apply a thin coat of bleached shellac and rub down with fine sandpaper. Repeat until the surface is smooth. A final finish may be made of flat lacquer or rubbing varnish.

Join Two Tables

When you are using two card tables to make one long table for serving, it's a good idea to tie the neighboring table legs together, so there will be no gap where the tables join. This also makes them more solid and ensures greater safety.

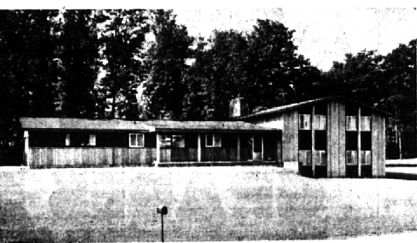
Make Double Milk

For extra milk in your family menu, use dry milk double strength in puddings and pie fillings, say Michigan State University home economists. You can also use milk instead of water in cooking cereal.

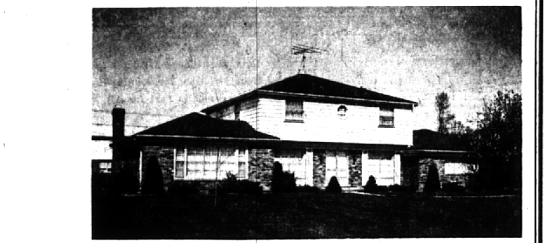
Waterproof, slip-proof and stain-proof quarry tile is a decorative and practical material for entryways and foyers.



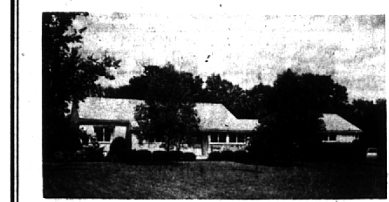
QUALITY APPARENT EVERYWHERE in this spacious four bedroom 2 1/2 bathroom home in Nottingham Forest near St. Regis and Valley Woods schools. Dining room, library and family room with second fireplace. Deluxe equipped kitchen, just like new and in absolutely immaculate condition. Many extras—YOU MUST SEE. Immediate possession.



IT WILL PLEASE YOUR EYE—so tastefully planned and decorated. Five bedrooms and 3 1/2 bathrooms. Dining room and 31 foot lower level family room with second fireplace. 32-foot patio for outdoor fun. Think carefully—BUT THINK FAST. Great value in finest area. \$46,500.00.



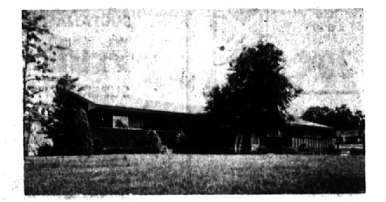
EXCEPTIONAL VALUE AND IDEAL NEIGHBORHOOD for children. Four bedrooms and 2 1/2 bathrooms. Dining room, library and 20' family room with fireplace. Deluxe kitchen with built-in oven, range, dishwasher and disposal. Carpeting and draperies. Excellent condition. Call for an appointment, we love to show it.



DELIGHTFUL FOR SMALL FAMILY. Three bedrooms, one is oak paneled and could be a library. In excellent condition and carpeted throughout. Recreation space in basement. 24' screened porch. In Village of BEVERLY HILLS. \$31,500.



EXCELLENT F.H.A. FINANCING WITH LOW down payment. Three bedrooms and 1 1/2 bathrooms. Living room with fireplace. Dining room. Full basement. Near Queen of Martyr's school in Beverly Hills. \$21,500.00.



IT'S \$23,900.00 and has all the features of a much higher priced home. Three bedrooms, two fireplaces, 19' family room. Built-in oven and range. Well cared for and a great neighborhood for children. Near new Meadowlake school on 3/4 acre! IT'S GREAT! \$23,900.



YOU'LL SAY, "I LIKE IT!" This immaculate four bedroom has just been redecorated inside and out. New carpeting and new draperies. 20' family room with 2nd fireplace. Living room with brick wall fireplace. Foyer with new brick planter divider and slate floor. 19' jaouled porch. Many new things you have to see, then YOU'LL SAY, "I'LL TAKE IT!" \$33,500.00.

Weir, Manuel & Snyder, Inc.

298 South Woodward Birmingham 644-6300
Birmingham, Michigan Realtors Phone: From Detroit 566-2323