

- ACROSS**
1. Fairy
 5. Stylish
 8. Ruse
 10. A Great Lake
 12. Speed
 13. Goddess of Power
 14. Cr. myth.
 15. Pias
 16. Mountain
 17. Cent.
 18. abstr.
 19. Painful
 20. Conjunction
 21. B&B
 22. Distast of Germany
 23. Song for two people
 24. Type of bay window
 25. Mohly
 26. From down lightly
 27. A wheel for a chair
 28. Food
 29. Mark on the skin
 30. Wife of Sharnash
 31. Christmas song
 32. Excitation
 33. More
 34. Dwelling
 40. Menda, as a base
 41. Actors' parts
 42. Rod for roasting meat

Answers to Puzzle Will Be Found on Page 7-D

By **BUD MAYBAUM**
Southern Michigan Bridge Association

One of my favorite partners, Claude Bennett, has been winning many a master point recently, without assistance from me. My hand for today was a defensive hand, wherein Claude, playing with Sally Simmons, found a way to defeat an almost "sure contract."

Most North and South pairs arrived at a three-heart contract, but those who played it at two hearts did make nice tricks. Maybe you will remember this hand and compare the results with yours.

Neither Vulnerable: Dealer: West.

1	2	3	4	5	6	7	8
9	10	11	12	13	14	15	16
17	18	19	20	21	22	23	24
25	26	27	28	29	30	31	32
33	34	35	36	37	38	39	40
41	42	43	44	45	46	47	48
49	50	51	52	53	54	55	56
57	58	59	60	61	62	63	64


PUZZLE NO. 814

'Adventure' Extends to Birmingham

During the month of July the Detroit Adventure Arts Festival symbol will be seen in store windows, on flags and on posters in many places in Birmingham.

Detroit Adventure is composed of 27 educational and cultural institutions including the Bloomfield Art Association, Cranbrook Academy of Art and Cranbrook Institute of Science.

DETROIT ARTS FESTIVAL



SYMBOL OF FESTIVITY
B'ham participates.

Often the best way to fend for yourself in traffic is to look after the interests of the other driver. The Institute for Safer Living states that courtesy, the willingness to consider the other fellow's viewpoint and being prepared to yield to another's thoughtless acts is defensive driving at its best. There is satisfaction in knowing that you may have helped to prevent an accident.

While you are on your vacation this summer, keep your tires inflated at the pressure recommended by the manufacturer. But when driving on smooth, fast road, pressures can be raised a few pounds for better fuel and tire economy.

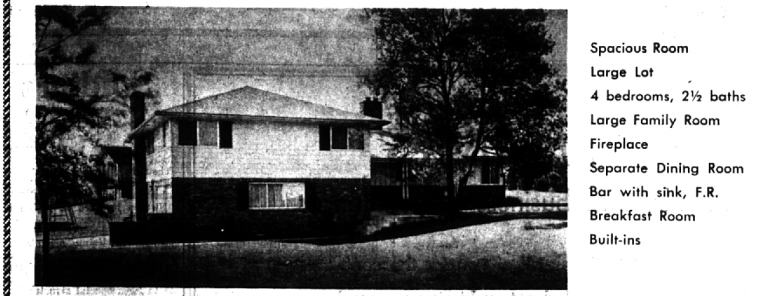
These organizations are cooperating on concerts, art exhibitions, plays, gallery tours, workshops and children's programs. The symbol for the arts festival was created by Marilyn Rudnick, a student of Robert Bach in the Art School of the Society of Arts and Crafts.

A brochure of events for the arts festival may be picked up at any of the member institutions or by calling the Detroit Adventure offices in Detroit.

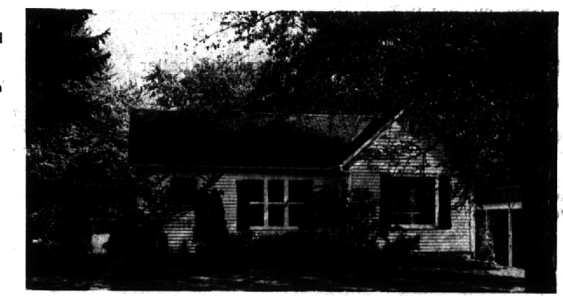
A subscription to The Eccentric brings you the community's top news events 52 times a year.

A Home Can't Change The Weather

BUT THIS HOME WILL MAKE YOU COMFORTABLE IN ANY TEMPERATURE



- Attractive Older Home at a price you can afford
- Studio Garage
- 3 small bedrooms, 1 bath
- Large spacious living room
- Large spacious dining room
- Kitchen with refrig and stove
- Large summer porch
- Lovely lot on ravine



- Spacious Room
- Large Lot
- 4 bedrooms, 2 1/2 baths
- Large Family Room
- Fireplace
- Separate Dining Room
- Bar with sink, F.R.
- Breakfast Room
- Built-ins

FRED PIERCE INC.
460 NORTH WOODWARD, BIRMINGHAM, MICH.
Midwest 7-1414

BRIDGE

in BIRMINGHAM

By **BUD MAYBAUM**
Southern Michigan Bridge Association

and Mrs. Edward Greenley, Ed Clarke and Bud Maybaum, Mr. and Mrs. A. R. Bottler, W. B. Wagner and John Breed, A. B. Johnston and Terry Johnson.

John Meske and Ed Weller, Betty Laewig and Jack Farrell, Jane and Ken Cook, Steve Thumser and Steve Taylor, Ralph Tyson and Keith Kelly, Mr. and Mrs. Dave Buskirk, Dr. and Mrs. Gerry Walker, Dorothy Kelly and Margaret Lockwood, F. A. Webber and William Axler.

R. A. Laewig and T. A. Greenfield, Hilda Murphy and Esther Clarke and Adele Taylor, Burns Strauss, Phyllis and Jack Malstrom, Dr. and Mrs. Lutz, Jerry Heffling and Art Bayer, Charlotte and Max Grant and Tom Crum and Jim Crabb.

- ONE WRECK** from today will be our Southern Michigan Bridge Association Sectional Tournament at Port Huron in the Harrington Hotel. We will start off on Thursday evening, July 9, with the men's team of four and the women's team.
- We will have complimentary cocktail parties both Thursday evening and Friday evening. Saturday we will have an excellent dinner between the afternoon session and the evening session, and on Sunday we give a continental breakfast from 11 a.m. till game time.
- Please spell your name correctly on the entry slip so that I will have it properly in this column as a winner.
- Also hope you plan ahead for the Summer Nationals at Toronto, Ont., Canada. This tournament runs for 10 days starting the last week end in July. I hope to cover this tournament for your name as a winner. The Summer Nationals is the big one.

- NORTH**
- ♠ A 6 4
 - ♥ A 9
 - ♦ J 9 4 3
 - ♣ 8 7 4 2
- WEST** (Claude Bennett) (Sally Simmons)
- ♠ 8 5 3
 - ♥ 8 4 2
 - ♦ 8 7 2
 - ♣ A 10 9 5
- EAST**
- ♠ K J 9 7 2
 - ♥ K 7 5
 - ♦ K Q 10
 - ♣ 6 3
- SOUTH**
- ♠ Q 10
 - ♥ Q J 10 6 3
 - ♦ A 6 5
 - ♣ K Q J

The bidding: West North East South pass pass 1 ♠ 2 ♠ pass pass 2 ♠ 3 ♠ all pass Opening lead: 8 ♠

This hand appeared as just another uncolorful hand, but when the North player saw the score of others and his score, he was dumbfounded.

Claude arrived at the usual lead of the eight of spades, which the declarer played low from dummy, and Sally won with the King. She now led her six of clubs—which Claude's ace was the winner. He now made the "killing" lead of a trump.

The declarer had to play low from dummy, and Sally won this trick and returned a trump. Declarer was now unable to discard a diamond on the good spade and therefore, went down one trick.

It may also be noted that had Claude ducked the club lead of Sally and played the 10 of clubs the declarer would have discarded a losing diamond on the ace of spades, but when Sally took the king of trump and played her second club, Claude could take this trick and return a club for a ruff and he held the hand to two hearts and down one.

OTHER RECENT winners in Birmingham tournaments include Pat and Herb Beyer, Ollie Swarwalder and Greta Shepherd, Mr.



Conveniently located within walking distance of schools and transportation. Well maintained with new gas furnace and water heater. Pleasant living room, large kitchen, two bedrooms and bath on first floor, huge third bedroom on second floor. A lot of house and good value at \$11,500.



Two houses in one! A mother-in-law wing was added in '61, complete with two bedrooms, two baths, kitchen and patio court. The main house has two bedrooms, two baths, library, studio ceiling family room, full basement. Hallway connects the two units. Beautifully decorated throughout. Delightful garden and patio. Near Oakland Hills Country Club on a rolling site.



As appealing as its setting. On a quiet court with privacy and seclusion. The spacious foyer leads right and left to deep windowed living room, a step-down circular dining room, and beamed ceiling family room. Large master bedroom, bath and study on main level, on the lower level two bedrooms with connecting bath. A delightful terrace room opening to a huge, walled patio. Unique and completely charming.



Fronting on Chalmers Lake with a beautiful view the length of the lake. Superbly built and well arranged. Unusually large living room across the rear, delightful screened porch with barbecue, master bedroom and bath and paneled second bedroom. In the front a third bedroom, hall bath, wonderful family room with fireplace, and excellent kitchen. Walk to schools. \$44,900.



The rolling fairway of Bloomfield Hills C.C. becomes the "back yard" of this inviting Contemporary house — a setting rarely to be found. Informal in plan, and excellently laid out for easy, relaxed living. Large living room with ledgerrock fireplace wall, paneled family room, screened porch and kitchen overlook the fairway; three bedrooms, 2 1/2 baths, large utility room. Magnificent trees, outdoor patio with barbecue. \$44,900.

MAX BROOCK INC.
1895 - 1964
300 S. Woodward
Open daily 9-8
Saturday 9-5
MI 4-6700