

# HOMEMAKING

## DOWN TO EARTH

By ALICE WESSELS BURLINGAME  
Special Writer

### Is Your Garden Wearing Sunday Best for Company?

At this date your garden should look well groomed and all ready for visitors. Let's check off a few items.

Have you used an edger around the perimeter of the flower and shrub beds. This technique will always frame the chosen plants within the planting. Inspect the shrubs. Have you clipped back into the plant to allow more sunlight? New growth has a way of robbing perennials and annuals of their main ingredient, sun; yes, let's add water as being equally important.

Watch those shrub branches which interfere with the natural, graceful growth of evergreens. If those shrub branches poke the evergreen for any length of time, the evergreen will shed its needles and branches where the interference occurs. At our house we are constantly removing earlier planted shrubs to let the evergreens to be "king."

DO YOU HAVE a dog who prefers to take his siesta in your flower beds? You can fix that rascal by placing stones the size of a fist in his favorite reclining locations. Hugging dogs seem to like choice flower beds best for a snooze location.

Long spans of flowers can look dull to the eye unless you have a vertical line or an object of sculpture to arrest the eye. The vertical line can be achieved by a flowering crab, a wisteria tree, purple leafing plum or many others.

IF YOU WISH art interest you can always add a bird bath (keep

it filled with an interesting rock for birds to light on). A sun dial is always a asset.

One of those gas lights would assure night interest in a colorful flower bed. Upon second thought, I wonder if the lamp would shed enough light to affect the plant cycle. They have to have so many hours of darkness to set their buds. Is there a local who could give us a report?

If you are an adventuresome soul, you would enjoy going to a junk yard and securing a piece of

metal with interest to use as art. Driftwood is also good to use with recent plantings to enrich its contour, such as hens and chickens.

MANY OF YOU will be going to the New York World's Fair this year. By all means encourage young people to go as it will aid their school assignments, both at the high school and college level.

But take this tip; let the young people explore the show at their own pace. The best shows are free, and the meals are reasonable.

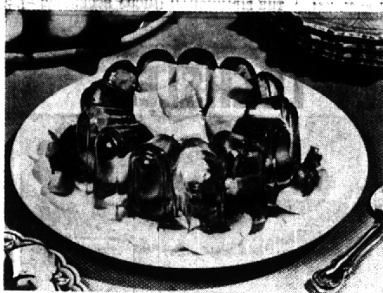
It is wise to go with reservations. Study the map of the fair area, plus the transportation service, and you probably won't have too much trouble finding the shelter you prefer.

Just remember to plan on at least one night until 11 p.m. so you may enjoy the lighting. With such a program you would think in terms of arriving at 4 p.m. as the eye is only capable of assimilation for about six hours.

THE VATICAN Pavilion has the most important piece of art, in marble, a 465-year-old masterpiece, executed in Michelangelo's youth: The Pieta. The staging in a setting of midnight blue emphasizes the spiritual significance of the sculpture which depicts the body of Christ in the arms of His mother just after He was taken down from the cross.

You observe it from one of three moving platforms, and if you can show a special interest in sculpture, you can entice the guard to allow you to study its grandeur on the top level which is stationary.

When you visit The Pieta, you will feel enriched by the experience. The Fair is not the place for young children. There is so much which would be beyond their range of understanding.



SUMMER COOLER CAN BE SALAD OR DESSERT

## Tasty Good Time, Peaches and Lime

A molded gelatin dish has become as traditional an item on picnic, buffet and patio tables as cold meats and potato salad.

Here's a versatile combination of tart lime flavor plus the sweetness of fresh peaches; versatile because it can be served as either a salad or a dessert.

Served with mayonnaise, perhaps touched with a bit of mustard, it's a salad. Whipped cream, sweetened with peach juice and served separately in a bowl, makes it a not-too-sweet dessert.

**PEACH AND LIME RING MOLD**  
2 regular size packages (3 ounces lime flavor gelatin)

2 cups boiling water  
2 cups cold water  
2 tablespoons lemon juice  
1 cup sweetened sliced fresh peaches.

Dissolve gelatin in boiling water. Add cold water and lemon juice. Chill until slightly thickened. Reserve 1 cup of mixture. Fold peaches into remaining gelatin and pour into 1-quart ring mold.

Place bowl of reserved gelatin in bowl of ice and water. Beat with egg beater until fluffy and thick. Pour into 8x8x2-inch pan. Chill until firm.

Unmold ring of gelatin onto serving platter. Cut whipped mixture into cubes and fill center of ring. Garnish ring with additional sliced peaches and mint leaves. Makes 8 servings.

## Sweet Baked Goods Are More Popular In Last 10 Years

Today's shopper will find a wide variety of sweet baked goods at grocery stores. Sweet baked goods include such food as cakes, cookies, doughnuts, pies and other pastries.

The volume of sales for such products has risen about 60 percent in the last 10 years, says the district extension agent, Mrs. Josephine Lawler.

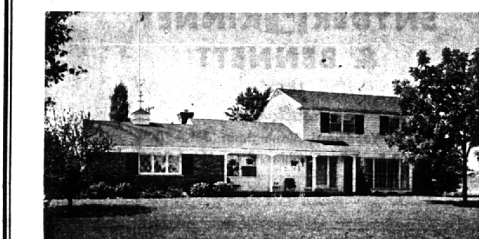
These products save the home-maker time when compared with the home prepared product but are usually more expensive.

## Baby Begins Junior Foods at 7 Months

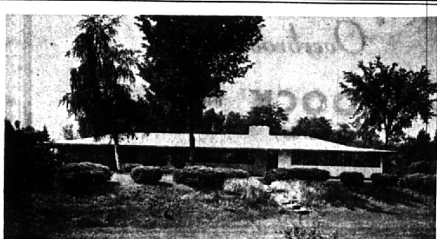
Sometime between the age of seven to nine months, a baby can usually be introduced to junior foods.

You'll find many favorite strained foods available in a junior version, as texture is the chief difference between the two types. Junior foods are coarser, to enable baby to learn to chew.

Start with fine-textured junior foods, such as puddings, fruits, or the 100 per cent meats. For the first few feedings, you might also want to combine strained and junior foods so that the baby recognizes familiar tastes more readily.



**JUST LISTEN!** Three bedrooms, 2½ baths, dining room and library (could be a 4th bedroom). Terrific 18 foot family room with second fireplace and Andersen window-walls. Recreation room. Great kitchen with all the built-ins and New-Tone blender. Intercom system plus AM-FM radio. Built in 1960. Call now to see it—it's a TERRIFIC VALUE AT \$41,900.



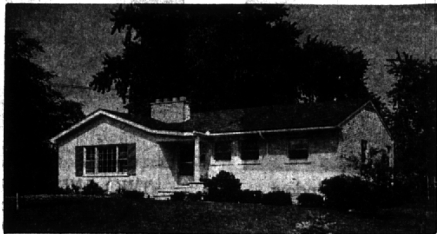
**FIVE ACRE ESTATE ON WING LAKE ROAD.** Two bedrooms and two bathrooms. Twenty foot family room and 38 foot porch. All windows are Thermopane. In excellent condition. Very unusual and offered at a special price.



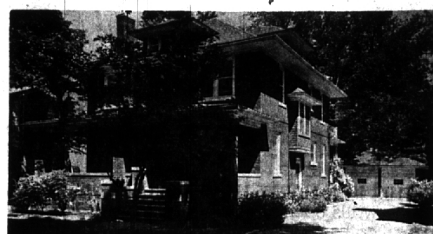
**SPACIOUS AND DELUXE TO THE LAST DEGREE!** Four large bedrooms, 3 bathrooms, powder room and lav. Dining room and 20 foot paneled family room with second fireplace. 24 foot glassed-in porch. Large kitchen with all built-ins. AIR CONDITIONED. Aprilair humidifier. Entire lawn with sprinkler system. Auto-garage door opener with 2 controls. Beautiful place to live—IN BLOOMFIELD VILLAGE.



**TREMENDOUS VALUE AND NEAR SHOPS!** Five bedrooms, separate dining room and beautiful 25 foot paneled family room with built-up fireplace and built-in refreshment bar. Great kitchen with built-in oven, range, dishwasher and disposal. Carpeting, draperies and intercom included. \$34,500.00.



**YOU CAN WALK TO CRANBROOK CORNERS** from this three bedroom two-bath ranch. Delightful family room with studio ceiling and second fireplace. 21 foot (heated) porch. 16 foot play room in basement. Many unusual features. In superb condition—it's a PLEASURE TO SHOW.



**LOTS OF KIDS? LUCKY YOU!** Five bedrooms and walking distance to Derby and Adams schools. Living room and dining room each with bay. Master bedroom also with a bay. Third floor playroom. In excellent condition. \$29,500.

# Weir, Manuel & Snyder, Inc.

298 South Woodward Birmingham, Michigan. Realtors  
Birmingham 644-6300  
Phones: From Detroit 566-2323