

# Nocturnal Visitor Teaches Lesson

**EDITOR'S NOTE**—This is the first in a series of articles by Birmingham resident Audrey Marrison who with her husband Philip and three children, is camping in the Southwest. By AUDREY MARRINER Special Writer

Our first night out at Fox Ridge State Park near Greenwood, Ind., we had a nocturnal visitor who had quite a feast on our bread, potato chips and seasoned rice.

He was a clever little varmint, as he managed to open the beer case in which we had our packaged food stored. Thus was camping lesson number one learned—store all foodstuffs at night in the trailer.

We spent an interesting two hours at the outdoor National Museum of Transport in St. Louis. Here we were free to climb aboard many old steam engines, trolley cars and buses. Craig had a real ball while Phil was disappointed that the engines were too close together for photographing.

**THREATENING CLOUDS** finally let loose with a vengeance, and we motored for the next two nights at Carthage, Mo., the hitching post capital of the world, and Memphis, Tex., which must be famous for something, although we couldn't find out for what.

At Couches Dam State Park, a manmade reservoir 32 miles from Tucumari, N.M., the children cooled off by swimming fully clothed in the muddy water. The water level had dropped

12 feet in the last two months as no rain had fallen here and water had been released for irrigation.

**THE CAMP STORE** owner was operating one of Dr. Krick's silver iodide bars into crystals that are released into the air. He told us these units are placed in many areas and put into operation upon receipt of a call from Denver. Many other campers were

drying out clothes, sleeping bags and tents, so we were glad we had not camped the previous night at lovely Quartz Mountain State Park near Vinita, Okla.

A short run got us into the new camp ground at Bandelier National Monument, 10 miles from Los Alamos, before lunch. We pitched camp under a gigantic pine tree but soon found we had neglected to look for trees positioned to give shade in the late afternoon—lesson

number two. **AN ADORABLE** blond female Park Service Ranger was our guide on the tour of the Pueblo Indian cliff ruins, or talus villages, along the walls of Frijoles Canyon.

We climbed a series of five long ladders to Ceramohai Caves. Our knees were shaking at the completion of the backward descent.

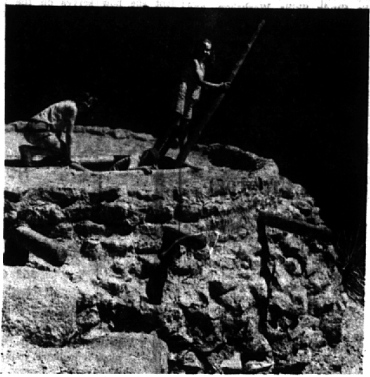
The next morning we hiked to the Falls of the Rio de las Frijoles and on to Bean Creek's confluence with the Rio Grande. Our new individual water canteens were much used on this five-mile round trip.

The terrain at the Rio Grande was practically all cactus and piñon juniper, while park headquarters is in tall pine country. Surprisingly, Craig and Susy turned out to be the best hikers and first to soak their canteens in the creek each time the trail crossed it.

**INTERESTING SIGNS** noted by the children so far are "Papa, Mama, teen and baby burgers," a drive-in in Indiana, and "Do Not Shoot At Wires," hanging from a utility pole along U.S. 66 in Oklahoma.

Today we'll visit the museums, historic sites and artists' workshops in Santa Fe after stopping at the San Ildefonso Pueblo, home of Marie Martinez, Indian potter.

Tomorrow we'll take a side trip to Chama where we'll watch the loading of the Rio Grande's irregularly scheduled narrow gauge freight train and then follow it up to Cumbres Pass.



**MARRINER CHILDREN VISIT CLIFF RUINS**  
Where Pueblo Indians made their homes.

## Area Specials Registered for Theatre School

The Cranbrook Summer Theatre School will open its 23rd season Monday with 62 local residents among the 85 students registered. Six of the staff of 26 also will come from Birmingham and Bloomfield Hills.

Students registered are Anne Douglas, Kirklyn Hall, Robin Montbach, Alice Colombo, Cindy Cahn, Pattie Harling, Erin McKenna, Barbara Konzelman, Carol Farison, Vanessa Beer, Carolyn Thomas, Mary Jane Hilder, Pamela Bowen.

Maggie Greenhaigh, Cory Bender, Kay Farison, Susan Hender-

son, Chalyce Brown, Carolyn Green, Carol Eilman, Molly Henderson, Judy Restello, Amy Mullen, Laurie Coopersmith, Mary Peirce, Sandy Mansfield, Jean Marie Harlan.

**DIANE DAVISSON**, Marcia Elise Reindel, Jill Montbach, Nancy Atkins, Ellen Edmondson, Kathy Spalding, Lesa Whitton, Susan Goldsmith, Donna Eilman, Barookie Farrell, Brooks Murray, Cristine Denison, Anne Reddig, Hope Williams, Kathie Irwin, Susan Bones, Sally Kelly, Larry Malome, Jonathan Miller,

William Thomas Lee, Jay Scott Harlan, William Sneed, Dennis Williams, Jeff Williams, Doug Stewart, John Tyler, Mel Kramer, Robert Keith, Dan Gayle, Scott Boyer, Steve Porter, Kenneth Redd, Jim Wood and Terry Lambert.

**THE THEATRE** School in the Greek Theatre offers a course in voice, diction, make-up, dancing and all the theatre arts, plus weekly participation for all in short plays and eight full-length

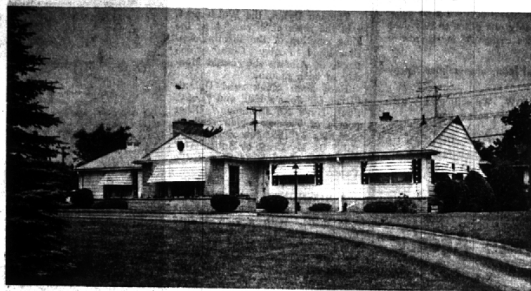
performances at the season's end. There are also informal Monday performances of student plays with invited guests. All operations are in and around the Greek Theatre at Cranbrook.

The course carries school credit for older students who wish it and has been accredited by some institutions of college rank.

Staff members from the area include Robert Horner of Bloomfield Hills, Mary Elizabeth Bunt, Sherry Lawton, JoAnne Whiston, Mrs. Paul Geiger and Mrs. Thomas Kelly.

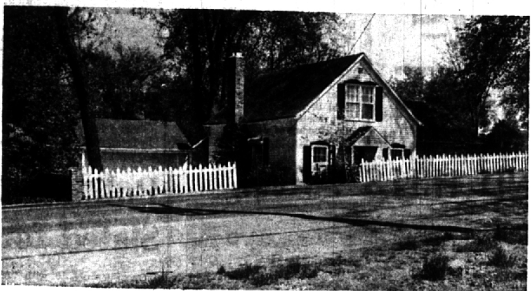
June 25, 1964 THE BIRMINGHAM (MICH.) ECCENTRIC 3-D

## GILBERT LAKE PRIVILEGES



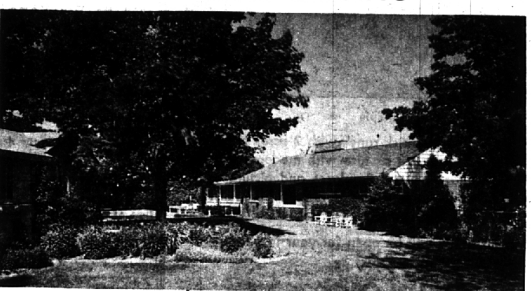
Delightful "small" house with big rooms. 23 x 17 living room with appealing fireplace, spacious dining room overlooking garden. Well planned kitchen with breakfast area, large utility room and lav. off rear hall. Three bedrooms — one paneled in mahogany. Brick and aluminum construction for low maintenance. Beautiful, landscaped site with circular drive. \$27,900.

## EARLY AMERICAN CLASSIC



Tradition, history, charm in the quiet Village of Franklin. Built originally in 1820, modernized and added to with dedication to authenticity in architectural design. The high-ceilinged living room (13x29) runs the length of the house. The deep windowed dining room calls for a harvest table laden with "goodies". Master bedroom and bath are on the first floor, two other bedrooms by way of a hidden stair on second floor. A story-book house in a picturesque setting. \$26,500.

## PARK-LIKE SETTING



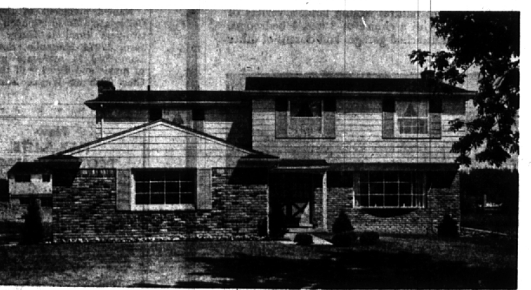
Over an acre of landscaped beauty with specimen planting, including peach, pear, and apple trees. In its own fenced area is a 20 x 40 pool, garden house and patio. The house itself is excellently planned with fireplace in both living room and family room, three sizeable bedrooms, work-easy kitchen, large utility room and a glassed enclosed porch. Many, many extras add to comfort and liveability. \$39,900.

## WALNUT LAKE FRONTAGE



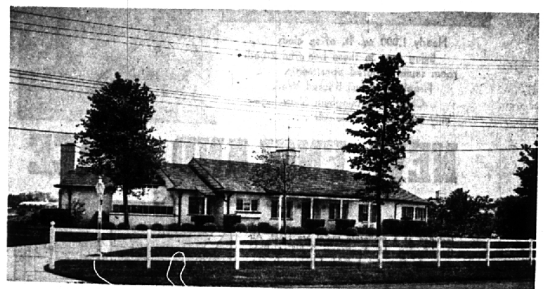
Through the trees a gorgeous view across the lake, and down a gentle slope, 100 feet of sandy beach. The plan is unique — there are three bedrooms and bath on the first floor plus a master suite on upper level. Large living room, screened porch, sizeable kitchen on first floor, paneled family room with bar and brick fireplace on the lower level. A wonderful family home that offers year 'round fun and recreation. \$39,500.

## BETTER THAN NEW

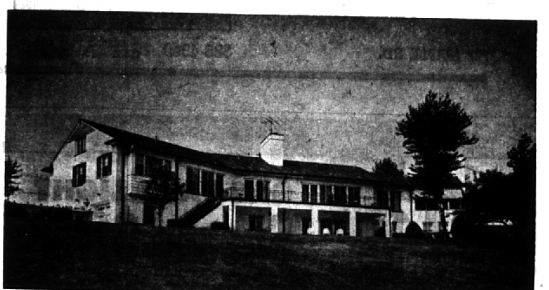


Just finished with the hard work—lawn, landscaping, etc., and then transferred! The new owner will benefit. Excellent location in North Adams area, close to schools. Four bedrooms (the owner's is huge) two baths and lav. Superb kitchen, 1st floor laundry, wonderful family room, space in basement for rec. room. \$33,990.

## On Beautiful Meadow Lake



From Meadowlake Road



From the Lake

We offer for sale one of the very finest homes in the Birmingham - Bloomfield Hills area.

Situated on lovely, clean, spring-fed Meadow Lake, this Bilevel Ranch-Type home is but 40 minutes from downtown Detroit by way of Northwestern Highway and Lodge Expressway.

The house is built at the top of a long slope which ends at the lake. The main floor of the house is 50 ft. above the level of the lake. A beautiful lawn of Merion Blue-Grass sweeps down to the water's edge.

**ON THE MAIN LEVEL**—nine lovely rooms including three bedrooms, two baths and powder room. **LOWER LEVEL**—recreation or family room, 15' x 38' with bar, 2nd kitchen and laundry, 4th bedroom, 2 baths, heater room, and 3 car garage 30' x 30'. Superb construction. Top condition.

PRICED FAR BELOW COST AT \$119,000. SHOWN BY APPOINTMENT.

**SNYDER KINNEY & BENNETT**  
INC.  
Realtors

239 S. Woodward, Birmingham, MI 4-7000

32740 Franklin, Franklin, MA 6-9600

MAX BROOCK INC.

1895 — 1964

300 S. Woodward

Open daily 9-8

Saturday 9-5

JO 4-6700

MI 4-6700

