



### Franklin's First Village Band

Political rallies and socials in Franklin weren't complete in the late 1800's unless the Franklin Cornet Band was there to play. The band is reported to have performed regularly at supervisors' picnics as early as 1886. In the front row (from left) are George Gordon, Noble Gravelin, Eliza Farmer, Joseph Brooks and R. C. Cummings; second row, Judd C. Cummings, James Brooks, Bethune Bigelow and William Lett; and third row, Frank Gravelin, Arthur Bowden, Edward Smith, Russ Haskins, Edward

Roberts, Andrew Bowden, Joe Gravelin and Dr. John M. Rainey. Although the band's last notes were heard at the Redford races July 4, 1895, residents of Franklin find that a community band still plays on. The present one, the Franklin Village Band under the direction of Dr. Conrad Lam, will play at the annual Strawberry Festival and Band Concert presented by the Franklin Community Association from 3 to 5 p.m. Sunday on the Village Green.

### Area Pupils Play in Recital

Birmingham-Bloomfield area students took part in presenting an "Evening Musicale" last Friday in Pontiac. They are the pupils of Mrs. Everett E. Harris.

Participating in the program were Zoanne Allen, Lois Peltier, Peter Garwood, Patricia McGillivray, Christine Garwood, Leo Peltier, Mary Peltier, Dorothy Scott, Giles Garwood, Lou Anne Peltier, Jill Garwood, Robert McGillivray, Grace Garwood, Larry Peltier, Dallas Austin and Kevin McAlister.

Also playing were Barbara Wilson, Dennis Armitage, Mary Johnson, Ralph Allen, Connie Crannell, Patrick O'Brien, Linda Peltier, Gary Gibbs, Mary Armitage, Kevin O'Brien, Liana Peltier, Loretta Peltier, Lloyd Peltier, Sharon O'Brien, Jackie Curtis and Alice Buckley.

Others include Desmond McAlister, Patricia Walsh, Patricia West, Linda Slem, Jon Lehman, Julie Garwood, Marilyn Alexander, Carolyn Francis, James Durr, Hollis Gibbs, D. J. Kennedy, Sue Allen, Patrick Durr, Jodi Nouse, Bruce Hall, Jean Alexander and Paul Noble.

### Exhibit Paintings

The Detroit Historical Museum is exhibiting a history of Michigan in paintings through Sunday. Robert A. Thom, 6160 W. Surrey, Birmingham, has been commissioned by Michigan Bell to recreate through art some of the significant events in the rich and colorful history of Michigan.

### Conservatory Awards Dance Scholarships

Three four-month scholarships in classic ballet for the 1964-65 season were awarded by the Birmingham Conservatory of Music Sunday at The Community House, Birmingham.

Recipients are Beth Charlton, 10, daughter of Mr. and Mrs. Robert Charlton, 1792 Oak Drive, Birmingham; Lisa Cornelius, 8, daughter of Mr. and Mrs. Walter

Cornelius, 4144 Rouge Circle, Birmingham; and Ann Lark, 10, daughter of Mr. and Mrs. John K. Lark, 3929 Spur Hill Drive, Bloomfield Hills.

THEIR DANCE instructors, re-

spectively, are Mrs. David Kellam, director of dance; Sheila Collins; and Sally Foot.

Walter Schrott, director of the conservatory, presented the awards at an honors assembly following a performance by the Concert Dance Group of the "Kingbrook Ballet," choreographed by Mrs. Kellam.

**Colonial or Contemporary**

you'll find charm... comfort... grace... livability... in

**THE WARWICK**  
Featuring 4 big bedrooms, 2½ baths, 21-ft. living room, paneled family room, dining room, separate breakfast room with DorWAL, full basement, 2½ car garage.

9 Striking Models  
From \$24,400-\$39,000

Ranches, Colonials, Split-levels...artistically furnished by **ROBINSON FURNITURE CO.**

**BLOOMFIELD'S Hickory Grove**

**PRACTICAL HOME BUILDERS, INC.**  
Sales by Greater Bloomfield Real Estate Co. 6435 TELEGRAPH RD. Bloomfield Twp. JO 4-6400

### Potpourri

By JULIE CANDLER  
Special Writer

What a joy it was to hear the scholars applauded for their achievements as degrees were handed out at Seaholm High School Thursday.

Good old Birmingham parents and relatives showed a heartwarming appreciation for the young scholarship and award winners who spent long hours doing their studious best.

They boomed out their loudest hand-made thunderclaps when Judith Evelyn Steere, Diane Harrison and Robert Warwick Swanson, Jr., stepped up to receive their diplomas. After the long list of laurels read for each of the three by Principal Ross A. Wagner came the wonderful report: "With a straight 'A' record."

May each of those young scholars have the happy future he or she so richly deserves.

WE FOUND out what bluegrass is when we talked to Dick Marsh of 556 Bird Street, Birmingham, this week. You may have heard Dick if you're a WQRS-FM fan like your Pipeliner.

Dick is the voice behind the program at 4:30 p.m. Monday, Wednesday and Friday called "High Five." Dick calls it an "adult story hour," though it's officially a program of literature and tradition.

Dick is married to a talented girl named Carol, who appears with him on another WQRS FM program. They play music on "Midnight Special" from 11 p.m. to 1 a.m. on Saturdays.

We asked about the bluegrass when Dick said that it was going to be played at a concert he and Carol are giving.

ALONG WITH Warren Kennison, a University of Michigan student from Birmingham, Carol and Dick are holding a family concert of folk music. It's at 4 p.m. Sunday, June 21 at Wil-O-Way Apprentice Theatre, W. Long Lake Road at Telegraph.

They're going to do the kind of songs that both the kids and adults can enjoy, plus ballads, blues and bluegrass.

According to a well-known folk idiom, bluegrass is "folk music in overdrive," reports Dick. To produce it, you need a five-string banjo played in three-finger style, a fiddle or mandolin or both, a guitar, and a bass or second guitar played Hawaiian style.

When they all play mountain music together at a fast tempo—that's bluegrass.

DICK MARSH is founding president of the Detroit Folklore Society, which holds a hootenanny every summer Sunday at the city park in Oak Park. Dick and Carol are usually there from about 2 p.m. and invite folk lovers to join them.

"It's not the TV kind of hootenanny," says Dick. "We have a sing-along group, and we make it possible for players to pick up some fancy licks from the fancier players. We prefer our kind of hootenanny."

OUR BIRMINGHAM area writer's colony has grown to include another topflight penman, Peggy Cameron King. You've seen her articles and stories in big-circulation magazines, and you'll enjoy her warm personality if you're lucky enough to meet this new-comer.

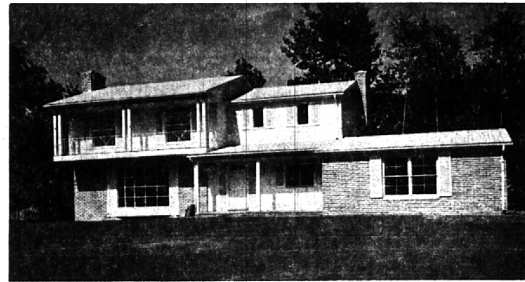
IF YOU hurry, you can still get in on some of the "Seven Lively Arts" courses at Oakland University this summer. Recommended by your Potpourri pipeliner, who has had the pleasure of the acquaintance of poet W. D. Snodgrass, Vanguard director William Gregory and choreographer Sandra Severo.

Each of them is delightful and incredibly knowledgeable in his field.



**APARTMENTS OF DISTINCTION**  
Luxurious two and three bedroom apartment homes from \$200 a month. Residues on request. (Stoopout Apartments)  
**FOX CROFT APARTMENTS**  
In Bloomfield  
Maple and Telegraph, Phone: JO 6-6216

### THESE ARE ONLY TWO OF OUR FOUR BEDROOM COLONIALS IN PINE LAKE WOODS ESTATES WITH LAKE PRIVILEGES - BLOOMFIELD HILLS SCHOOLS - WOODED LOTS



\$37,900.00

Completely Custom homes, 2½ baths, built-in ovens, dishwasher and disposal. Large family rooms with beamed ceiling and raised hearth fireplaces. First floor utility rooms.

OPEN 1-5 SATURDAY AND SUNDAY

CHARLES J.

**VAN HORN INC.**

From Birmingham MI 6-2400  
576 N. Woodward Ave.

From Detroit JO 4-5644  
Birmingham

# HALL & YOUNG



Showcase of homes  
REALTORS

BIRMINGHAM  
345 S. WOODWARD  
MI 6-7900

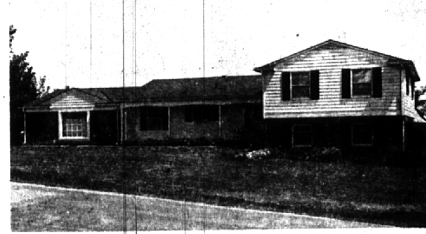
BLOOMFIELD  
4114 W. MAPLE  
MA 6-5900

OPEN TILL 9 P.M.



**BLOOMFIELD VILLAGE**—A handsome and substantial older Colonial with all the grace, spaciousness, and quality of its era. FIVE twin bedrooms, 2 tile baths plus lavatory, 3 fireplaces, enclosed porch, full basement, and 2 car att. garage. BEAMED CEILING LIVING ROOM! \$41,000.

**HIGH AND SCENIC**—Located in Bloomfield Hills, this impressive brick bi-level enjoys a sweeping hilltop view and will accommodate a large family. There are 5 big bedrooms, quiet library, family room plus recreation room and att. 2 car garage. Nicely detailed with a MYRIAD of WORK-SAVING FEATURES! \$67,500.



**ROOM TO GROW**—You'll find loads of play area for active children around this spacious Quad-level home in a pretty rolling area. Five privacy-planned bedrooms, 3 "easy-clean" tile baths, 22 ft. family kitchen, family room, basement rec. room, and att. 2 car garage. YOUR ANSWER! \$41,500.

**GENTLEMAN FARMER**—Do you have a yen for a small piece of land to grow things? Here's a large 1½ acre site planted with over 100 fruit trees and a comfortable, immaculate 3 bedroom brick ranch. Spacious family room, 2 car att. garage, and separate tool house. LOOK! \$26,900.

