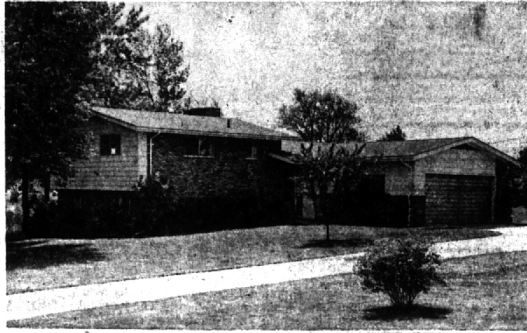


Calendar of Cultural Events

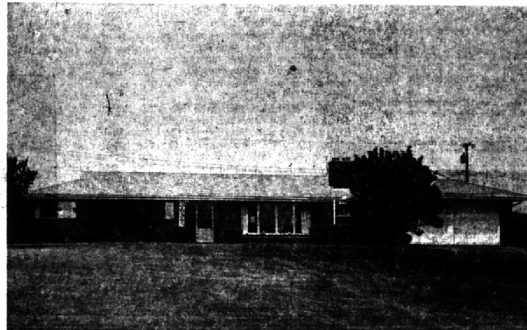
Thurs., June 11
SUMMER STUDENT SHOW — Work by eight departments of Cranbrook Academy of Art at Cranbrook Galleries, Bloomfield Hills. Tues.-Fri. 2-5 p.m.; Sat.-Sun. 1-5 p.m. Through mid-Sept. Admission charge.
RAVEN GALLERY — One-man show of landscapes by Stephen R. Beck, Kingswood School Cranbrook art instructor. Tues. - 5 p.m. through June 21.
OU GALLERY — First formal public show of Oakland University's permanent art collection, through June 25. Hours 12:30-4 p.m. Mon.-Fri. and 2-5 p.m. Sun.
'ONE-MAN SHOW' — Mosaic tile creations by Mrs. Gloria Robak at The Community House, Birmingham, through Saturday.
LITTLE GALLERY — Drawings by Clifton McChesney, Clifford West, John DeMartilly and Francis de Erdely. Hours 9 a.m.-6 p.m. through Saturday at 915 E. Maple, Birmingham.
BRIGADOON — Musical by St. Dunstan's Guild at 9 p.m. at outdoor Greek Theatre at Cranbrook, Bloomfield Hills. Admission charge.
BRIDGE — Birmingham Duplicate Bridge Club at 7:45 p.m. at Birmingham YMCA. Master Point Night.
JOSH WHITE, JR. — At 9:30 p.m. at the Raven Gallery, Birmingham. Admission charge.
CRANBROOK INSTITUTE OF SCIENCE — Three photo exhibitions: "Africa, Antarctica, and The Amazon," Alaskan earthquakes, and history of Cranbrook, through July 15 at institute on Lone Pine Road, Bloomfield Hills. Hours 2-5 p.m. Mon.-Sun. Beginning June 15, new summer hours: 10 a.m.-5 p.m. Mon.-Fri.; 1-5 p.m. Sat.-Sun. Admission charge.
BIRMINGHAM THEATRE — "The Pink Panther" starring Ava Gardner and David Niven. Also, "Love Is a Ball."
BLOOMFIELD THEATRE — "Wild and Wonderful," with Tony Curtis and Christine Kaufmann, plus "The Birds."
Fri., June 12
BRIGADOON — Musical by St. Dunstan's Guild at 9 p.m. at outdoor Greek Theatre at Cranbrook, Bloomfield Hills. Admission charge.
JOSH WHITE, JR. — At 9:30 p.m. at the Raven Gallery, Birmingham. Admission charge.
Sat., June 13
BRIGADOON — Musical by St. Dunstan's Guild at 9 p.m. at outdoor Greek Theatre at Cranbrook, Bloomfield Hills. Admission charge.
JOSH WHITE, JR. — At 9:30 p.m. at the Raven Gallery, Birmingham. Admission charge.
Sun., June 14
BLOOMFIELD ART ASSOCIATION — Reception opens exhibition of young people's art. Through July 5 at Birmingham Art Center, 1518 S. Cranbrook. Hours 2-5 p.m. Tues.-Sun.
JOSH WHITE, JR. — Hoote-nanny at 9:30 p.m. at the Raven Gallery, Birmingham. Admission charge.
LITTLE GALLERY — Group show celebrating gallery's 14th anniversary. Work by Joseph DeFrancesco, Laura Lawler, Edward Pracsukowski and Martha Slaymaker. Through July 11. Hours 9 a.m.-6 p.m. Tues.-Sat. at 915 E. Maple, Birmingham.
Mon., June 15
BRIDGE — Community House Duplicate Bridge Club at 7:45 p.m. at 380 S. Bates, Birmingham.
'ONE-MAN SHOW' — Mrs. Henry Beam displays her work in enameling and decoupage, through June 20 at The Community House, Birmingham.
Tues., June 16
BRIDGE — Birmingham Duplicate Bridge Club at 12:30 p.m. in home of Mrs. Stuart Murphy, 2424 Manchester.
THE RAVEN GALLERY — Folk singer Jimmy Carter at 9:30 p.m. at The Raven, 136 Brownell, Birmingham. Admission charge.
Wed., June 17
BRIDGE — Birmingham-Bloomfield Area Bridge Club at 7:45 p.m. at Birmingham YMCA. Master Point Night.
THE RAVEN GALLERY — Folk singer Jimmy Carter at 9:30 p.m. at The Raven, 136 Brownell, Birmingham. Admission charge.
Thurs., June 18
BRIDGE — Birmingham Duplicate Bridge Club at 7:45 p.m. at Birmingham YMCA.
THE RAVEN GALLERY — Folk singer Jimmy Carter at 9:30 p.m. at The Raven, 136 Brownell, Birmingham. Admission charge.
Fri., June 19
THE RAVEN GALLERY — Folk singer Jimmy Carter, plus The Loose Ends, a 10-piece skiffle and jug band, at 9:30 p.m. at 136 Brownell, Birmingham. Admission charge.
Sat., June 20
THE RAVEN GALLERY — Folk singer Jimmy Carter, plus The Loose Ends, a 10-piece skiffle and jug band, at 9:30 p.m. at 136 Brownell, Birmingham. Admission charge.
Sun., June 21
THE RAVEN GALLERY — Hoote-nanny with folk singer Jimmy Carter, plus The Loose Ends, a 10-piece skiffle and jug band, at 9:30 p.m. at 136 Brownell, Birmingham. Admission charge.

ALL TYPES, SIZES & PRICES



Country Tri-Level — LOVELY TREES on LARGE SITE.

Living room with studio ceiling and fireplace. Large family room with fireplace. Kitchen with breakfast area and Table and Chairs are included. Built-in stove and oven and wiring is in for dishwasher. 3 Bedrooms. 1 1/2 Baths. Carpeting, Draperies, Curtains included. Decorated in 1964, this is in superb condition. Picture-book Country Charm. Bloomfield Hills Schools—Priced at \$32,500.



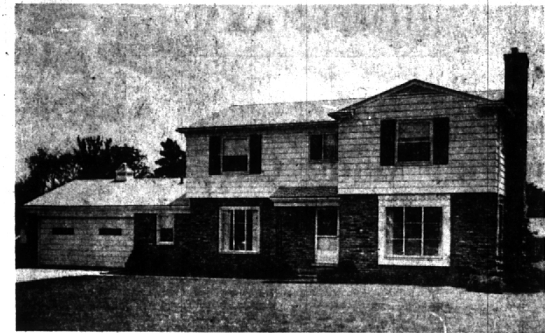
Acre-Plus — with beautiful spacious lawn and lovely landscaping.

Excellent view in all directions. 21 x 14 living room with fireplace. Dining room. Slate foyer. Family room. Large Screened Porch. Kitchen with dishwasher, disposal and breakfast space. Close to Chrysler Expressway for commuting convenience. Carpeting included. 2 Bedrooms, 1 1/2 Baths (one Bedroom is huge) Ideal for the small Family who want Country Living. Look at the price—\$28,000.



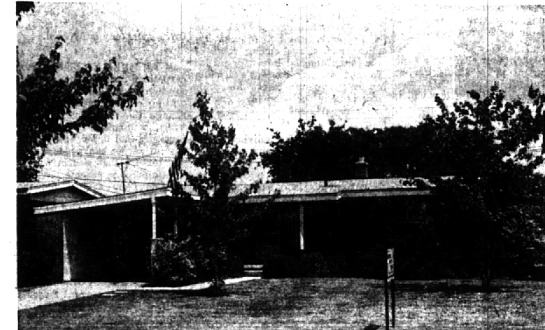
Country Ranch — 3/4 Acre Site in Bloomfield Heights.

Large living room with fireplace. Good-sized Separate Dining room. Family room with fireplace. Large Screened Porch. 3 excellent Bedrooms, 2 full Baths. ALL NEW CARPETING. ALL NEW DRAPERIES. Kitchen with built-in stove, oven, dishwasher, disposal. HOUSE NEWLY DECORATED and in impeccable condition. Not a scratch or a speck of dirt in the place. OWNER IS TRANSFERRED and PRICE HAS JUST BEEN REDUCED TO \$38,900.



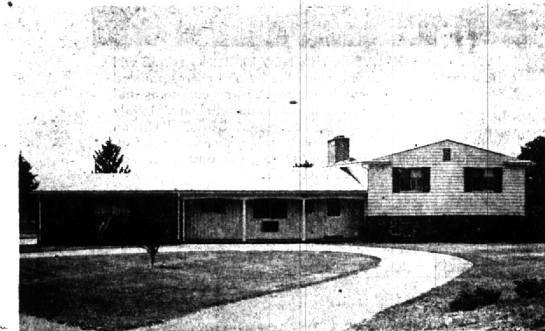
Center Hall Colonial — Charming area at edge of City and close

to all facilities. Living room with fireplace. Separate Dining room. Paneled 1st floor Family room with fireplace. Kitchen with all built-ins—Breakfast nook. 4 BEDROOMS. 2 Full Baths. 2 Lav. Full Basement. Large closets. New Carpeting. Lived in less than two years, this home is BETTER THAN NEW. Bloomfield Village and Seaholm Schools and about 1 mile to Brother Rice and Marion. Priced at \$42,900.



Contemporary — in the City of Troy and Birmingham Schools.

Living room and Dining all with picture window to rear. Kitchen has new vinyl tile floor. 3 Bedrooms, 1 full Bath. FULL BASEMENT with furred and wall-board lined walls. As you can see the lot is lovely with fine trees and landscaping. This is a PERFECT AREA FOR YOUNG FAMILIES—with winding paved roads, secluded from through traffic and close to Schools. Present 4 1/2 % mortgage can be assumed or Land Contract with \$5,000 down considered to qualified Buyer. PRICED AT ONLY \$20,900.



Tri-Level on Country Acre — Rolling terrain with wide

views. Black-top circular drive. 29 x 13 Living-Dining room with fireplace. 24 x 13 Family room with fireplace. Kitchen and breakfast space—built-in oven, stove, dishwasher, disposal. 3 Bedrooms (2 are very large) 2 Full Baths, Lav. Peterson windows with self-storing screens. Automatic garage door opener. 3 built-in room air-conditioners. Carpeting throughout. Draperies and Shutters. A custom-built, spacious home in excellent condition. Well priced at \$36,900.

Resident Receives Master's Degree In Architecture

Grant Hildebrand, 363 George, Birmingham, has been awarded a master's degree in architecture, specializing in architectural history, from the University of Michigan.

a B.A. in architecture. He is employed by Minoru Yamasaki architects in Birmingham and formerly worked for Albert Kahn.

In September Hildebrand will go to the University of Washington in Seattle as assistant professor of architectural history and design.

Simply spin your dial to Midwest 4-1180 and a professionally-trained ad-writer will help you prepare your message.

THE FAMILY WILL LOVE YOU for buying a Birch Wooded Site

of **BEAUTIFUL LAKE JAMES** FISHING—SWIMMING—HUNTING

As low as \$1400 with \$300 Down Low Monthly Payments

Lake James is in the heart of Michigan's lake area, 1/2 mile from Prudenville and Houghton Lake, yet it has all the privacy and seclusion of the Upper Peninsula. Just off Highway 75, less than 3 hours from Detroit. Attractive brochure sent on request.

KEATING OF BIRMINGHAM
 JO 6-3122 245 S. Woodward

OR
 Wherever you want to live
SEE US—



We are now affiliated with the largest intercontinental referral system in the entire United States. American Institute of Marketing Systems, Inc. Reputable—Reliable—Resourceful

SNYDER KINNEY & BENNETT
 INC.
Realtors
 239 S. Woodward, Birmingham MI 4-7000
 32740 Franklin, Franklin MA 6-9600