

Movie Guide

Parenteen Committee
Birmingham P.T.A. Council

MOVIE	Green Sheet	National Legion of Decency
Captain Newman, M.D.	A-MY	A-2
The Thrill of It All	A-MY	A-1
Sword and the Dragon		A-1
Lad, a Dog	GA	A-1
Lady in the Cage		B
Paris When It Sizzles	A-MY	A-3
Pink Panther	A-MY	A-3
Love Is a Ball	A-MY-Y	A-3

* recommended as superior entertainment especially for children
CODE
GREEN SHEET
These audience symbols are intended as broad guides to selection, and do not indicate either recommendation or non-recommendation of the films to which they are applied.
A Adults
MY Mature Young People
Y Young People (13 years to 16 years)
C Children (unaccompanied by adults)
GA General Audience
NATIONAL LEGION OF DECENCY
A-1 Morally Unobjectionable for General Patronage
A-2 Morally Unobjectionable for Adults and Adolescents
A-3 Morally Unobjectionable for Adults
B Morally Objectionable in Part for All
C Condemned
SC A separate classification is given to certain films which, while not morally offensive in themselves, require some analysis and explanation as a protection to the uninformed against wrong interpretations and false conclusions.

Plan Movie Theatre Gets Alger Award

A \$1 million theatre, Northland Cinema, will be built at Northland Center, it has been announced by the managers, Shopping Centers, Inc. The theatre will seat 1,350 persons and is expected to open in spring, 1965.

Birmingham architect Minoru Yamasaki, who resides in Troy, recently received the 18th annual Horatio Alger Award. He was one of 10 Americans to be presented with the award in the form of a bronze plaque.

ACROSS	4. Merry	25. Fish
1. Flat-bottomed boat	5. — of beef: a cut	26. Sailor: sl. abbr.
3. Edge	6. Main sleep	27. Needle aperture
10. Billows	7. Little devils	29. Thrifty
12. Plant used for fiber	8. African river	ad- min- istration
13. Sultan's decree	9. Parts of locks	32. Garden tool
14. Inanimate	11. State flower of Ohio	35. Remain- ing point
15. Solidity	17. Lofty	36. Scottish- Gaelic fabrics
16. Fuel	19. Expression of disgust	37. Shooter marbles
18. Southeast by south; abbr.	20. Particles	44. — Garawin pose.
19. Dance	21. Warp-yarn	46. Epoch
21. Exclamation	22. Roman house god	
24. Tiny	23. Corroded	
25. To have		
30. Now		
31. Gap		
33. Bars		
34. Knitter's yarns		
36. Outcast one: Jap.		
39. Born		
40. Pike-like fish		
43. Means of communication		
45. Property barrier		
47. Crowd		
48. Long hike		
49. Literary composition		
50. God of war		
DOWN		
1. A long drink		
2. To mind		
3. Egg-shaped		

Answers to Puzzle Will Be Found on Page 7-D

PUZZLE NO. 809



CLARE REEDER, executive secretary of the Troy Arts Festival, presents Miss Helen Wattles, lifetime resident of Troy, with a surprise telegram.

Troy Festival Lauds Retired Schoolteacher

The 1964 Troy Arts Festival, with its theme "The Teacher," is getting recognition from all directions.

Miss Helen Wattles, a lifetime resident of Troy and retired teacher, recently was honored by the festival committee at a dinner and received congratulations by telegram from Dr. Harold Dorr, dean of the graduate school at the University of Michigan.

Miss Wattles' brother, Morris, who also shared honors with her as a retired teacher, is treasurer of the Troy Arts Festival. The Wattles live in the original home built by their great-grandfather, who settled in Troy more than a century ago and for whom 17 Mile Road was named.

RECOGNITION ALSO is coming in the form of professional artists who will be displaying their work at the festival.

Glen Michaels, artist and a teacher at Cranbrook, and his stu-

dent will display a variety of creative accomplishments at the festival June 20-21 at Troy High School.

Barbara Darr, artist and wife of Dr. Harold Dorr of Ann Arbor, will show her own water colors.

Another artist, Carolyn Vosburg Hall, will submit "A Series of Drawings," informal poses of children and unusual character sketches. She is "Art for Art's Sake" columnist for The Birmingham Eccentric.

ANOTHER TEACHER-ARTIST from Cranbrook, Mary Riondon, will lend the festival a treasure from her private art collection, a famous painting by Arthur Perry of Massachusetts. Entitled "Landscape," it is an example of abstract art.

Also slated to be on display at the festival is a private collection of Israeli dolls owned by Sally Fields of Detroit. These dolls,

valuable works of art, depict the various phases of life in Israel—such as dolls representing the Biblical student, the actor, the newsboy. The collection was on display at the Detroit Institute of Arts for four months last year.

Anyone interested in submitting examples of art or craft work for the festival may obtain further information by contacting Mrs. De-losa Russell, 555 Trivway, Troy.

judge entries for the student talent show June 19, the evening immediately preceding the two official days of the festival, will be Pat Morris, WXYZ weather girl.

NEWEST STAR in the galaxy of professional people who will

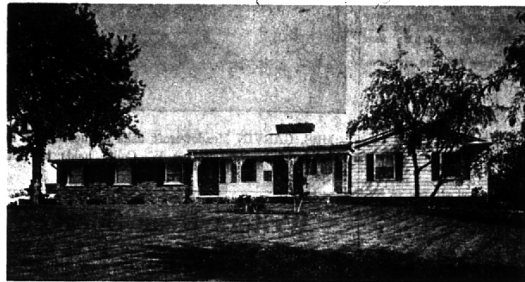
Birmingham Insurance Agency
114 S. Woodward

Representing:
AMERICAN INSURANCE CO.
EMPLOYERS GROUP
HOME INS. OF NEW YORK
NATIONAL UNION
OHIO CASUALTY CO.
TRAVELERS
ST. PAUL FIRE AND MARINE

MI 4-2422
"After We Sell We Serve"

OSCAR P. PETERSON
BRUCE F. RANDALL
FRANK W. WHITSON

NATIONAL REALTOR WEEK MAY 24-30 "A Better Home Thru A REALTOR"



If ever there was a "perfect" house, this is it. Unusual decorator touches create charm, from the superb farm kitchen with a rocking chair flavor to the large paneled activities room with brick fireplace, raised hearth and parquet floor. Bi-level in plan with three excellent bedrooms and two baths up, fourth bedroom and bath down (space for a fifth). Underneath the huge glassed and screened porch is a garden room for tools, bikes, skis and such. On a high site with screened rear yard.



Beautiful setting in an excellent location just north of Lone Pine Rd., in the Bloomfield Hills area. Superbly built and meticulously maintained, it is a pleasure to show. All four bedrooms are unusually large. There are three tiled baths and a lav. The wide-windowed living room has a woody view, the huge porch invites summer relaxation, and the paneled family room year 'round enjoyment. An excellently planned kitchen has built-ins and large eating area. Quality—beauty—location!



MAX BROOCK INC.
"Nationally Known Realtors"
300 S. Woodward
JO 4-6700 MI 4-6700

Open daily 9-8
Saturday 9-5

Events Calendar Is Published for Summer Months

Detroit Adventure's Calendar of Cultural Events, covering May, June, July and August, has just been released.

This travel guide to culture includes art exhibitions and gallery tours, lectures on art and literature, concerts, seminars, symposiums, conferences, folk dancing, ballet, theatre performances, puppet shows, children's movies, and adult films.

The events listed are not only from the 27 participating institutions which embrace Detroit Adventure but also from many other organizations which help to serve Detroit.

A DETROIT Adventure Arts Festival is planned by the 27 participating institutions through the entire month of July. Beginning at the time of the Freedom Festival, each week will see special Arts Festival events. A preliminary schedule of these affairs is in the current Calendar.

Calendars are distributed to all Detroit Adventure's participating organizations. These include locally the Bloomfield Art Association, Cranbrook Academy of Art and Cranbrook Institute of Science.

Honors for Artists

Gov. and Mrs. George Romney (of Bloomfield Hills) recently honored 120 Michigan sculptors, painters, poets, musicians and actors at the first in a series of dinners lauding creativity. The event was held at Henry Ford's Fairlane estate in Dearborn.

HALL & YOUNG

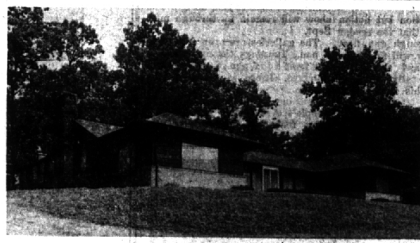


Showcase of homes
REALTORS

BIRMINGHAM
345 S. WOODWARD
MI 6-7900

BLOOMFIELD
4114 W. MAPLE
MA 6-5900

OPEN TILL 9 P.M.



A ONCE-IN-A-LIFETIME OPPORTUNITY to purchase a superbly designed and constructed residence complete with a 2700 sq. ft. special purpose building suited for the classic car enthusiast or other special hobbies. The main residence is completely paneled and air-conditioned with 3 bedroom suites, study, library, and 4 car garage. With the finest in equipment, it enjoys a wooded 5 acre site in the heart of Bloomfield. \$125,000.

IMPRESSIVE—Set on a high knoll overlooking QUARTON LAKE, this substantial brick Colonial is spacious and comfortable. FOUR excellent bedrooms, paneled family room, 2½ baths, large formal dining room, 30 ft. "yard-view" porch, and att. 2 car garage. FINE! \$49,500.



A SMALLER FAMILY will delight in this unusual 2 bedroom bi-level Ranch overlooking a scenic, wooded ravine. In addition to the spacious main floor living room, there's a huge lower level family room with fireplace and many built-ins, 1½ convenient baths, and att. 2 car garage. COOL AND PRIVATE! \$27,500.

MODERN FLAIR—Clean lined and immaculately maintained, this Contemporary Ranch is a spirit-lifter. There are 4 nice bedrooms with one paneled for optional library use, 2 sparkling tiled baths, tool house and fenced yard. Just one of the many extras is INDIVIDUAL ROOM ELECTRIC HEAT! \$25,500.

