

Citizen

(Continued from 1-A)

Wyoming Masonic affairs prior to his retirement.

DR. THORNBERRY came to Birmingham in 1905 as rector of St. James and under his leadership the church was consecrated on June 12, 1907. During his pastorate here, he also served a mission church in Royal Oak, many times walking all the way to conduct services.

During the first World War, Dr. Thornberry served as a chaplain with the 82nd Division of the Army

in France. He also was chaplain of the Wyoming State Penitentiary for three years.

He is survived by his wife, Ann Frances; two daughters, Mrs. Charles E. Coughlin and Mrs. Margaret T. Loftus of California; a son, the Venerable David P. Thornberry, archdeacon of the Diocese of Southern Ohio, and four grandchildren.

SERVICES TOOK place Monday in St. James Episcopal Church, with burial following in Woodlawn Cemetery, Detroit.

Memorials may be sent to St. James Theological Educational Fund.



THE CIVIC DESIGN Committee of Birmingham presented its plan for the Birmingham of the future to a group of residents at the Birmingham Country Club last Thursday night. From left are Gunnar Birketes, Owen A. Luckenbach, committee chairman, Harold VanDine, Kent Smith, Robert Ziegelman, John P. Morgan and Keith Brown. Back row: Baltazar Korab, F. Ward Ouradnik, CAC chairman, and Carl Luckenbach.

Concepts Ceremony

(Continued from 1-A)

committed a letter about its report.

"I'm bothered by the lack of specifics in the CDC letter," Breck said.

Commissioner Carl F. Ingraham indicated he might also write a letter to the group.

Mayor Charles W. Renfrew pointed out that some of the proposals made by the CDC were already under way such as the Chester Street widening, straightening of the Forest-Woodward intersection and planning of the widening of Oak between Hunter and Woodward.

The CAC called upon the city to establish an official body to organize the implementation of its recommendations.

ARCHITECT Carl Luckenbach, who made the presentation at the country club, said the city must have the "feeling of a small college campus."

Luckenbach said the people of Birmingham must have a place to meet friends, a place to take their children and a spot to watch painters at work.

He said Shain Park as it exists today is "not a pleasant place to go" but added it was a potential asset to the community.

"It is, however, mandatory that we separate the through traffic from the local traffic," Luckenbach said. The free movement of pedestrian traffic is a vital part of the whole plan, he said.

Luckenbach called the intersection of Maple and Woodward "a bleak spot." The CDC has suggested the closing of the intersection and the construction of a tall clock tower.

HE SAID implementation of the CDC plan would not require the expansion of the business district.

"Less than one-third of the central business district is developed and there is ample room for implementation of the plan," he said.

The CDC believes the program can be accomplished without the help of tax money and the revenue from new private developments would finance the City's share of the cost.

Luckenbach said the CDC's proposal was "only a concept" and "an approach" to future planning.

"The very root of its implementation is the plugging of Maple and the defining and enclosure of Shain Park," he said.

The completion of parking lot No. 7, the development of town houses and the chamber of commerce alley beautification program were also high on the list of "musts," Luckenbach said.

F. Ward Ouradnik, acting chairman of the CAC, told the country club gathering to remember to judge the ideas of CDC "on the total good they will do for Birmingham."

moved to Greenwood Cemetery because it had become a traffic obstruction.

AS PART of the Birmingham Centennial Celebration, the monument was moved back into the center of town.

The Rev. Howard E. Bull, Pillgrim Congregational Church, an ex-Army major, will deliver the invocation. James K. Flack will give a short history of the monument.

After the placing of a wreath on the monument, a three-volley salute will be fired by area American Legion posts and taps will be

sounded by bugler Carl Griesmer.

The group from Seaholm includes Bruce Nyberg, Kathy MacKenzie, Jan Biell, Diane Harrington, Robert Swanson and Jay Tennant.

Hugh McHugh, 608 Ruffner, Birmingham, historian of the Charles Edwards Post of the American Legion, will deliver the benediction.

IN ANOTHER dedication ceremony in connection with the centennial celebration a plaque was placed on an old mill grindstone placed at the site of the Old Griat Mill last Friday.

Mayor Charles W. Renfrew made the dedication of the plaque that reads in part: "On this site for 88 years stood a grist mill that ground grain into flour for the Birmingham community . . . it served local farmers until 1918."

Specials For Your



Graduate . . .

- 17 Jewel Watches at All Prices
- Ladies' and Men's Vantage, 17 Jewel From \$11.95
- Ladies' Waltham, 17 Jewel Special \$19.95
- Ladies' and Men's Croton, Stainless Steel and Waterproof, 17 Jewel Reg. 29.95 \$24.95
- Ladies' and Men's Wittnauer, 17 Jewel Reg. 59.95 \$39.95
- Ladies' and Men's Hamilton, 17 Jewel Reg. 75.00 \$59.95

Also

Accutron, Longines, Universal - Geneve, Eternamatic & La Coultre



The Time Shop

SEAN C. MONK
Certified Master Watchmaker, H.I.A.
Open Fri. Evenings

151 South dates, Opposite Post Office

MI 6-7377

Weaver's Articles Lack Taste, Understanding

To the Editor:
The recent articles by Ken Weaver of The Eccentric show a surprising lack of taste and understanding. What are Mr. Weaver's motives?

Perhaps by designating this as a rundown area he is setting the stage for our city commission to declare a necessity to pave the entire district at great personal expense to the many pensioners and other residents of this low income area.

Maybe his articles can be construed to mean that this hue and

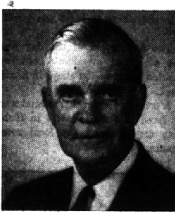
cry will in the foreseeable future lead to rezoning this area from residential to commercial.

ON THE other hand, Mr. Weaver may simply be a rabble rouser trying to increase the circulation of his good paper by raising the specter of squalor in the south end of our lovely town. If this is so I fear the circulation will be cut rather than raised by the printing of such utter nonsense.

However, Mr. Weaver writes well and as a managing editor of The Birmingham Eccentric certainly knows better. He just can't be as irresponsible as he sounds. The residents of this maligned area have a right to know if the ideas voiced are his or those of his paper. In the meanwhile, an apology or retraction is due.

MRS. TOM DEVESTER
1060 Bird
Birmingham

EDITOR'S NOTE—The opinions expressed in Mr. Weaver's "City Heat" column on page 1-B each week are strictly his own. They do not represent the views of the paper.



Trustee Candidate

Announcing his candidacy for the post of trustee for the proposed Oakland Community College is Wheeler G. Lovell, 1600 Apple Lane, Bloomfield Hills. Until his retirement, he was director of chemical research for the Ethyl Corp. in Detroit. He is current vice chairman of the Oakland Planning Division of United Community Services and on the Speakers Bureau of the Community College Citizens committee of Oakland County.

Getting ready to sell your car? Advertise it in the Classified Ads.

Exciting news from Triangle! Our display staff has just completed decorating our entire COLONIAL SHOP... over 20 sparkling room settings, completely coordinated, excitingly different... and featuring Michigan's largest display of famous



Sprague & Carleton®

makers of America's most beautiful Solid Maple Furniture

Triangle, originators of Michigan's first authentic Colonial Shop, has long been synonymous with the very finest in Colonial furniture . . . and now our new and completely redone Colonial Shop is wide open and ready for your inspection! A visit is a MUST for all lovers of cherished ancestral furniture. We invite you to browse through the more than 20 room settings, displaying DETROIT's most complete collection of authentic Colonial furniture, created by the finest master craftsmen, of SOLID MAPLE, SOLID CHERRY, SOLID PINE and HEIRLOOM MAHOGANY. For living, dining room or bedroom, whatever your needs may be . . . deeply comfortable and colorful upholstery, quaint accent pieces, antique accessories or unusual lighting fixtures, Triangle's Colonial Shop has them all! Please visit us at your earliest opportunity . . . open daily 10 A.M. to 9 P.M.



SPRAGUE & CARLETON pieces shown:

A. 54" Round, drop-leaf table, extends to 72", \$174.95
Cognac chair, \$89.95
24" Welsh cupboard, \$339.95
Hutch top with doors, \$149.95

B. 44" 4-drawer desk, \$99.95
Bookcase top, \$79.95
30" 3-drawer chest, \$72.95
30" Bookcase top, \$49.95
Sawto, foam cushioned, \$169.95
3-tier table, \$49.95

C. 68", 14-drawer Dresser base, \$244.95
Mirror, \$74.95
Night stand, \$99.95
Continental side headboard with frames, \$199



818 NORTH WOODWARD AT 1 1/4 MILE ROAD