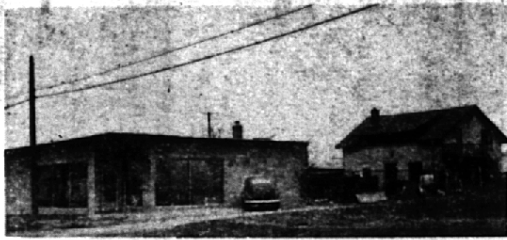


# WHAT A CHANGE . . . IN JUST 13 YEARS!



This is how our location on Adams Rd. looked only as far back as 1951, when we moved from the old house in the rear to the new building. Actually, we began business in the old house in 1946, some 18 years ago.



J. Fawcett Pro. Hardware in 1964—now in an almost solidly built up neighborhood. We salute Birmingham at this Centennial Time . . . and thank all our friends and customers for their wonderful loyalty and patronage!

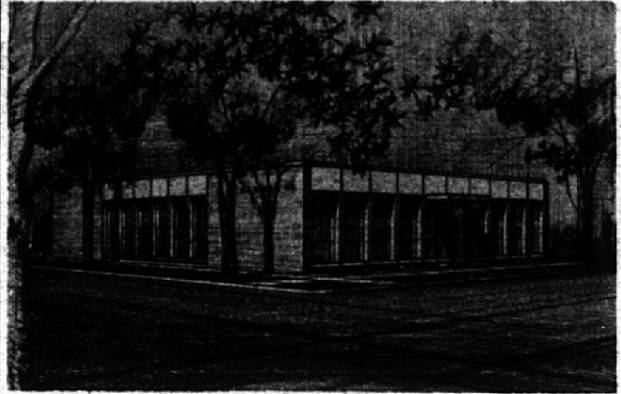
The Fawcett Family

- Hardware
- Paints
- Household Goods



908 So. Adams Rd. (1 Block north of Lincoln)  
8 to 6:30 daily; Fri. to 8; Sat. 'til 6; Sun. 10 a.m. to 2 p.m.

# Congratulations . . .



## To An Old Timer From A Newcomer!

We are proud and happy to be a newcomer to such a fine community. Happy Birthday, Birmingham!

— Established 1899 —

AUSTIN C. HARMON, President    STEPHEN C. MILLER, Vice Pres. & Treas.  
T. WALDO THOMPSON, Secretary

### C. M. HARMON COMPANY

REALTORS AND MORTGAGE BANKERS

484 PIERCE STREET

BIRMINGHAM, MICHIGAN

Midwest 4-7700

Mortgage Loan Correspondent



Entrance

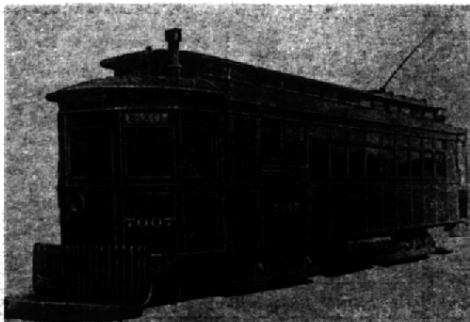


Rose Fence on Woodward Ave.

## Roseland Park Cemetery

WOODWARD AT 12 MILE RD.

Serving The Birmingham Area  
Since 1906



Old Funeral Car

PHOTO FROM BURTON COLLECTION  
Courtesy Detroit Historical Society

**Note:**

This old Funeral Car once carried funerals from Detroit to Roseland Park on the Detroit United Railway Line on Woodward Ave., turning around in Birmingham.