

# The Birmingham Eccentric

COMMEMORATIVE  
1864

# Centennial

EDITION  
1964

Birmingham's 100 Years of Incorporation

Section VIII—Miscellaneous

May 14, 1964

## Final Glance At Early B'ham



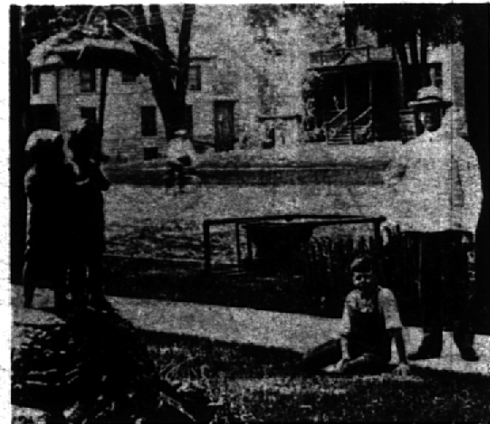
**BIRMINGHAM'S MARTIAL BAND IN 1914**  
John Heth (right) owned only bass drum in village.



**JENNIE KEYES, THE GEORGE MITCHELLS**  
Sartorial splendor of the Seventies.



**EARLY 'BIRDMAN' EUGENE HETH AND HIS BIPLANE**  
Birmingham airman flew exhibitions for Wright Brothers.



**UMBRELLA FOUNTAIN BEAUTIFIED**  
**'LIBRARY CORNER'**  
Site is now occupied by Cunningham Drugs.



**WELCOMING COMMITTEE AWAITED FIRST TRAIN'S ARRIVAL**  
When commuter service started here in August, 1931.

### IN THIS SECTION

Engines roared and fashions changed to keep pace with the times. See story, pictures, page 3.

Horses were needed to pull first trolley to arrive in Birmingham. See story, pictures, on page 5.

Oakland County residents were among the founders to the national Republican party. See story, picture, page 3.

County Democrats were forced to fight for their survival in the early days. See story, pictures, page 11.

Local youngsters are inspired to serve the community through the Girl and Boy Scout organizations. See stories, pictures, page 13.