



Frankly

we can't remember "way back when!"

Our memory (stretching just as far as we can) goes back only to 1953, when our first small ski shop opened in Ferndale. Time enough, fortunately, to grow up with skiing in this country, and earn a respected place in the ski world.

But while Birmingham is celebrating its Centennial Year . . . we can count in months our membership in the business community. We think of it as an added challenge . . . making a place for ourselves will take twice the trying . . . but you can bet we'll be working at it. Year 'round, we'll search out the unusual, the fun, the wearable sort of casuals we think you'll enjoy.

So here's to the second hundred years!

Bloomfield Shopping Plaza

Telegraph and Maple

15 YEARS

OUT OF A HUNDRED . . . IS REALLY NOT SUCH A LONG TIME! BUT . . .



It is long enough for us to realize very deeply that there is no place in America quite like Birmingham!

Our sincere appreciation to all our friends and customers for making our 15 years such happy ones! We are all looking forward to serving you to the best of our ability in the future.

The Baruhn Family

• Schwinn • Raleigh • Other Makes
Complete Repair Service

We Have Tandems!



BIRMINGHAM BIKE SHOP

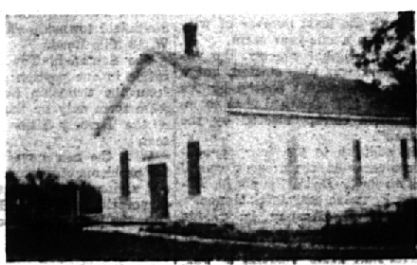
MI 4-6216

746 E. MAPLE RD.

(Between Hunter Blvd. and Adams Rd.)
Birmingham

FIRST BAPTIST CHURCH

WILLITS AND BATES
BIRMINGHAM, MICHIGAN



1873

1870 — Present church organized as "The First Regular Baptist Church of Birmingham"

1873 — First building erected on present site

Ministers:

Dr. Homer J. Armstrong

Rev. William W. Sutterlin

Rev. Charles J. Griffith



1964

Affiliated with American Baptist Convention
and National Council of Churches