

The Birmingham Eccentric

COMMEMORATIVE
1864

Centennial

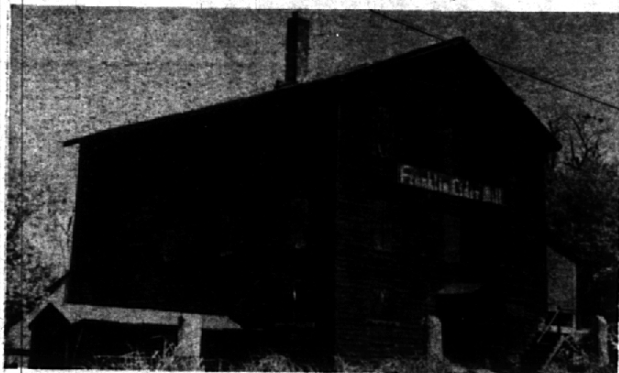
EDITION
1964

Birmingham's 100 Years of Incorporation

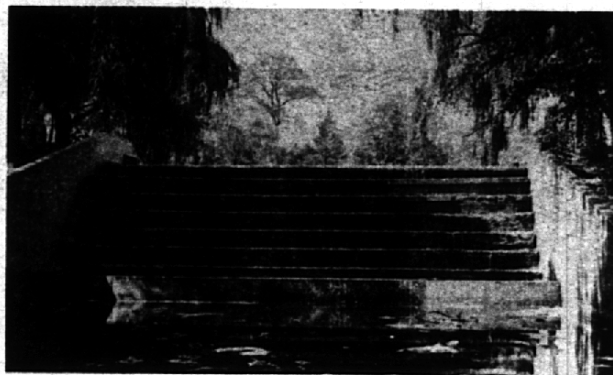
Section VII—Beverly Hills — Franklin — Lathrup — Wood Creek Farms — Bingham Farms — Southfield Township

May 14, 1964

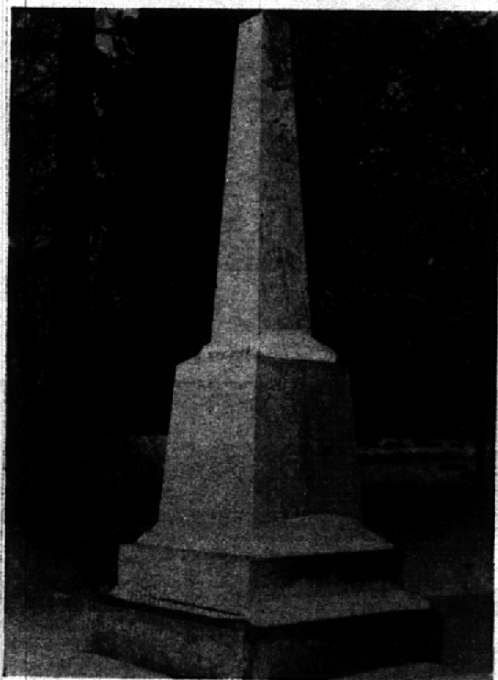
Landmarks Lend Clues To Past



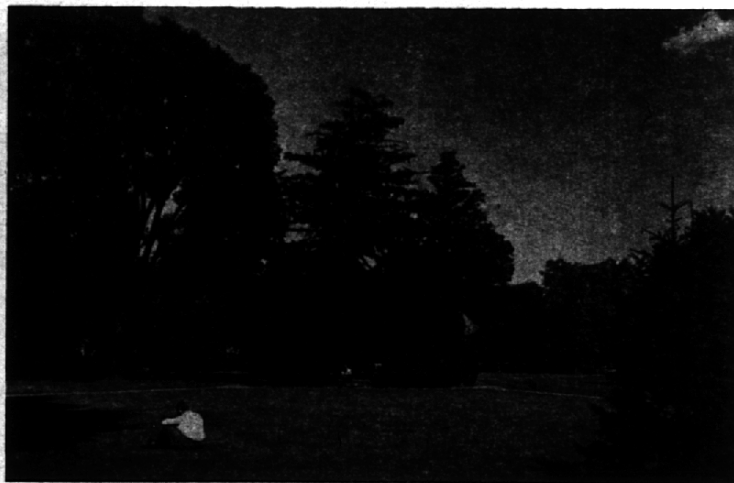
THE OLD FRANKLIN CIDER MILL
Built in 1837, it became center for farmers.



BIRMINGHAM'S QUARTON LAKE DAM
Pike by the basketful.



AREA'S TRIBUTE TO CIVIL WAR SOLDIERS
Monument honors men from four communities.



SHAIN PARK IN THE HEART OF DOWNTOWN
Large tree at left fatal victim to Dutch Elm disease.



THE HISTORIC FRANKLIN CEMETERY
Gravestones, barely legible, date back to 1829.

IN THIS SECTION

"The town that time forgot,"—Franklin, the history of its government, people and institutions. See stories, pictures, page 3.

One of Franklin's most exciting events each year is the Roundup. For a colorful account of its history, see story, picture, page 5.

Early in life, Louise Lathrup had a vision of building a "dream city." For the saga of how she fulfilled this ambition see story, page 7.

The Village of Beverly Hills is known as a quiet residential community. For the story of how it evolved, turn to page 13.