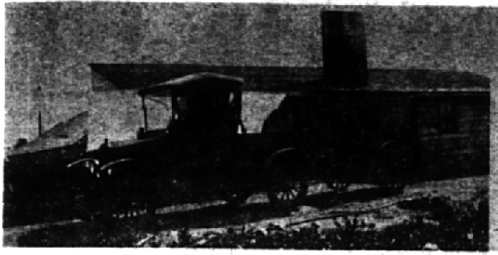


**It's Been A Long Time!**



BELL GREENHOUSES IN 1915 WHEN WAGONS WERE TRAILERS!



BELL GREENHOUSES IN 1964 (49 YEARS LATER)

Best wishes to you, Birmingham, on your 100th Birthday! Our sincere appreciation to all our friends for making our growth possible!

In Birmingham, it's

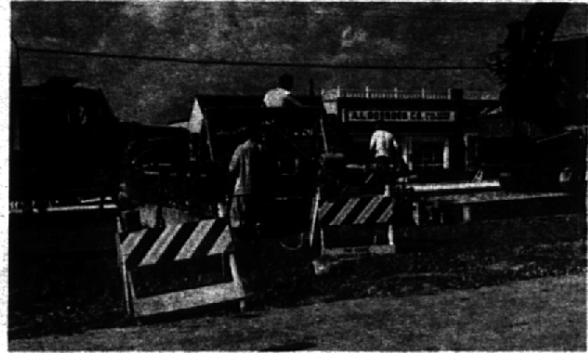
**BELL GREENHOUSES**

*For Flowers For All Occasions!*

928 S. Woodward (Near Lincoln)

MI 4-0811

**DO YOU REMEMBER THE MAPLE ROAD PAVING PROJECT?**



When we first came to the Birmingham area, the land at Maple Road and Telegraph Road was mostly vacant. The only two identifying buildings were the Standard Station on the Northeast corner and Chubb's Bar-B-Que on the Northwest corner. Time marches on and, as the corner developed, Maple Road was widened. The picture above appeared in the August 25, 1960 issue of The Birmingham Eccentric. Since then the corner where we are located has developed even more rapidly.

We are pleased to have had a part in the development of the Birmingham-Bloomfield area during the last fourteen years.

You can count on us for Customized Service.

**A. L. DOENGES CO.**

REALTORS

Residential

Industrial

Commercial

Property Management

MI 6-1600

JO 6-6372

4084 W. MAPLE ROAD AT TELEGRAPH ROAD

**A SUCCESS THAT STARTED AND GREW DURING THE DEPRESSION**



THIS is the success story of a farmer, past 60 years of age, and his two sons, also tillers of the soil, who possessed the old-time pioneer spirit of determination and an abundance of faith in Detroit's future progress and prosperity and started a business in 1934, when the worst depression this country has ever known was destroying industry and business.

Ira Wilson and his two sons, Charles L. and Asa E., were born and grew up on the old homestead on Middlebelt and West Chicago roads. This homestead has been in the possession of their forebears for over one hundred fifty years. The Wilson family have always been successful dairy farmers.

Prior to the depression, they hauled milk from milk receiving stations in the country to the dairies in Detroit. They owned and operated the largest fleet of glass-lined tank trucks in the U.S.A., but the business depression made necessary the cancellation of their hauling contracts, and the loss of years of hard labor and large investments in hauling equipment.

The father and two sons went into a huddle. They said: "We will build the most modern, sanitary dairy in Detroit. We will produce the best quality products in Detroit." They built a small, modest, but modern, sanitary dairy as an outlet for the milk of their dairy farms and the dairy farms of their farmer friends. And incidentally they have never missed a pay-check to their farmer friends for their milk, not even when the banks were closed in the early thirties.

Because of the customer-appreciation of their quality products, Wilson's business has steadily grown. Today, Wilson's dairy serves all Michigan. It is the largest independent dairy in Michigan and one of the largest in the United States.

Today, as in the depression days in which the business was born, Wilson continues to bring you the finest quality dairy products obtainable.

**IRA WILSON & SONS DAIRY CO.**