

The Birmingham Eccentric

COMMEMORATIVE
1864

Centennial

EDITION
1964

Birmingham's 100 Years of Incorporation

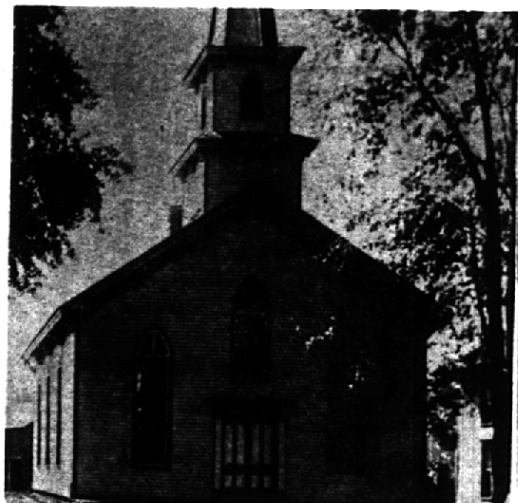
Section IV—Churches

May 14, 1964

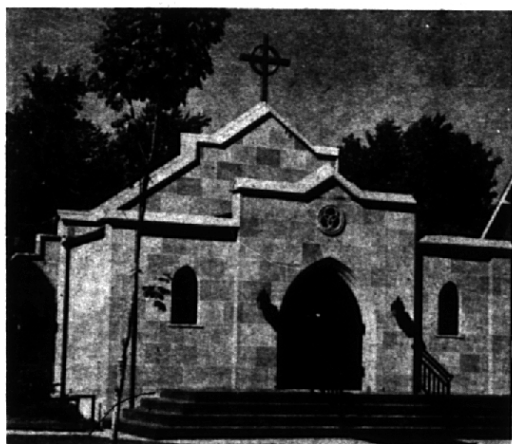
And They Came To Worship...



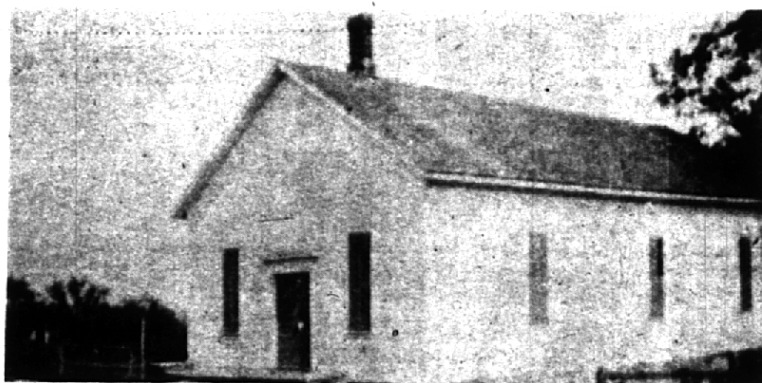
CHURCH OF SEVENTH DAY ADVENTISTS
Stood at the corner of Forest and Woodward in 1897.



PRESBYTERIANS' FIRST CHURCH BUILDING
It housed congregation from 1860 to 1916.



FIRST HOLY NAME CHURCH SERVED 33 YEARS
It was built in 1922, replaced in 1955.



BIRMINGHAM BAPTISTS BUILT FIRST HOME IN 1873
Family of rabbits lived under building at Willits, Bates.

IN THIS SECTION

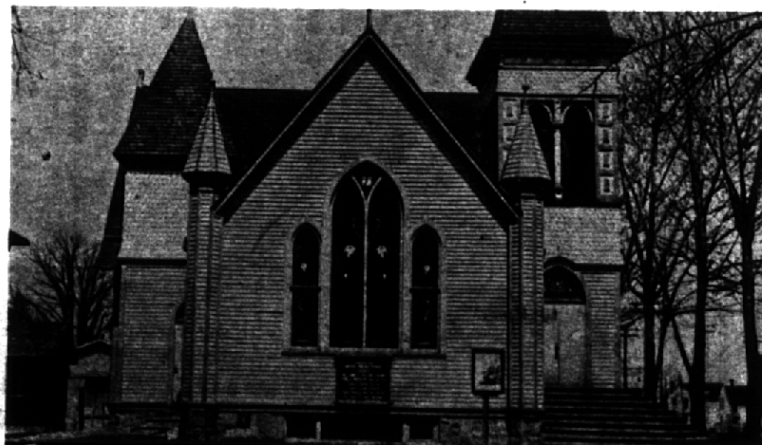
History of Birmingham's first three churches: Methodist, Presbyterian and Baptist. See story, pictures on page 3.

Episcopalians, Lutherans and Christ Scientists were among early churches established in Birmingham. See story, pictures on page 5.

The town's first Catholic priest arrived by trolley car. See story, pictures on page 7.

History of Bloomfield Hills churches. See stories, pictures on page 11.

In Beverly Hills the churches are older than the village. See story, pictures page 15.



UNITED PRESBYTERIAN CHURCH, DEDICATED IN 1897
Grace Baptist now occupies E. Lincoln site.