

# Ted's RESTAURANTS

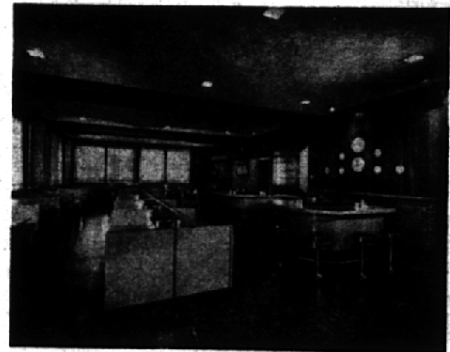
*Growing With Birmingham  
for 30 years*

In the summer of 1934, a house trailer on the corner became Michigan's First Drive-In. Ted's Trailer grew rapidly, along with the Michigan Automobile Industry. We started selling the World's Largest Hot Dog for 10c and 5c Soda Pop.



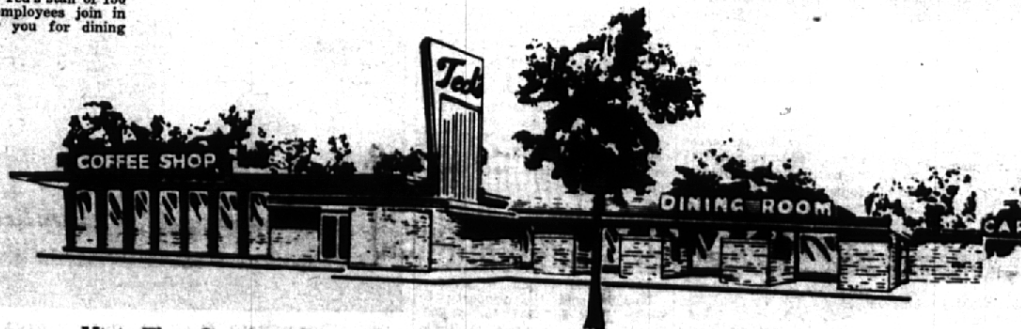
## RICH in TRADITION

Visit our beautiful Dining Room and Coffee Shop—dedicated to our original idea that has brought us many friends and guests throughout the years. We are also the World's Largest Electronic Car-Service Restaurant—100 stations, where pleasant, efficient waitresses make every effort to insure your complete satisfaction.



We Serve Daily  
Breakfast  
Luncheons  
Dinners  
Late Evening Snacks  
at  
Woodward and Square Lake Road  
Bloomfield Hills, Michigan

In 1951 Ted's was a tradition, and our present California style building was started. Additions were complete in 1955, providing two complete Dining Rooms, Coffee Shop and 100 electronically operated Car Stalls. Today, known to three generations of Michigan families, Ted's staff of 150 skilled employees join in thanking you for dining with us.



Visit The Garden Court Cafeteria and The Scot's Room In The Pontiac Mall