

Scott-Shuptrine

Looking Back thru the Years—Now
Looking at the Present and to the Future

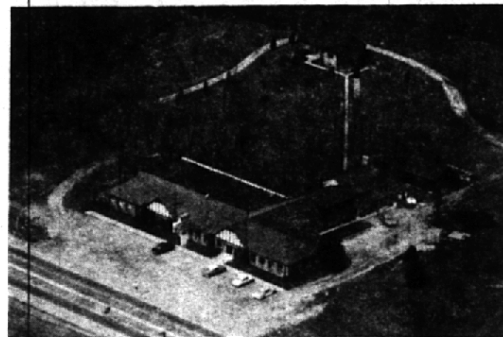


"Birmingham looks back on 100 years". To-day Birmingham takes another look at a proud community fervently blessed with beauty, prosperity and civic minded progressiveness. The Scott-Shuptrine Co. looks back on 12 successful years to the establishment of Birmingham's finest furniture store providing the ultimate in home furnishings and consultant guidance. We are pleased to be a part of this thriving city and the opportunity to serve its people.

BIRMINGHAM — 1185 South Adams, Midwest 4-8834
OPEN MONDAY AND THURSDAY EVENINGS UNTIL 9
CLOSED WEDNESDAYS

No Matter Which Way You Look At It . . .

We've Grown To Be Michigan's
Largest Dinnerware Specialty Store



We Are Very Happy To Have
Been Associated With
BIRMINGHAM
FOR THE PAST 27 YEARS

PONTIAC POTTERY

2099 S. TELEGRAPH ROAD
Just North of Bloomfield Miracle Mile
FE 2-8642

We Believe in Preserving Our Birmingham Traditions . . .



Our renovation plans for the former Masonic Temple will restore the grand old Peabody Mansion . . .
at Woodward and Forest
and serve as our "new" offices, about July 1st.
Because we believe that business is more than just a "dollars and cents" proposition, we are happy to preserve this unique Modern-Victorian building.
We welcome your suggestions as we plan this restoration of one of Birmingham's fine heritages.

245 South Woodward
MI 6-1234 JO 6-3121



BIRMINGHAM, MICHIGAN