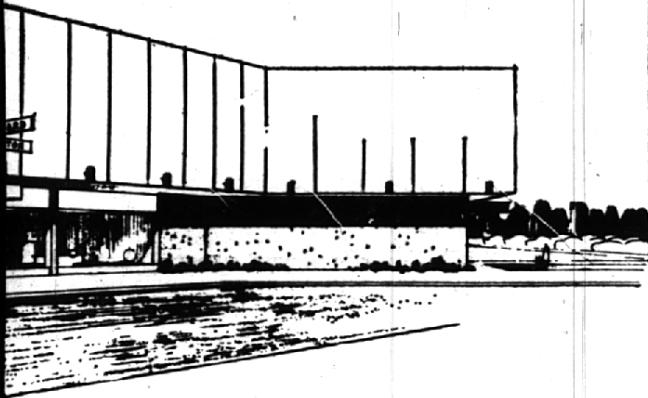


Birmingham ... on your
anniversary



Why do residents of Birmingham Like to Shop
in a Department store . . . Under one roof?

In the Birmingham area (we're practically a tot in
witnessed an ever-growing and most gratifying swing to

prevalence of "DEMERY'S - BIRMINGHAM" . . . just

one of the most famous brand-names obtainable,
on the other side of this page, we have listed a portion of these

obtainable, at the fairest prices possible is a
more than 53 years ago; these are the labels synonymous
grow and grow . . . ultimately expanding to our

Department Stores: it's that FRIENDLY SERVICE . . .
plans; Charge Account convenience; Parking facilities; the
Redemption Center on our premises, displaying the
of these little green stamps.

E . . . FOR FAMILY SHOPPING

more operation. We pledge ourselves always to
keep pace with the truly astounding growth of

this Centennial Celebration.



We give *53* Green Stamps

ACCESSORIES, LINGERIE, ETC.

- | | | |
|----------------------|--------------|----------------|
| Fowles | Phoenix | Kayser |
| Vanity Fair | Acis | Wear Right |
| Cameo | Hanes | Lady Buxton |
| Trifari | Richelieu | Glen-Tex |
| Monet | Burmil | Gage |
| Coro | Princess | Gardner |
| Warner's | Peter Pan | Gossard |
| Maiden Form | Goli | Playtex |
| Formfit | Youthcraft | Permalift |
| Evelyn Pearson | Bien Jolie | Yan Raalte |
| Artemis | Blue Swan | Exquisite Form |
| M. C. Schrank | Hollywood | Vassarlette |
| Lady Lynne | Daniel Green | Domphies |
| Town & Country Shoes | | Red Cross |
| Speidel | Hamilton | Butova |
| | Omega | Westclox |

FOR GIRLS—INFANTS

- | | | | |
|------------------|-----------|--------------------|-------|
| Cinderella | Saony | Lomay | Chix |
| Hi-Line | Youngland | Johnson & Johnson | |
| Donmoor | Lullabye | McKlem | Cosco |
| Wetah Strollers | | American Girl | |
| Mrs. May's Shoes | | Her Majesty | |
| Style Undies | Geisno | Mite Kiddie | |
| Health-Tex | | Buster Brown Shoes | |
| | U.S.Keds | Curly | |

FOR MEN—BOYS

- | | | |
|-------------|-------------------|---------------|
| Arrow | Jeyson | Society Brand |
| Botany | Jantzen | Worsted-Tex |
| J & F Suits | Carter's | Hickok |
| Cooper's | Exeello | Van Heusen |
| Knox | Stetson | Don Loper |
| Esquire | Duke of Hollywood | Swank |
| Interwoven | Mr. John | Puritan |
| Samsonite | Superba | Wembley |
| Ventura | Glencagles | London Fog |
| McGregor | Gino Paoli | Bostonians |
| Nunn-Bush | Evans | Strat-o-Jac |
| Dickies | David Copperfield | Akom |
| Kaynee | Levi Strauss | Wm. Barry |

COSMETICS—TOILETRIES

- | | |
|---------------------|-------------------|
| Charles of the Ritz | Tussy |
| Caron | Helena Rubinstein |
| Elizabeth Arden | Bonne Bell |
| Marchall | Mae Factor |
| Glen | Lorain |
| Dorothy Gray | Ervan |
| | Shulton |
| | Helene Curtis |



Shop, Second Level



Section of Second Level Girls' Shop



Gift Shop, Lower Level