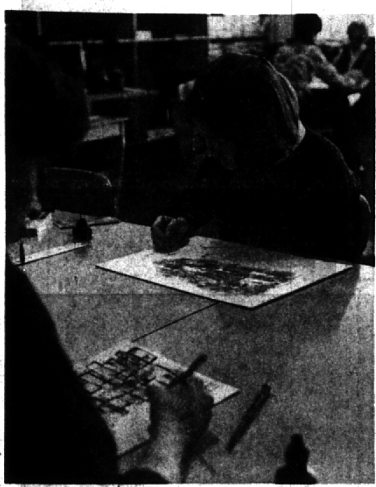


Exhibit 'A' (for Artwork)

Two Bloomfield Hills High School students prepare their exhibits for the fifth annual children's show cosponsored by the Oakland Art Education Association and the Northland Shopping Center in Southfield. Ed Perlman, sophomore, puts finishing touches on metal sculpture, above, and Mary Town, junior, completes an advertising project. Art work of all grades, kindergarten through 12th, is included in the exhibit, with the theme "Our Art is Young and Gay." Open during regular shopping center hours, the show is being held in the Northland Concourse through Saturday.



BAA Slates Meeting and Art Lecture

This annual meeting of the Bloomfield Art Association will take place at 8 p.m. Friday. Newly elected members of the board of trustees will be announced at this time.

Following the meeting, there will be a lecture illustrated with slides, on "Modern Art as a Tradition," by Dr. John C. Galloway, chairman of the department of art at Oakland University.

Dr. Galloway founded the department of art at Oakland when he was brought to the university, and he established the Oakland University art gallery in 1962. At present, his principal assignments at Oakland are directing the art department and gallery, and teaching courses in 20th century art and primitive art.

HE PREVIOUSLY taught in other fields including classical, medieval and renaissance history of art and in codepartmental classes involving poetry and the visual arts.

Dr. Galloway has been active as a painter, also, and has been represented in one-man or invitational exhibitions throughout the United States including New York, Washington, Baltimore, San Francisco and Houston.

He has participated in two international painting exhibitions and is represented in a number of private and public collections. Dr. Galloway studied at American University, and holds graduate degrees from that institution and Columbia University.

Cranbrook Slates Students' Sale of Handmade Pottery

Handmade ceramic pieces will be available in abundance during the annual Students' Pottery Sale at Cranbrook Academy of Art.

The sale opens Friday and continues through May 24. Student sales people will be in attendance daily from 9 a.m. to dusk. The sale will be held in Crafts Court, which is the first entrance on the right off Lone Pine Road, Bloomfield Hills.

Big pots, little pots, jugs, vases, bottles, mugs, cups and saucers will be among items offered. A percentage of the sale goes toward student sponsored scholarships.

Door

(Continued from 1-D)

The title speaks for itself and here we find, simply and clearly set down, the real philosophy of the genius who spent 25 years of his life at Cranbrook.

As Henry S. Booth has pointed out in his foreword, this book is "for the benefit of those who wish to understand him (Saarinen) as an architect and designer, appreciate the subtleties and variety of his creations, or simply to remember Cranbrook as a delightful place where his structures are not beautiful, empty shells, but filled with a creative spirit actively challenging, inspiring and educating for the enrichment of human life."

Twelve Concerts Set For OU Music Festival

On July 23, the campus of Oakland University, Rochester, will come alive to the sounds of the world's great music as a cultural dream takes a major step toward reality.

Conceived as the first phase in the development of a complete performing arts program in Southeastern Michigan, the 1964 Meadow Brook Music Festival will offer 12 summer concerts Thursdays, Fridays and Saturdays through August 15, using the full Detroit Symphony Orchestra under Sixten Ehrling's direction.

Season tickets are offered in a series of four, with choice of evenings and at three prices. Reservations are being taken by committee members throughout the area and at the University.

FROM EUROPE, Ehrling has announced soloists for the Thursday and Friday series. Saturday programs will be set at a later date.

The opening concerts July 23 and 24 will feature violinist Gordon Staples and cellist Italo Babin playing the Brahms Double Concerto in A minor.

Mary Costa, lyric soprano of the Metropolitan Opera Company, will be soloist July 30 and 31 and August 1. For her first two appearances she will be heard in the Richard Strauss "Four Last Songs" and Ravel's "Sheherazade."

On August 6 and 7, Ehrling will appear in the dual role of piano soloist and conductor in Hindemith's "The Four Temperaments."

PIANIST LEONARD Pennario will be soloist August 12 and 14 playing the Khatchaturian Concerto.

Under the leadership of Mr. and Mrs. Simon E. Knudsen, a huge citizens' committee is working to insure the Meadow Brook Music Festival an auspicious launching. New facilities being rushed to completion to present the concerts will rival any similar music festival in the United States.

The festival will be centered in

a natural amphitheater on the Oakland campus. A \$250,000 outdoor shell and audience pavilion will be the first structure completed. There are hopes that the program will eventually include performing arts center to include music, theatre and the dance.

THIS YEAR concert-goers will hear the concerts in a 2,000-seat pavilion which can be expanded in the future. It has been named the Howard C. Baldwin Memorial Pavilion in honor of the civic leader and Kresge Foundation trustee.

Seats will be arranged in tiers, each row six inches above the preceding row. The Lula B. Wilson Memorial Concert Shell, a Fiberglass structure especially designed for the pavilion, will incorporate a flexible ceiling that can be adjusted to balance orchestra sound. It will eliminate any need for sound reinforcement.

APARTMENTS OF DISTINCTION

Luxurious two and three bedroom apartment homes from \$50 a month. Reservations on request. (Hotspot Appliances)

FOX CROFT APARTMENTS

In Bloomfield
Maple and Telegraph, Phone JO 6-2226

SHUTTERS!

TOP QUALITY-LOW PRICES!

FOR INTERIOR WINDOWS

H	Width	6	7	8	9	10	11	12
E	20	1.10	1.35	1.50	1.68	1.88	1.98	2.19
I	24	1.50	1.75	1.93	2.09	2.25	2.38	2.48
E	28	1.60	1.94	2.09	2.24	2.40	2.49	2.84
G	32	1.92	2.10	2.44	2.77	2.92	2.98	3.29
H	36	2.26	2.56	2.85	3.16	3.40	3.55	3.76
T	40	3.50	3.60	3.71	3.78	4.04	4.19	4.32

FOR EXTERIOR WINDOWS
STOCK 1 1/2" BLINDS — PRICED PER PAIR

14x35 1/2 — \$5.95	14x51 1/2 — \$7.35	18x35 1/2 — \$6.30	18x51 1/2 — \$7.90
14x39 1/2 — \$6.30	14x55 1/2 — \$7.60	18x39 1/2 — \$6.65	18x55 1/2 — \$8.45
14x43 1/2 — \$6.55	14x59 1/2 — \$8.10	18x43 1/2 — \$7.05	18x59 1/2 — \$8.70
14x47 1/2 — \$6.85	14x63 1/2 — \$8.45	18x47 1/2 — \$7.55	18x63 1/2 — \$9.20
	14x67 1/2 — \$8.70		18x67 1/2 — \$9.65

WE WILL HELP YOU DO IT YOURSELF OR RECOMMEND A QUALIFIED CONTRACTOR

BIRMINGHAM LUMBER & SUPPLY CO.

1025 HAYNES STR. — MI 4-3636

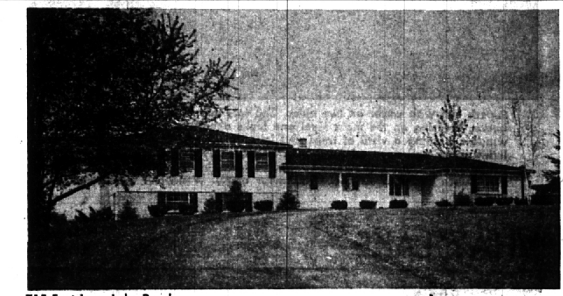
Between Adams & Hunter—5 Blocks South of Maple (East of Greenfield's)
Hours: Mon. Thru Fri. 7:30 to 5:30 P.M. — Sat. 7:30 to 4 P.M.

BEYOND THE CREST . . .

. . . you'll see the sparkling blue water of a spring fed lake available for your year 'round pleasure.

- The grey brick quad level offers
- 4 twin size bedrooms
- 3 1/2 baths
- huge family room
- spacious living and dining room
- complete walnut and white kitchen
- carpeting and drapes
- Bloomfield Hills Schools.

See it today!



715 East Long Lake Road

Lighting your way to better living

BENJAMIN & BISHOP, INC. REALTORS

259 S. Woodward, Birmingham, Michigan MI 4-3232 — JO 4-5728

Sculptors

(Continued from 1-D)

include areas of melted glass against the softer underlines.

Also starred in my notes — a welded bronze stork by Madelyn Wynkoop (I wish more people worked on this large scale); a pale green stone torso by Margaret Valpey which invites your touch; a small terra cotta piece by Francis Garda, called "The Men and the Wall," for its emotional content; Lorene Caris' "Nubular Fantasy #2," an intricate fairy tale assemblage of aluminum spatter; Connie King's two foot high abstract bronze, "Time," a deliberately resolved design; the restrained and sensitive glass panels by Betty Gros, and many, many more.

There are 138 pieces, the work of 22 women, in this quite remarkable show.

Closed on Week End

Because of the presentation of degree shows by graduates of Cranbrook Academy of Art, the academy's galleries in Bloomfield Hills will be closed to the public Saturday and Sunday this week.

North Americans had their first rice crop because of an accident. As the Book of Knowledge explains it, a sailing ship bound from Madagascar to England with a cargo of rice was blown off of her course in 1688 and put in at Charleston, South Carolina, for repairs. The captain of the ship gave a small bag of rice to a Charleston resident, who planted it on a piece of swampy land. The crop was so successful that other planters asked him for some of the grains to plant. A dozen years later, seventeen shiploads of rice left the port of Charleston, marking the beginning of the American export trade in rice.

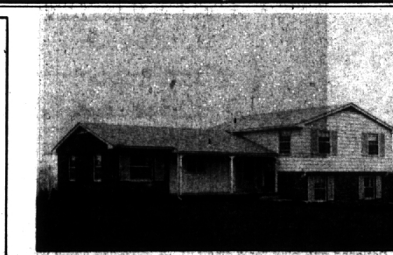
HALL & YOUNG

REALTORS

BIRMINGHAM 345 S. WOODWARD MI 6-7900

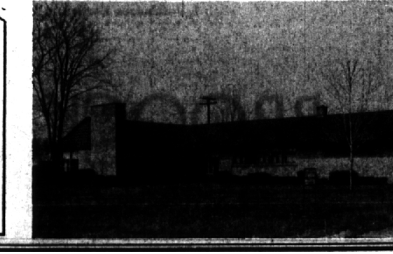
BLOOMFIELD 4114 W. MAPLE MA 6-5900

OPEN TILL 9 P.M.



HICKORY HEIGHTS—Surrounded by a scenic, rolling area of fine homes, you'll enjoy the spaciousness and immaculate condition of this colonial Tri-level. There are **FOUR BEDROOMS**, formal dining room, large family room with fireplace, 3 tastefully tiled baths, and attached 2 car garage. **YOUR ANSWER? \$41,500.**

CONVENIENCE PLUS—All the ease of one-floor living combines with privacy of floor plan in this well-shaped ranch to offer comfortable living. Three bright bedrooms, relaxing "yard-view" family room, 2 full baths, summer porch, and separate dining room. **CALL AND SEE! \$29,500.**



GRACIOUS LIVING—Located in Bloomfield Village, this roomy colonial awaits a growing family. There are four twin bedrooms, large paneled library, and 2 full baths plus 2 lavs. For leisure time, an enjoyable jacuzzed porch and basement recreation room. **CARPETED THROUGHOUT! \$44,500.**

TRADITIONAL WARMTH—Rambling across a half-acre site accented by a huge tree, here's a long and low Ranch with space for a large family. **FOUR** excellent bedrooms, studio-ceiling family room with second fireplace, 2 glistening tile baths plus lavatory, and att. 2 car garage. **FINE! \$39,900.**

