

Improve Your Home in '64

By MARY BAHN
Staff Writer

In spring, a resident's fancy turns to thoughts of—home clean-up, fix-up and paint-up!

Harsh winter weather can bring on many ailments around the house. Frost in the ground can damage foundations, extremes in temperatures can open up cracks around windows and doors and winds may have loosened shutters and television aerials and caused damage to wires.

The area that deserves the closest inspection is the roof. It takes more punishment from winter ice, snow, rain, wind and temperature changes than any other part of the house.

SOME HOMES need modernization or additions to provide room for growing families.

Pre-war homes often need more extensive remodeling—new plumbing, wiring, replacements of outmoded kitchens and baths, new siding, new rooms and a multitude of other improvements.

But the final results can be a delight.

Architecturally, amazing changes can frequently be made in simply removing seldom-used porches and taking off outdated trimming.

IT'S EASIER than ever before to modernize.

There are more dealers fully equipped to take care of the complete remodeling job. The old home improvement bugaboo—finding someone to do the job—is fast disappearing.

Before you begin your fix-up, be sure and clean-up.

Spring cleaning, particularly, is important especially when plan-

ning various remodeling and repair jobs around the house.

Home storage areas probably have collected many waste materials during the winter months. These are unsightly and are fire hazards which should be removed from the home and disposed of immediately.

TAKE CARE of as many of the little chores around the house as possible in the spare time now and fit the rest into the spring and summer work schedule.

Landscaping and planting the home property should be high on your improvement list. Fifty million gardeners this season will be planting trees and shrubs to make their home and properties more livable, beautiful and valuable.

Now that fixing-up and cleaning-up is out of the way, have fun with paint-up!

THE CURRENT TREND towards deeper, richer interior decorating colors is now heading out doors.

The new color direction is attributed in part to the growing popularity of patios and great expanses of glass which make it desirable to relate exterior colors to the interior.

A second contributing factor is the whole new range of deep and vibrant paint colors developed for both interior and exterior use.

One ingenious housewife, tired of the drab exterior of her home, installed rough-sawn cedar tongue-and-groove boards on the front of the house, sprayed them white to contrast with the brown of the rest of the siding. The face lifting job was an eye-stopper.

A NEW PAINT job can set the



IT'S PAINT-UP TIME AROUND BIRMINGHAM

Take full advantage of the spring weather to renovate your houses.

tone of the room, "pull together" the decorative scheme, even influencing your moods.

In choosing a color it is wise to give a lot of thought in order that you may achieve the results you want. Colors play a very tricky part as it can excite or relax, soothe or stimulate, warm or cool.

For example: a gloomy, north room will brighten and become cheerful under the touch of some

yellow paint. An overbright room will calm down if you add the right shade of green.

Cool, light colors produce a sensation of distance and enlarge a room; warm, deep colors seem to come forward to give a cozy feeling.

A WHITE OR lighter-than-the-walls ceiling appears higher; therefore you can "lower" a ceiling by

painting it a dark color.

Dark shades on the whole, are more masculine . . . light hues more feminine.

It's more effective to use complementary colors. You can paint three walls one hue, the fourth in the complementary shade.

To find a complementary color, get a color wheel; select your basic shade—its complement is the color directly opposite.

Proper Placing on Lot Blends Home with Nature

After finding the ideal location for your new home, "live with the land" for a while.

Assuming that you were satisfied on such important points as the desirability of the neighborhood, convenience of transportation, schools, churches and stores before buying the land, and your family is happy with the general plan of the house, the next most important basic point in the success of the venture can be the matter of orientation.

As Otto F. Wenzler, architectural consultant of Libbey-Owens-Ford Glass Co. puts it, "Too often families find property which is ideal in every respect with a good view, plenty of shade trees and ample space in relation to the size of house they intend to build, but

they nullify all these assets by facing the house the wrong way.

AND YET, the architect points out, with a little foresight and planning many of these pitfalls could be avoided.

Understandably, no one set of rules can always apply in the matter of location as conditions will change with practically every site, but wherever possible build the house where it will have the most privacy.

You can even get help from the type of layout you use. For example, the house itself will help to shield a back yard patio from the street and the living areas which open onto the patio through sliding glass doors will be out of sight of passers-by.

Also, don't remove any trees until you are sure they will be in the way.

"Don't overlook the fact that the house can also put nature to work as part of the heating and cooling system."

IN THE SUMMER, when the path of the sun is high in the sky, Wenzler said, a roof extension over the southern windows will act as a visor to shade the windows from the direct rays of the sun, thus helping to keep the house cool.

"The east and west sides of the house are difficult to protect from the summer sun in the morning and afternoon," Wenzler commented, "but shade trees can help by sheltering these elevations during the hot months.

"It is shortsighted to build homes in contradiction to their site and natural environment," Wenzler concluded.

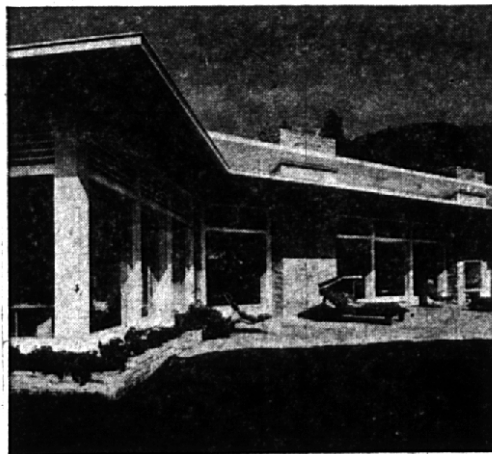
Miniature Stoves Impart Special Charcoal Flavor

Because of the abilities of cast iron, it's handy and popular nowadays to grill or heat hors d'oeuvres and special dinner courses on small stoves right at the table.

The cast gray iron firebed in such stoves helps give off a hotter heat to hasten the cooking or warming.

The firebed will not rust or burn out with continued use and a space between the firebed and stove bottom permits proper draft and cleaning.

Most such miniature stoves have an adjustable top grill. And what a delicious charcoal flavor they impart as a special food touch for a big entertainment night.

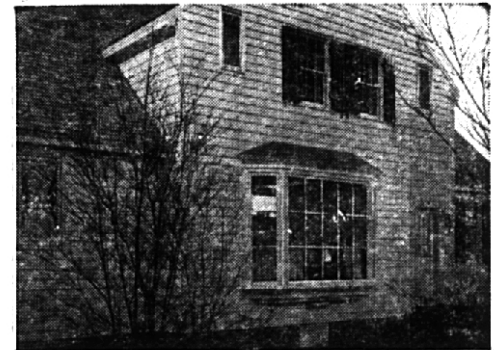


BUILT TO WORK WITH THE WEATHER
Designed to utilize the sun.

May 7, 1964

Home and Garden Section

Page 3



MULTI-PANED WINDOWS
Sure sign of Colonial style homes.

Wood Windows Mark Of Colonial House

One sure mark of the true Colonial house is the use of wood windows with many panes of glass.

In general, two types of wood windows were used during Colonial days: double-hung and bay windows. The double-hung window, which opens up from the bottom and down from the top, is still the most popular type today.

Bay and bow windows, originally used in homes and in stores as display windows, often are chosen for the space they add to a room as well as for their decorative effect, inside and out.

TODAY'S FAMILIES looking for the right windows for any house—Colonial, contemporary, or something in between—will find a wide variety of stock windows of ponderosa pine at their local building materials dealers.

In addition to double-hung windows and bay windows, which are assembled from stock units, homeowners can choose from several other types. These include:

Awning and hopper. These two windows are similar, but awning units open up and out, while the hopper units open down and in.

Casement Windows of this type open out to the side like a door. They are often used above the sink and other hard-to-reach places.

Sliding. An unobstructed view and ease of operation are characteristic of sliding wood windows.

All of these window types are available in pre-assembled units made of ponderosa pine, ready for low-cost installation and finishing. Hardware and built-in weather stripping are included.

Going to Remodel?

If you plan to remodel an old-fashioned heating system, consider having modern hydronic (hot water) heating installed. Hydronic heating provides maximum comfort by supplying the body's heat losses. It also delivers even heat that eliminates hot and cold spots.