

It Takes a Heap of Looking To Choose a Nesting Ground

Now in early spring, our birds move in from the south to become an integral part of our out-of-doors.

The small lake. All these individual requirements and adaptations, which may seem complicated to the reader, have

become instinctive bird behavior since they lead to the well-being and continued propagation of the species.

Navy Ensign Edwin W. Deer Jr., son of Dr. Edwin W. Deer Sr. of 467 Bonnie Brier, Birmingham, and Mrs. Deer, participated in the Seventh Fleet exercise "Crazy Horse" with Fighter Squadron 114 in the Far East.

The operation was designed to test the capabilities of the attack carrier striking force in conducting operations in support of a limited war situation while defending against air and submarine attack.

Lathrup Picks Residents for Advisory Posts

Lathrup Village approved their yearly appointments of residents to city advisory committees at their City Council meeting.

Committees and their members are:

South Oakland Planning Council: Mayor Richard N. Cogger, John L. Pederson.

Zoning Board of Appeals (three-

year term): Vernon Paul, John L. Pederson, Lawrence Hill.

Road and Traffic Safety Advisory Committee: Thomas Reed, Ray Heyn, Tom Tellersen, M. Arthur Deirise, and George Daebler, chairman.

FOREST ADVISORY: Albert Little, chairman; Robert Slavsky, Little, chairman; Robert Slavsky, Little, chairman.

Joseph Swain, Dan. Hines.

Building Code and Inspection: Harvey Caddell, chairman; Adam Malone, Jerald D. Stone, William DanBoise.

Budget Audit and Business Procedures: John Olzowski, chairman; John J. Fox, Harry Morris, Sam E. MacArthur.

Southwestern Oakland County Water and Incinerator Authority: Jerald D. Stone, Gordon Kinsbury, alternate.

CITY DEVELOPMENT: Thomas M. Myers, chairman; Douglas Lambourne, Gordon Kinsbury, Mrs. Alex Bileston, Roy Neaveau.

Electrical Board: Jerald D. Stone, Harvey Caddell, Ed Miller, Fred Johnson.

Municipal Buildings: David P. Anderson, chairman; Mrs. Norman H. Iverson, Donald Forrest, Elmer S. Craig, Fred Thompson.

Minnesota license plates bear the legend "Land of 10,000 Lakes," but there are actually more than 11,000 lakes in the state.

Certain types of behavior are a prelude to this important activity. Instead of traveling in gregarious flocks to feed and to roost in favorite surroundings, the males are now inclined to strike out on their own to investigate and select a territory suitable for a nest site.

A male bird may begin by selecting a plot as large as three or four acres within which he frequently establishes a number of favorite singing situations. However, before he has made a final decision, the encroachment of other contending males of his species may have driven him to a territory half the original size.

Mrs. Frehse

A SELECTED SITE must serve not only as a mating and nesting ground, it must also provide a potentially adequate food supply for both parents and fledglings. Thus, an insect-eating warbler, a worm-eating robin and a seed-eating goldfinch will show considerable variation in selecting an acceptable territory.

A house wren may confine its activities to a small garden or to an open area as large as a half acre. Insect-eating bluebirds may prefer a range as large as 10 acres, a meadow-lark will forage over twice that amount, while a golden eagle may dominate a territory of more than 85 square miles.

Woodland warblers often space their nests at several per acre. However, in a spruce budworm outbreak in a coniferous forest in Ontario, 88 pairs of bay-breasted warblers confined themselves to a minimum of only one-tenth of an acre and a maximum of slightly more than three-tenths of an acre.

ON THE OTHER hand, a pair of predatory hawks may range over several square miles, although they are not able to defend so large an area. A mourning dove may also stake out a sizeable territory—but in the end defend only a small, immediate site.

Species of owls which feed largely upon rodents make their nests in barns or adjacent to fields where such a food supply abounds.

A few birds which nest in defended territory may have separate feeding grounds outside this range. A once common sight was several dozen robins feeding on a lawn or golf course. Black-capped chickadees, cedar waxwings and swallows follow the above pattern.

Sea birds usually have distinct nesting and feeding areas. Cliff-dwelling species frequently nest in a cramped space, the extent of which is determined by the length of the owner's bill. Such a colony of murres on the Oregon coast is estimated at 22,000 pairs per acre.

IN THIS TYPE situation, the whole colony gathers its food at sea which is free for all. However, the nesting area prevents an unbelievable chaos of hatched and unhatched eggs, birds young and old and fish food in many stages of decay.

In the case of ducks, the drake selects and defends a "loafing bar" where he and his mate can find safety from molestation. The hen which may nest as far as a mile away at a secret site, frequently returns during the egg-laying and early stages of incubation to visit her mate at the above meeting place.

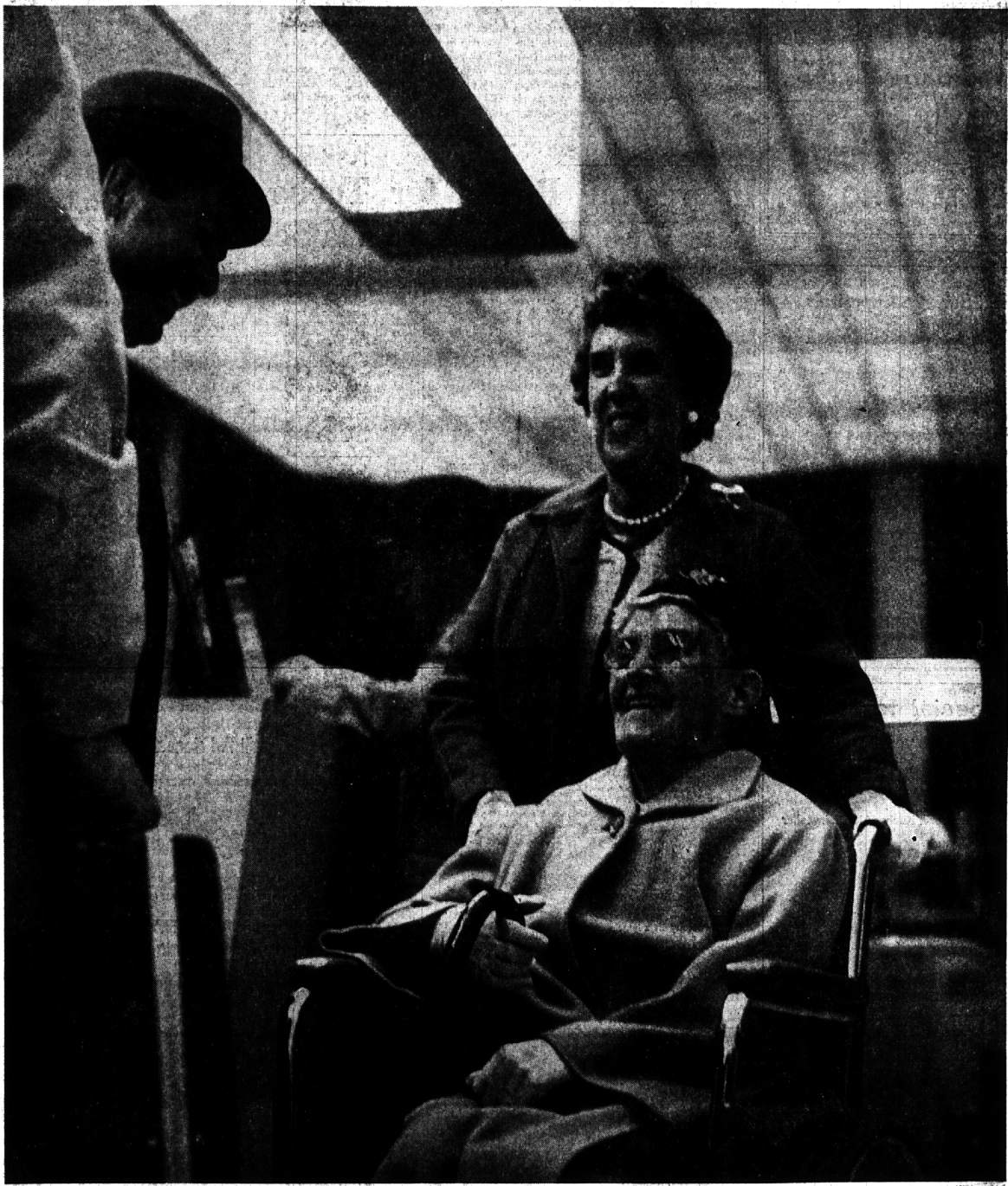
Grouse and prairie chickens use display grounds to court and mate promiscuously with whatever harem appear. The latter select their own nest sites which are not defended or even known to the males. These territories also serve as social gathering sites for the cocks in winter.

IN GENERAL, bird territories are oval in shape, and if the habitat permits, they conform to the lay of the land. However, a kingfisher or a western dipper may control the fishing sites to a linear mile or so of stream, while a pair of loons often appropriate an en-

Y Schedules Summer Fun Club

The Birmingham YMCA is offering a Summer Fun Club program to six and seven-year-old boys and girls in which they are taught basketball, swimming, and outdoor games.

The children will be divided into two groups. Group A will meet on Monday, Wednesday, and Friday for a total of six days, and Group B will meet on Tuesday and Thursday for a total of six days. Children must be Y members. Residents may contact the Birmingham Y for enrollment information.



When you're over 80, like Miss Frances Redman, it's nice to have a friend meet you at the airport—even nicer to have another one come all the way to Florida just to fly back with you. This spring, Olo Austin, of our Main Office, made the flight; and Ted Theodoroff, Vice President and Trust Officer met them. The service certainly isn't one that was spelled out when our Trust Department took over Miss Redman's financial affairs in 1943... but it's typical of the kind of extra service we like to provide our clients. And, maybe, it helps explain why our Trust Department is among the leaders in the United States.



DETROIT BANK & TRUST