

Calendar of Cultural Events

Thurs. April 16

BRIDGE - Birmingham Duplicate Bridge Club meets at 7:45 p.m. at the Birmingham YMCA, 400 E. Lincoln. Open to the public.

RAVEN GALLERY—Tom Paale with ballads and blues. At 9:30 p.m. at 136 Brownell, Birmingham. Admission charge.

OU ART GALLERY—Exhibit of more than 100 original art works by Oakland University students. Through Saturday. Gallery hours are 12 noon to 4 p.m. Monday-Friday. No admission charge. At Oakland University, Rochester.

BLOOMFIELD ART ASSOCIATION—“Exhibition of Student Work” through April 26. Hours are 2-5 p.m. Tuesdays through Sundays. At Birmingham Art Center, 1516 S. Cranbrook.

CRANBROOK ACADEMY OF ART GALLERIES—Faculty Show. Through May 3. Galleries, on Lone Pine Road, Bloomfield Hills, open every day except Mondays, 2-5 p.m. Admission charge.

AMERICA HOUSE—“California Pottery Show,” work by 20 craftsmen. Through Saturday, at 555 E. Maple, Birmingham. Hours are 10 a.m.-5:30 p.m. Mon.-Sat., except Thurs.-Fri. until 9 p.m.

LITTLE GALLERY—Exhibition “Contemporary American Printmakers.” At 915 E. Maple, Birmingham. Hours 9 a.m.-5 p.m. Tues.-Sat. thru May 9.

BIRMINGHAM THEATRE—Academy Award-winner Sidney Poitier in “Lilies of the Field.” Also, Don Murray in “One Man’s Way.”

BLOOMFIELD THEATRE—Academy Award-winner Patricia Neal, with Paul Newman, in “Hud.” Also, Lettie Caron in “The L-Shaped Room.”

Fri. April 17

FILM TRAVEL SERIES—Thayer Soule closes series with “Footloose in France.” At 8 p.m. at the Community House, Bates and Townsend, Birmingham. Tickets in advance or at the door.

BLOOMFIELD ART ASSOCIATION—“Art Event,” live interplay between poet, painter, dancer and musician as they create simultaneously. At 8:30 p.m. at the Birmingham Art Center, 1516 S. Cranbrook Road. Admission charge for non-members.

CRANBROOK ACADEMY OF ART GALLERIES—Three-day student scholarship sale. At galleries, Lone Pine Road, Bloomfield Hills. Auction today 8-10 p.m.

RAVEN GALLERY—Tom Paale with ballads and blues. At 9:30 p.m. at 136 Brownell, Birmingham. Admission charge.

ST. DUNSTAN'S GUILD—Tennessee Williams' drama “Summer and Smoke.” At 9 p.m. at the St. Dunstan's Guild Playhouse, Lone Pine Road, Bloomfield Hills. Tickets in advance at St. Dunstan's Guild-Tickets, 215 Poppleton, Birmingham, or Maurice Smith, 4025 Blackthorn Court, Birmingham.

MAYFAIR DUPLICATE BRIDGE CLUB—Every Friday at 8 p.m. at 29800 Middlebelt, two doors from Northwestern Hwy. Open to the public. Marian Collins, director.

Sat. April 18

AMERICAN ASSOCIATION FOR THE UNITED NATIONS, Oakland County Chapters. All-day program at Kellogg Center, East Lansing. Open to the public.

FILM TRAVEL SERIES—Thayer Soule closes series with “Footloose in France.” At 8 p.m. at the Community House, Bates and Townsend, Birmingham. Tickets in advance or at the door.

CRANBROOK ACADEMY OF ART GALLERIES—Three-day student scholarship sale. At galleries, Lone Pine Road, Bloomfield Hills. Open from 2-5 p.m.

SILLY CIRCUS—Avon Players of Rochester present musical stage show keyed to circus tempo for the youngsters. At 1:30 p.m. at the Community House, 380 S. Bates, Birmingham. Tickets in advance or at the door.

RAVEN GALLERY—Tom Paale with ballads and blues. At 9:30 p.m. at 136 Brownell, Birmingham. Admission charge.

ST. DUNSTAN'S GUILD—Tennessee Williams' drama “Summer and Smoke.” At 9 p.m. at the St. Dunstan's Guild Playhouse, Lone Pine Road, Bloomfield Hills. Admission charge. Tickets in advance at St. Dunstan's Guild-Tickets, 215 Poppleton, Birmingham, or Maurice Smith, 4025 Blackthorn Court, Birmingham.

RAVEN GALLERY—Tom Paale with ballads and blues. At 9:30 p.m. at 136 Brownell, Birmingham. Admission charge.

ST. DUNSTAN'S GUILD—Tennessee Williams' drama “Summer and Smoke.” At 9 p.m. at the St. Dunstan's Guild Playhouse, Lone Pine Road, Bloomfield Hills. Admission charge. Tickets in advance at St. Dunstan's Guild-Tickets, 215 Poppleton, Birmingham, or Maurice Smith, 4025 Blackthorn Court, Birmingham.

Sun. April 19

CRANBROOK ACADEMY OF ART GALLERIES—Three-day student scholarship sale. At galleries, Lone Pine Road, Bloomfield Hills. Open from 2-5 p.m.

RAVEN GALLERY—Hootenanny with Tom Paale, ballads and blues singer. At 9:30 p.m. at 136 Brownell, Birmingham. Admission charge.

Mon. April 20

ANTIQUE SERIES—Paul Perrot, director of the Corning Museum, Corning, N. Y., close series, speaking on “European and American Glass.” At 1:30 p.m. at the Village Woman's Club, 190 E. Long Lake Road, Bloomfield Hills. Open to the public. Admission by series or individual ticket.

BRIDGE—Community House Duplicate Bridge Club meets at 7:45 p.m. at 360 S. Bates, Birmingham. Open to the public.

Tues. April 21

AMERICAN ASSOCIATION FOR THE UNITED NATIONS, Oakland County Chapter—Norman Cousins, editor, Saturday Review of Literature, speaks at joint meeting with Rochester Chapter. At 8 p.m. at Oakland University, Rochester.

BRIDGE—Birmingham Duplicate Bridge Club meets at 12:30 p.m. in the home of Mrs. Stuart Murphy, 2424 Manchester, Birmingham. Open to the public.

RAVEN GALLERY—Tom Paale sings ballads and blues. At 9:30 p.m. at The Raven, 136 Brownell, Birmingham. Admission charge.

Wed. April 22

RAVEN GALLERY—Tom Paale sings ballads and blues. At 9:30 p.m. at The Raven, 136 Brownell, Birmingham. Admission charge.

Thurs. April 23

RAVEN GALLERY—Tom Paale sings ballads and blues. At 9:30 p.m. at The Raven, 136 Brownell, Birmingham. Admission charge.

LATHRUP PLAYERS—“Blithe Spirit,” Noel Coward comedy. At 8:15 p.m. at Lathrup Community Congregational Church on Southfield Road, Lathrup Village. Tickets from any member or at the door.

DOWN TO EARTH

Time to Turn Over New Leaf on Subject

By ALICE WESSELS BURLINGAME
Special Writer

Time and experience are good teachers, and I have to admit I have been a student.

Through the years your columnist has advocated saving every leaf you rake up around your shrubs and trees in the spring to make a compost pile. It really sounds good because you and I are always looking for a shovelful of rich black loam but enough is enough.

On a city lot you can only collect so many leaves and you should develop a cache behind “something” so that you can reach for that needed compost but to collect too many spells visual disorder.

This admission is commonly known as eating crow.

ANOTHER ITEM to bring to your attention when gardening, if you are handling tomato plants and have been smoking, be sure to wash your hands with soap first as there is a tie-up between Tomato Mosaic (stunted, mottled foliage) and tobacco plant mosaic.

You do no harm to ten caterpillars when you destroy their unsightly tents after they have left. As leaves appear in the spring, the caterpillars which have already hatched from a hard egg around the twig, begin to eat as fast as they can. Six weeks from the time they are hatched, they are fully grown. Before the end of May they leave their tents to find a dry protected place to spin dirty cocoons.

You often see these cocoons in crevices of bark, under window sills, etc. Setting fire to branches to destroy the tents does a great deal of damage to the trees.

AS WE ARE interested in enclosed porch and patio adornment you will enjoy creating dish gardens for this purpose. They make handsome gifts to share with friends, too.

Select a container with a low lip. The large-size flower pot saucers are ideal. Gather up material which will make a good composition, such as a couple small rocks you feel are special, a small piece of mottled bark, some moss, perhaps a small cutting of your favorite evergreen, maybe some dwarf marigold seed.

You can use a small piece of

Presents Vocalists

Frederick A. Prothron, singing teacher and longtime resident of Birmingham, recently presented several pupils in a program in his home at 667 Hanna. Among those participating was Mrs. A. E. Killen, who is soloist at The Christian Science Church of Franklin.

B'field Architect Will Be Speaker at Religious Festival

Architect Glen Paulsen of Bloomfield Hills will lecture on “Architecture as It Speaks in the City to All Who Have Eyes” at 7 p.m. April 24 in the Riverside Lutheran Church buildings, Detroit.

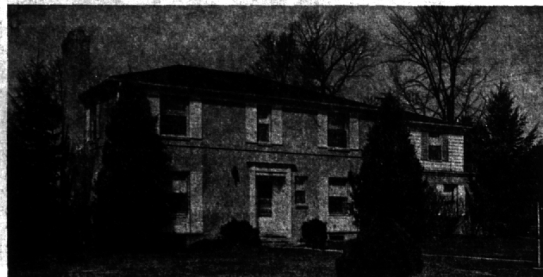
His talk will be a part of the festival entitled “Religious Art in the City” Sunday through April 24, 1964.

20. Purpose of the festival is to reintroduce the fine arts to residents of the inner city. Paulsen's most recent architectural project is the Detroit Shapir Hall of Pharmacy at Wayne State University. He lives at 6299 Eastmoor Road and has offices at 1565 N. Woodward.

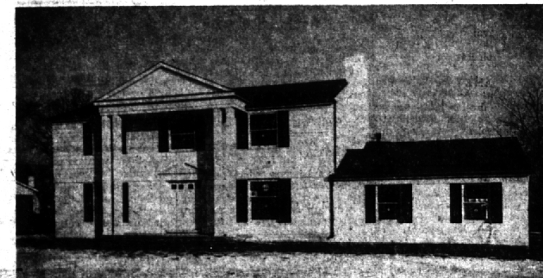
The highest good of the mind is the knowledge of God, and the highest virtue of the mind is to know God. Spinoza from Ethics.

April 16, 1964 THE BIRMINGHAM (MICH.) ECCENTRIC 5-D

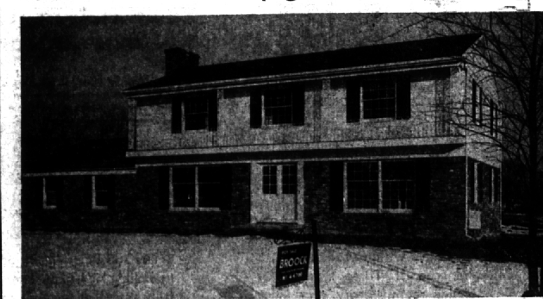
IN BLOOMFIELD VILLAGE



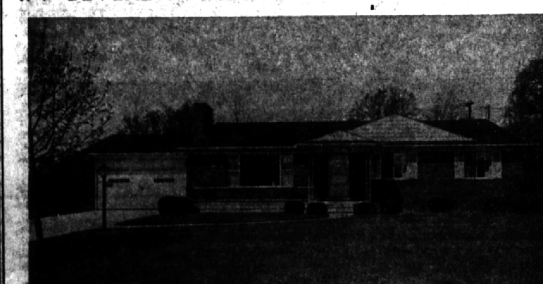
NEAR THE VILLAGE—2 NEW COLONIALS



OPEN SATURDAY-SUNDAY
1-5



IN BEVERLY HILLS



- In Bloomfield Village on spacious site, landscaped for maximum privacy.
- Four unusually large bedrooms, three baths.
- Powder room on 1st floor—lav in basement.
- Well planned kitchen with huge breakfast area.
- Paneled family room with concealed bar.
- Attractively finished “rec” room with fireplace.
- A home that would be particularly appealing to an active, growing family.

\$43,900.

- Yours to decorate and personalize.
- Four excellently proportioned bedrooms with exceptionally large closets.
- Two tile baths, also a powder room off foyer.
- 23x13.9 paneled family room with fireplace.
- 102x165' site convenient to schools and shops.
- Efficient and equipped kitchen with large breakfast area.
- Removable pullion window inserts.
- Base landscaping and seeded lawn.

\$38,900.

- Lowest price in new housing in the Village area.
- Excellent traffic pattern, huge closets.
- Four “twin” bedrooms with two full baths.
- Inviting paneled family room with fireplace.
- Separate dining room with window wall.
- A kitchen which will delight the “cook”, also a large breakfast area.
- Base landscaping and seeded lawn.
- A “must see” when priced at

\$35,900.

New Season Is Sellout

The Community Concerts Association of Southern Oakland County has just concluded its annual membership campaign, which was a sellout for the 1964-65 season.

The board members met Saturday at the home of Mr. and Mrs. James Williams of Royal Oak to select the following artists for next season:

The Westminster Choir, 40 voices, from Princeton, N. J.; Richard Cross, bass-baritone; Gold and Fildale, duo-pianists; Ballet '64, a company of 12 young dancers of the San Francisco Ballet; and New

Talent

(Continued from 1-D)

Will-O-Way for two and a half years while a psychiatric social worker at the Northville State Hospital. She received her senior certificate from the Apprentice Theatre.

Her enthusiasm for the Will-O-Way program was so great that in 1958 she established the scholarship that is awarded in her name.

The last passenger pigeon in the world died in Cincinnati Zoo in 1914.

York Concert Trio, harpist-cellist.

Birmingham Insurance Agency

114 S. Woodward

Representing:

AMERICAN INSURANCE CO.
EMPLOYERS GROUP
HOME INS. OF NEW YORK
NATIONAL UNION
OHIO CASUALTY CO.
TRAVELERS
ST. PAUL FIRE AND MARINE



OSCAR F. PETERSON
BRUCE F. RANDALL
FRANK W. WHITSON

MI 4-2422
“After We Sell We Serve”

A PROVOCATIVE PLAN

In a Versatile Setting...
Home of a Detroit Edison Engineer...

- Complete electrical appointments... (Garage door electric eye, electric lighted driveway, all electric kitchen, inter-com system).
- All woodwork genuine hand rubbed mahogany...
- Walk in cedar closets...
- Impressive Marble wall in entrance foyer...
- Incidentally, 4 bedrooms...



FRED PIERCE INC.

460 NORTH WOODWARD, BIRMINGHAM, MICH.
Midwest 7-4414

MAX BROOCK INC.

“Nationally Known Realtors”
300 S. Woodward

MI 4-6700
JO 4-6700

Open daily 9-4
Saturday 9-3